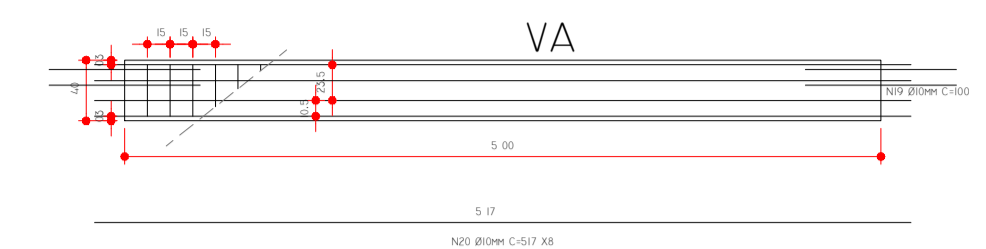
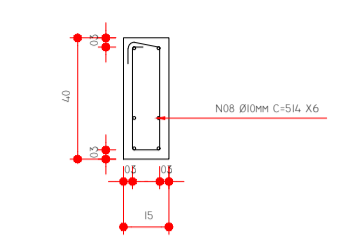


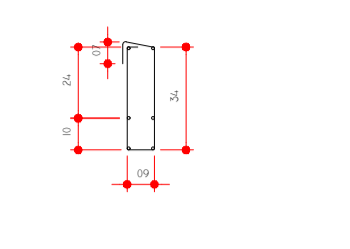
2



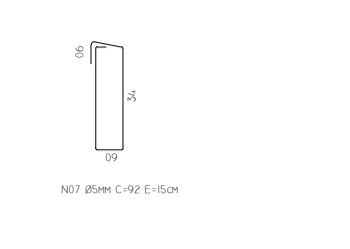
SECÇÃO LONGITUDINAL  
ESC.: 1:50



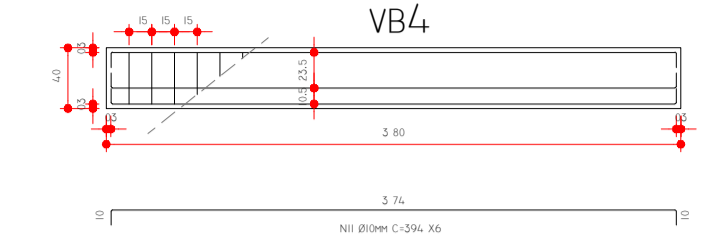
SECÇÃO TRANSVERSAL  
FORMA  
ESC.: 1:25



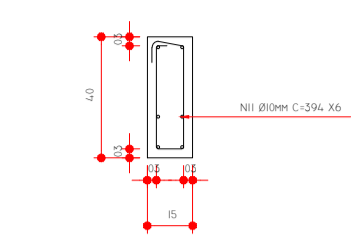
SECÇÃO TRANSVERSAL  
ARMADURA  
ESC.: 1:25



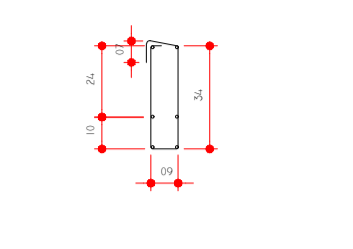
SECÇÃO TRANSVERSAL  
ESTRIVO  
ESC.: 1:25



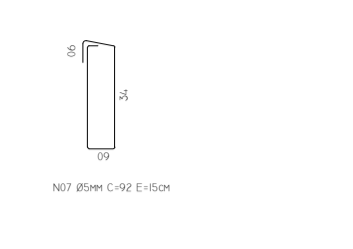
SECÇÃO LONGITUDINAL  
ESC.: 1:50



SECÇÃO TRANSVERSAL  
FORMA  
ESC.: 1:25

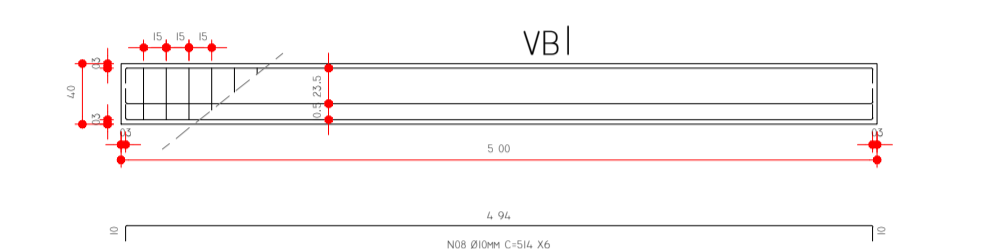


SECÇÃO TRANSVERSAL  
ARMADURA  
ESC.: 1:25

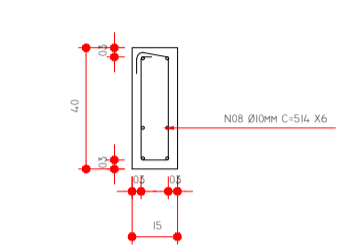


SECÇÃO TRANSVERSAL  
ESTRIVO  
ESC.: 1:25

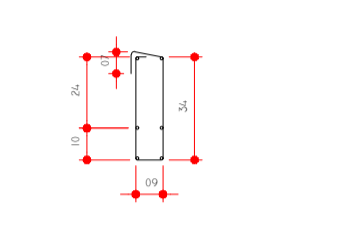
1



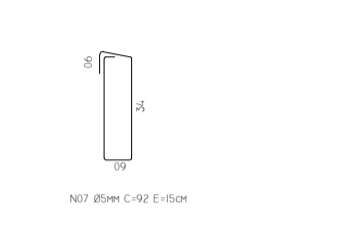
SECÇÃO LONGITUDINAL  
ESC.: 1:50



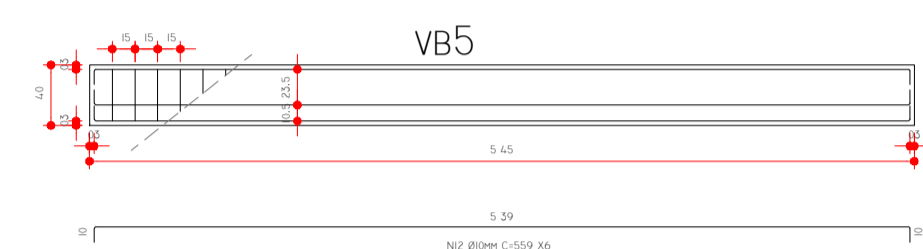
SECÇÃO TRANSVERSAL  
FORMA  
ESC.: 1:25



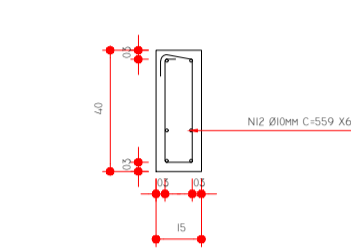
SECÇÃO TRANSVERSAL  
ARMADURA  
ESC.: 1:25



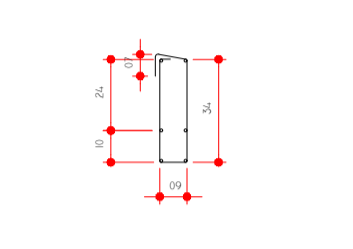
SECÇÃO TRANSVERSAL  
ESTRIVO  
ESC.: 1:25



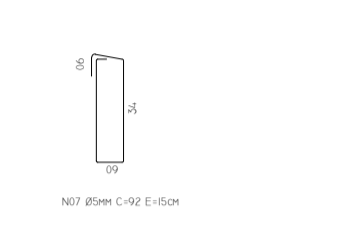
SECÇÃO LONGITUDINAL  
ESC.: 1:50



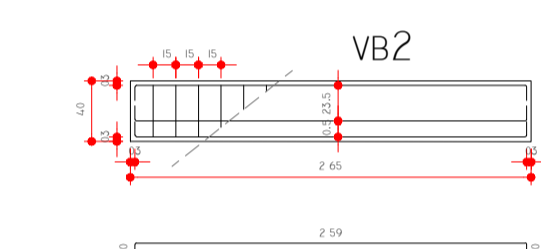
SECÇÃO TRANSVERSAL  
FORMA  
ESC.: 1:25



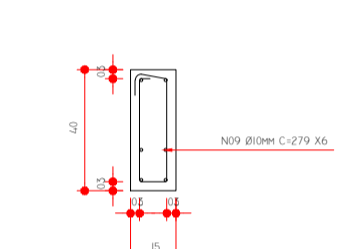
SECÇÃO TRANSVERSAL  
ARMADURA  
ESC.: 1:25



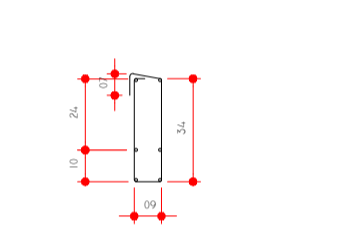
SECÇÃO TRANSVERSAL  
ESTRIVO  
ESC.: 1:25



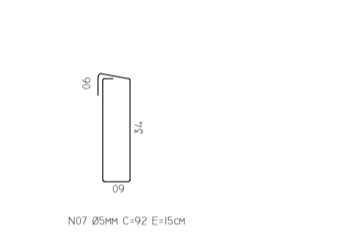
SECÇÃO LONGITUDINAL  
ESC.: 1:50



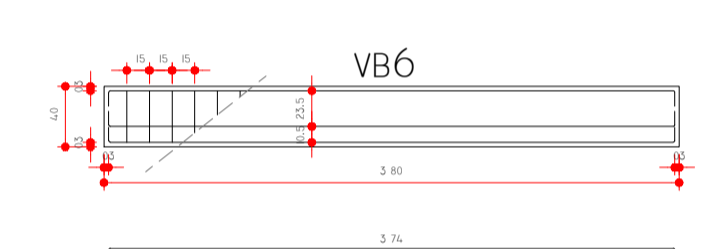
SECÇÃO TRANSVERSAL  
FORMA  
ESC.: 1:25



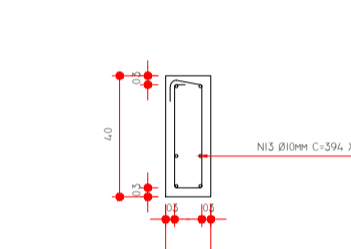
SECÇÃO TRANSVERSAL  
ARMADURA  
ESC.: 1:25



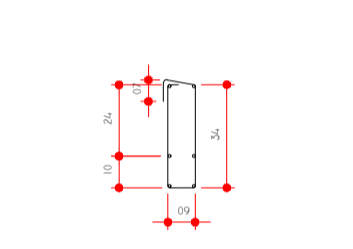
SECÇÃO TRANSVERSAL  
ESTRIVO  
ESC.: 1:25



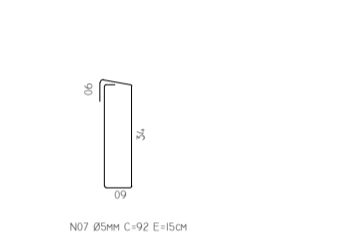
SECÇÃO LONGITUDINAL  
ESC.: 1:50



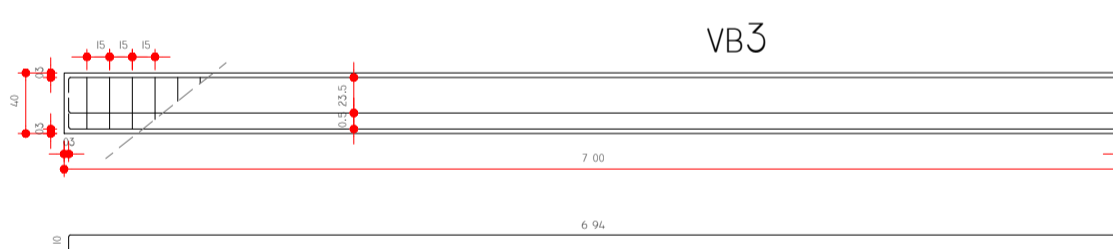
SECÇÃO TRANSVERSAL  
FORMA  
ESC.: 1:25



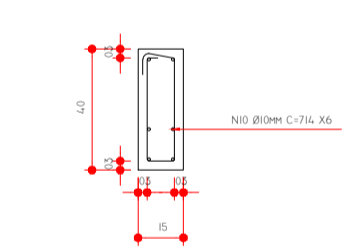
SECÇÃO TRANSVERSAL  
ARMADURA  
ESC.: 1:25



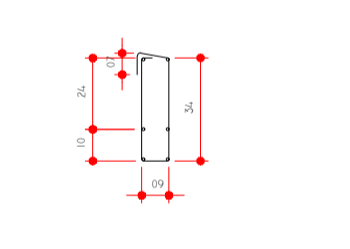
SECÇÃO TRANSVERSAL  
ESTRIVO  
ESC.: 1:25



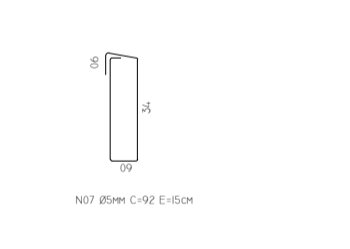
SECÇÃO LONGITUDINAL  
ESC.: 1:50



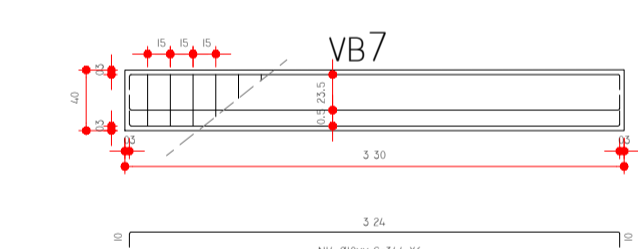
SECÇÃO TRANSVERSAL  
FORMA  
ESC.: 1:25



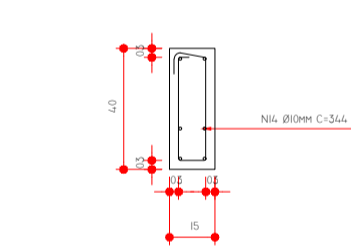
SECÇÃO TRANSVERSAL  
ARMADURA  
ESC.: 1:25



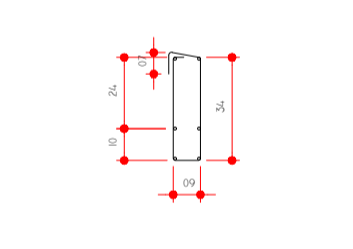
SECÇÃO TRANSVERSAL  
ESTRIVO  
ESC.: 1:25



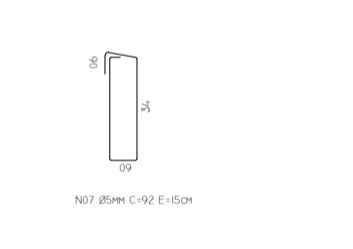
SECÇÃO LONGITUDINAL  
ESC.: 1:50



SECÇÃO TRANSVERSAL  
FORMA  
ESC.: 1:25



SECÇÃO TRANSVERSAL  
ARMADURA  
ESC.: 1:25



SECÇÃO TRANSVERSAL  
ESTRIVO  
ESC.: 1:25



SECÇÃO TRANSVERSAL  
CANALETA DE CONCRETO  
ESC.: 1:50



SECÇÃO TRANSVERSAL  
ARMADURA  
ESC.: 1:50

LEGENDA AÇO - FORMAS/CONCRETO						
TIPO	C=(m)	L=(m)	H=(m)	QTD	FORMA(m²)	CONC.(m³)
S1	0,80	0,80	0,60	18	34,56	6,91
S2	0,40	0,40	0,60	25	24,00	2,40
DESENV. SECÇÃO H=(m) QTD FORMA(m²) CONC.(m³)						
P1 Ø,3	0,94	0,08	4,80	18	81,22	6,91
P2 Ø,3	0,94	0,08	2,00	2	3,76	0,32
C=(m) L=(m) H=(m) QTD FORMA(m²) CONC.(m³)						
P3 30X15	4,70	0,15	0,40	18	67,68	5,08
DESENV. SECÇÃO H=(m) QTD FORMA(m²) CONC.(m³)						
AR1 Ø,3	0,94	0,08	1,02	20	19,18	1,63
C=(m) L=(m) H=(m) QTD FORMA(m²) CONC.(m³)						
AR2,3X,15	0,30	0,15	1,02	23	21,11	1,06
VB1	5,00	0,15	0,40	47	193,64	14,10
VB2	2,65	0,15	0,40	2	4,48	0,32
VB3	7,00	0,15	0,40	2	11,44	0,84
VB4	3,80	0,15	0,40	2	6,32	0,46
VB5	5,45	0,15	0,40	2	8,96	0,65
VB6	3,80	0,15	0,40	1	3,16	0,23
VB7	3,30	0,15	0,40	1	2,76	0,20
VA	5,00	0,15	0,40	18	74,16	5,40
					CONCRETO	46,510
					FORMA PLANA	452,270
					FORMA Ø 30	104,160

LEGENDA AÇO - VERGALHÃO						
TIPO	FCy	Ø (mm)	C. UNIT. (cm)	C. total (cm)	Kg / m²	Kg total
N01	CA-60	5,00	306	220	0,154	33,93
N02	CA-60	5,00	146	105	0,154	16,19
N03	CA-60	5,00	70	2.803	0,154	431,63
N04	CA-50	10,00	182	328	0,617	202,13
N05	CA-50	10,00	102	98	0,617	60,42
N06	CA-50	10,00	203	625	0,617	385,77
N07	CA-60	5,00	92	2.269	0,154	349,38
N08	CA-50	10,00	514	1.449	0,617	894,33
N09	CA-50	10,00	279	33	0,617	20,66
N10	CA-50	10,00	714	86	0,617	52,86
N11	CA-50	10,00	394	47	0,617	29,17
N12	CA-50	10,00	559	67	0,617	41,39
N13	CA-50	10,00	394	24	0,617	14,59
N14	CA-50	10,00	344	21	0,617	12,73
N15	CA-50	10,00	15	375	0,617	231,38
N16	CA-50	10,00	477	687	0,617	423,80
N17	CA-50	10,00	197	16	0,617	9,72
N18	CA-50	10,00	339	542	0,617	334,66
N19	CA-50	10,00	100	144	0,617	88,85
N20	CA-50	10,00	517	744	0,617	459,34
					TOTAL CA-60	831
					TOTAL CA-50	3.262

**MUNICÍPIO DE ILHA COMPRIDA**  
**ESTÂNCIA BALNEÁRIA**  
 GESTÃO 2018 PREF. GERALDINO B. DE OLIVEIRA JR.  
**DEPARTAMENTO DE PROJETOS, OBRAS E SERVIÇOS**  
 AVENIDA BEIRA MAR, 11000 - CEP 11925-000

OBRA: OBRAS DE INFRAESTRUTURA  
 TURÍSTICA NA ORLA DO MAR PEQUENO

LOCAL: AV. 27 DE OUTUBRO, BALNEÁRIO MAR E SOL  
 ILHA COMPRIDA / SP

TÍTULO: PROJETO EXECUTIVO  
**ESTRUTURA**  
 DETALHE DAS VIGAS - FORMA/ARMADURA

PROJETO: ARQ. CAROLINE VAZ RODRIGUES - CAU A72611.7

DESENHO: JEFFERSON SANCHEZ - TÊC. EDIFICAÇÕES - CREA/SP 5063425690

REVISÃO	DESCRIÇÃO	DATA	RESP.
00	PROJETO EXECUTIVO	11/2018	C.V.R.

SERVIÇO: ESTRUTURA ART/RRT: ESCALA: INDICADA  
 DATA: NOV/2018 FORMATO: A1 FOLHA: 06/08