










GOVERNO DO ESTADO
DE SÃO PAULO
Secretaria do Meio Ambiente

LEGENDA



Limites Municipais do Estado
de São Paulo 1:50.000 (IGC)

 Limite Municipal

Áreas Contaminadas e
Reabilitadas - Ano 2019

-  Contaminada com risco confirmado (ACRi)
-  Contaminada em processo de reutilização (ACRu)
-  Contaminada sob investigação (ACI)
-  Em processo de monitoramento para encerramento (AME)
-  Em processo de remediação (ACRc)
-  Reabilitada para o uso declarado (AR)

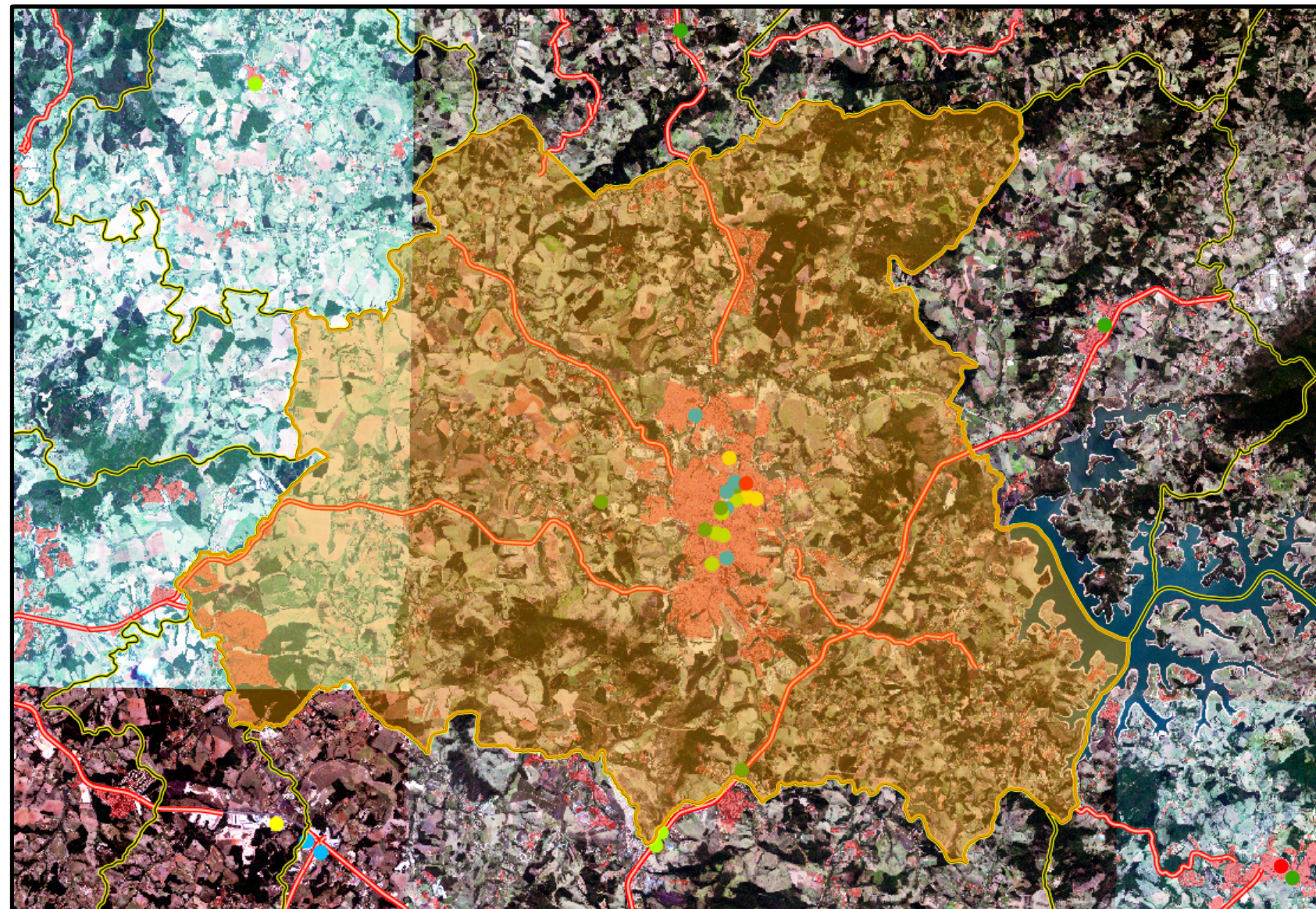
Logradouros

-  Rodovias
-  Vias Principais
-  Ruas

Áreas Urbanas

-  Mancha Urbana

Imagens RapidEye 2013/2014



Áreas Contaminadas e Reabilitadas em 2019 no Município de Bragança Paulista

ELABORADO POR: Nádia
Zachareczuk

DATA :20/09/2020

DATUM HORIZONTAL: SIRGAS 2000
SISTEMA DE COORDENADAS GEOGRÁFICAS
ESCALA GRÁFICA

0 2 4 6km



 **DataGEO**
Sistema Ambiental Paulista