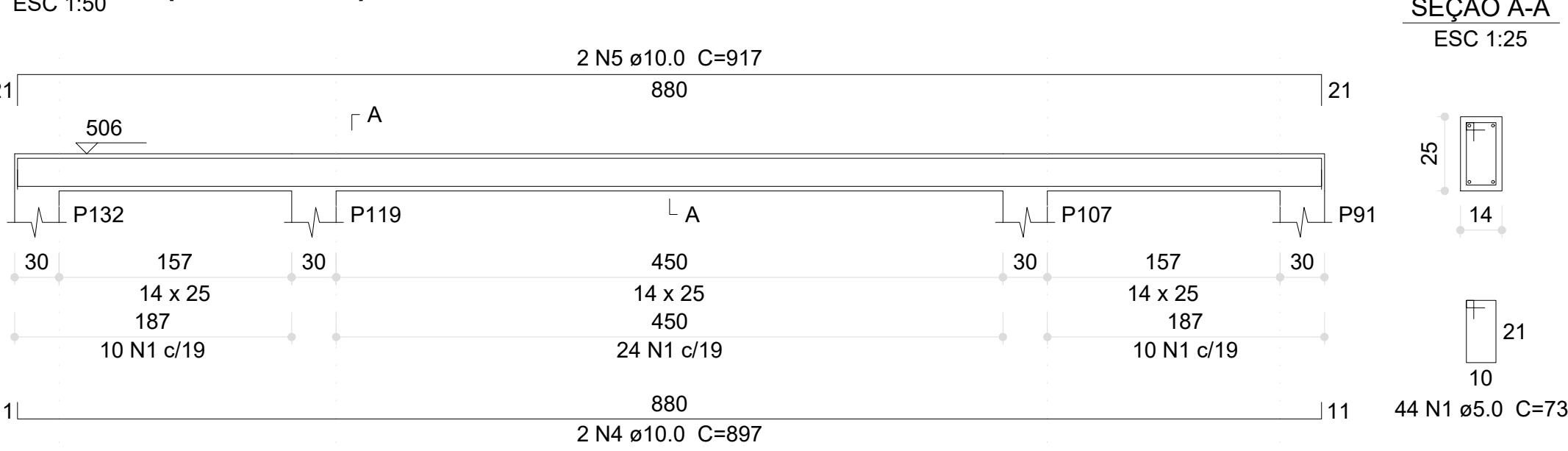
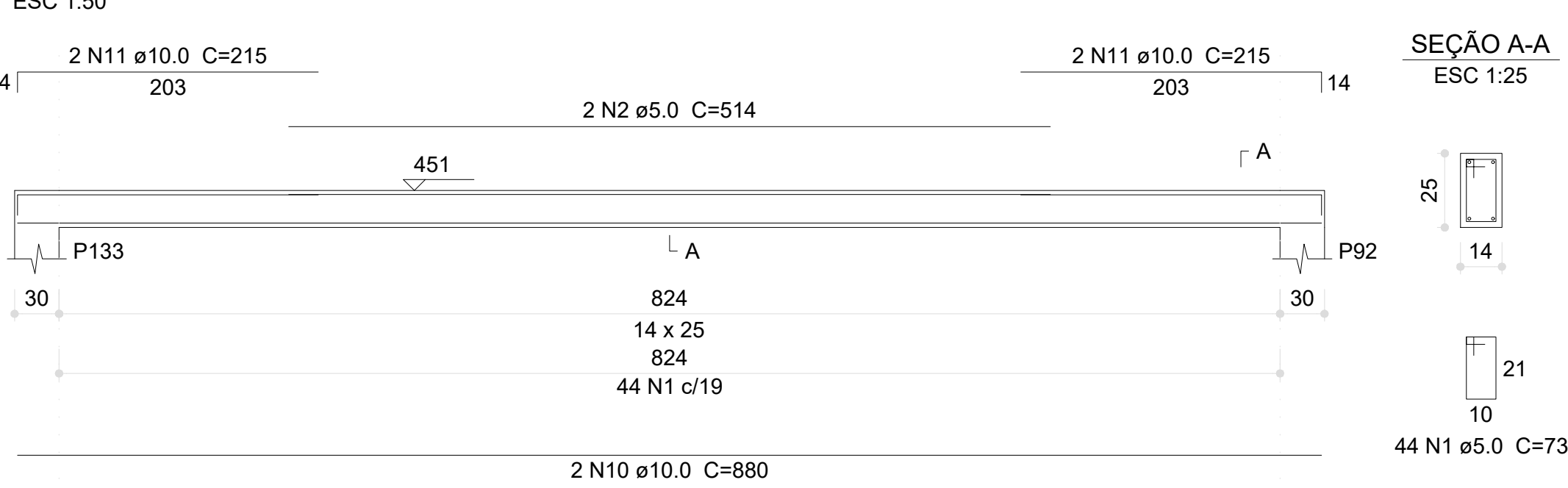


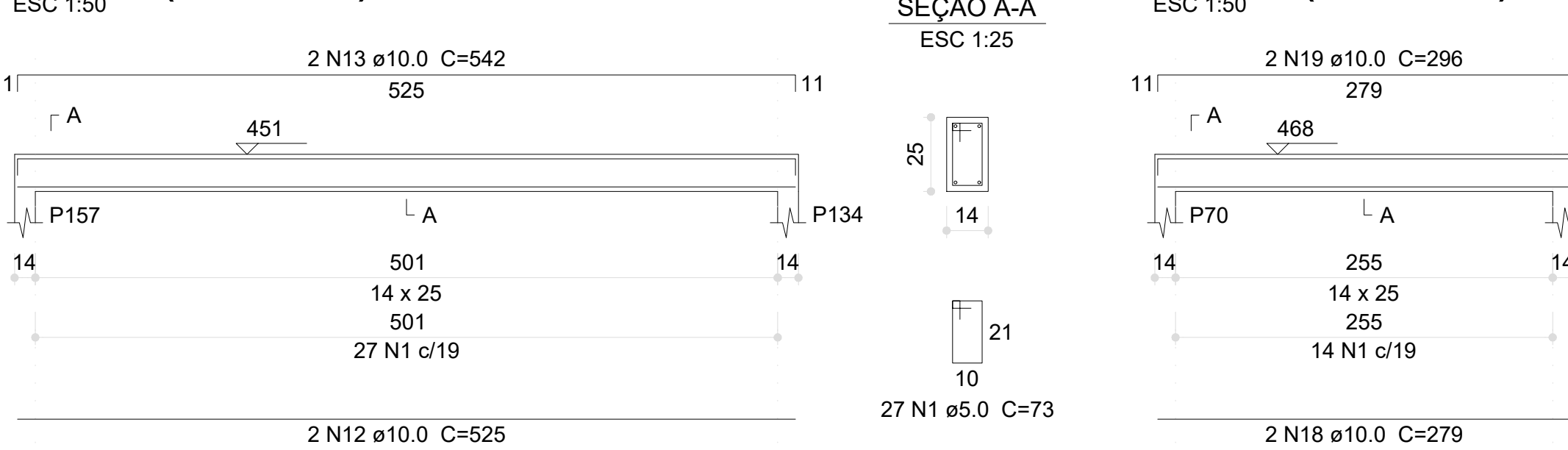
V238 (14 x 25)



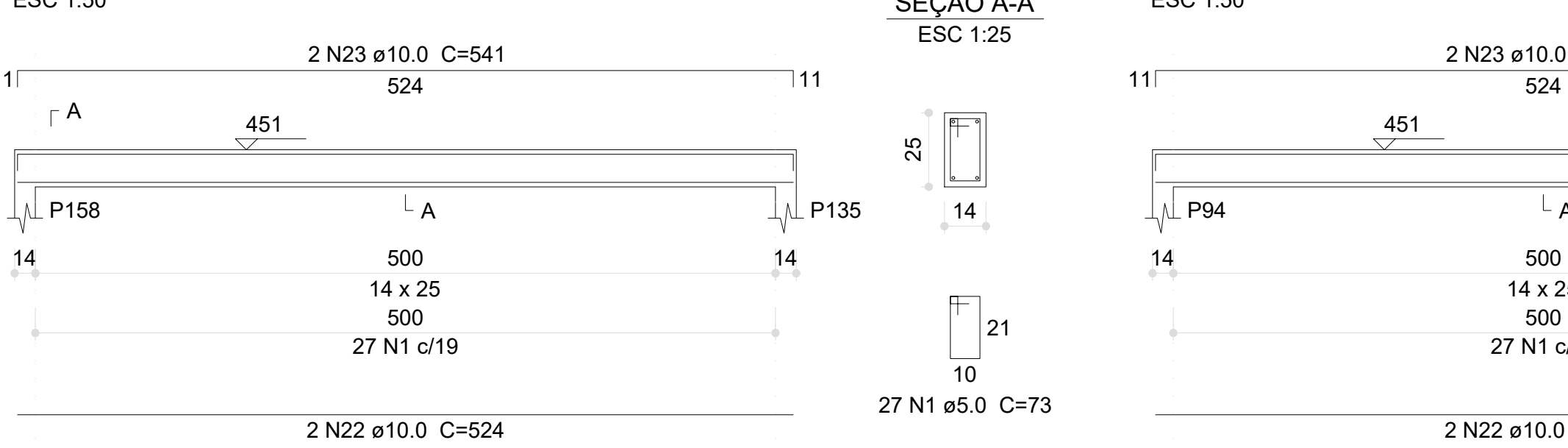
V245 (14 x 25)



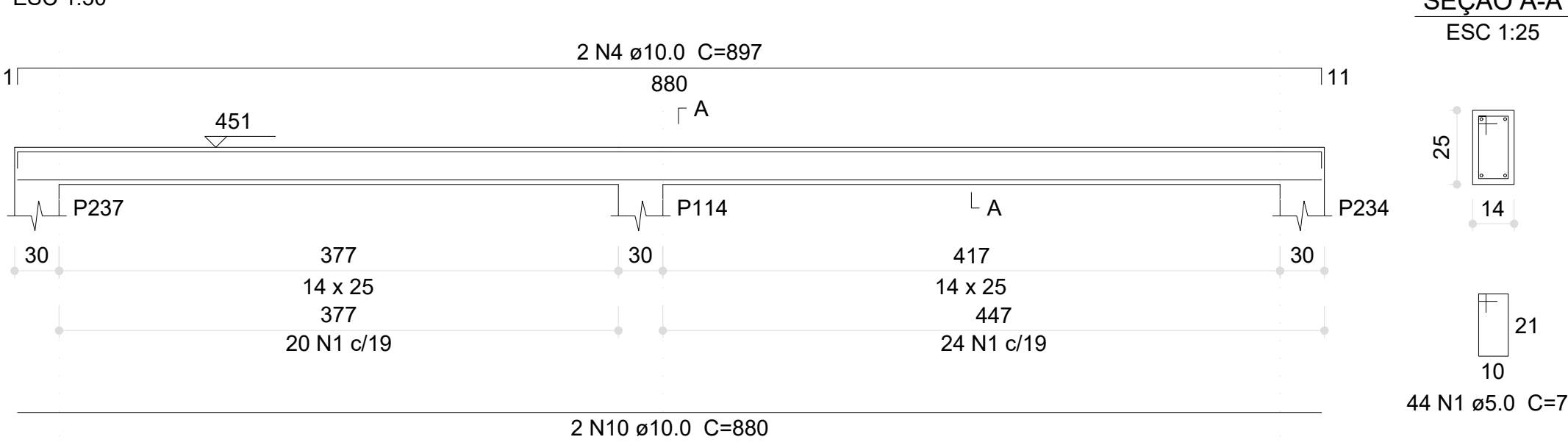
V249 (14 x 25)



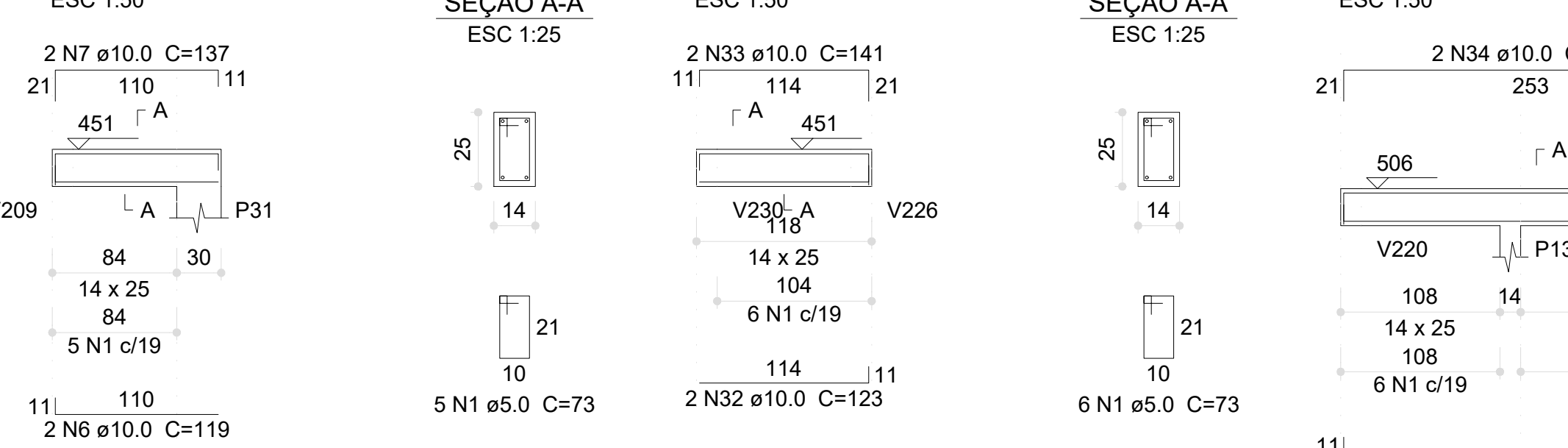
V255 (14 x 25)



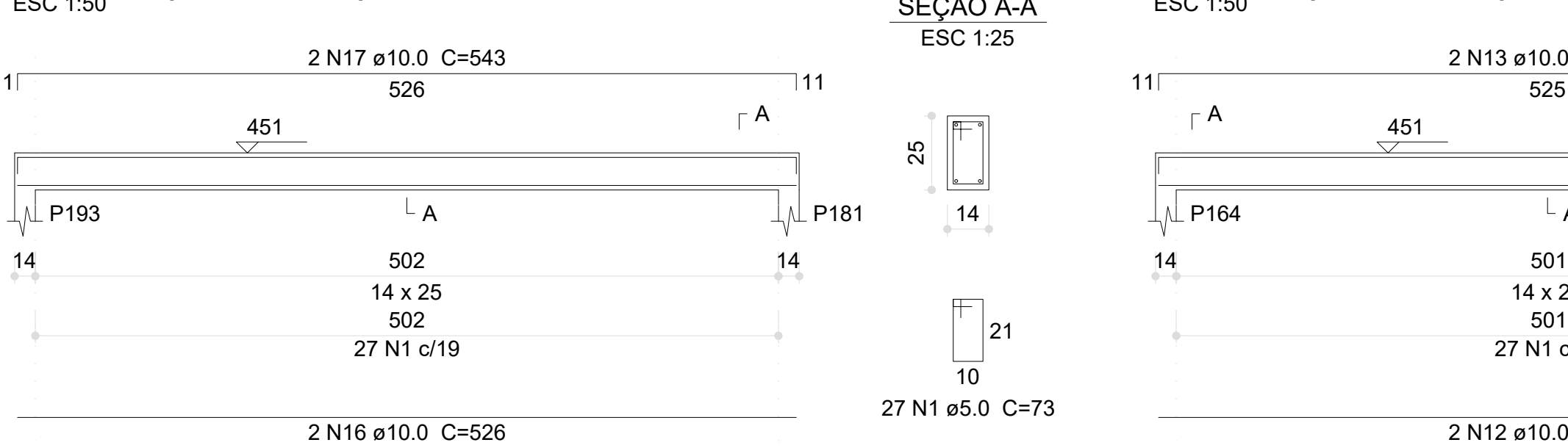
V260 (14 x 25)



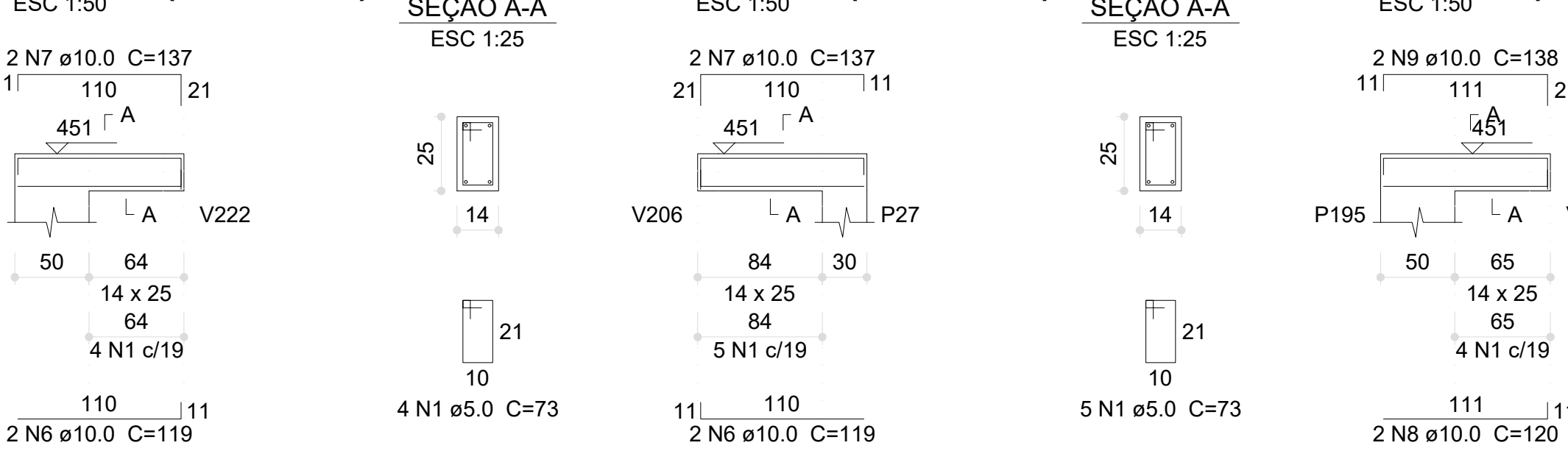
V265 (14 x 25)



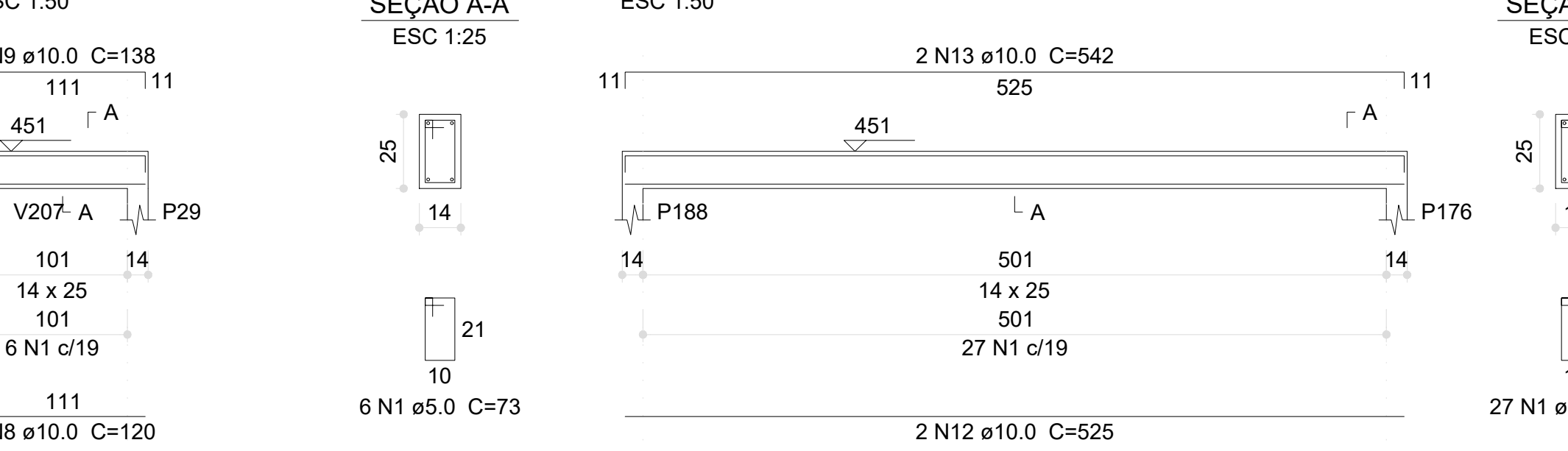
V269 (14 x 25)



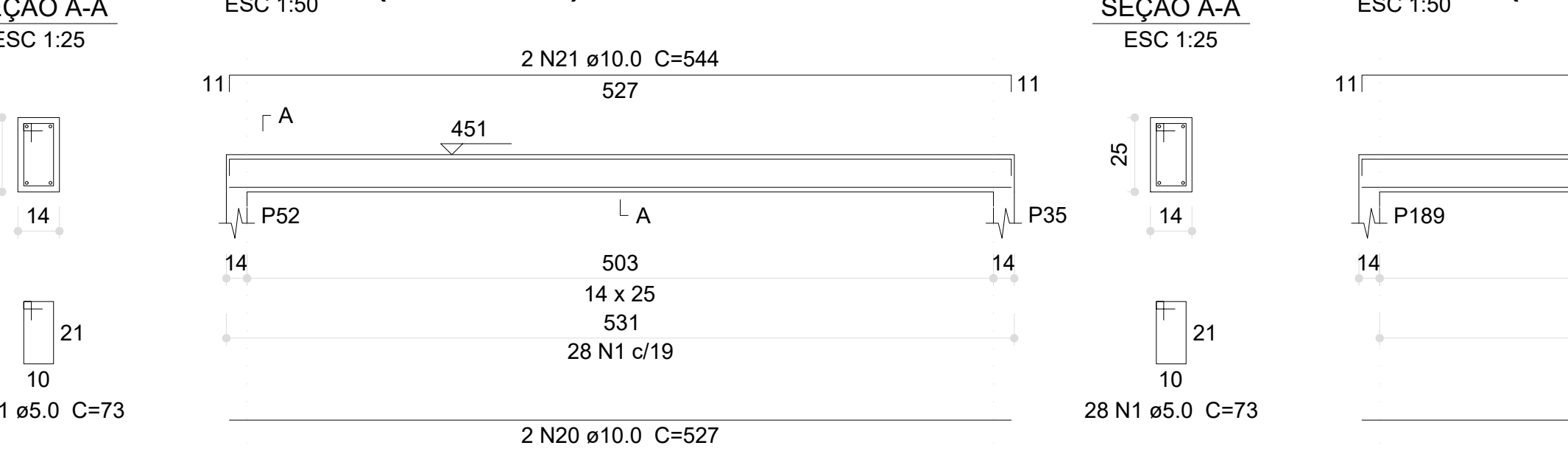
V240 (14 x 25)



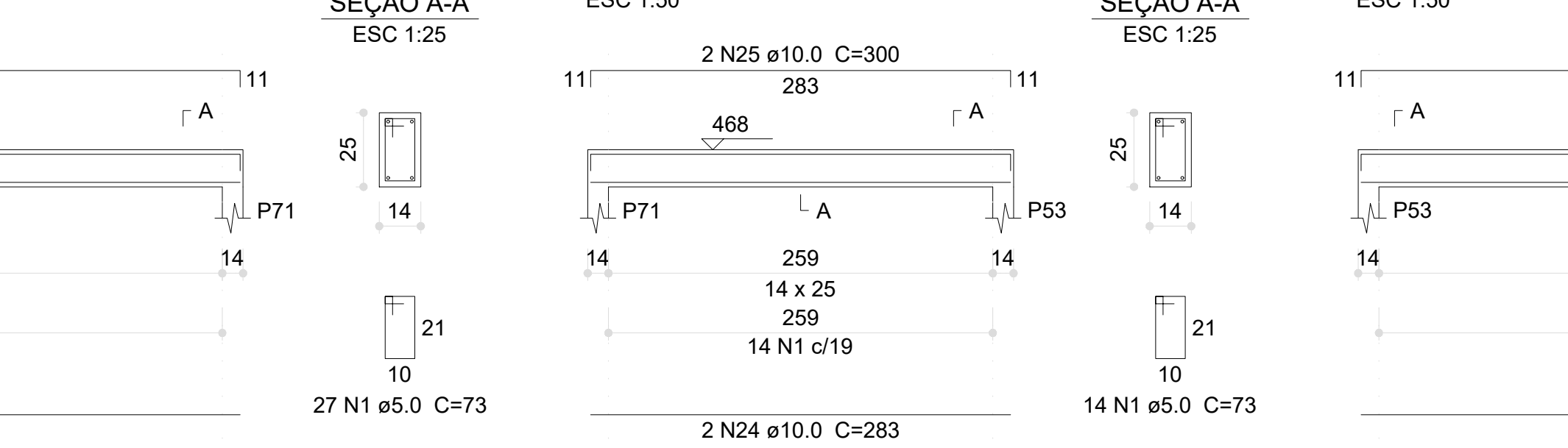
V246 (14 x 25)



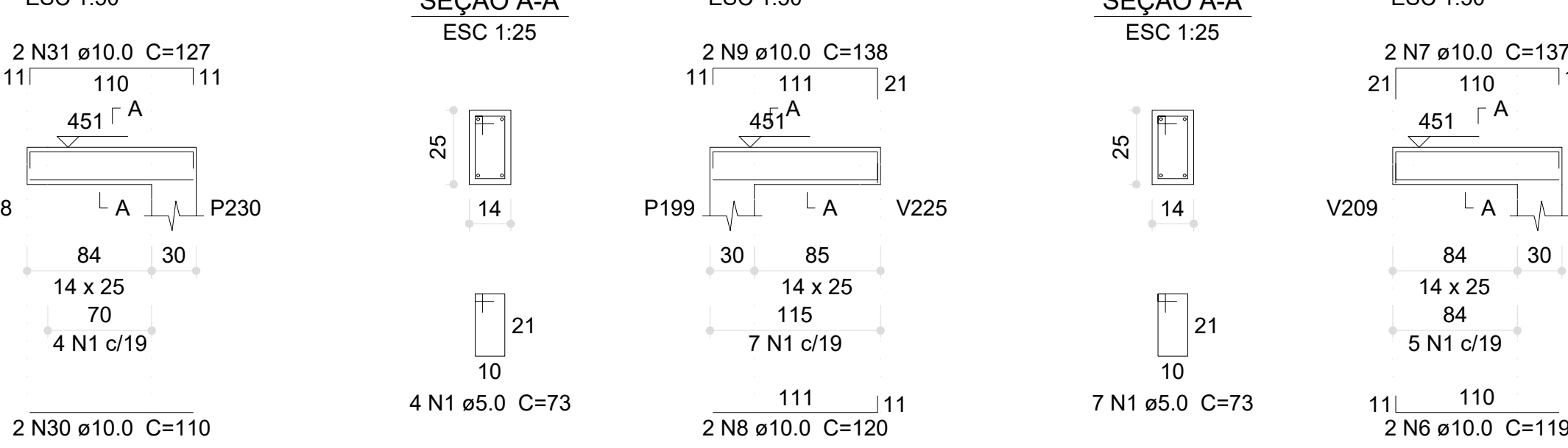
V252 (14 x 25)



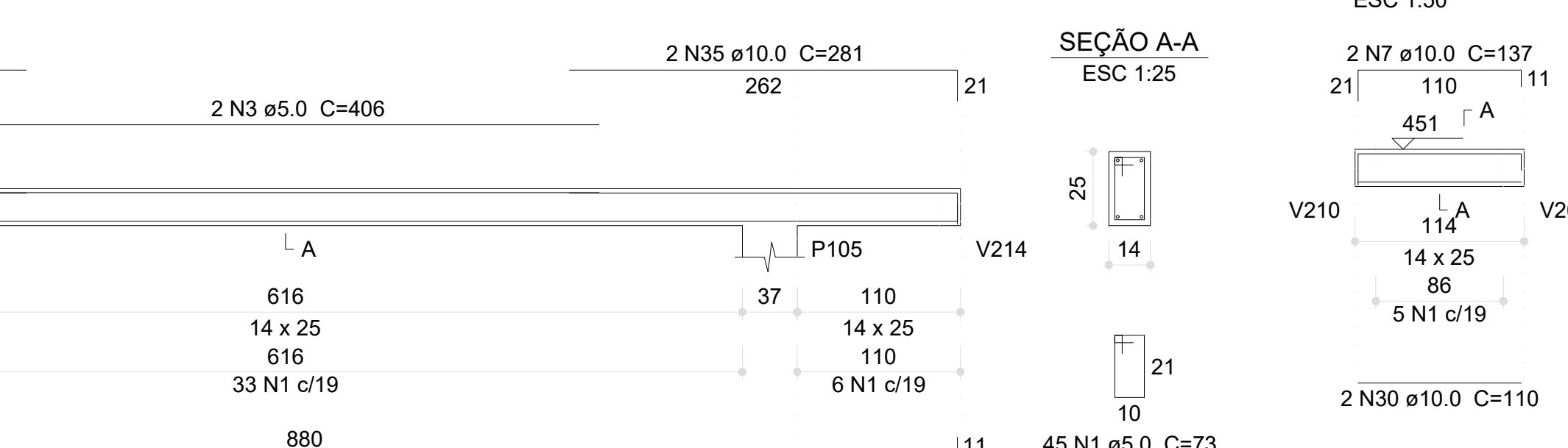
V257 (14 x 25)



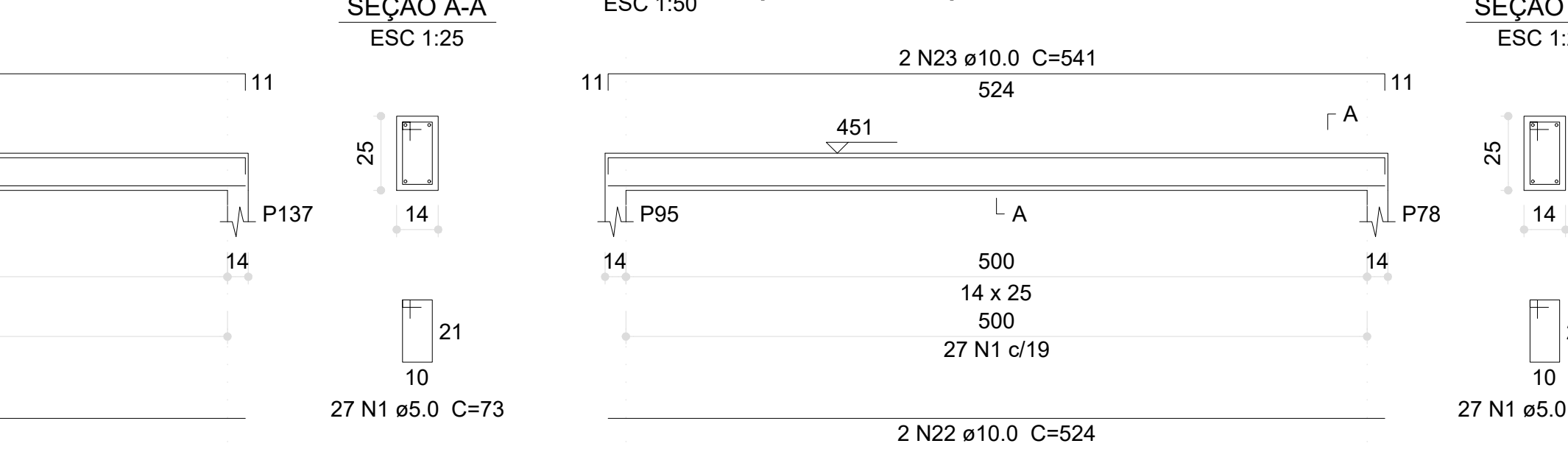
V261 (14 x 25)



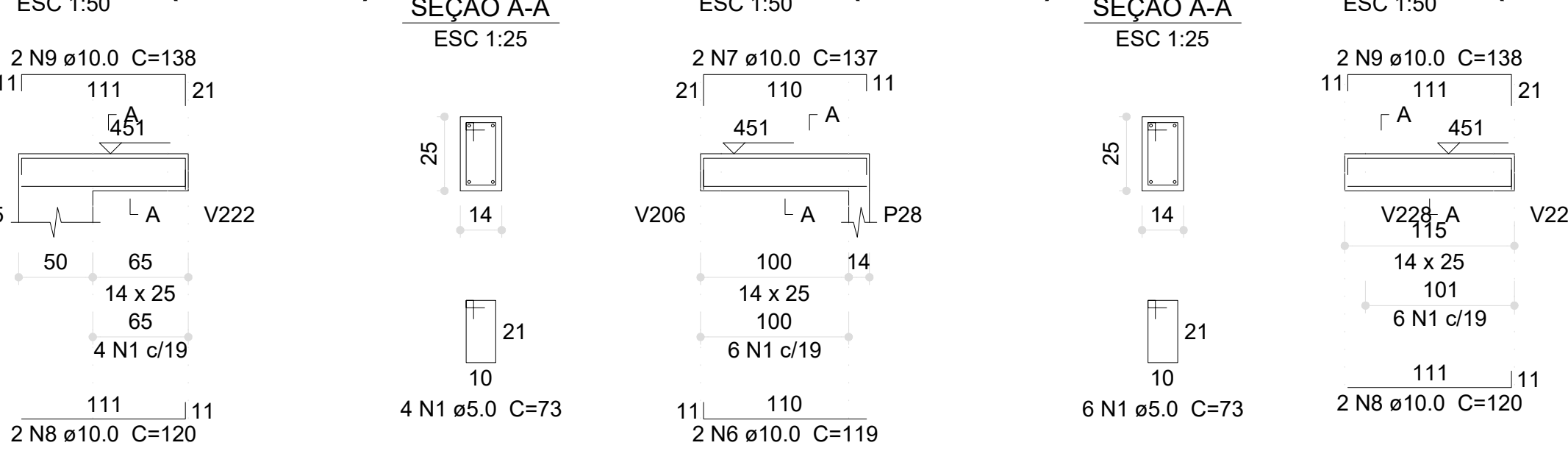
V262 (14 x 25)



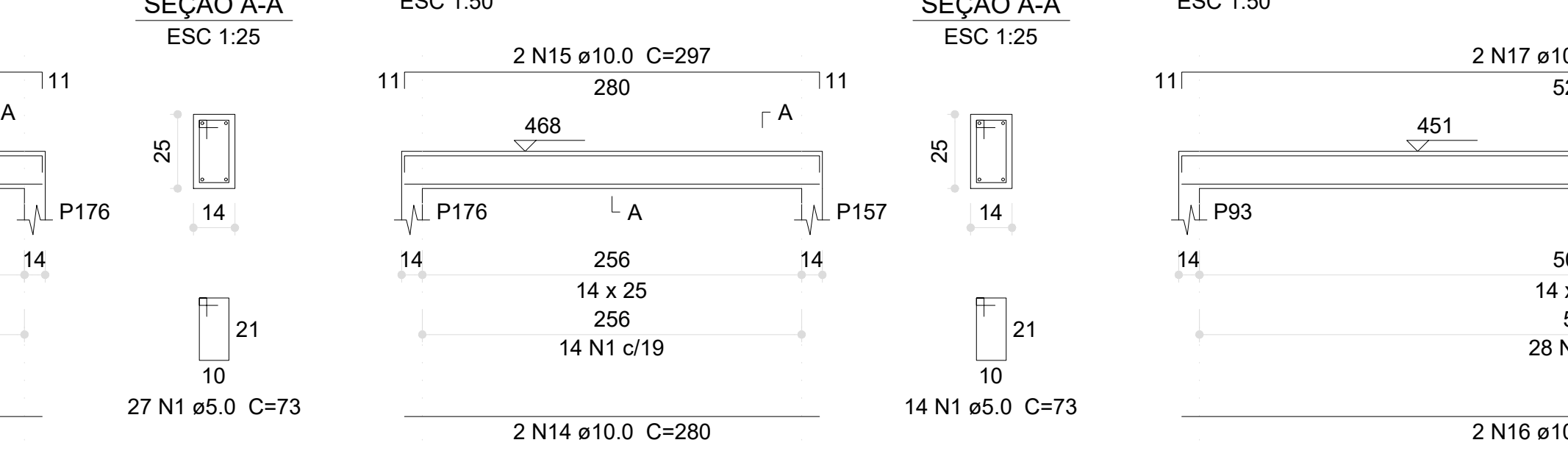
V272 (14 x 25)



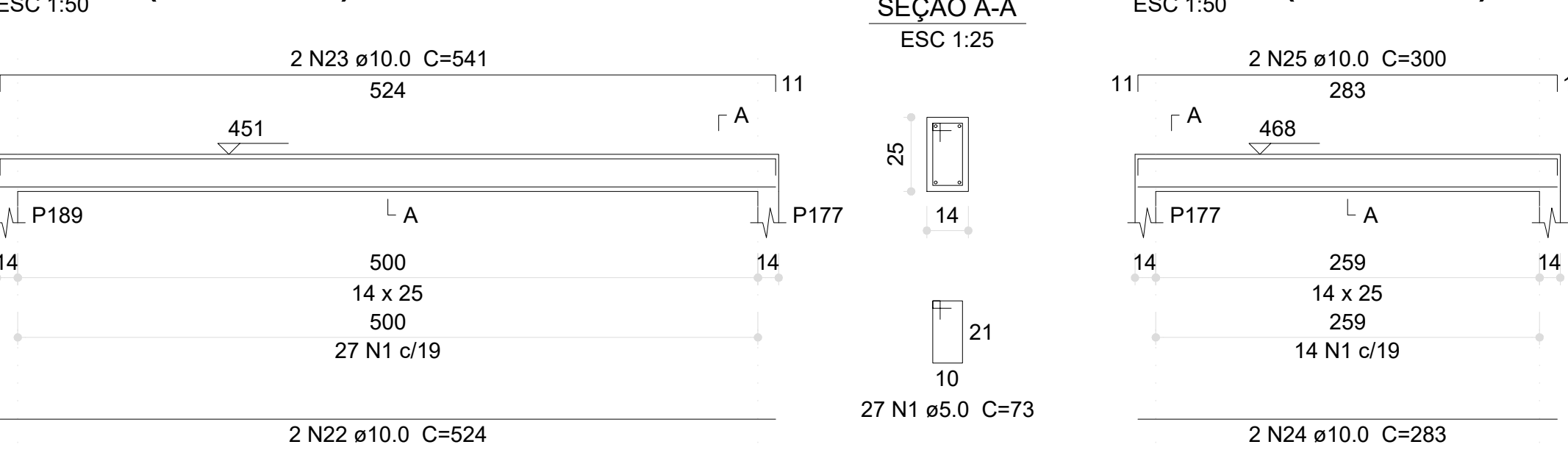
V242 (14 x 25)



V248 (14 x 25)



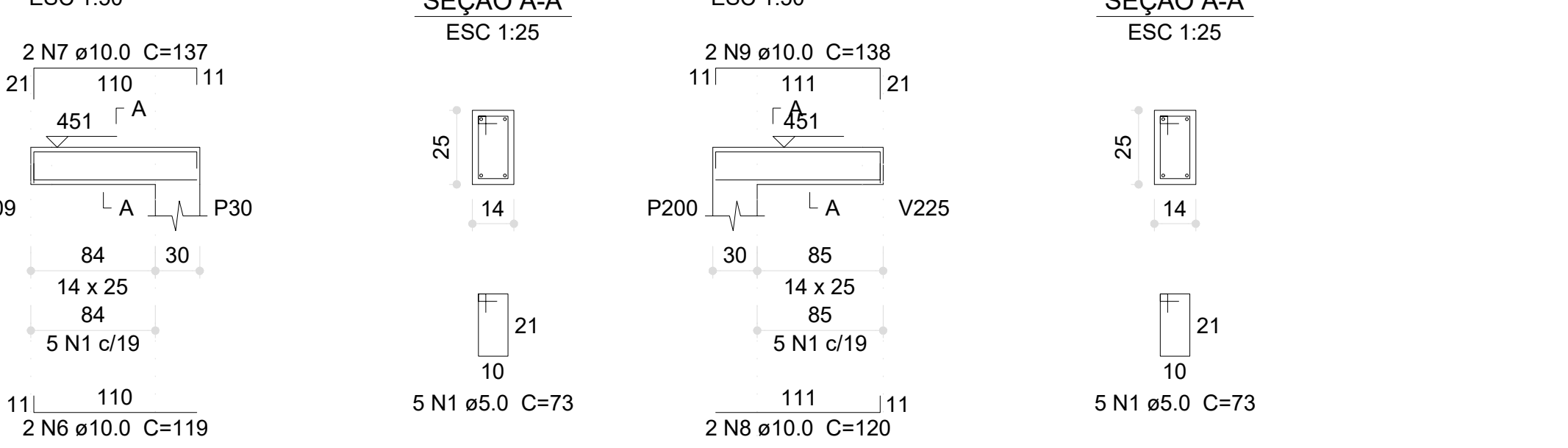
V253 (14 x 25)



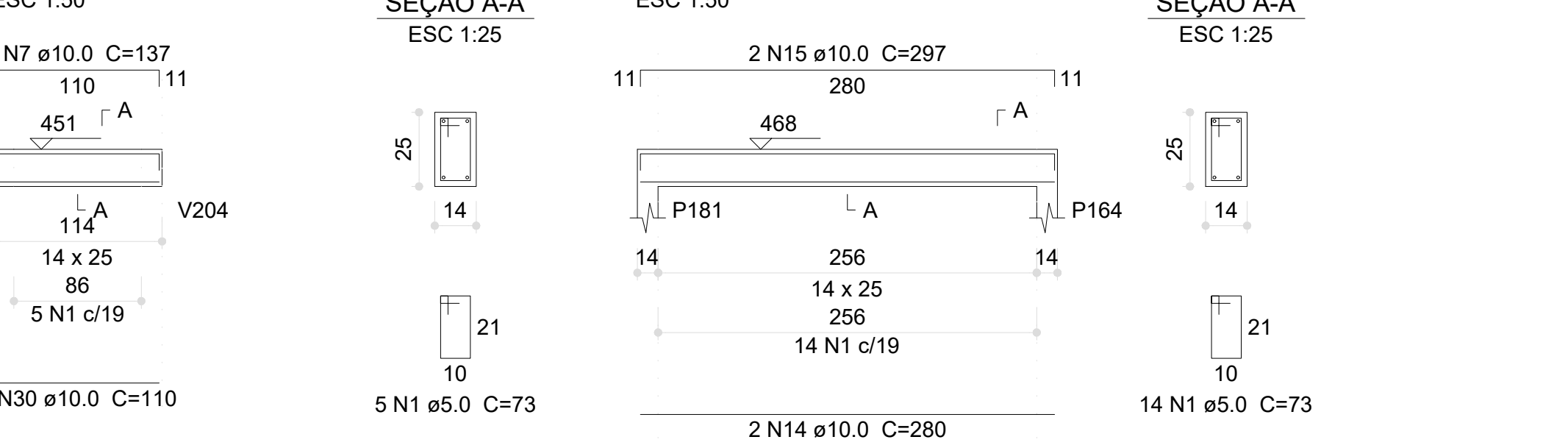
V258 (14 x 25)



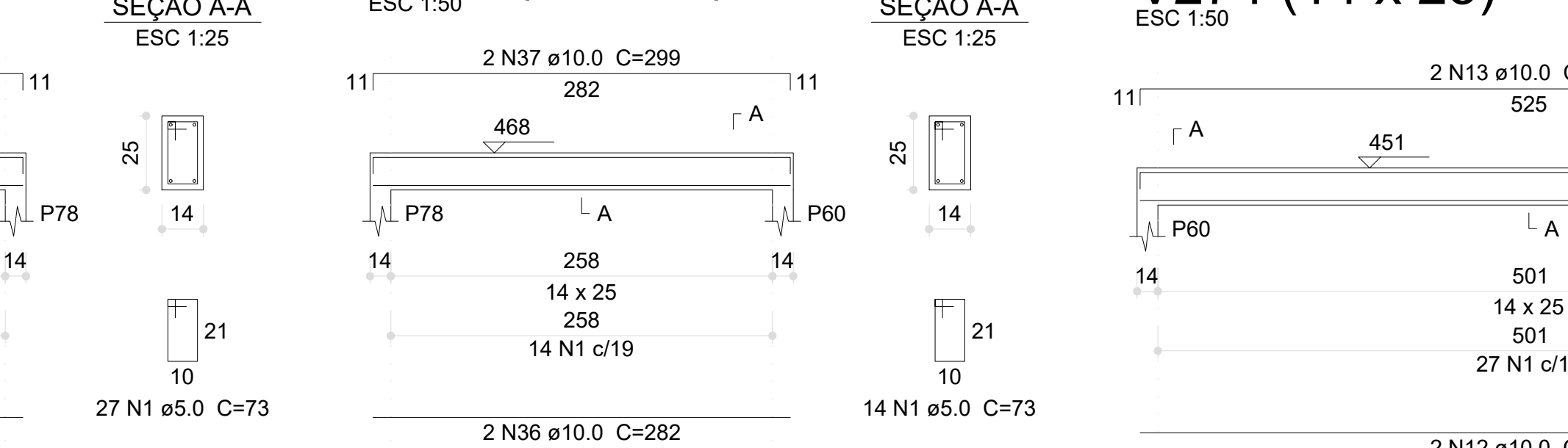
V263 (14 x 25)



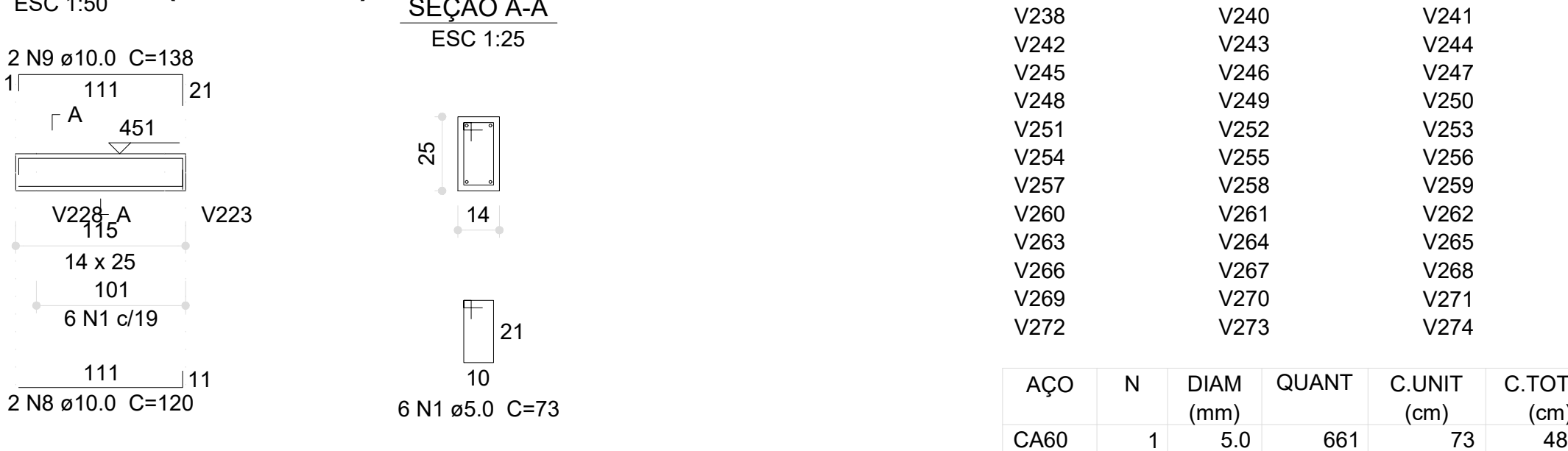
V268 (14 x 25)



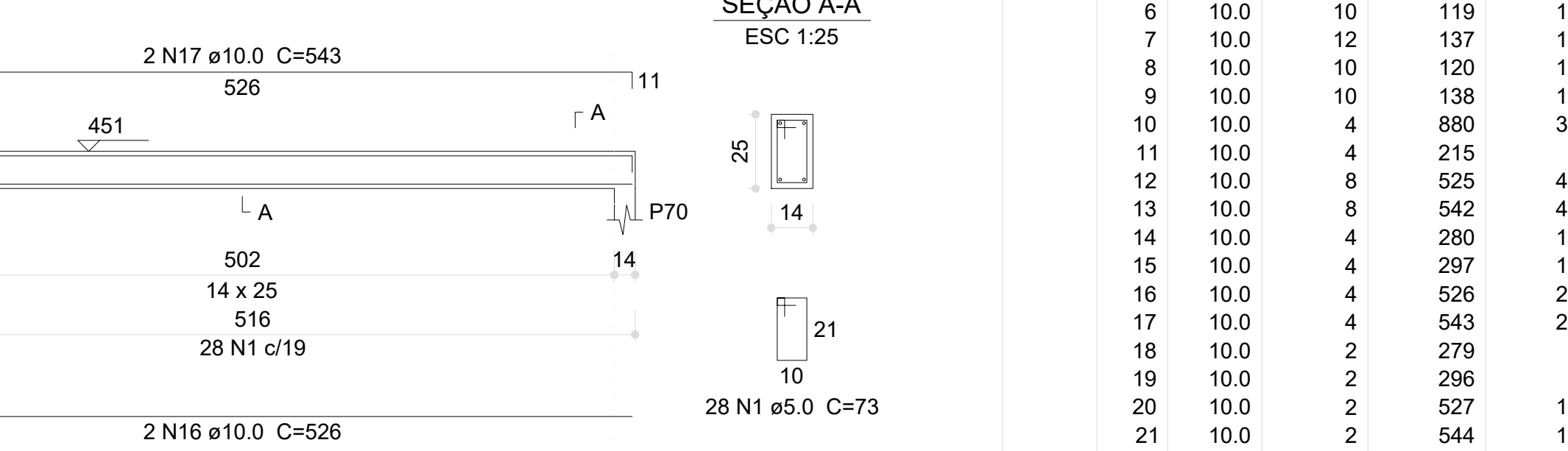
V273 (14 x 25)



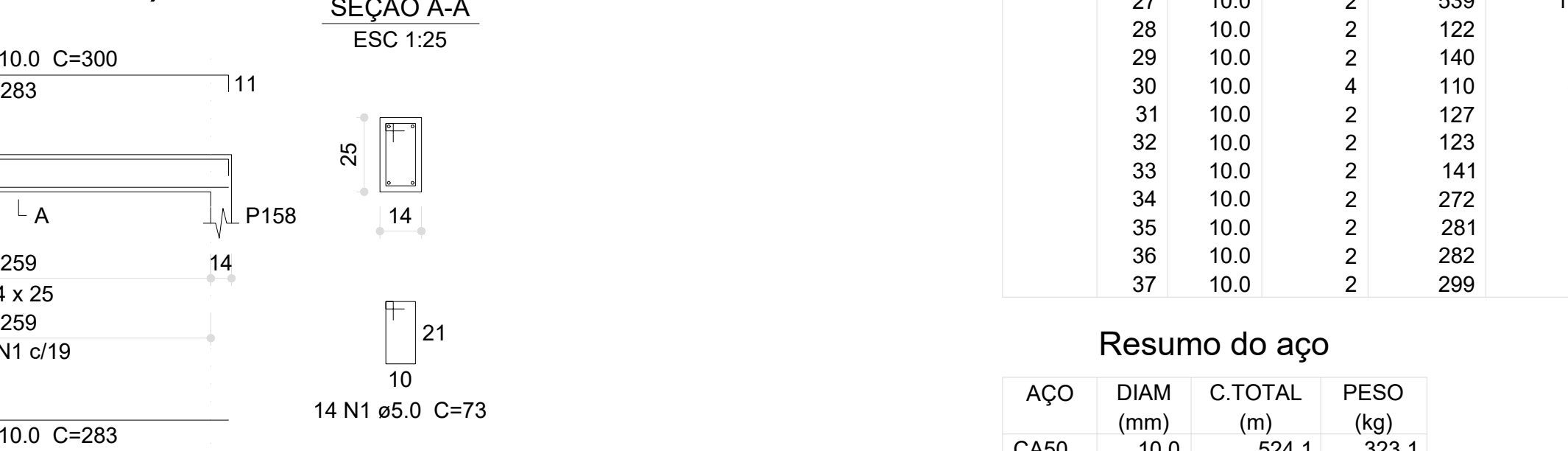
V244 (14 x 25)



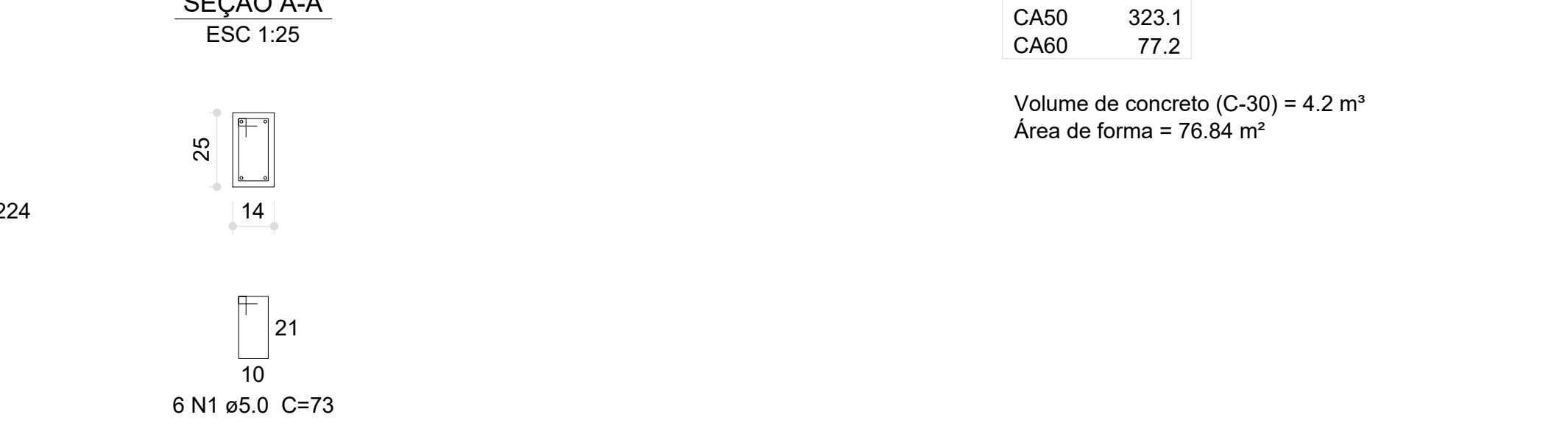
V250 (14 x 25)



V254 (14 x 25)



V259 (14 x 25)



Relação do aço

AÇO	N	DIAM (mm)	QUANT	C.UNIT (cm)	C.TOTAL (cm)
CA60	1	5.0	661	73	48253
	2	5.0	2	514	1028
	3	5.0	2	406	812
CA50	4	10.0	6	597	5382
	5	10.0	2	917	1834
	6	10.0	10	119	1190
	7	10.0	12	137	1644
	8	10.0	10	120	1200
	9	10.0	10	138	1380
	10	10.0	4	880	3520
	11	10.0	4	215	860
	12	10.0	8	525	4200
	13	10.0	8	542	4336
	14	10.0	4	280	1120
	15	10.0	4	297	1188
	16	10.0	4	526	2104
	17	10.0	4	543	2172
	18	10.0	2	279	558
	19	10.0	2	598	592
	20	10.0	2	527	1054
	21	10.0	2	544	1088
	22	10.0	8	524	4192
	23	10.0	8	541	4328
	24	10.0	4	283	1132
	25	10.0	4	300	1200
	26	10.0	2	522	1044
	27	10.0	2	539	1078
	28	10.0	2	122	244
	29	10.0	2	140	280
	30	10.0	4	110	440
	31	10.0	2	127	254
	32	10.0	2	123	246
	33	10.0	2	141	282
	34	10.0	2	272	544
	35	10.0	2	281	562
	36	10.0	2	282	564
	37	10.0	2	299	598

Resumo do aço

AÇO	DIAM (mm)	C.TOTAL (m)	PESO (kg)
CA50	10.0	524.1	323.1
CA60	5.0	501	77.2
PESO TOTAL (kg)			
CA50		323.1	
CA60		77.2	

Volume de concreto (C-30) = 4.2 m³
Área de forma = 76.84 m²

03	JANEIRO/ 2023	Revisão geral da disciplina conforme a atualização da arquitetura. Redimensionamento dos elementos estruturais e acríscimo de elementos para adequação da arquitetura. Alterando a NBR 6120/2014 e NBR 6120/2015.
02	JANEIRO/ 2017	Acrescimento à NBR 6050/2015. Alteração: quadro de áreas, fechamento frontal, sanitários 1 e 2, altura da plataforma, mobiliário e equipamento, altura da sanetaria nos sanitários, cor dos portões dos sanitários e altura de porta Pm. Acrescimento: gradil e quadro de cargas no castelo d'água, de duchas higiênicas e escaninhos pré-escola.
01	JULHO/ 2016	Alteração paredes - shaft para tubulação hidráulica e detalhamento; alteração da altura da plataforma.
Nº	DATA	DESCRIÇÃO

CONTROLE DE REVISÕES

PROJETO PADRÃO - FNE	
PROPRIETÁRIO:	
ENDEREÇO:	
MUNICÍPIO - UF:	
PROPRIETÁRIO:	
RESP. TÉCNICO:	CAU / CREA
AUTOR DO PROJETO:	CAU / CREA
APROVAÇÕES	CAU / CREA
PREFEITURA / RA	
OBSERVAÇÕES:	
<p>CRECHE PRÉ-ESCOLA TIPO 1</p> <p>PROJETO DE ESTRUTURA DE CONCRETO</p>	
COORDENAÇÃO	DETALHAMENTO ARMAÇÃO DAS VIGAS
CCEST - Coordenação Geral de Infraestrutura Educacional	PAVIMENTO COBERTURA PARTE 02
REVISÃO	ESCALA
R.00 R.03 R.01 R.02	1:25; 1:50
FORMATO (1189x841)	DATA EMISSÃO
	JAN/2023
PRANCHAS	
28/30	