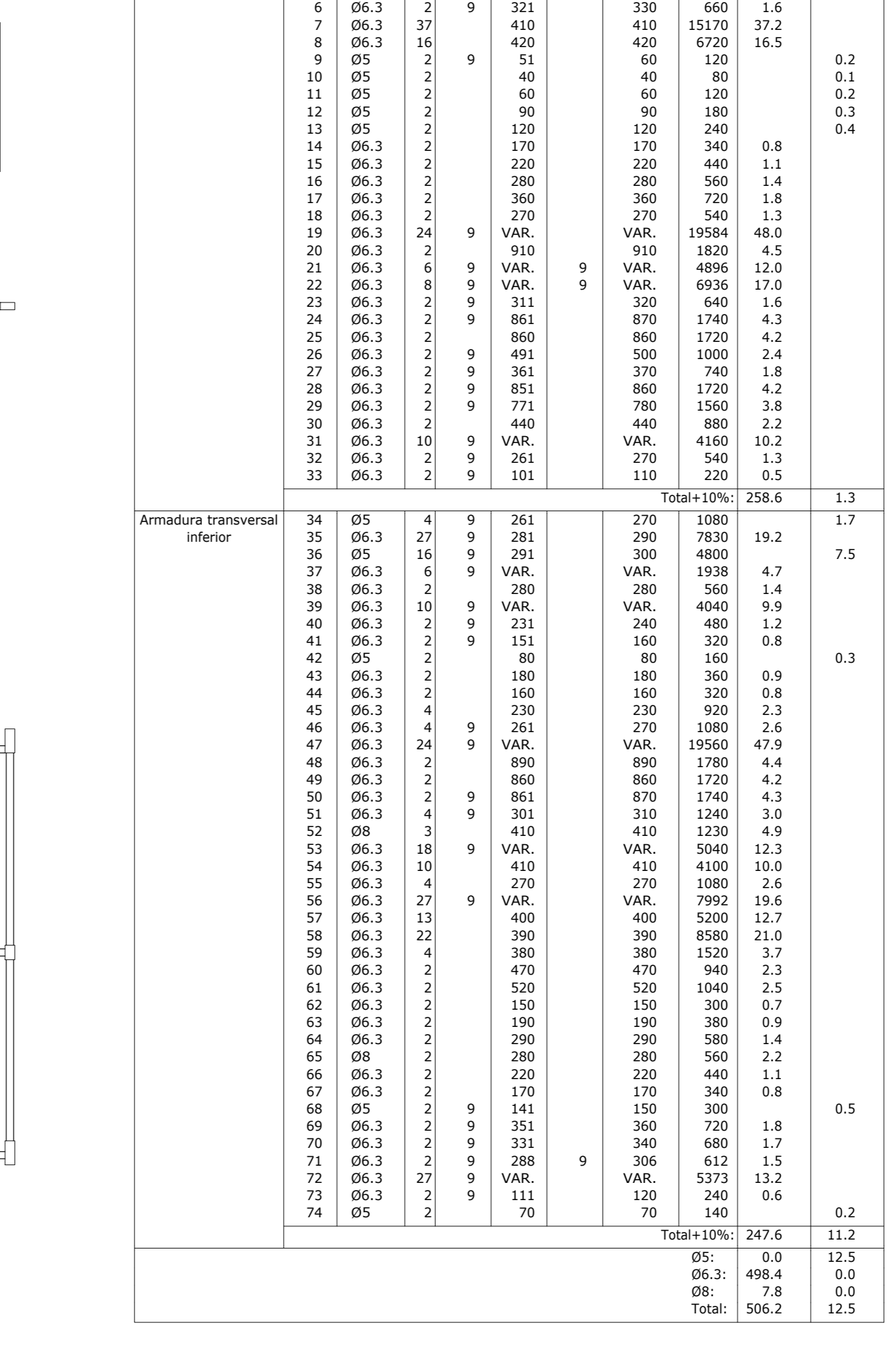
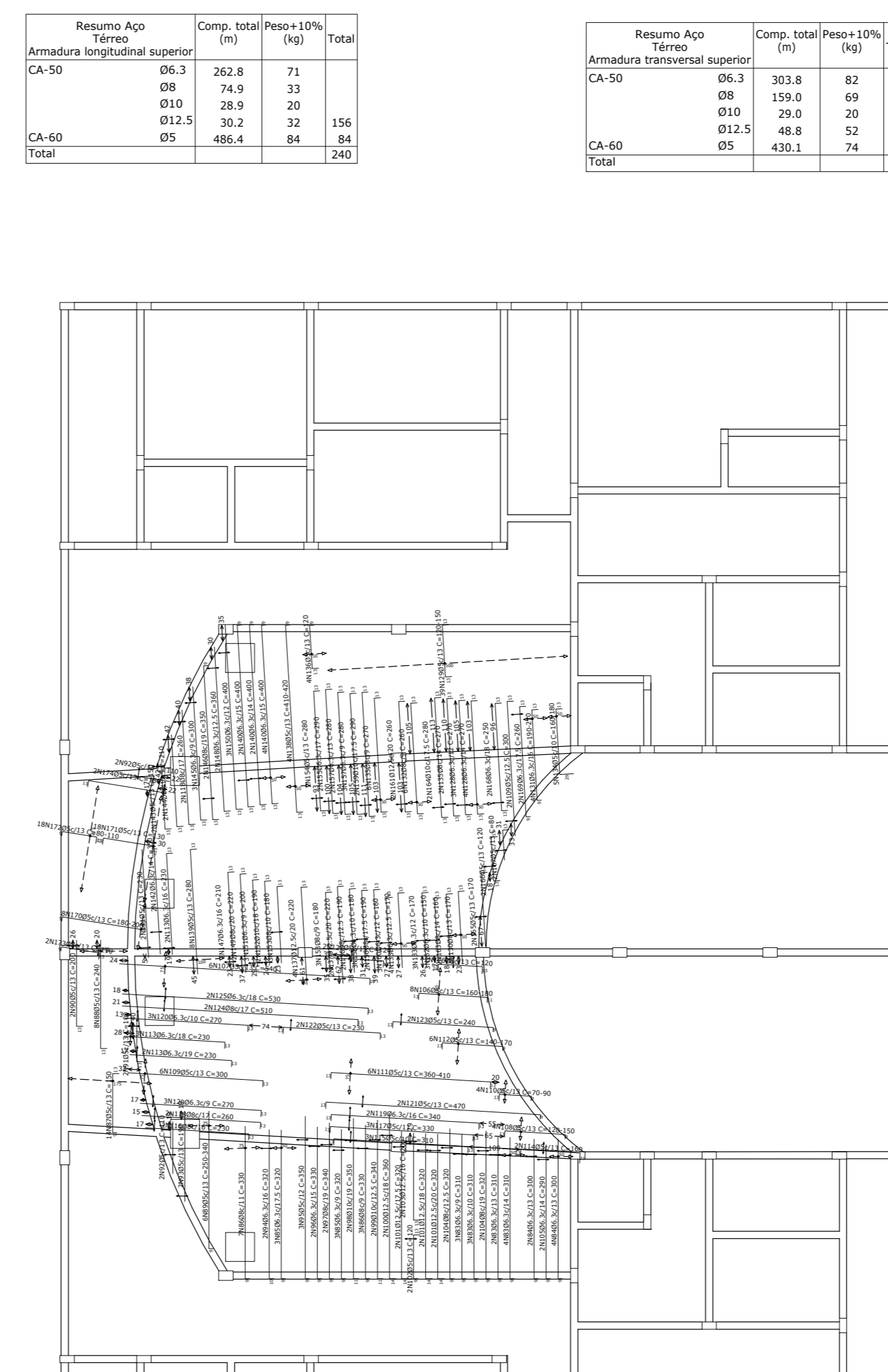
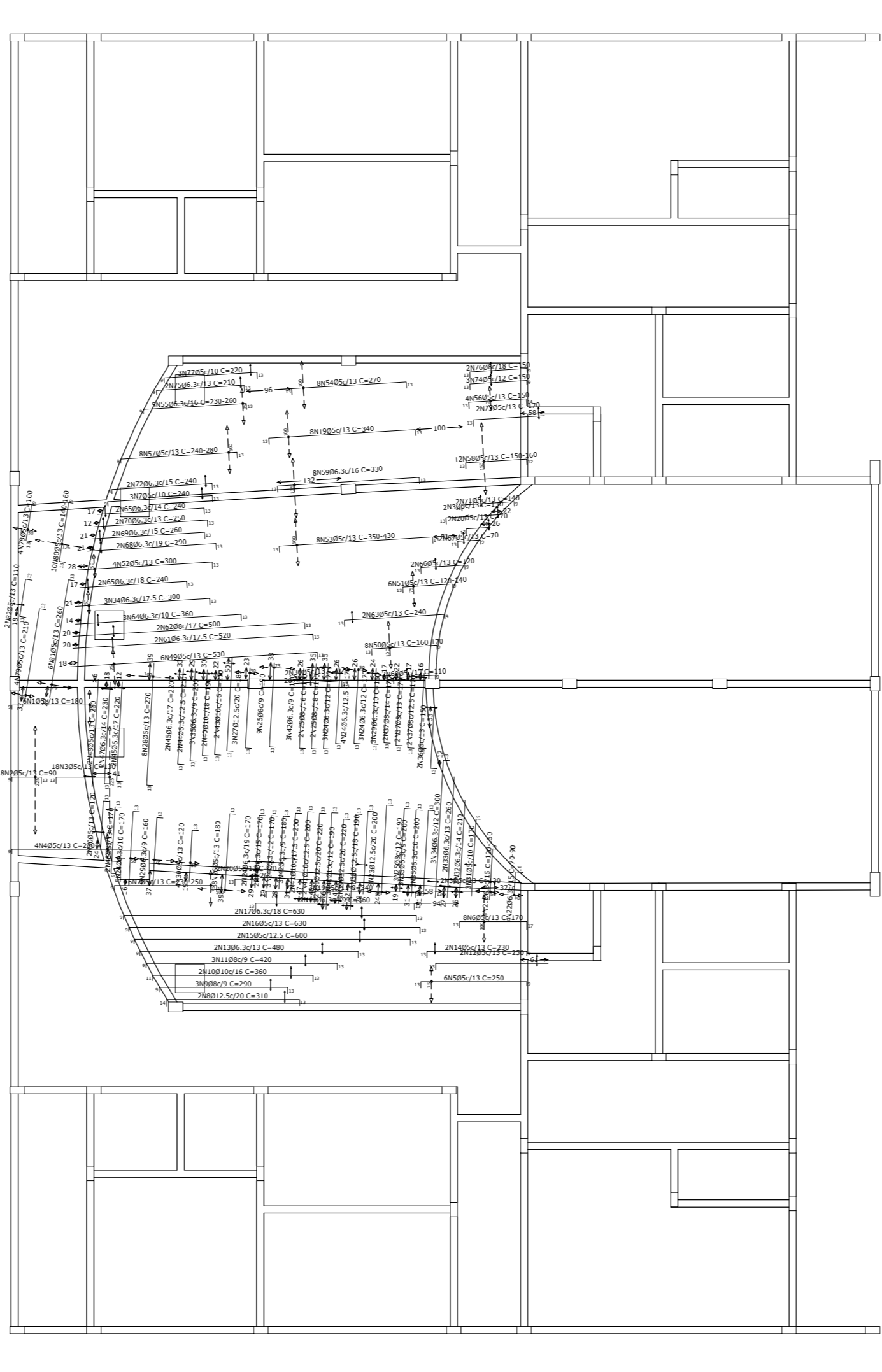
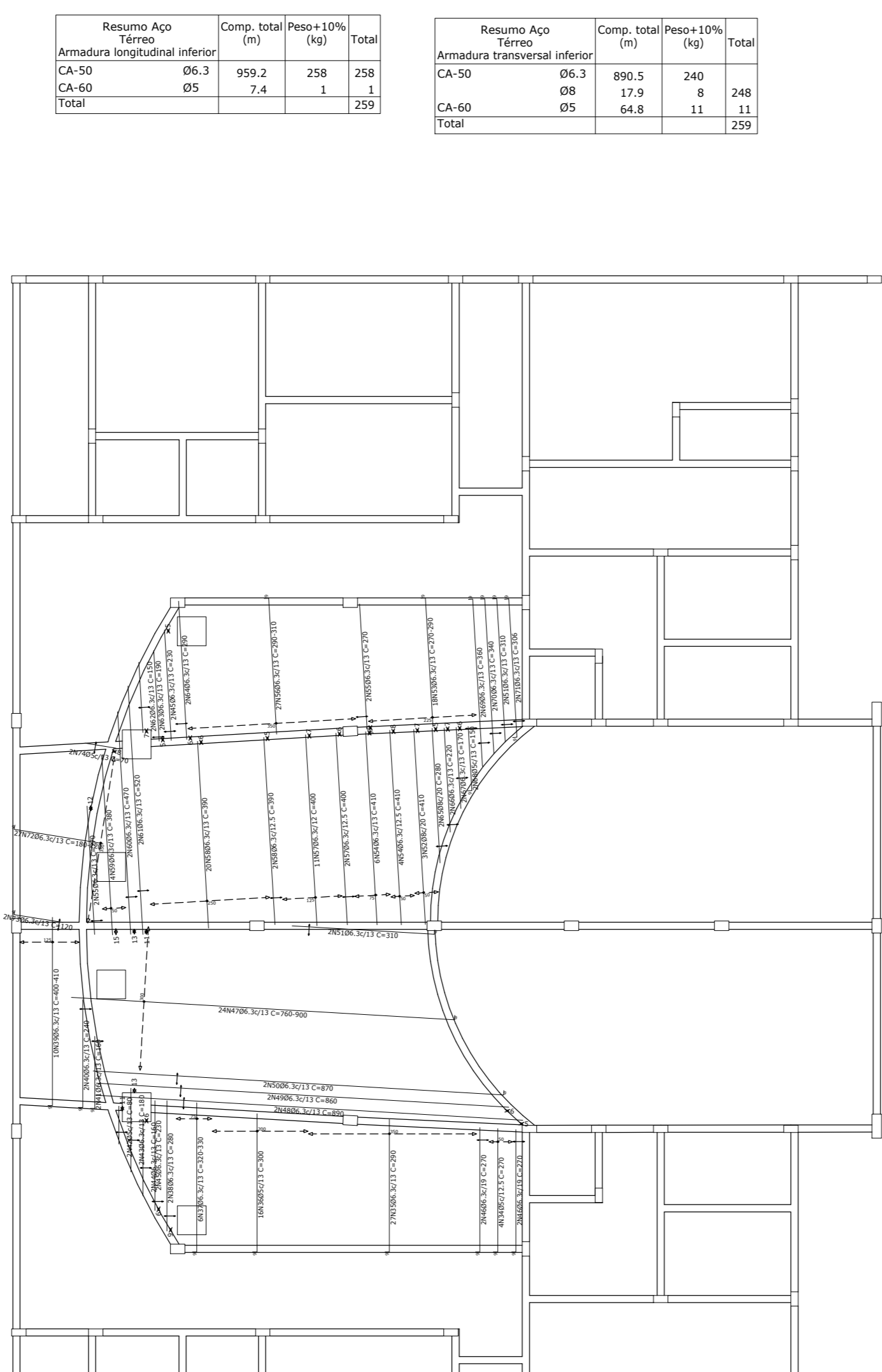
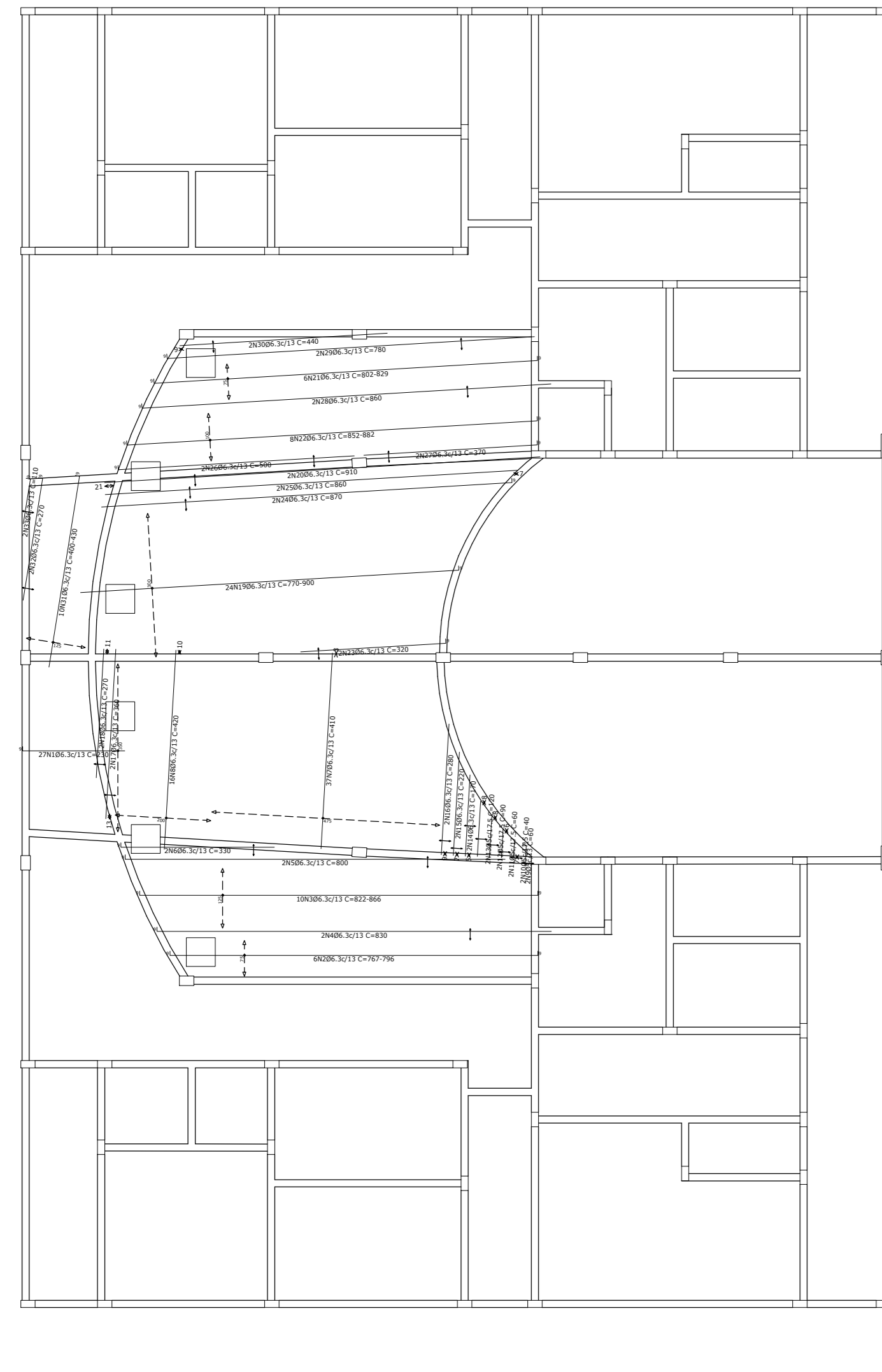
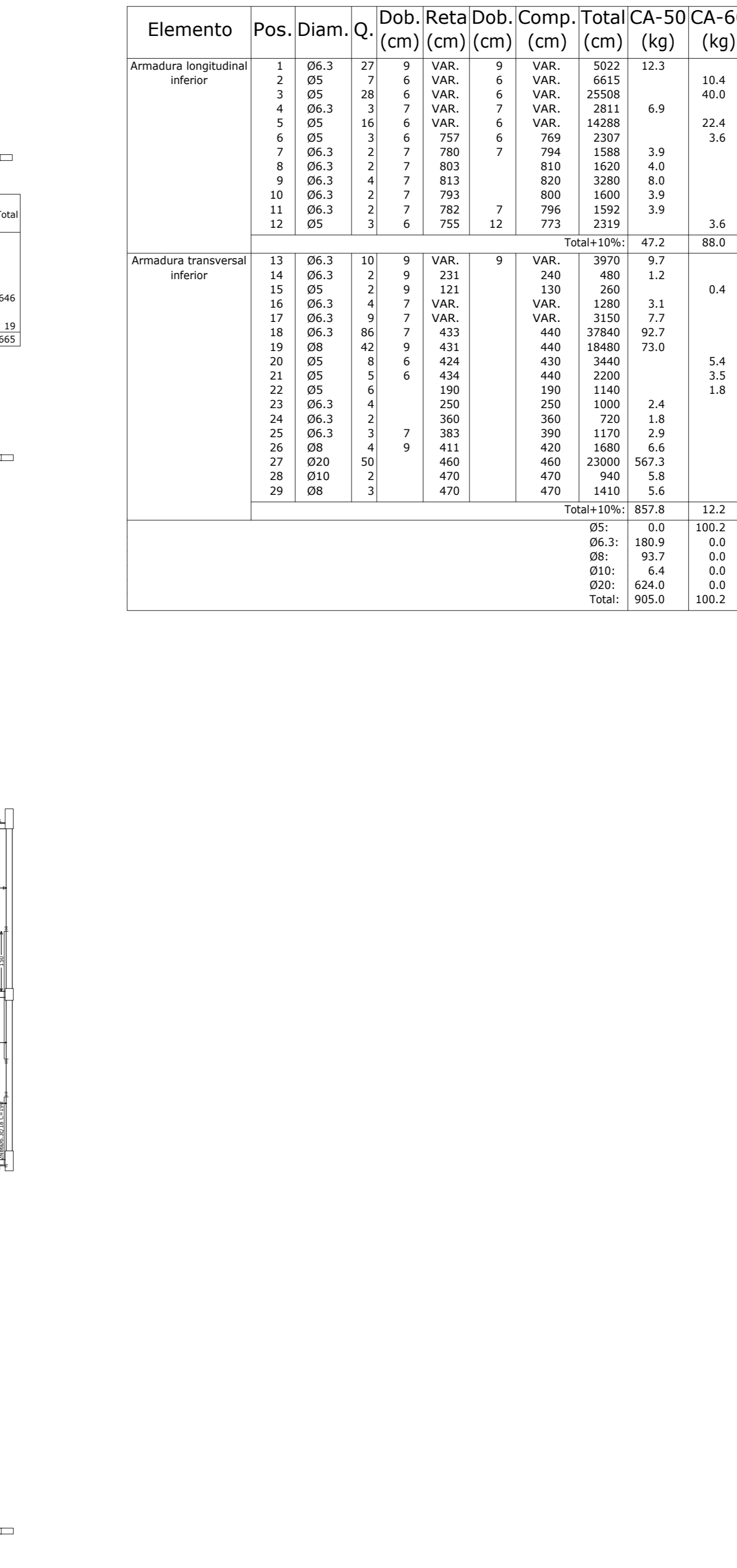
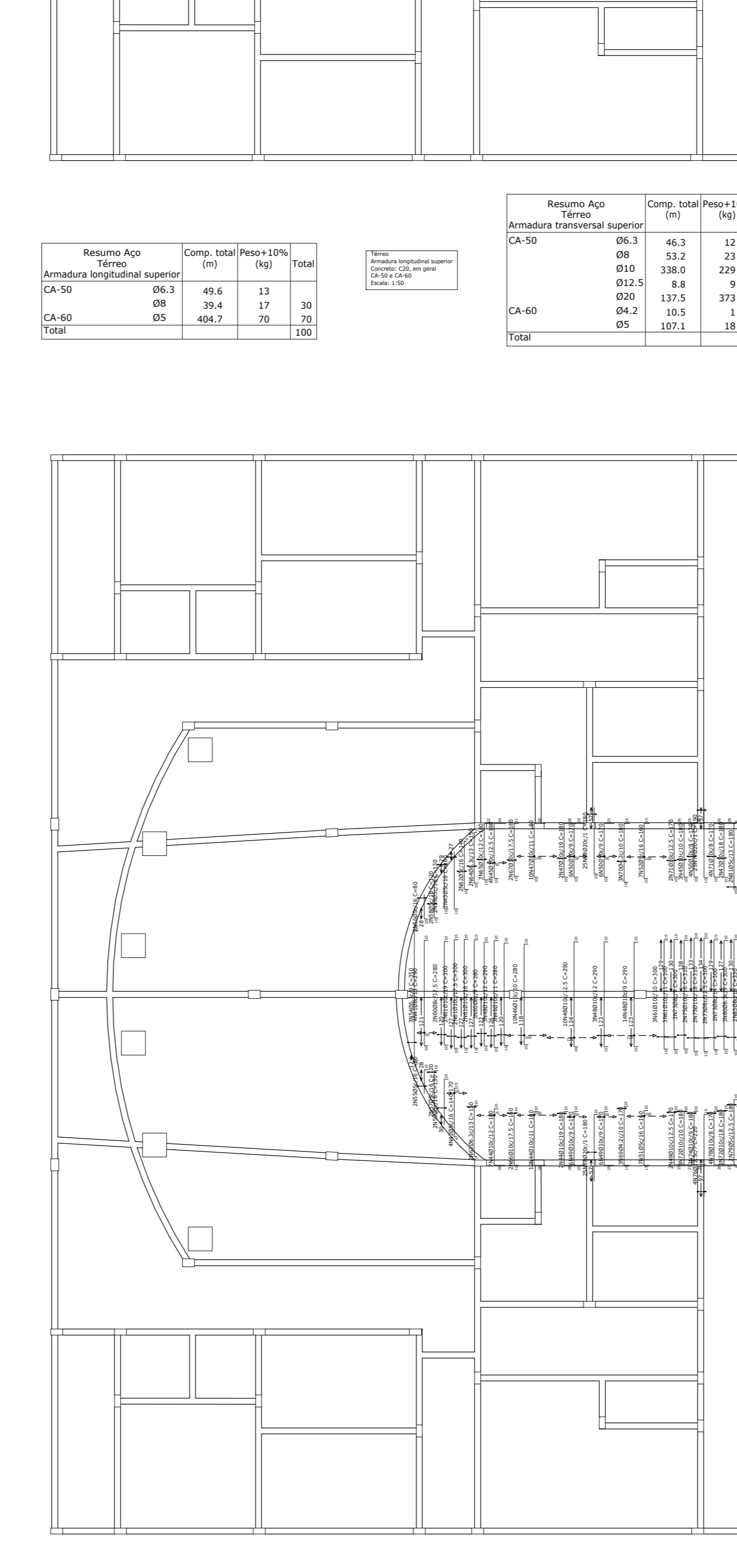
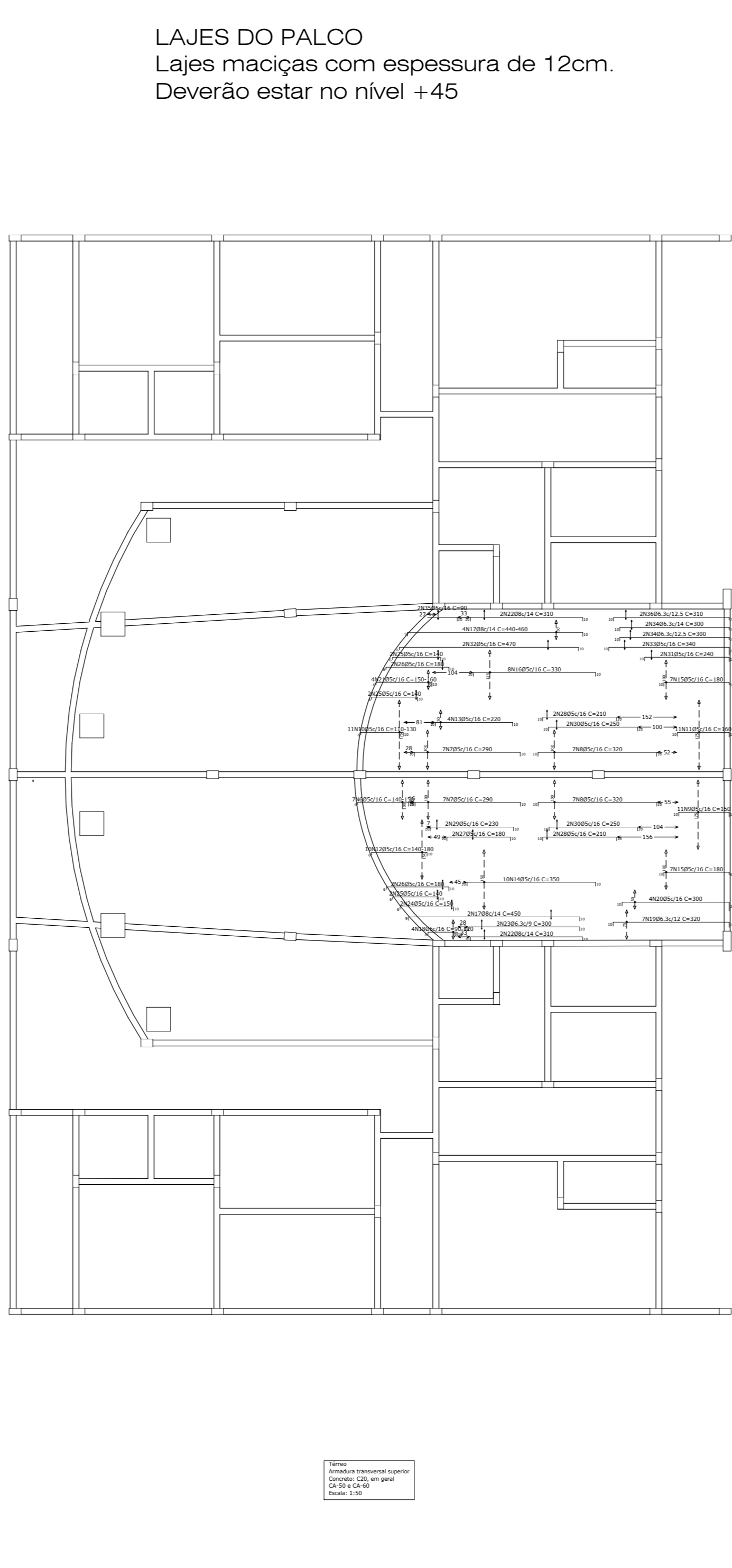
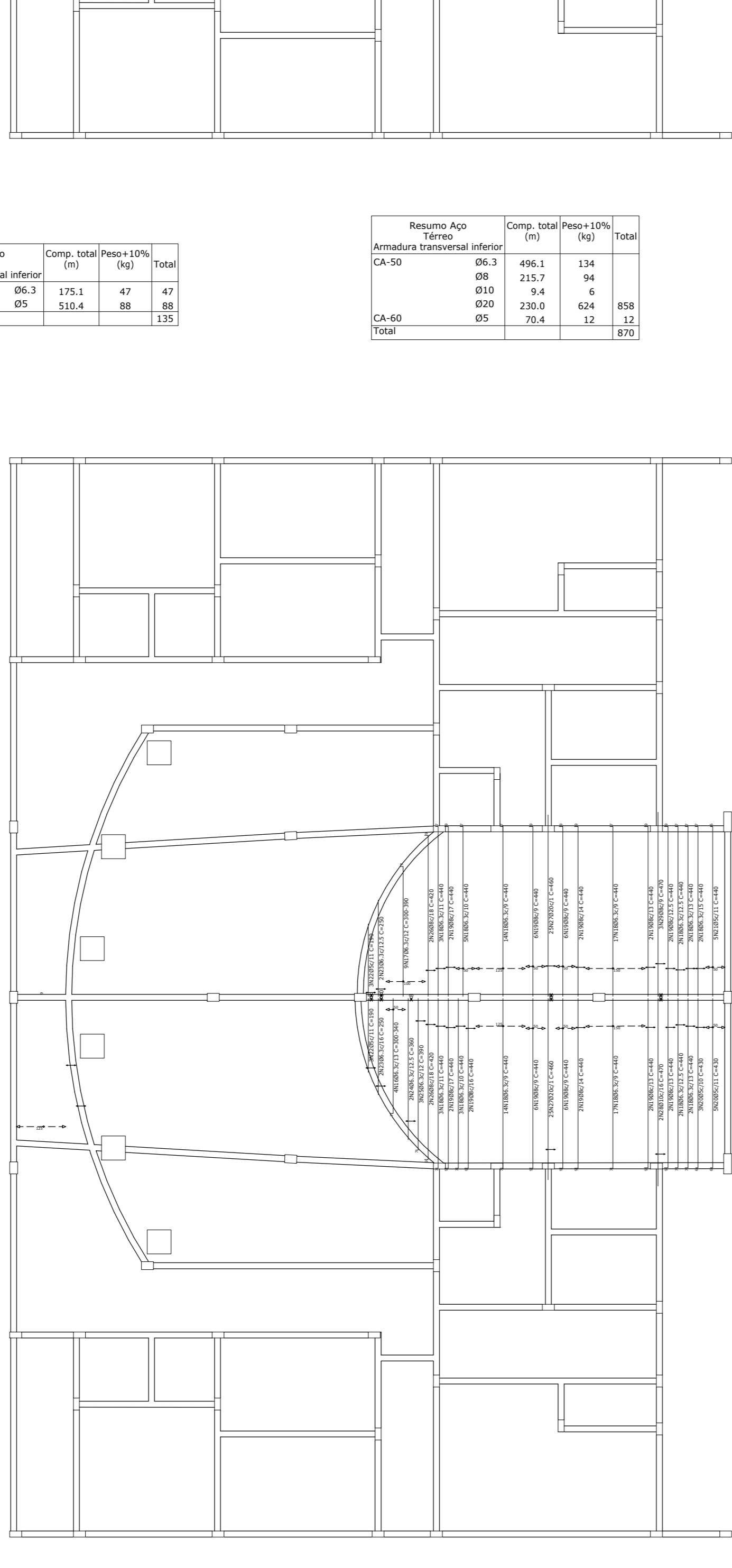
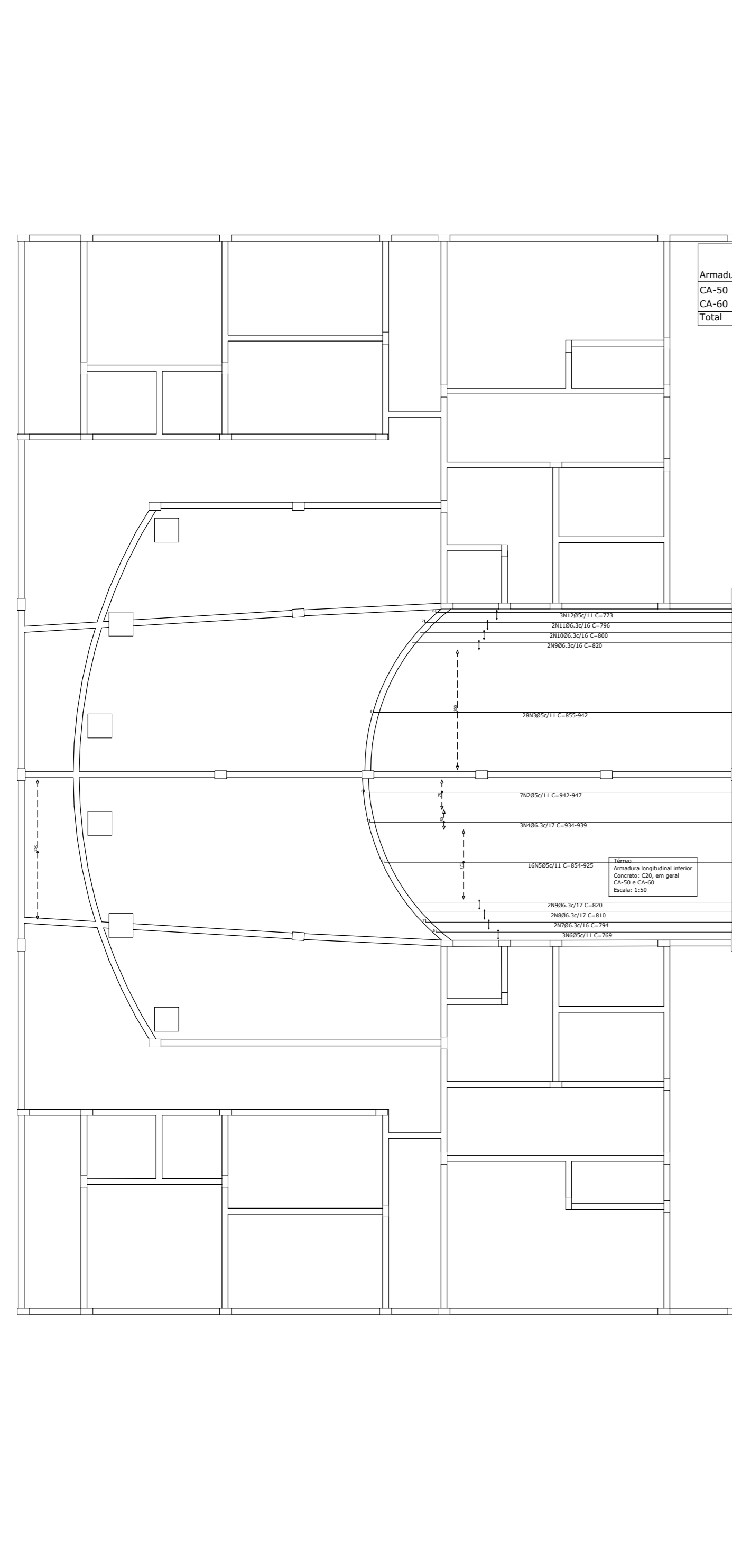


LAJES DA ARQUIBANCADA
Lajes maciças com espessura de 15cm - Nivel 0,00
Obs. Os elementos da arquibancada deverão ser construídos diretamente sobre a laje



Elemento	Pos.	Diam.	Q.	Dob.	Reta	Dob.	Comp.	Total	CA-50	CA-60
				(cm)	(cm)	(cm)	(m)	(kg)	(kg)	(kg)
Armadura longitudinal superior	1	05	6	9	171		180	1080		
	2	05	6	9	69		130	567		
	3	05	6	9	221		230	1020		
	4	05	6	9	221		230	1020		
	5	05	6	9	221		230	1020		
	6	05	6	9	221		230	1020		
	7	05	6	9	221		230	1020		
	8	05	6	9	221		230	1020		
	9	05	6	9	221		230	1020		
	10	05	6	9	221		230	1020		
	11	05	6	9	221		230	1020		
	12	05	6	9	221		230	1020		
	13	05	6	9	221		230	1020		
	14	05	6	9	221		230	1020		
	15	05	6	9	221		230	1020		
	16	05	6	9	221		230	1020		
	17	05	6	9	221		230	1020		
	18	05	6	9	221		230	1020		
	19	05	6	9	221		230	1020		
	20	05	6	9	221		230	1020		
	21	05	6	9	221		230	1020		
	22	05	6	9	221		230	1020		
	23	05	6	9	221		230	1020		
	24	05	6	9	221		230	1020		
	25	05	6	9	221		230	1020		
	26	05	6	9	221		230	1020		
	27	05	6	9	221		230	1020		
	28	05	6	9	221		230	1020		
	29	05	6	9	221		230	1020		
	30	05	6	9	221		230	1020		
	31	05	6	9	221		230	1020		
	32	05	6	9	221		230	1020		
	33	05	6	9	221		230	1020		
Total										



Elemento	Pos.	Diam.	Q.	Dob.	Reta	Dob.	Comp.	Total	CA-50	CA-60
				(cm)	(cm)	(cm)	(m)	(kg)	(kg)	(kg)
Armadura longitudinal inferior	1	06.3	27	3	VAR.	3	VAR.	5022	12.3	10.4
	2	05	7	6	VAR.	6	VAR.	6615	13.3	10.4
	3	05	28	6	VAR.	6	VAR.	25088		40.0
	4	06.3	3	7	VAR.	7	VAR.	2811	6.9	22.4
	5	05	16	6	VAR.	6	VAR.	14288		3.6
	6	05	16	6	VAR.	6	VAR.	709	2.007	
	7	06.3	2	7	780	7	794	1588	3.9	
	8	06.3	2	7	803	7	810	1520	4.0	
	9	06.3	4	7	813	820	3280	8.0		
	10	06.3	2	7	782	7	800	1600	3.9	
	11	06.3	2	7	782	7	796	1592	3.9	
	12	05	3	6	755	12	773	2319		3.6
Total									47.2	88.0
Armadura transversal superior	13	06.3	10	9	VAR.	9	VAR.	3970	9.7	0.4
	14	06.3	2	9	231	240	480	1.2		
	15	05	2	9	121	130	260			
	16	06.3	4	7	VAR.	VAR.	1280	3.1		
	17	06.3	9	7	VAR.	VAR.	3150	7.7		
	18	06.3	86	7	433	440	37840	92.7		
	19	08	42	9	431	440	18480	73.0		
	20	05	8	6	424	430	3440			
	21	05	5	6	434	440	2200			
	22	05	6	6	150	150	1140			
	23	06.3	4	250	250	1000				
	24	06.3	2	360	360	720	2.4			
	25	06.3	2	7	383	390	1170	2.8		
	26	08	2	9	411	420	1680	5.6		
	27	020	2	460	460	2300	567.3			
	28	010	2	470	470	940	5.8			
	29	08	3	470	470	1410	5.6			
Total								857.8	12.2	0.4
	OS:	0.0						100.2		
	06.3:	180.9						0.6		
	08:	93.7						0.0		
	010:	6.4						0.0		
	020:	624.0						0.0		
Total:								995.0	100.2	