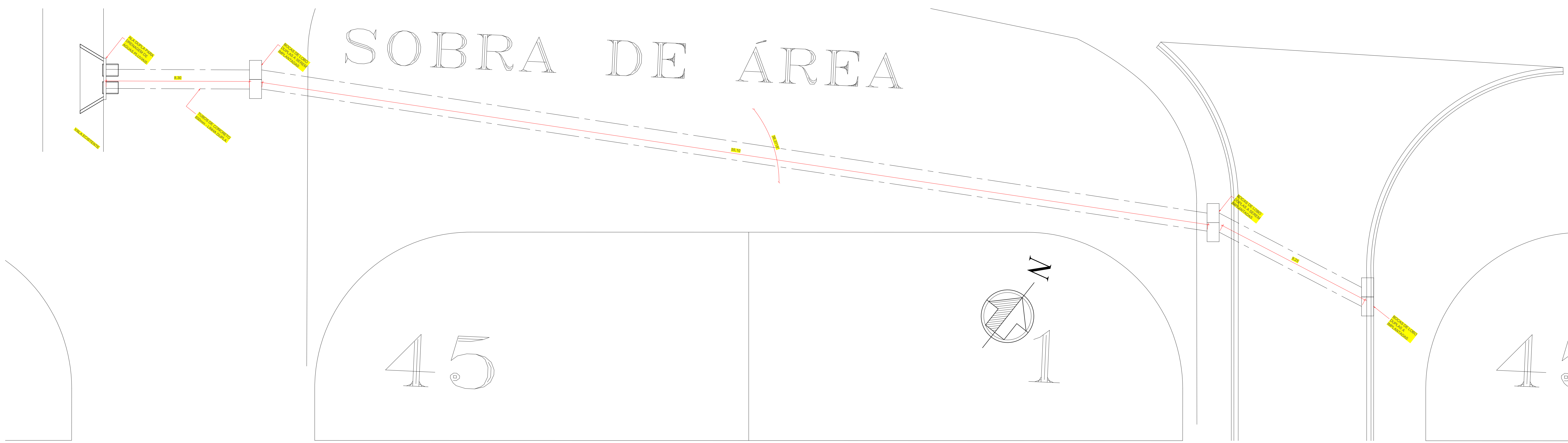
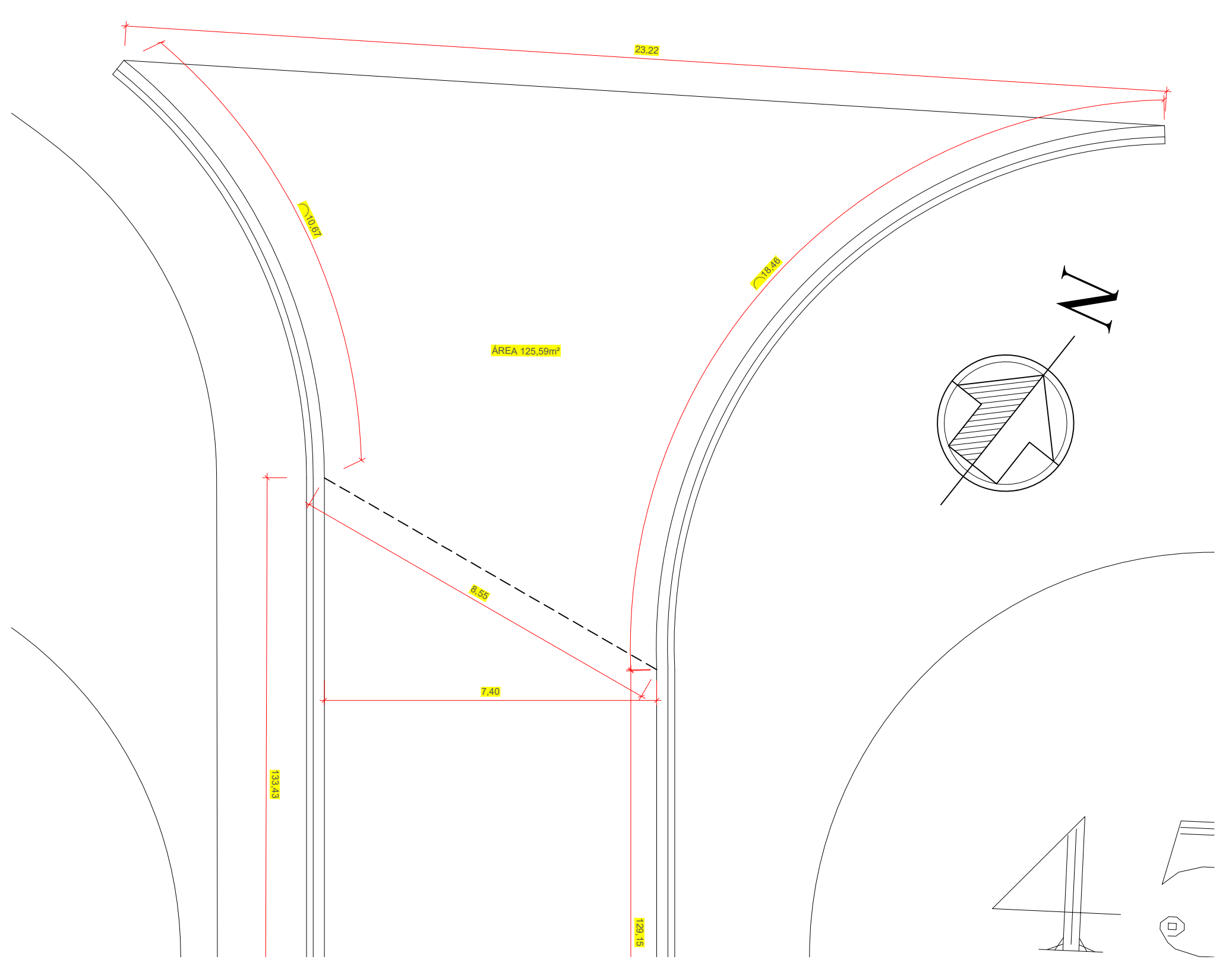


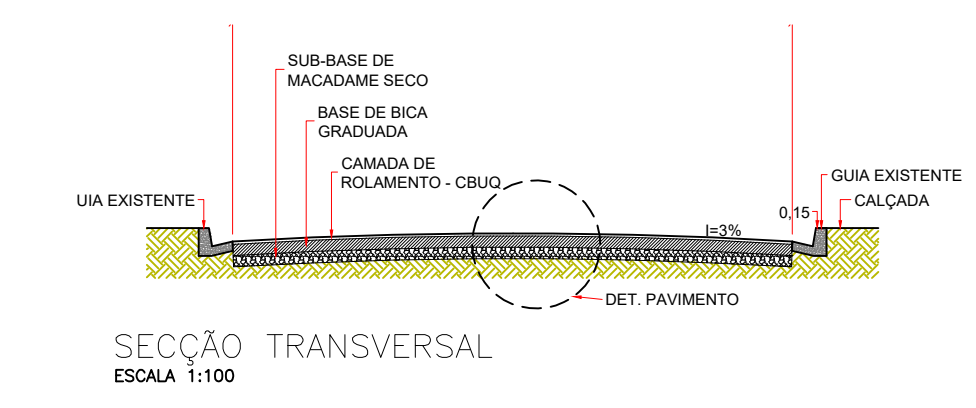
SOBRA DE ÁREA



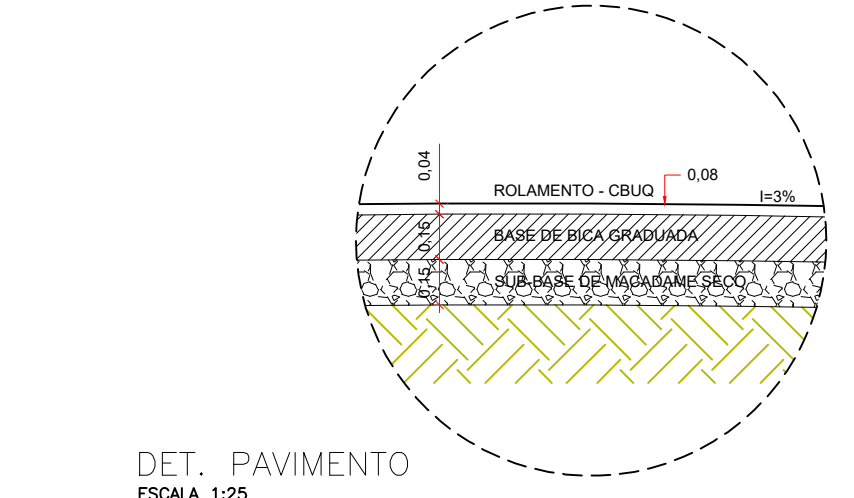
IMPLANTAÇÃO DA DRENAGEM
ESCALA 1:100



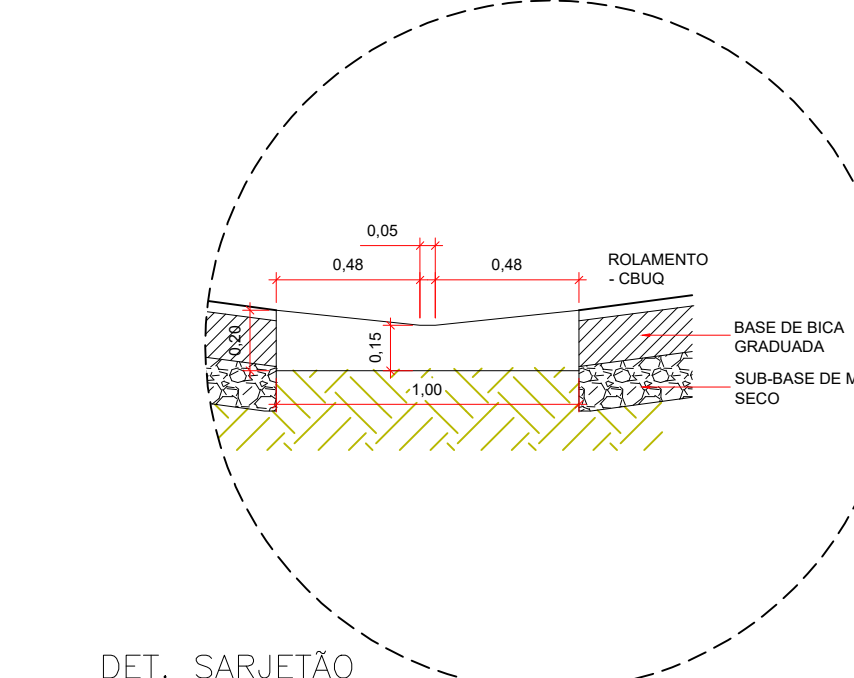
DETALHE DA EMBOCADURA
ESCALA 1:100



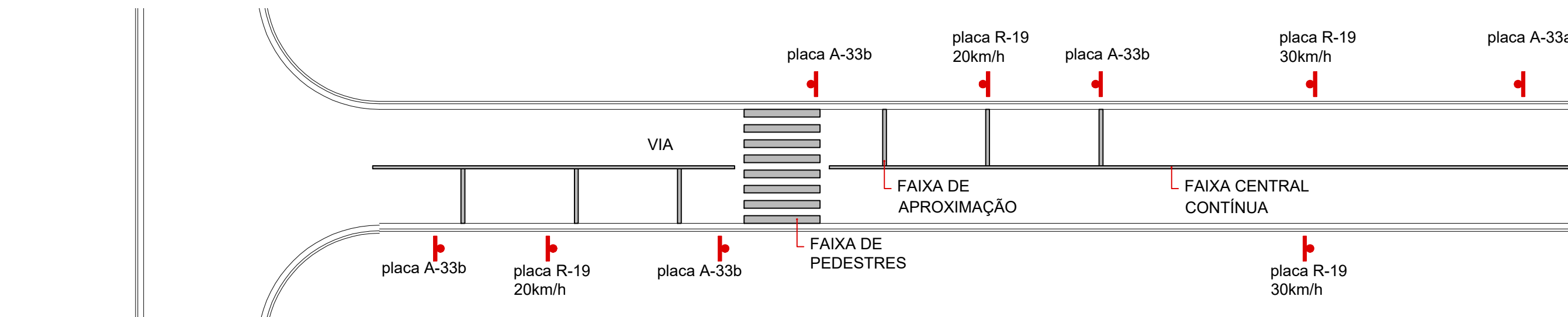
SEÇÃO TRANSVERSAL
ESCALA 1:100



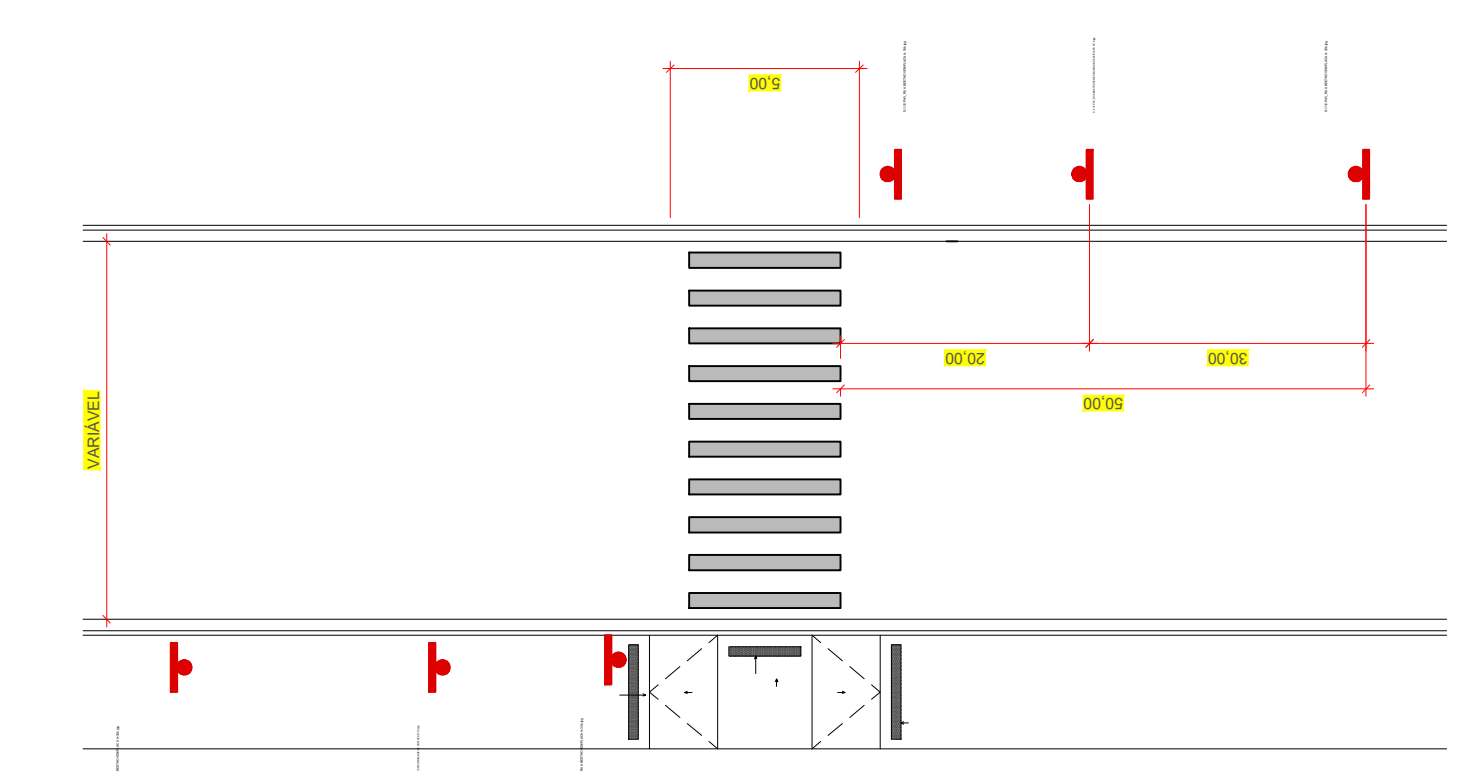
DET. PAVIMENTO
ESCALA 1:25



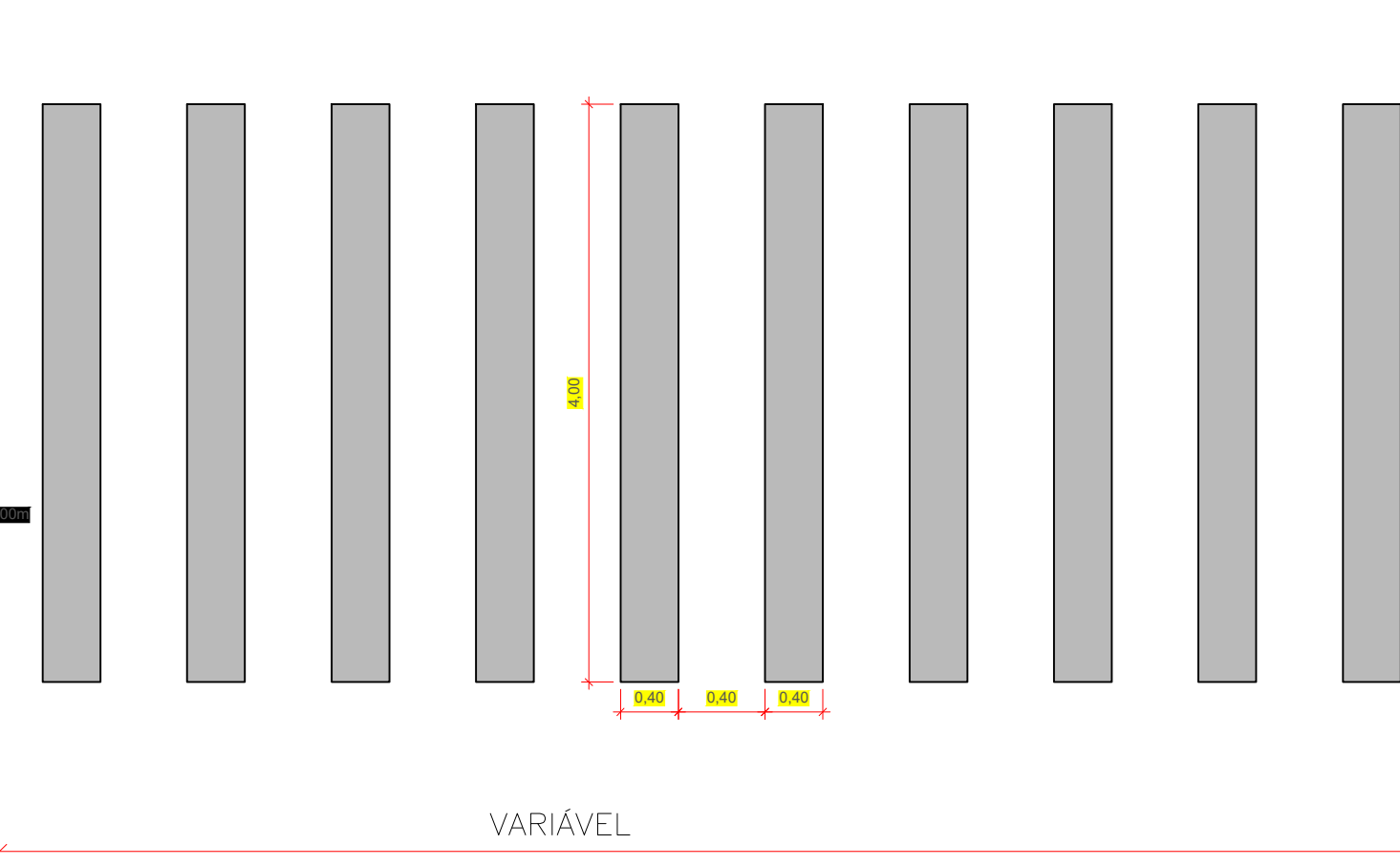
DET. SARJETÃO
ESCALA 1:25



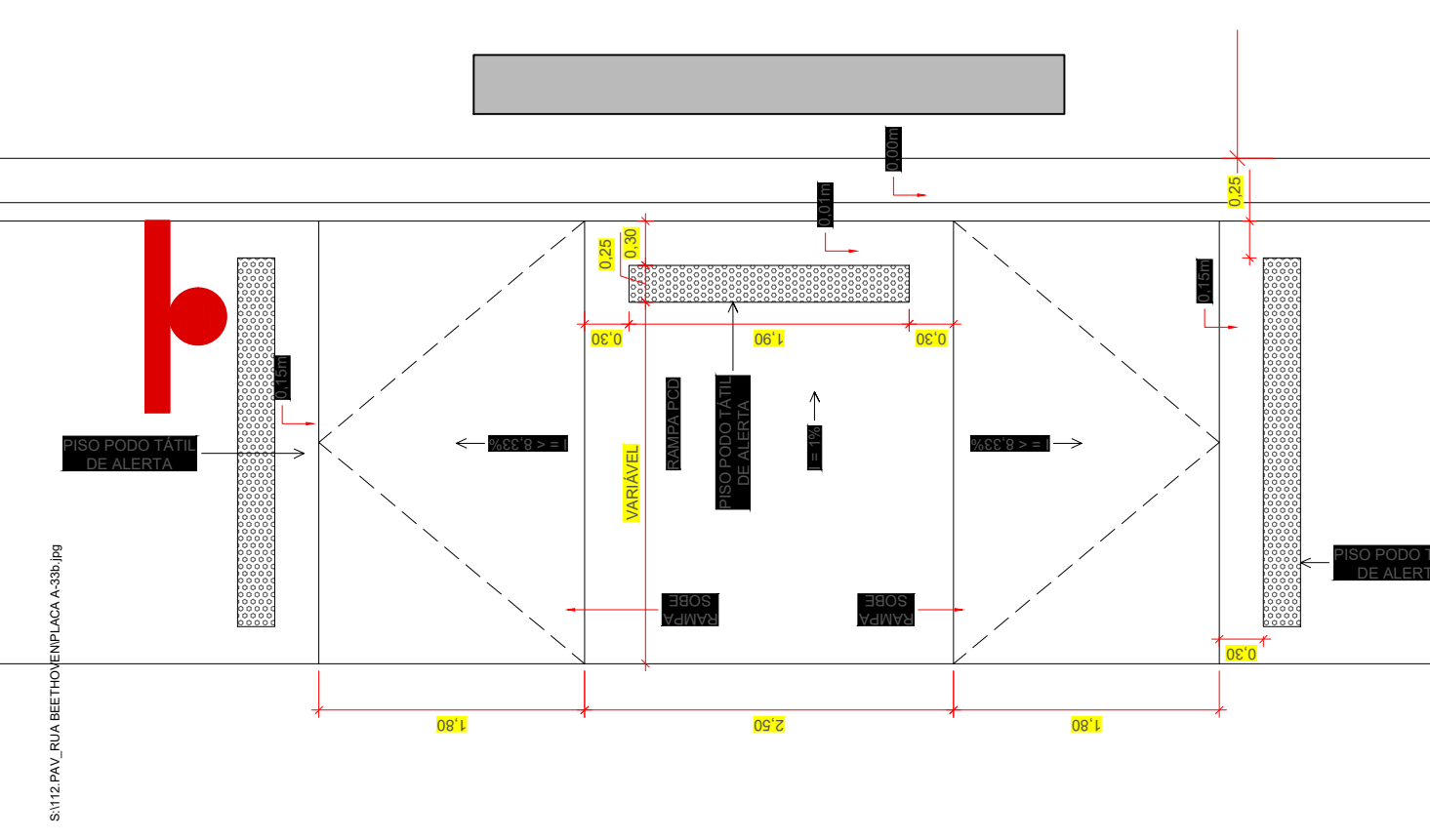
ESQUEMA DA SINALIZAÇÃO DA VIA
10x ESCALA



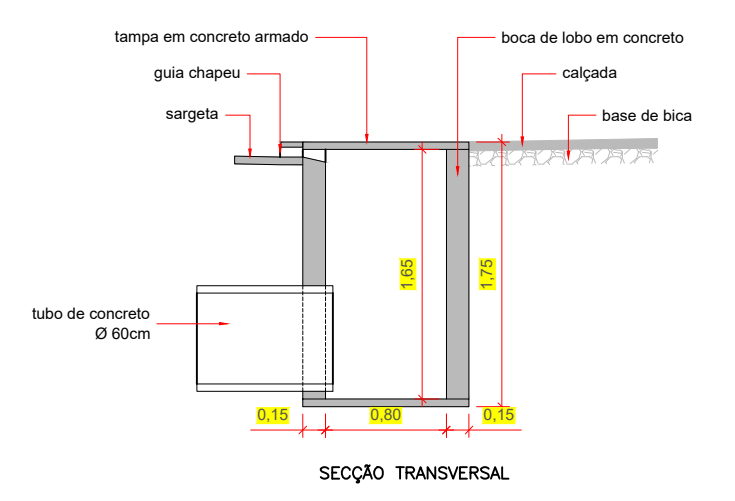
DET. TRAVESSIA DE PEDESTRES
ESCALA 1:200



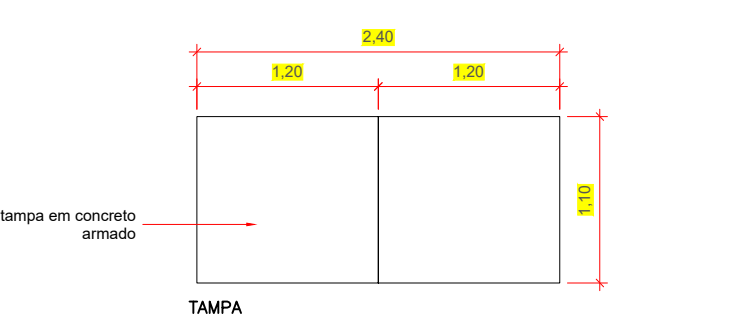
DETALHE - FAIXA DE PEDESTRES
ESCALA 1:50



DETALHE - RAMP A PC
ESCALA 1:25

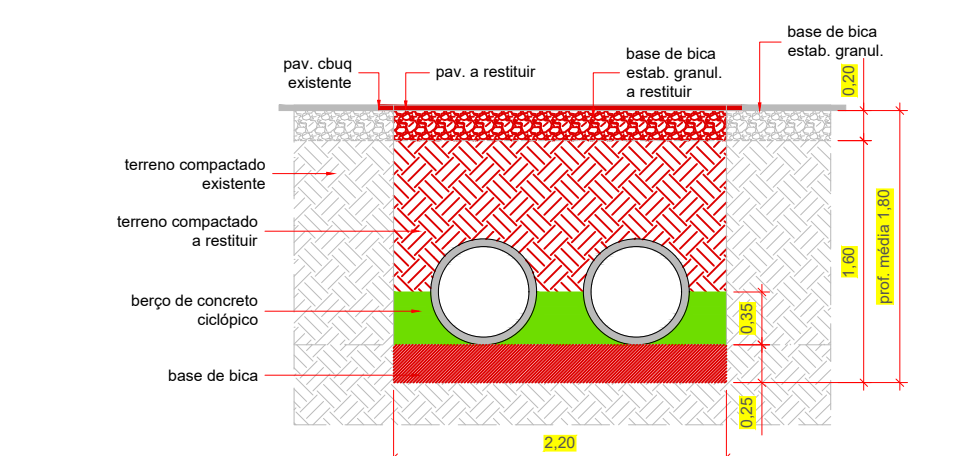


SEÇÃO TRANSVERSAL

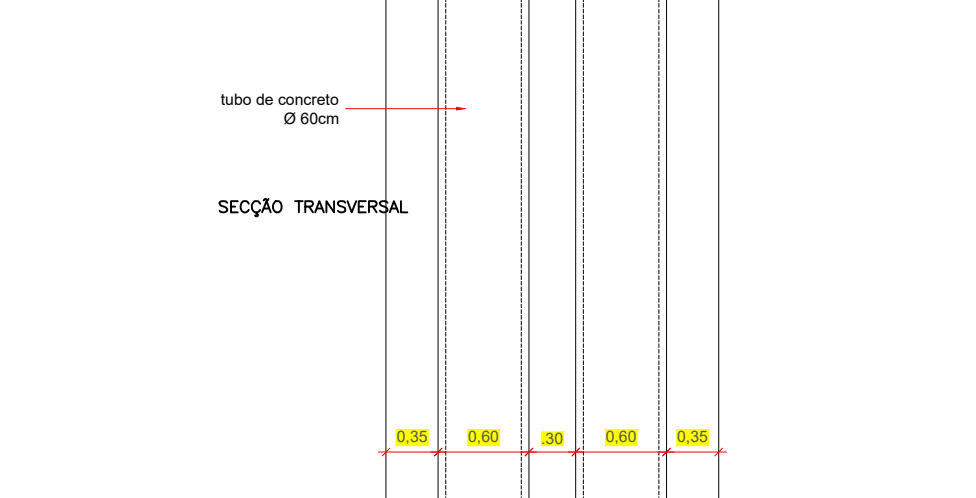


TAMPA

DETALHE - BOCA DE LOBO DUPLA
ESCALA 1:50

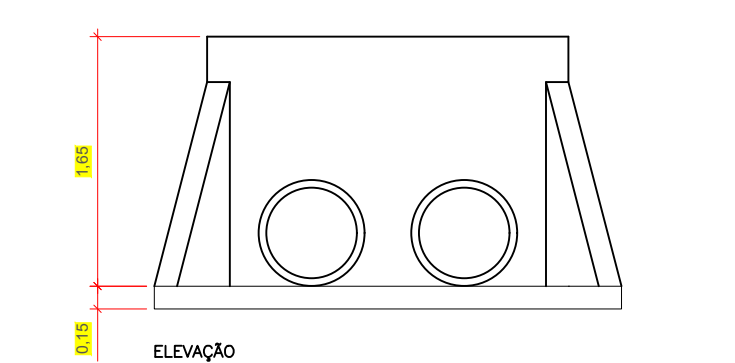


SEÇÃO TRANSVERSAL



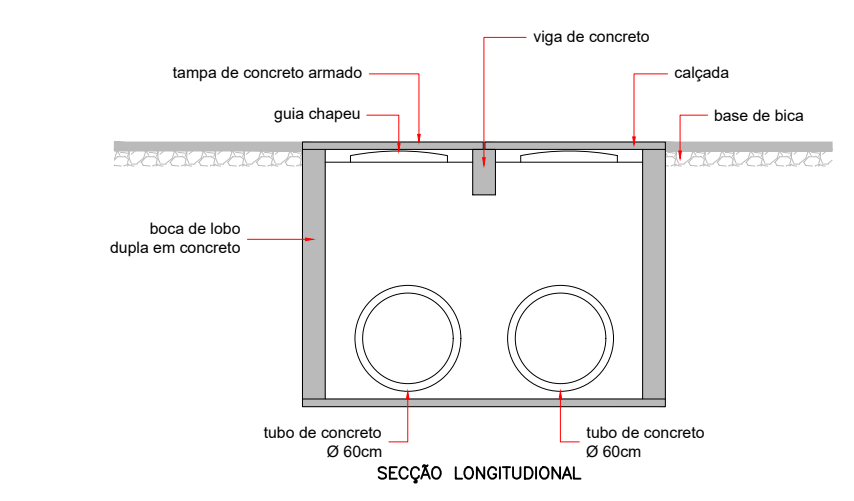
IMPLANTAÇÃO

DETALHE - IMPLANTAÇÃO DETUBOS
ESCALA 1:50

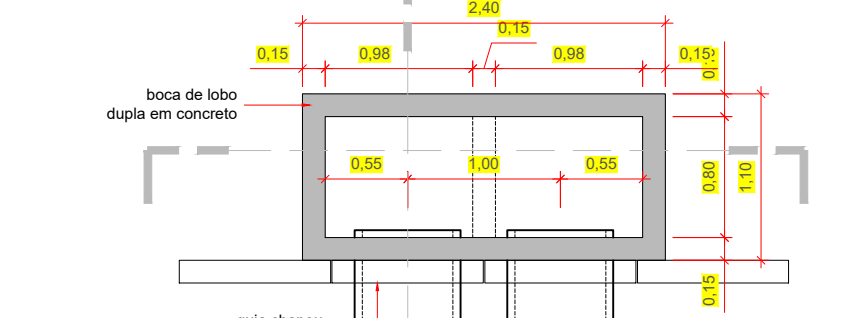


ELEVÇÃO

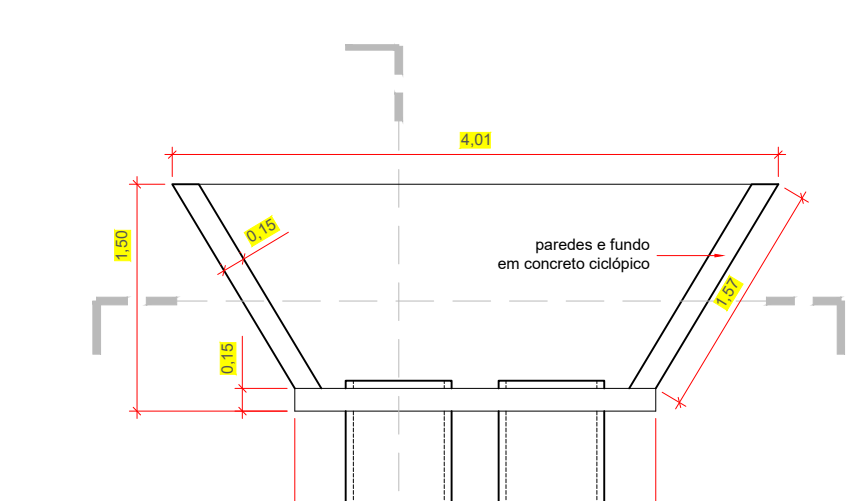
DETALHE - ALA
ESCALA 1:50



SEÇÃO LONGITUDINAL



SEÇÃO LONGITUDINAL



ELEVÇÃO

Nº	DATA	REVISÃO	RESPONSÁVEL
00	SET/19	REVISÃO 00	Jefferson Marcelo
01	ABR/2020	REVISÃO 01	Jefferson Marcelo

PROJETADO POR: CAROLINE VAZ RODRIGUES		PREFEITURA MUNICIPAL DE ILHA COMPRIDA ESTÂNCIA BALNEÁRIA AVENIDA BEIRA MAR 11000 - CEP 11925-000	
DES: JEFFERSON MARCELO PROJ: CAROLINE VAZ RODRIGUES ASS: CAROLINE VAZ RODRIGUES	DATA: MAIO/2021	DESE: PAVIMENTAÇÃO ASFÁLTICA DA RUA BEETHOVEN, TRECHO LINDERO A ESCOLA ESTADUAL JUDITH SANAYANNA DIEGUES ASSUNTO: SEÇÕES TRANSVERSAIS, DRENAGEM E DETALHES	Nº DES: 02/02 REV: 01 ESCALA: INDICADAS