

MASSA ESPECÍFICA		
CLASSE	BITOLA (Ø)	Kg/Km
CA-60	5,0mm	0,154
CA-50	12,5mm	0,963

TIPO	BITOLA (Ø)	MASSA (Kg/Km)	C= (cm)	QTD (um)	MASSA TOTAL (kg)
N10	12,50	0,963	205,00	63	12437,15
N11	12,50	0,963	185,00	84	14965,02
N12	12,50	0,963	205,00	117	23097,56
N13	12,50	0,963	185,00	143	25476,17
N14	12,50	0,963	235,00	45	10183,73
N15	12,50	0,963	215,00	55	11387,48
N21	5,00	0,154	126,00	198	3841,99
N22	5,00	0,154	126,00	72	1397,09
N23	12,50	0,963	225,00	116	25134,3
N24	12,50	0,963	195,00	128	24036,48
TOTAL					151956,97

FORMAS DAS SAPATAS

STIPO	Nk	L (m)	C (m)	H (m)	Aun. (m²)	QTDs	Atot (m²)	PONTO
S1	10#	1,55	1,85	0,575	5,23	8,00	41,84	S201, S202, S203, S204, S205, S206, E S208
S2	10#	1,55	1,75	0,575	5,11	13,00	66,43	S101, S102, S103, S104, S105, S107, S108, S112, S114, S115, S116, S117 E S118
S3	15#	1,85	2,05	0,575	6,06	5,00	30,30	S106, S109, S110, S111 E S113
ÁREA TOTAL DE FORMAS					138,57			

FORMAS ARRANQUES

STIPO	Nk	L (m)	C (m)	H (m)	Aun. (m²)	QTDs	Atot (m²)	PONTO
S1	10#	0,70	0,40	1,180	2,34	8,00	18,72	S201, S202, S203, S204, S205, S206, E S208
S2	10#	0,50	0,30	1,240	1,74	13,00	22,62	S101, S102, S103, S104, S105, S107, S108, S112, S114, S115, S116, S117 E S118
S3	15#	0,50	0,30	1,240	1,74	5,00	8,70	S106, S109, S110, S111 E S113
ÁREA TOTAL DE FORMAS					50,04			

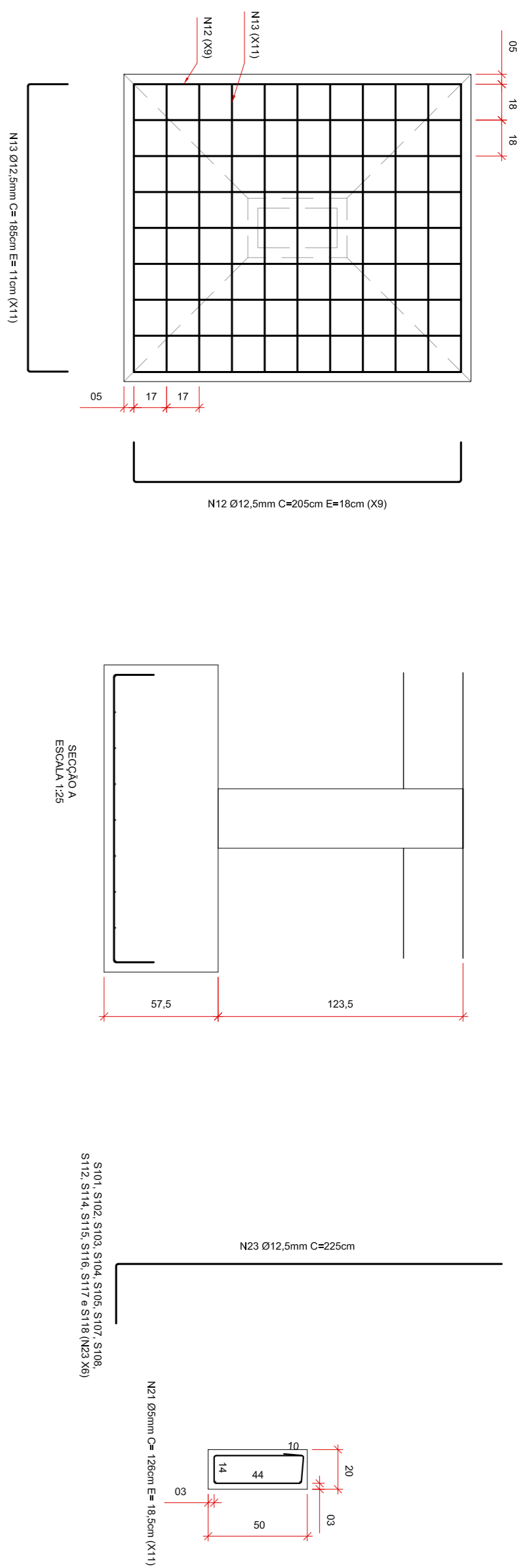
VOLUME DE CONCRETO SAPATAS (m³)

STIPO	Nk	L (m)	C (m)	H (m)	Vun. (m³)	QTDs	Vtot (m³)	PONTO
S1	10#	1,55	1,85	0,575	1,65	8,00	13,20	S201, S202, S203, S204, S205, S206, E S208
S2	10#	1,55	1,75	0,575	1,56	13,00	20,28	S101, S102, S103, S104, S105, S107, S108, S112, S114, S115, S116, S117 E S118
S3	15#	1,85	2,05	0,575	2,18	5,00	10,90	S106, S109, S110, S111 E S113
ÁREA TOTAL DE FORMAS					44,38			

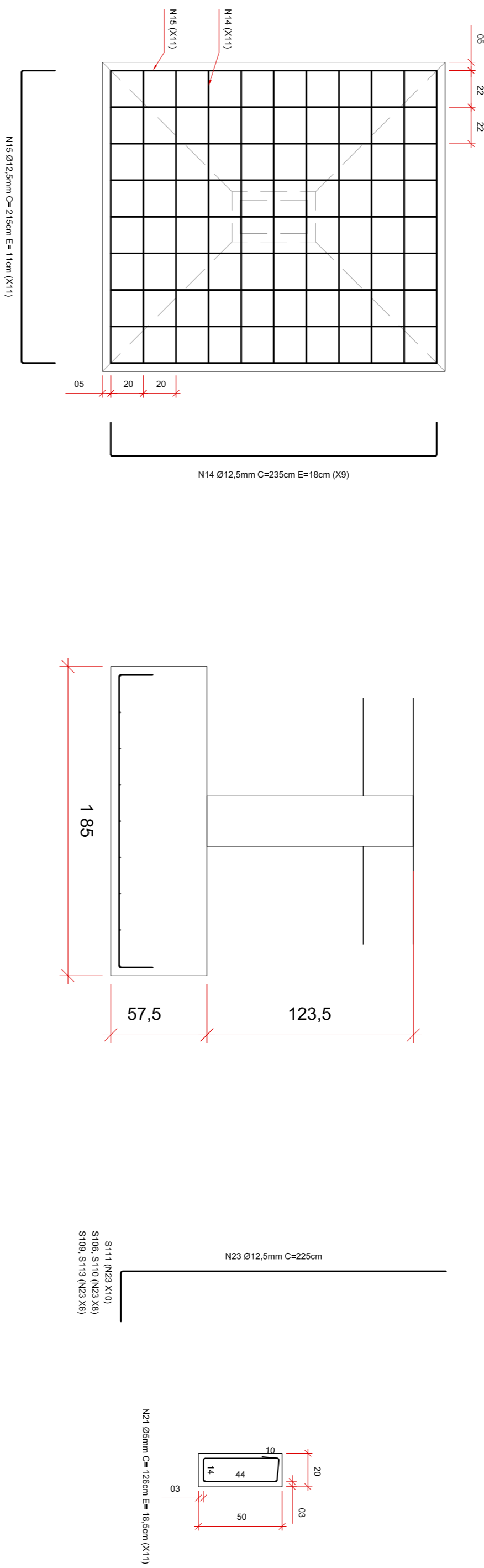
VOLUME DE CONCRETO ARRANQUES (m³)

STIPO	Nk	L (m)	C (m)	H (m)	Vun. (m³)	QTDs	Vtot (m³)	PONTO
S1	10#	0,70	0,40	1,180	0,33	8,00	2,64	S201, S202, S203, S204, S205, S206, E S208
S2	10#	0,50	0,30	1,240	0,19	13,00	2,47	S101, S102, S103, S104, S105, S107, S108, S112, S114, S115, S116, S117 E S118
S3	15#	0,50	0,30	1,240	0,19	5,00	0,95	S106, S109, S110, S111 E S113
ÁREA TOTAL DE FORMAS					6,06			

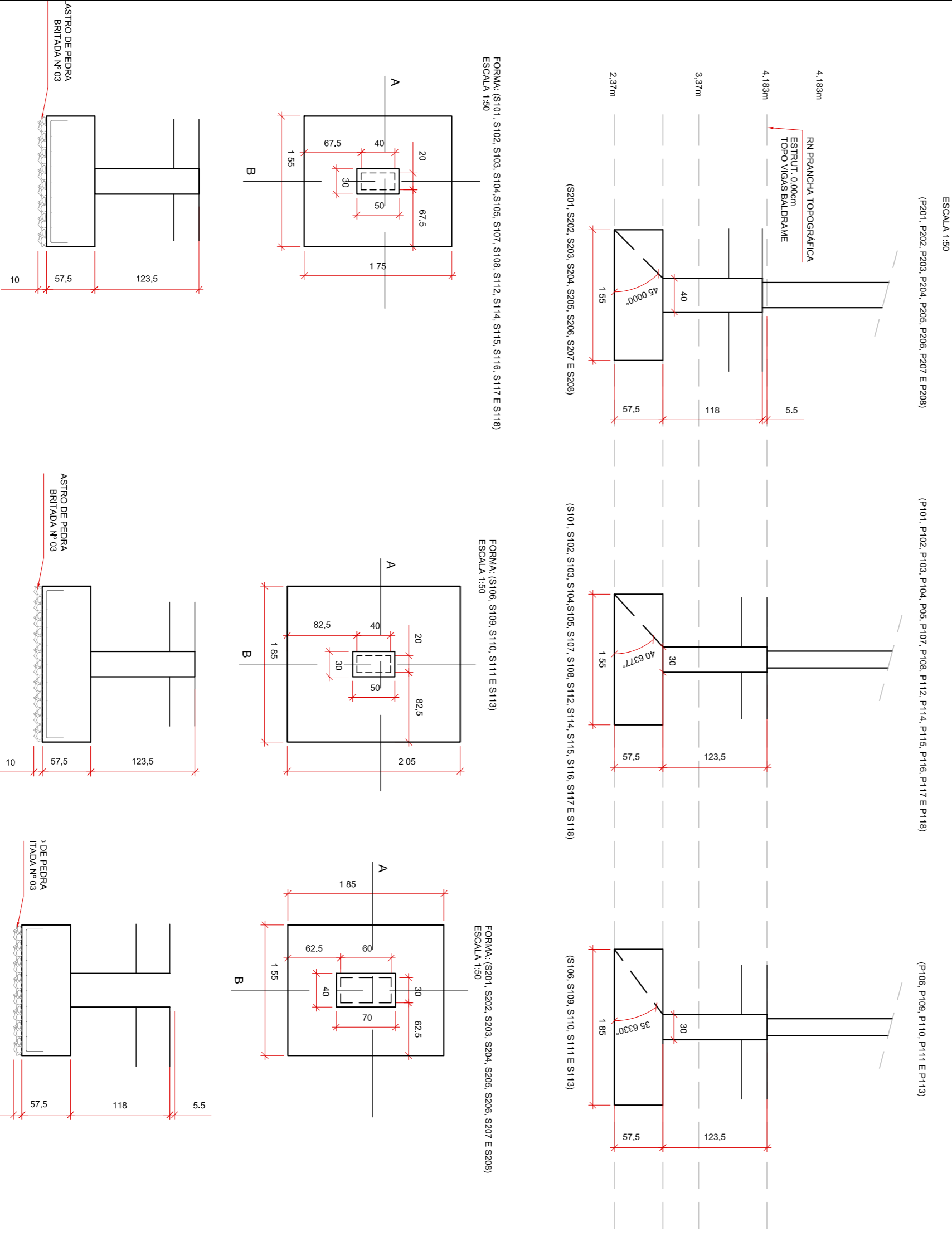
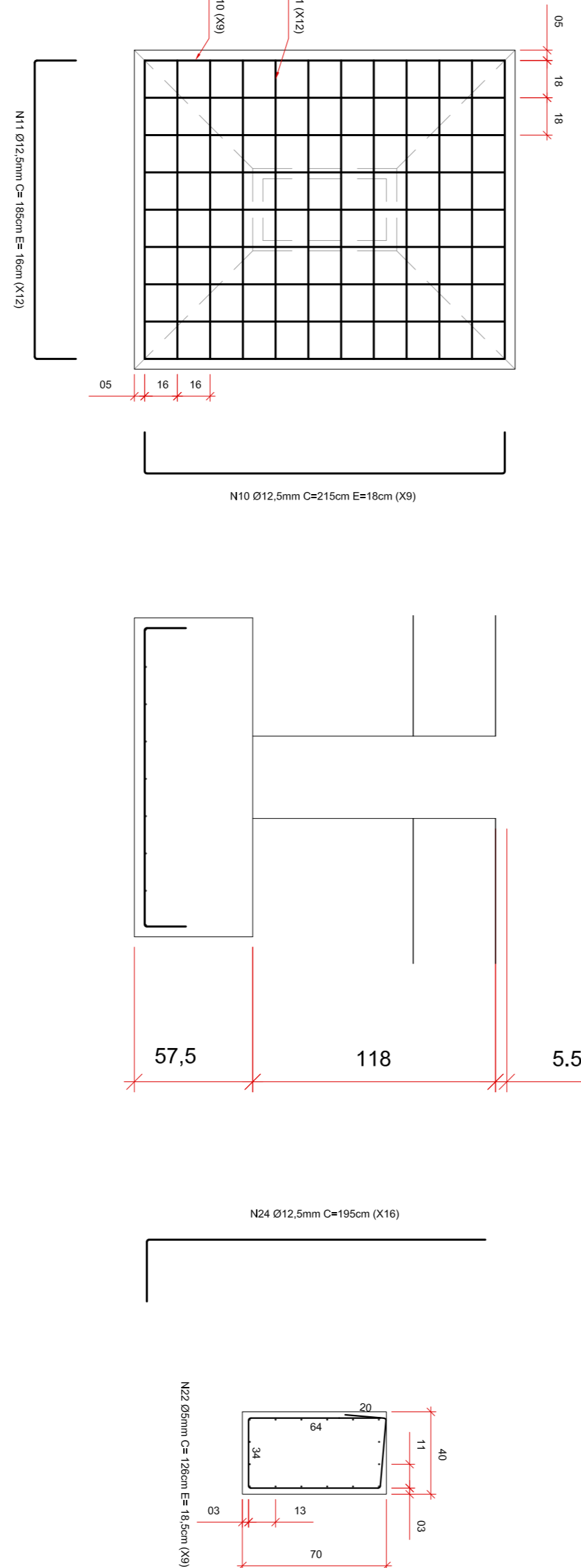
DETALHE DO AÇO: (S101, S102, S103, S104, S105, S107, S108, S112, S114, S115, S116, S117 E S118)
ESCALA 1:25



DETALHE DO AÇO: (S106, S109, S110, S111 E S113)
ESCALA 1:25



DETALHE DO AÇO: (S201, S202, S203, S204, S205, S206, S 207 E S208)
ESCALA 1:25



Nº	DATA	REVISÃO	RESPONSÁVEL	NOTE-SE:
00	SET/23	REVISÃO 00	Jefferson Marcelo	
PROJETADO POR: CAROLINE VAZ RODRIGUES				
PROJETO - LOCAÇÃO DAS SAPATAS				
PREFEITURA MUNICIPAL DE ILHA COMPRIDA ESTANÇIA BALNEÁRIA AVENIDA BERRA MAR 11000 - CEP 11925-000				
PROJETO - LOCAÇÃO DAS SAPATAS				
02/02				
INDICADAS				