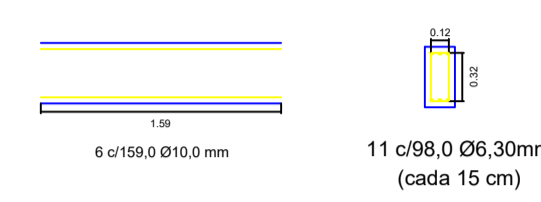
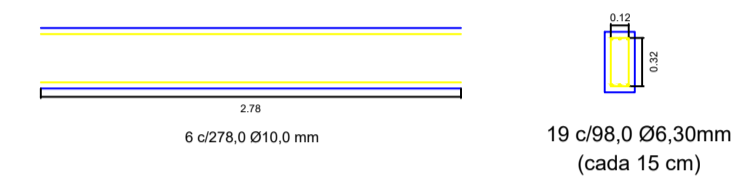


VIGAS

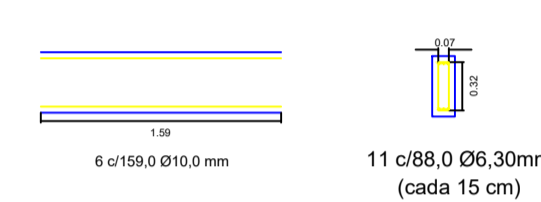
VGH1



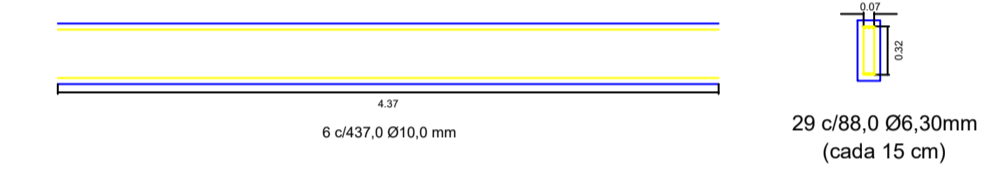
VGH2



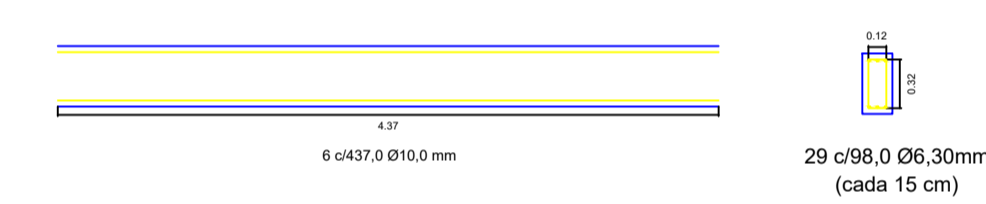
VGH4, VGH7 (2x)



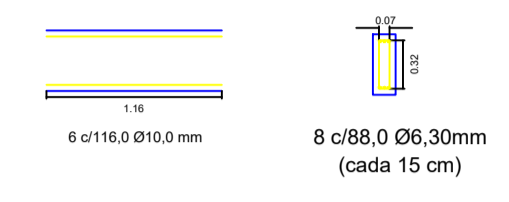
VGH9 (2x), VGH10 (2x), VGH11 (2x), VGH12



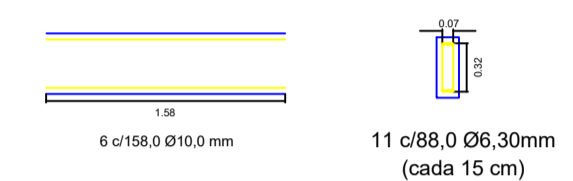
VGH13



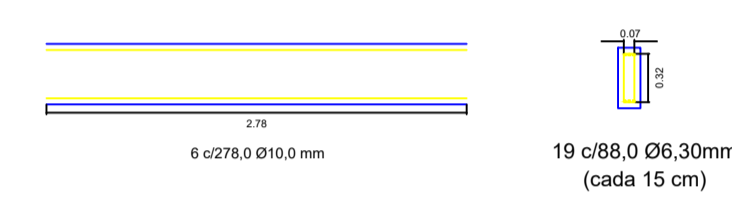
VGH3, VGH6



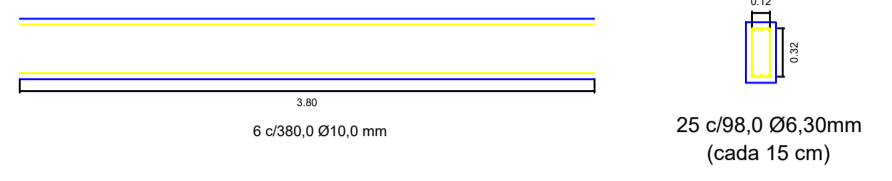
VGH5



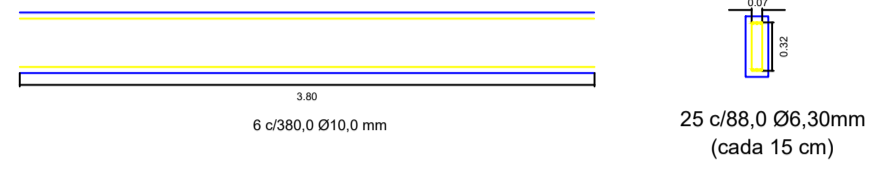
VGH8 (2x)



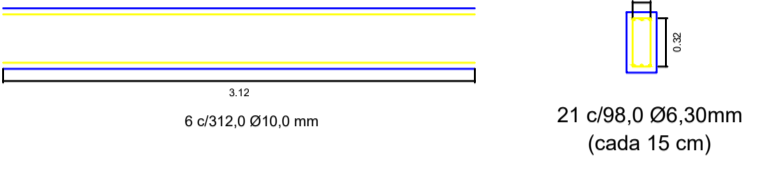
VG1, VG5



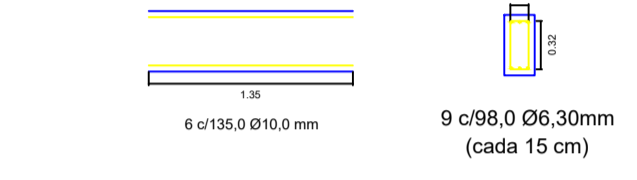
VG2, VG6



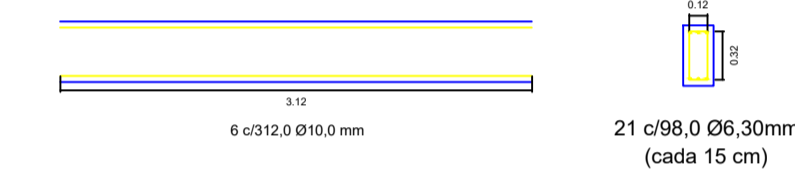
VG3



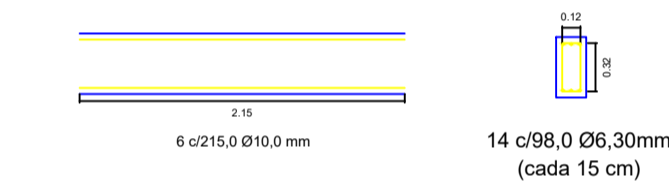
VG4 (2x)



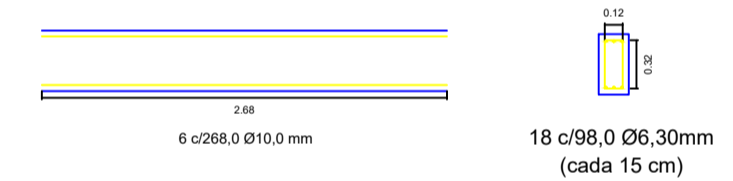
VG7



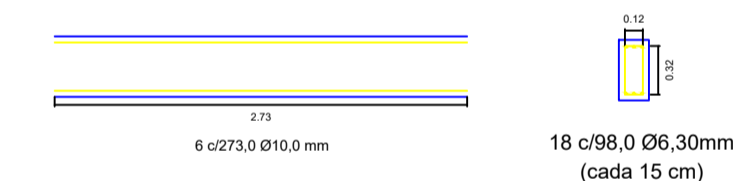
VG8, VG9



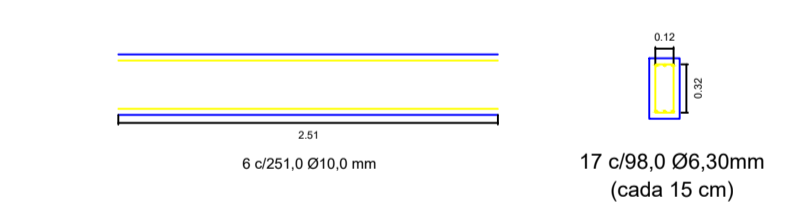
VG10a (2x), VG10b (2x)



VG11 (2x), VG12 (2x)

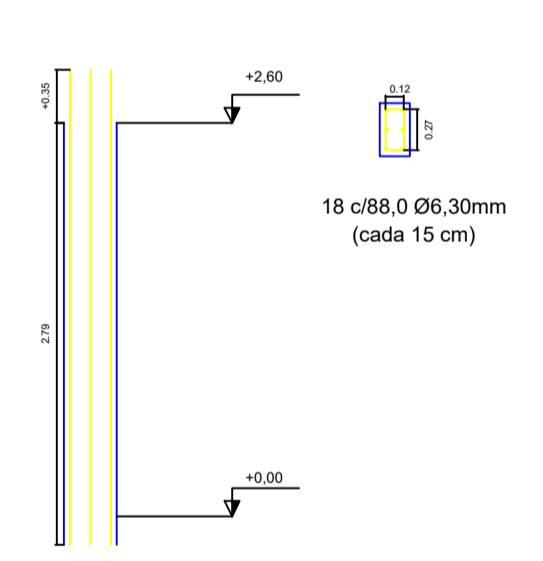


VG13, VG14, VG15, VG16

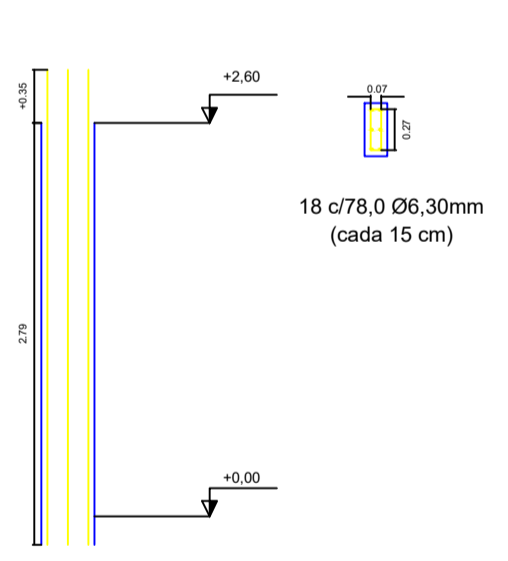


PILARES

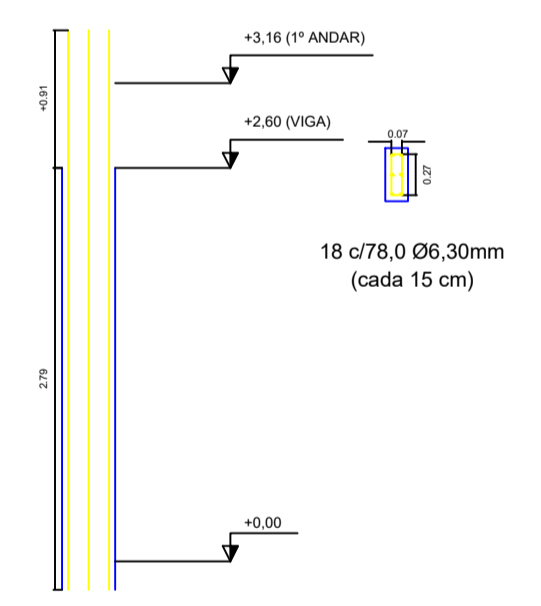
P1 ao P3, P22, P23



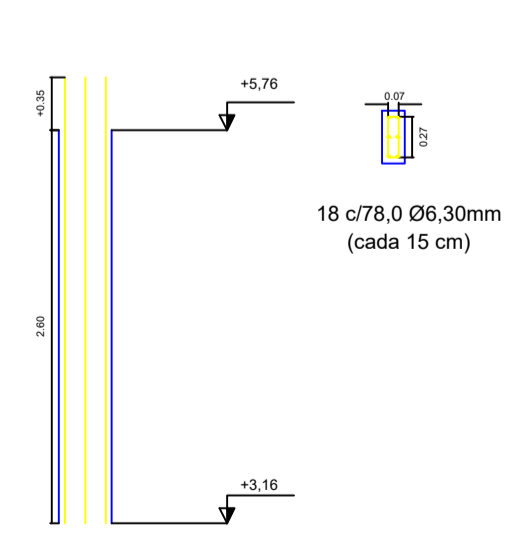
P4 ao P10, P20, P21



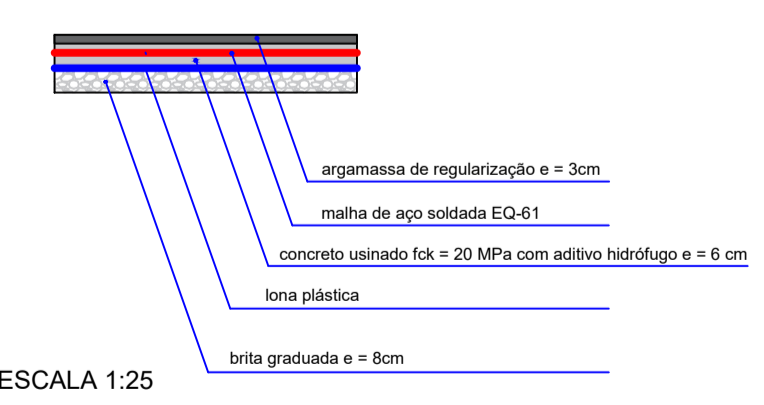
P11 ao P19



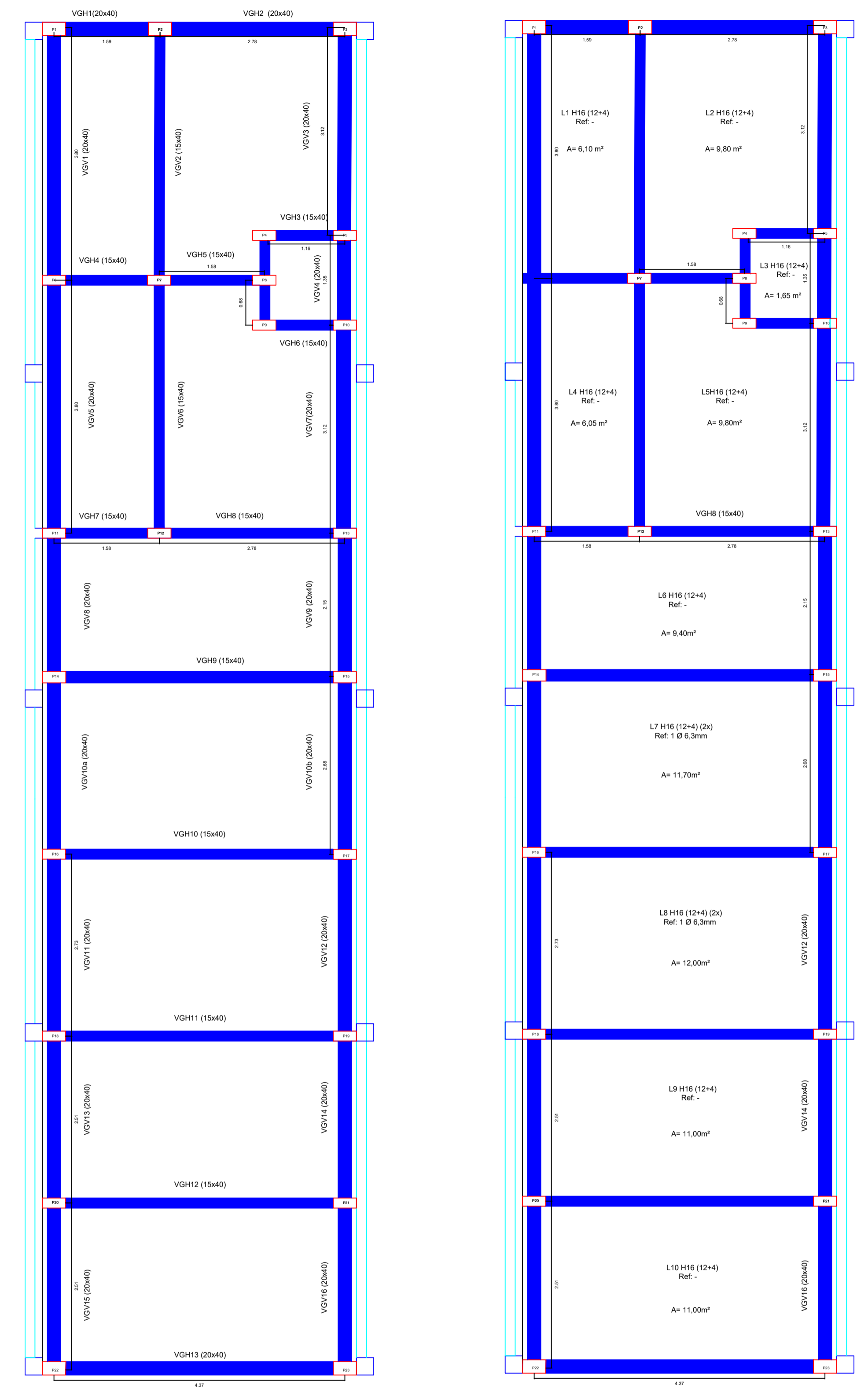
P11.1 ao P19.1



PISO



ESCALA 1:25



PROJETADO POR: GUSTAVO DE OLIVEIRA REZENDE		PREFEITURA MUNICIPAL DE ILHA COMPRIDA ESTÂNCIA BALNEÁRIA AVENIDA BEIRA MAR 11000 - CEP 11925-000		
DES:	JULHO/2022	OBRA: FECHAMENTO DA QUADRA DA ESCOLA MEU RECANTO		Nº DES:
PROJ:	JULHO/2022	ENDEREÇO: RUA IGUAPE, BALNEÁRIO MEU RECANTO		ARG: 001.001
RESP. TECN.:	CREA: 50700323-08	ASSUNTO: PROJETO ESTRUTURAL EDIFICAÇÃO		REV: 01
ASS.:	SRIT:	JULHO/2022		ESCALA: 1:50