

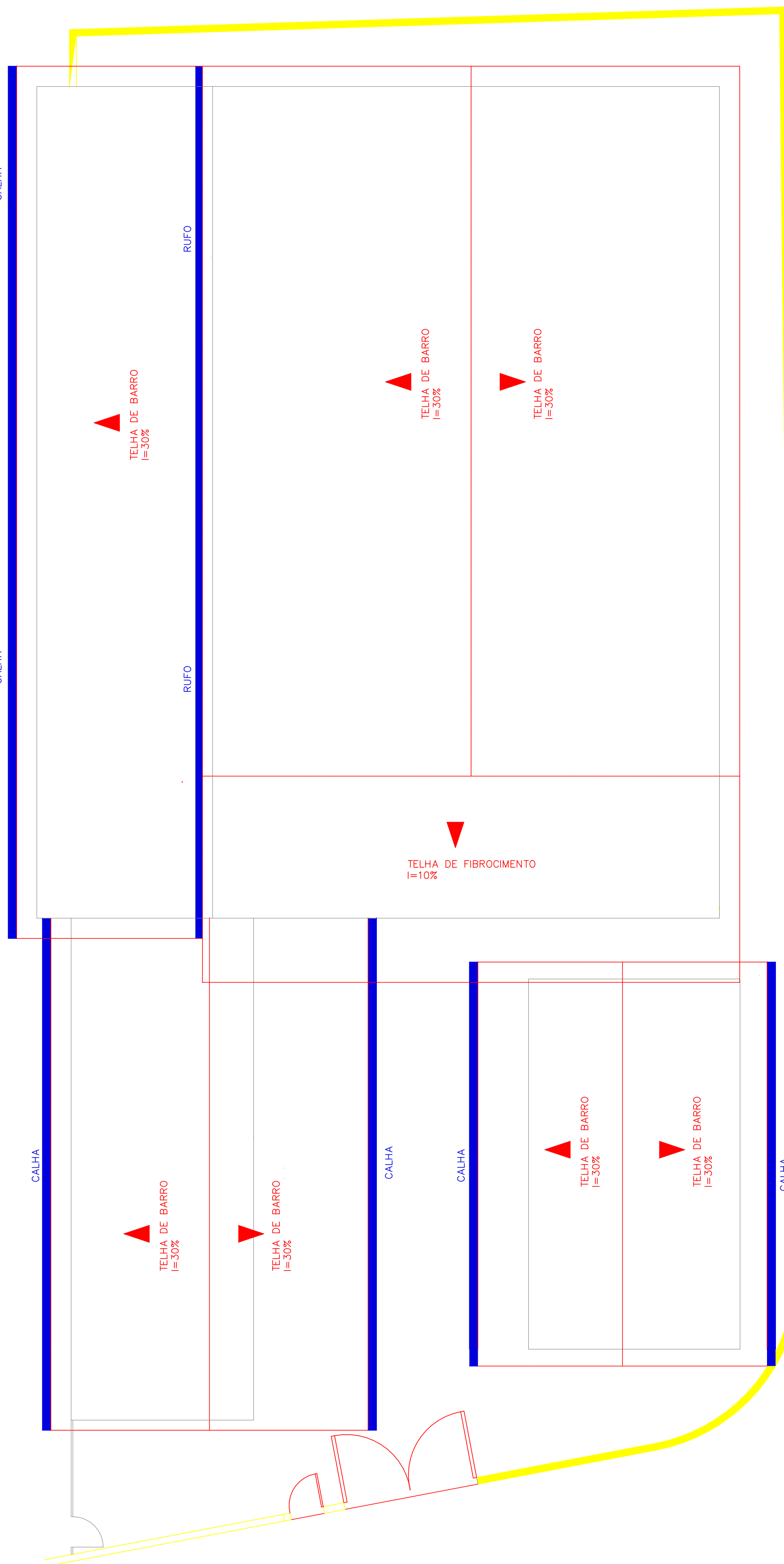




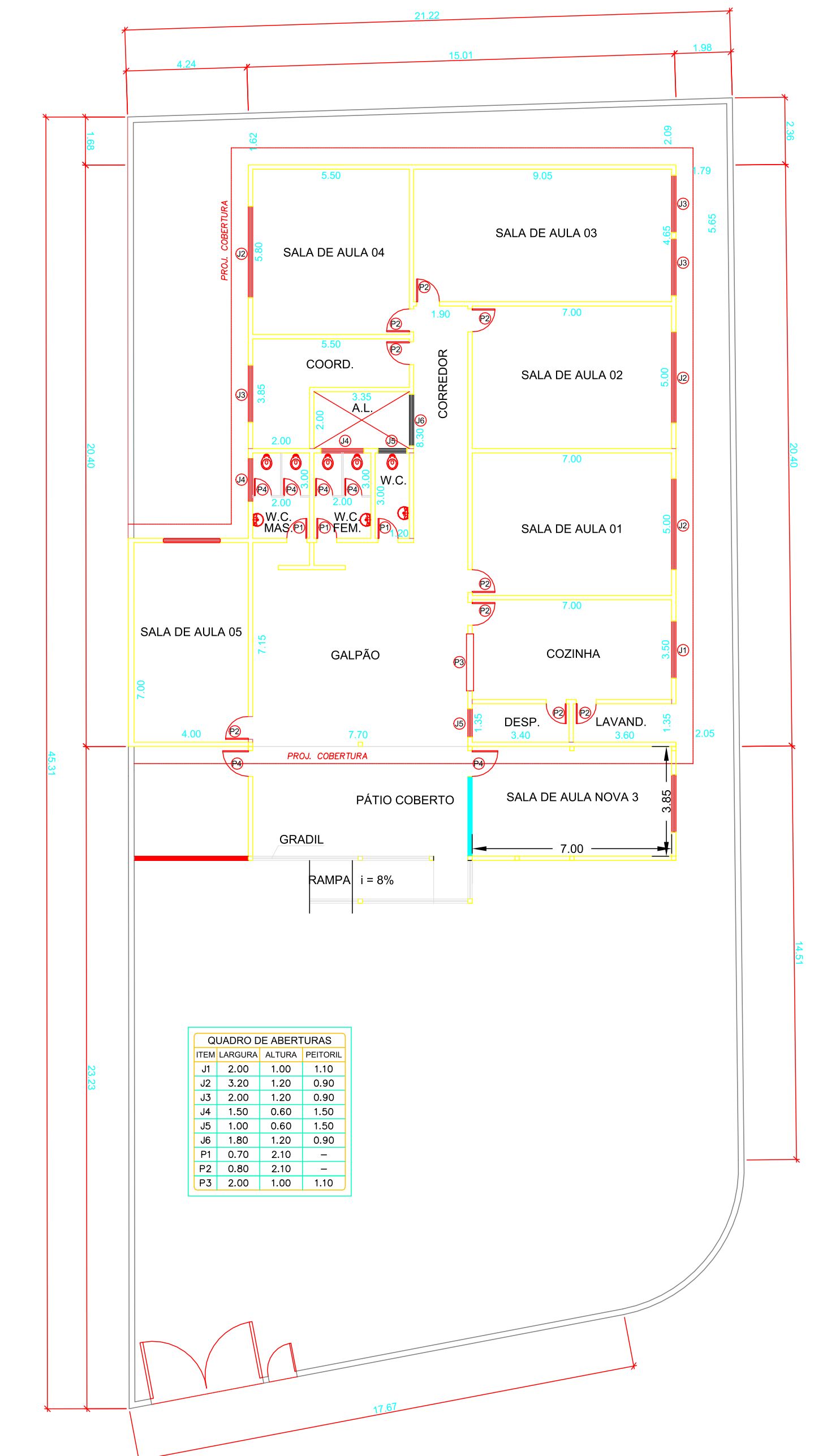
PROJETO DE AMPLIAÇÃO - ARQUITETONICO
ESCALA 1:100

 PAREDES A CONSTRUIR
 PAREDES A CONSTRUIR

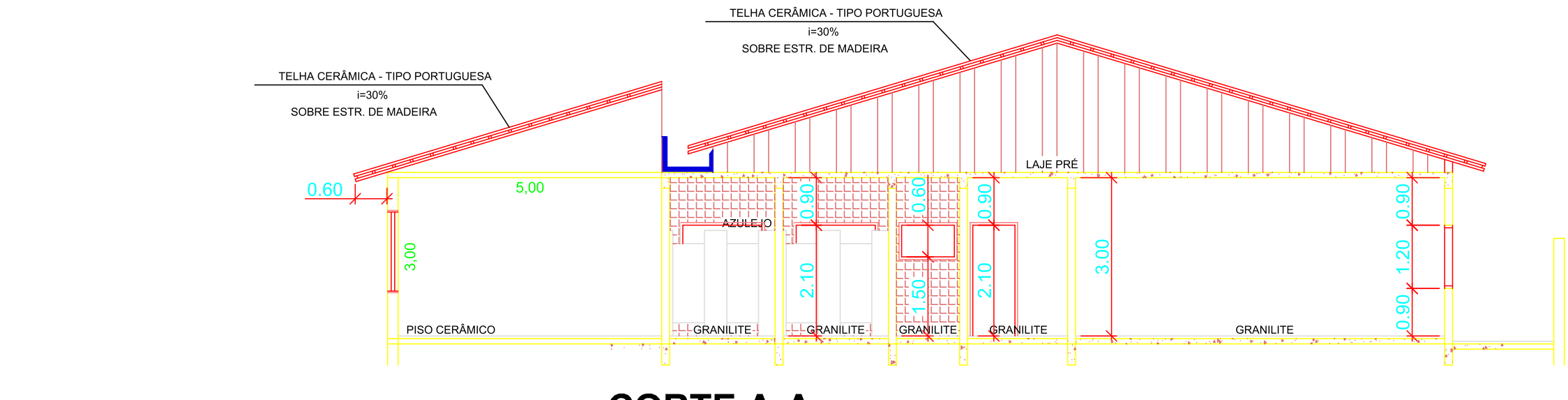


PROJETO DE COBERTURA
ESCALA 1:100

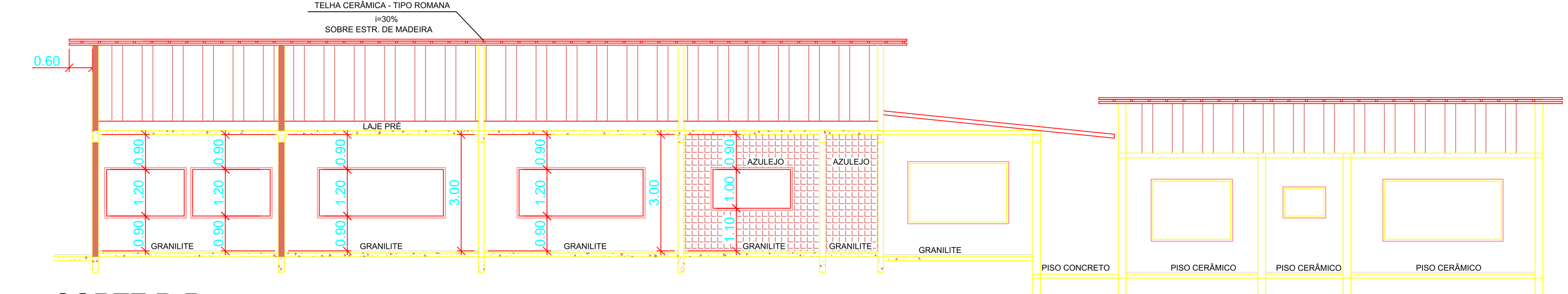
 CALHA/RUFO
 COBERTURA



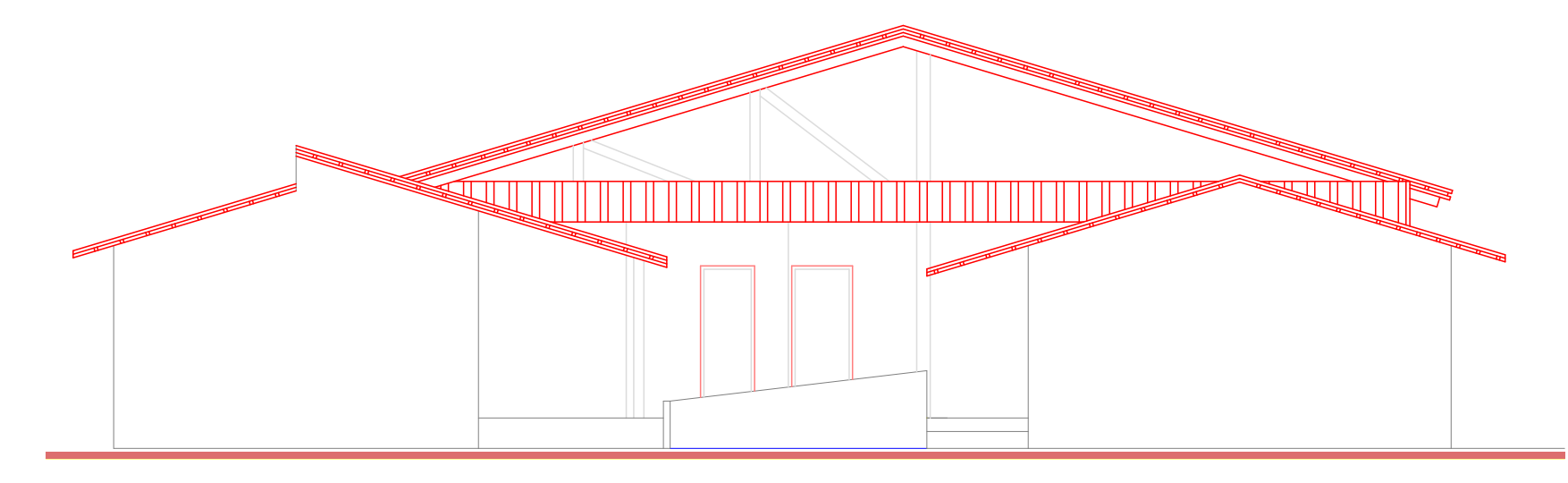
PLANTA BAIXA - EXISTENTE
ESCALA 1:100



CORTE A-A
ESCALA 1:100



CORTE B-B
ESCALA 1:100



FACHADA
SEM ESCALA

REV.	DESCRIÇÃO	DATA	POR	APROV.

Vilmá Moraes de Almeida Soares
 Secretária Municipal de Educação

ELISA HARUMI NASU
 CREA-SP 001430811

PREFEITURA DE BOITUVA

PROJETO ARQUITETÔNICO			
ENDEREÇO RUA JOSÉ THOMÉ, 635 - PARQ. SANTA RITA DE CÁSSIA - BOITUVA S.P.			
TÍTULO AMPLIAÇÃO E REFORMA DA EMEI ANGELINA FERRIELLO AGOSTINHO			
RESPONSÁVEL ELISA HARUMI NASU	ARQUITET Nº PROJ 1:100	DESENHO Thiago Luccas	APROV. VISTO
DATA 02/02/2023	ARQUIVO	REV. 02/02	REV 0

