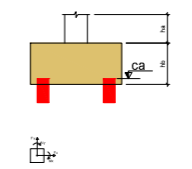


Tabela									
Nome	Seção	X (cm)	Y (cm)	Carga Mortua (kg)	Carga Viva (kg)	M _x (kgm)	M _y (kgm)	V _x (kg)	V _y (kg)
BC1	+	-3590.44	2116.85	10.0	10.0	-100.0	100.0	0.0	0.0
BC2	+	-3169.84	2116.85	10.0	10.0	-100.0	100.0	0.0	0.0
BC3	+	-2764.94	2116.85	10.0	10.0	-100.0	100.0	0.0	0.0
BC4	+	-2370.08	2116.85	10.0	10.0	-100.0	100.0	0.0	0.0
BC5	+	-1968.10	2116.85	10.0	10.0	-100.0	100.0	0.0	0.0
BC6	+	-1569.84	2116.85	10.0	10.0	-100.0	100.0	0.0	0.0
BC7	+	-1164.94	2116.85	10.0	10.0	-100.0	100.0	0.0	0.0
BC8	+	-1047.44	2116.85	10.0	10.0	-100.0	100.0	0.0	0.0
BC9	+	-770.01	2116.85	10.0	10.0	-100.0	100.0	0.0	0.0
BC10	+	-587.59	2116.85	10.0	10.0	-100.0	100.0	0.0	0.0
BC11	+	-372.05	2116.85	10.0	10.0	-100.0	100.0	0.0	0.0
BC12	+	835.06	2116.85	10.0	10.0	-100.0	100.0	0.0	0.0
BC13	+	1235.06	2116.85	10.0	10.0	-100.0	100.0	0.0	0.0
BC14	+	1652.57	2116.85	10.0	10.0	-100.0	100.0	0.0	0.0
BC15	+	2036.06	2116.85	10.0	10.0	-100.0	100.0	0.0	0.0
BC16	+	2432.56	2116.85	10.0	10.0	-100.0	100.0	0.0	0.0
BC17	+	2835.06	2116.85	10.0	10.0	-100.0	100.0	0.0	0.0
BC18	+	3020.56	2116.85	10.0	10.0	-100.0	100.0	0.0	0.0
BC19	+	3635.06	2116.85	10.0	10.0	-100.0	100.0	0.0	0.0
BC20	+	4035.06	2116.85	10.0	10.0	-100.0	100.0	0.0	0.0

Estaca	
Dimensões (cm)	Quantidade
Ø 30	39



Localização no eixo X	
Coordenadas (cm)	Nome
-3590.44	BC1
-3169.84	BC2
-2764.94	BC3
-2370.08	BC4
-1968.10	BC5
-1569.84	BC6
-1164.94	BC7
-1047.44	BC8
-770.01	BC9
-587.59	BC10
-372.05	BC11
835.06	BC12
1235.06	BC13
1652.57	BC14
2036.06	BC15
2432.56	BC16
2835.06	BC17
3020.56	BC18
3635.06	BC19
4035.06	BC20

Localização no eixo Y	
Coordenadas (cm)	Nome
2116.85	BC1, BC2, BC3, BC4, BC5, BC6, BC7, BC8, BC9, BC10, BC11, BC12, BC13, BC14, BC15, BC16, BC17, BC18, BC19, BC20
-282.15	BC21
-679.65	BC22
-1082.30	BC23, BC24, BC25, BC26, BC27, BC28, BC29, BC30, BC31, BC32, BC33
-1482.00	BC34
-1882.15	BC35
-2297.15	BC36

- BC1-BC2-BC3-BC4
- BC5-BC6-BC7-BC8
- BC9-BC10-BC11-BC12
- BC13-BC14-BC15-BC16
- BC17-BC18-BC19-BC20
- BC21-BC22-BC23-BC24
- BC25-BC26-BC27-BC28
- BC29-BC30-BC31-BC32
- BC33-BC34-BC35-BC36



Legenda dos blocos
escala 1:25

Planta de localização
escala 1:100

Assinado de forma digital por
ALFREDO PADUA MANZANO:27015 7015901838
Dados: 2026.01.08 13:14:52 -03'00'



PREFEITURA MUNICIPAL DE CAÇAPAVA
SECRETARIA DE PLANEJAMENTO URBANO E MEIO AMBIENTE

PROJETO: **Construção de Escola em Tempo Integral no Bairro Panorama – FNDE - Escola 13 salas**

DR. VAN LOPES ALMEIDA
PREFEITO MUNICIPAL

ANTÔNIO POTIGUARA CHAGAS FERREIRA
SECRETÁRIO DE PLANEJAMENTO URBANO E MEIO AMBIENTE

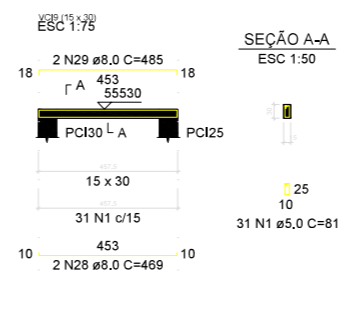
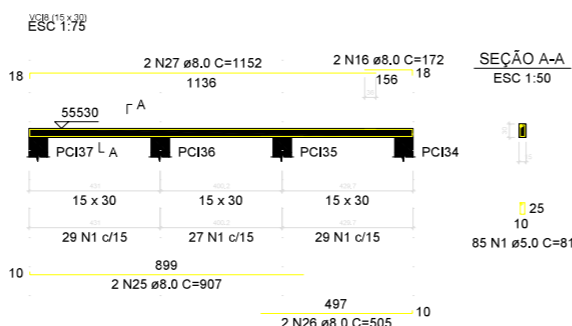
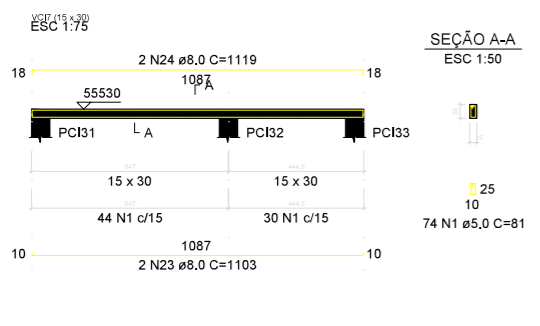
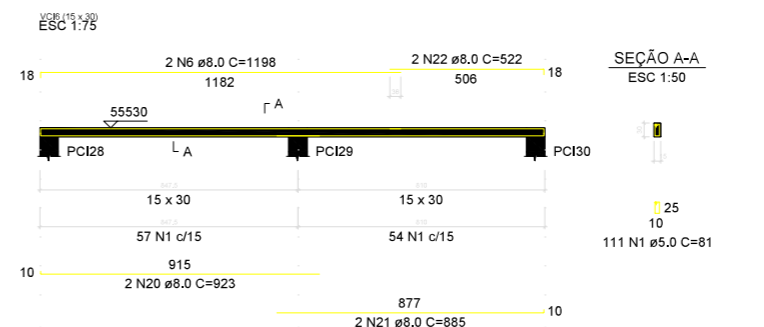
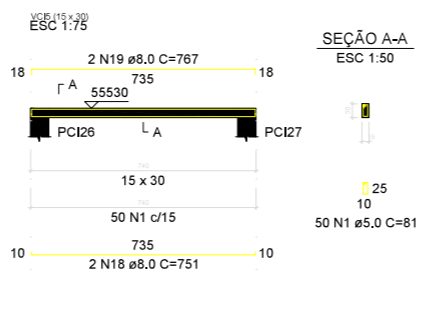
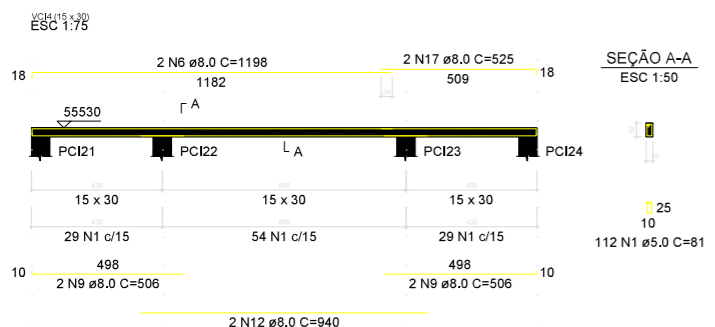
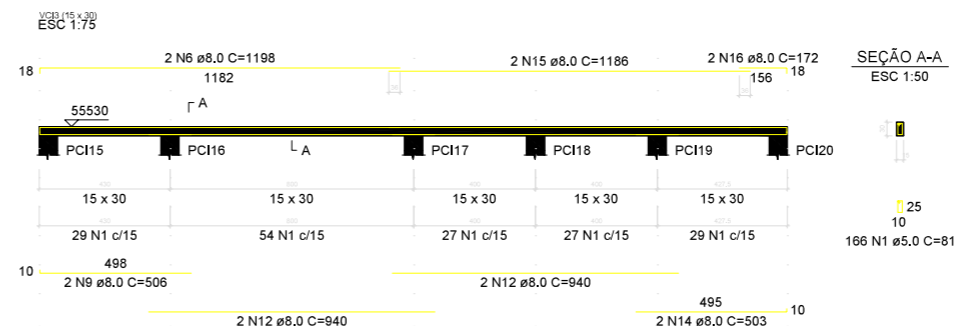
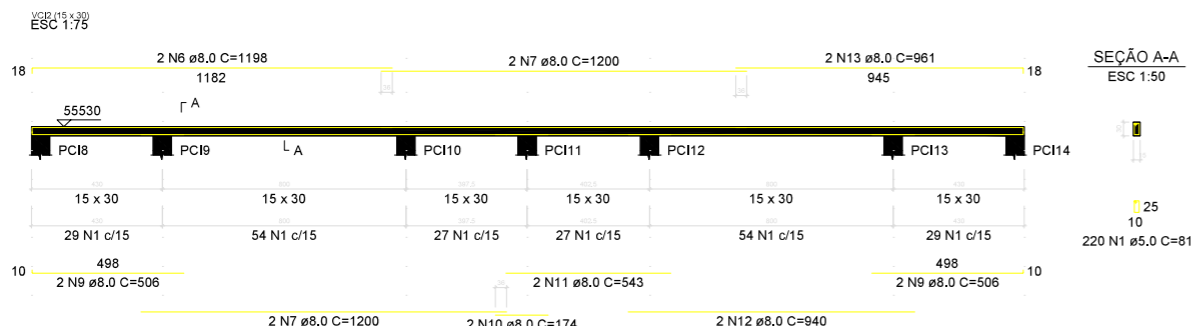
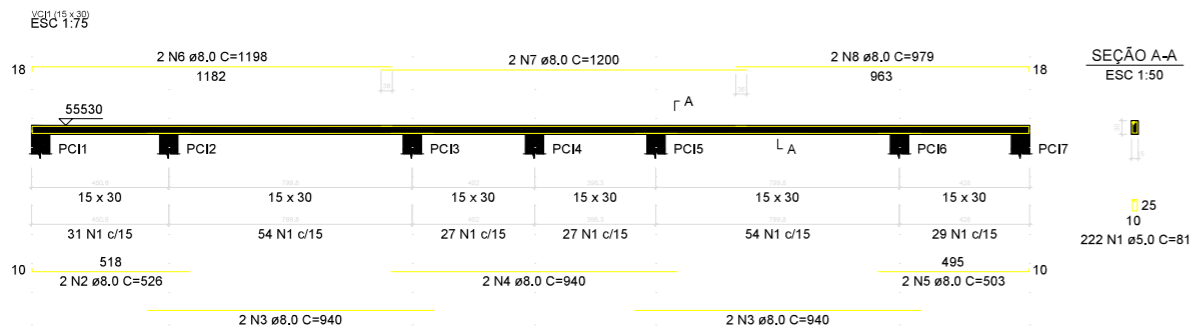
ENGR. ALFREDO PADUA MANZANO
CREA: 080238846/08
ART: 262023188/1919

Av. JOSÉ OTÁVIO DE MACEDO, Nº 841 – JARDIM PANORAMA
MUNICÍPIO DE CAÇAPAVA

PROJETO ESTRUTURAL

Escudo: Indicado Data: NOV/2025

Revisão: 01/05



RELAÇÃO DO AÇO

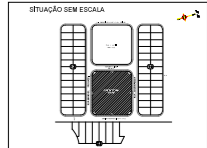
VC11 VC14 VC17	VC12 VC15 VC18	VC13 VC16 VC19	AÇO	N	DIAM (mm)	QUANT	C.UNIT (cm)	C.TOTAL (cm)
			CA60	1	5.0	1071	81	86751
			CA50	2	8.0	2	526	1052
				3	8.0	4	940	3760
				4	8.0	2	940	1880
				5	8.0	2	503	1006
				6	8.0	10	1198	11980
				7	8.0	6	1200	7200
				8	8.0	2	979	1958
				9	8.0	10	506	5060
				10	8.0	2	174	348
				11	8.0	2	543	1086
				12	8.0	8	940	7520
				13	8.0	2	961	1922
				14	8.0	2	503	1006
				15	8.0	2	1186	2372
				16	8.0	4	172	688
				17	8.0	2	525	1050
				18	8.0	2	751	1502
				19	8.0	2	767	1534
				20	8.0	2	923	1846
				21	8.0	2	885	1770
				22	8.0	2	522	1044
				23	8.0	2	1103	2206
				24	8.0	2	1119	2238
				25	8.0	2	907	1814
				26	8.0	2	505	1010
				27	8.0	2	1152	2304
				28	8.0	2	469	938
				29	8.0	2	485	970

RESUMO DO AÇO

AÇO	DIAM (mm)	C.TOTAL (m)	PESO + 10% (kg)
CA50	8.0	690.6	299.8
CA60	5.0	867.5	147.1
PESO TOTAL (kg)			
CA50			299.8
CA60			147.1

Volume de concreto (C-30) = 6.11 m³
 Área de forma = 101.87 m²

ALFREDO PADUA
 Assinado de forma digital por ALFREDO PADUA MANZANO: MANZANO27015901838
 Dados: 2026.01.08 13:14:27 -03'00'



PREFEITURA MUNICIPAL DE CAÇAPAVA
 SECRETARIA DE PLANEJAMENTO URBANO E MEIO AMBIENTE

PROJETO: Construção de Escola em Tempo Integral no Bairro Panorama – FNDE - Escola 13 salas

DR. YAN LOPES ALMEIDA
 PREFEITO MUNICIPAL

ANTONIO POTSQUARA CHAGAS FERREIRA
 SECRETÁRIO DE PLANEJAMENTO URBANO E MEIO AMBIENTE

SÉRGIO GARRA
 SECRETÁRIO MUNICIPAL DE EDUCAÇÃO

ENGLER ALFREDO PADUA MANZANO
 PROJ. 2023/188-1/19

Endereço: AVENIDA JOSÉ OTÁVIO DE MACEDO, Nº 841 - JARDIM PANORAMA
 Município: MUNICÍPIO DE CAÇAPAVA
 Projeto: PROJETO ESTRUTURAL
 Descrição: CIRCULAÇÃO
 Escala: Escala: Indecida
 Data: NOV/2025
 Revisão: R01