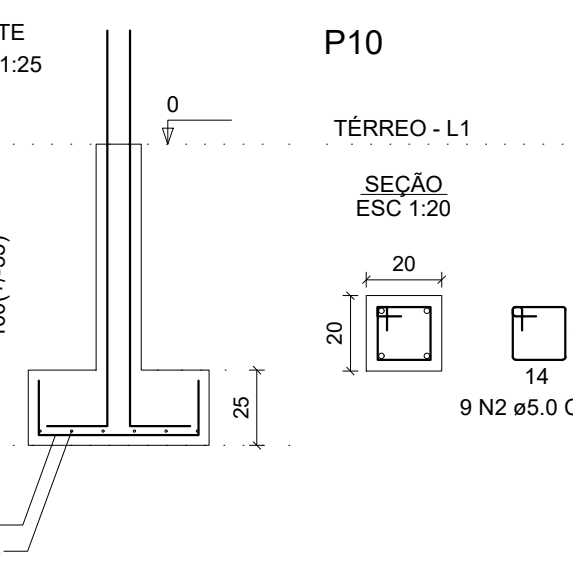
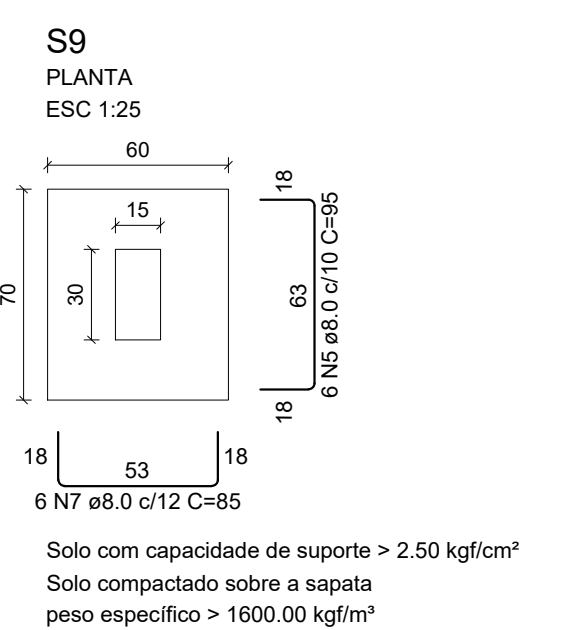
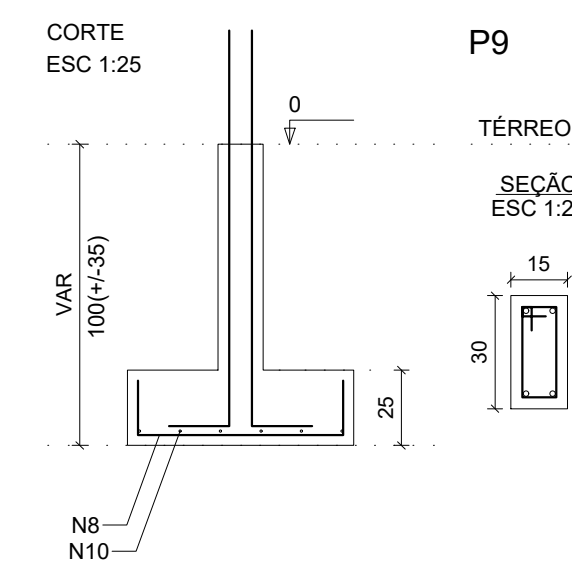
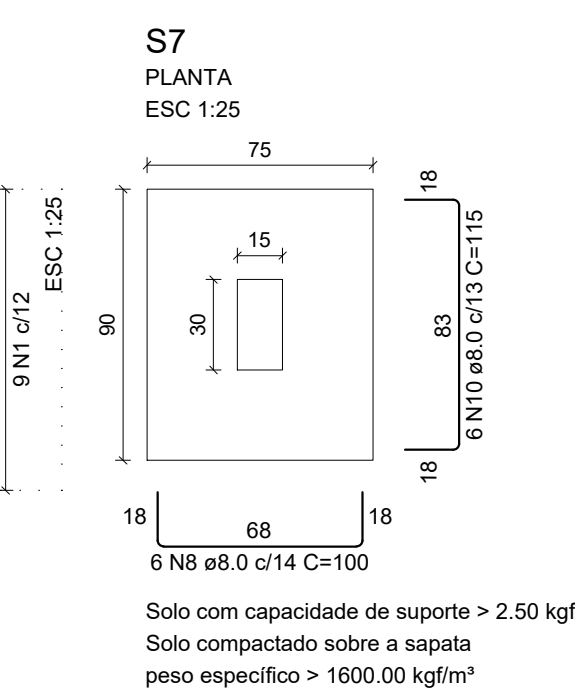
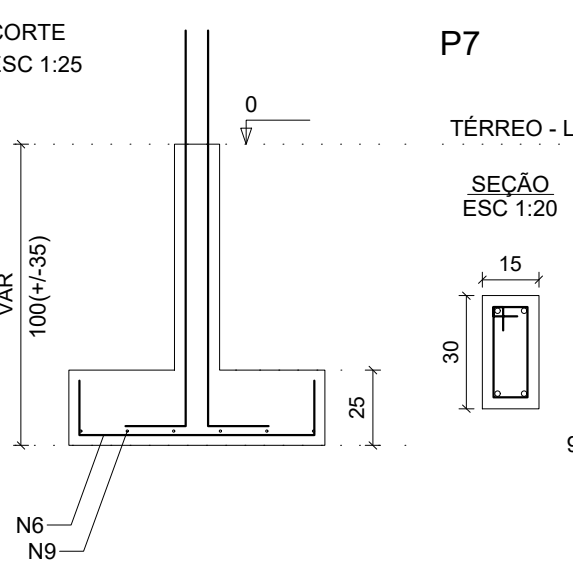
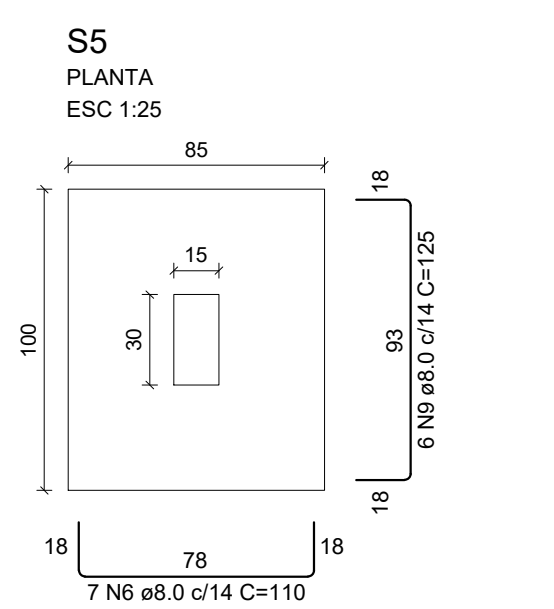


RELAÇÃO DO AÇO

| AÇO  | N  | DIAM (mm) | QUANT | C.UNIT (cm) | C.TOTAL (cm) |
|------|----|-----------|-------|-------------|--------------|
| CA60 | 1  | 5.0       | 99    | 77          | 7623         |
|      | 2  | 5.0       | 9     | 67          | 603          |
|      | 3  | 5.0       | 18    | 47          | 846          |
|      | 4  | 8.0       | 36    | 80          | 2880         |
|      | 5  | 8.0       | 42    | 95          | 3900         |
|      | 6  | 8.0       | 31    | 110         | 3410         |
|      | 7  | 8.0       | 24    | 85          | 2040         |
|      | 8  | 8.0       | 12    | 100         | 1200         |
|      | 9  | 8.0       | 6     | 125         | 750          |
|      | 10 | 8.0       | 6     | 115         | 690          |
|      | 11 | 8.0       | 6     | 90          | 540          |
|      | 12 | 8.0       | 6     | 105         | 630          |
|      | 13 | 10.0      | 56    | VAR         | VAR          |

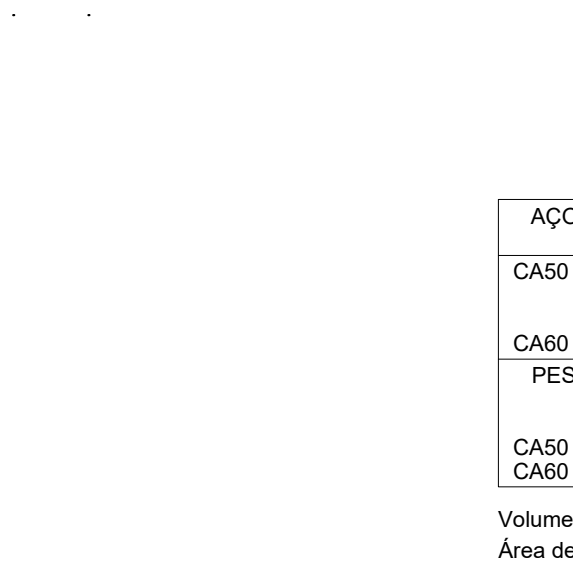
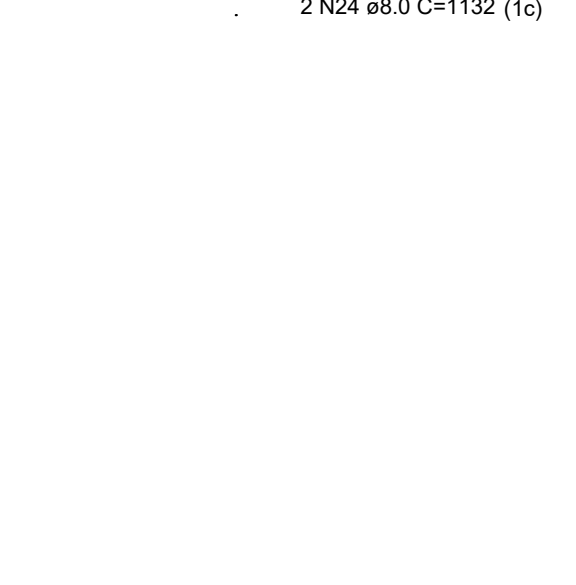
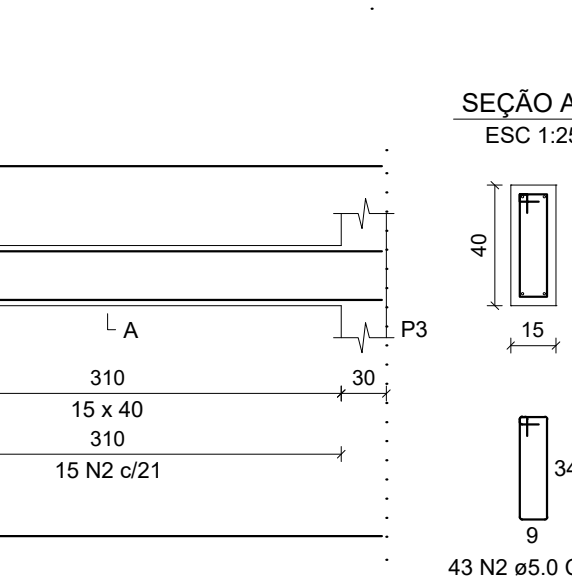
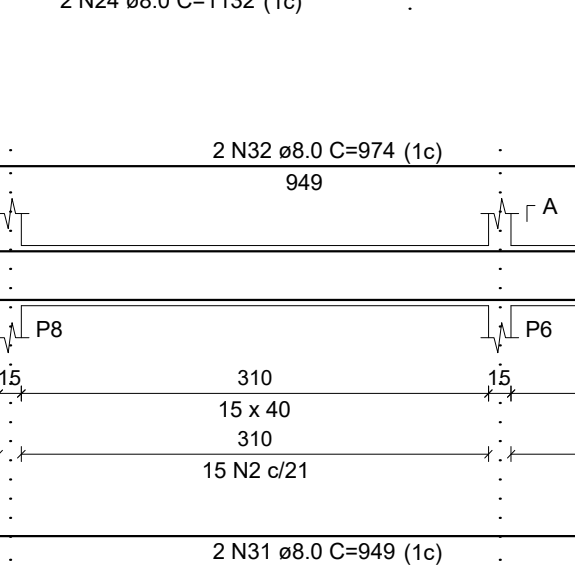
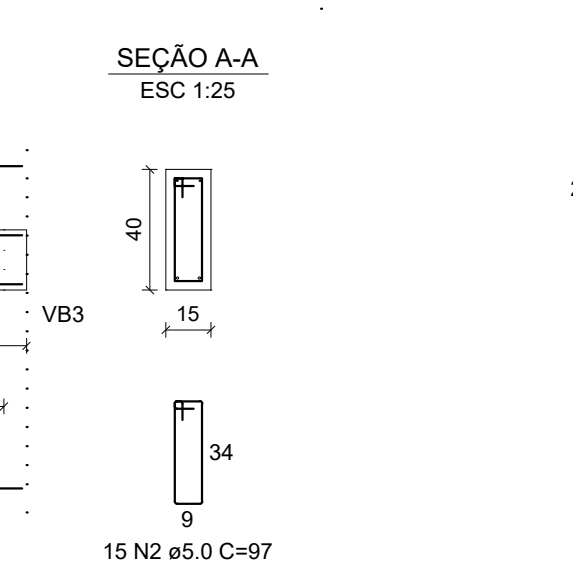
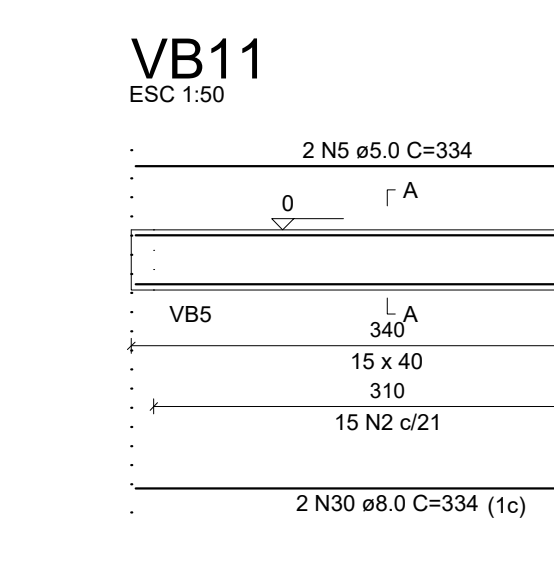
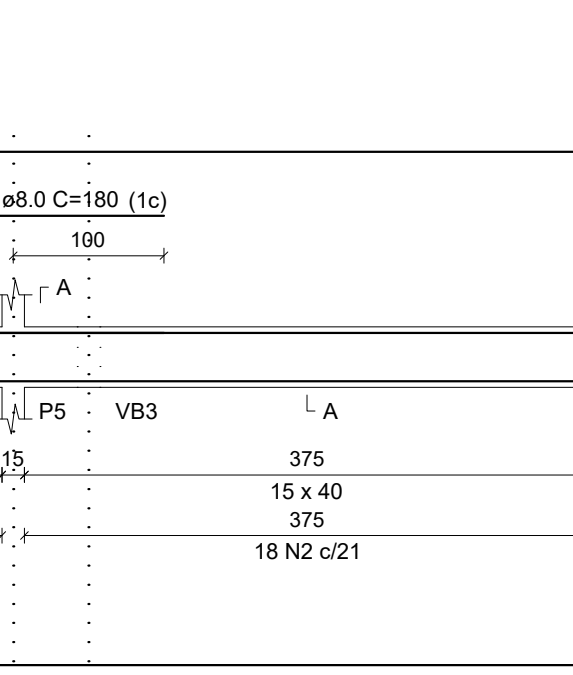
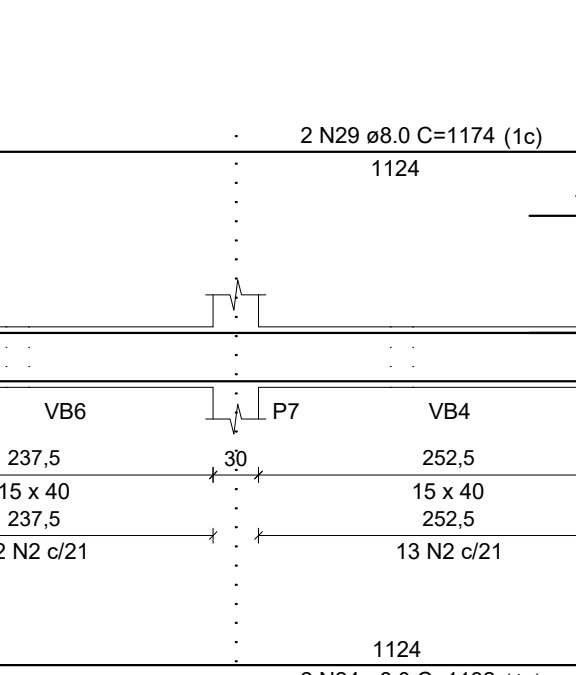
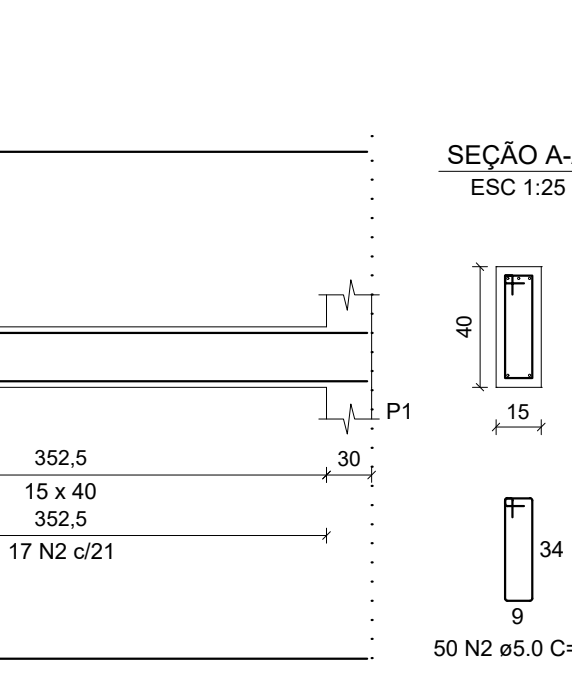
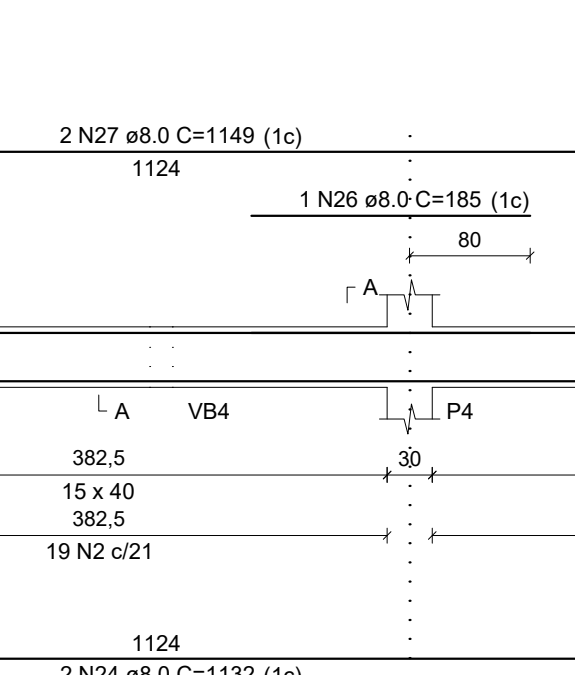
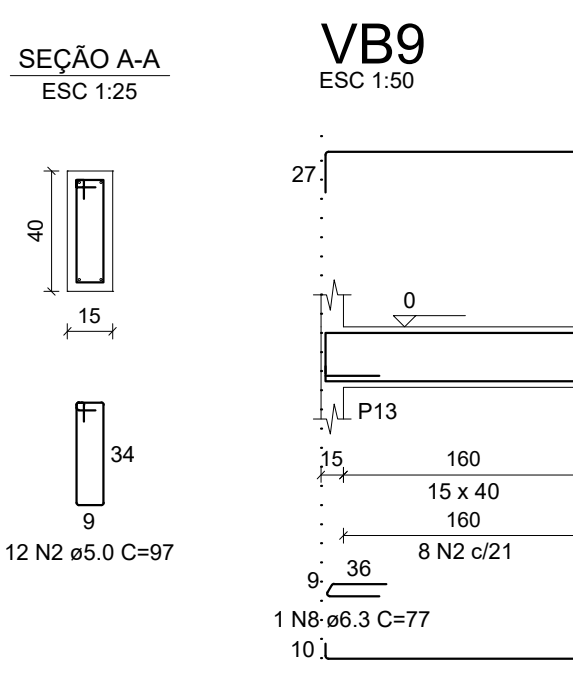
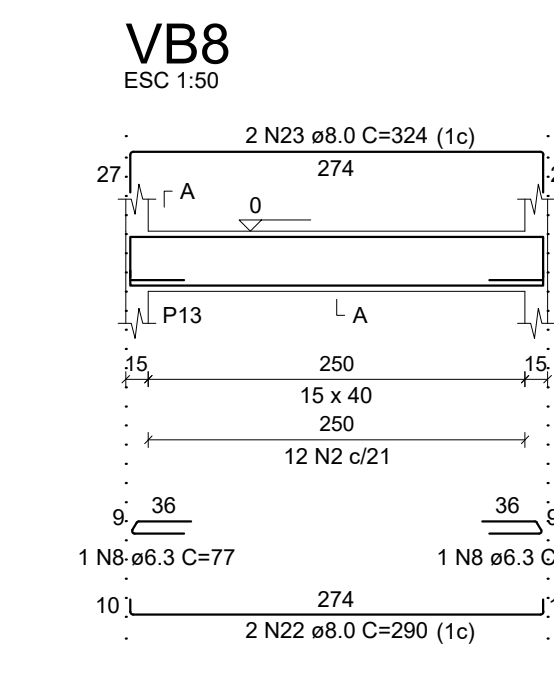
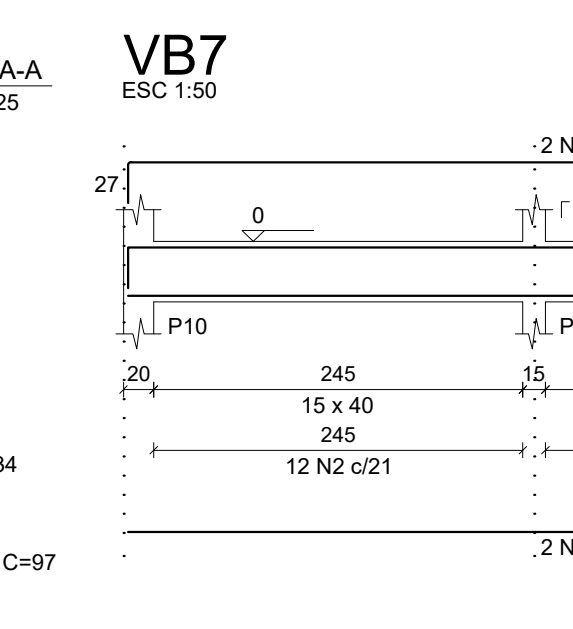
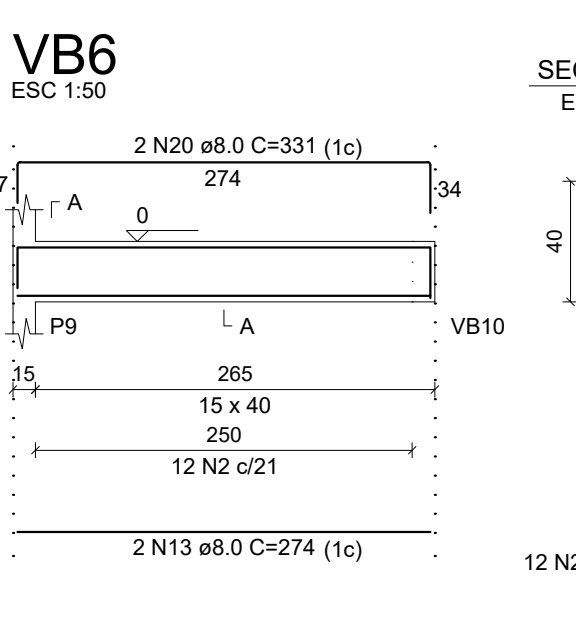
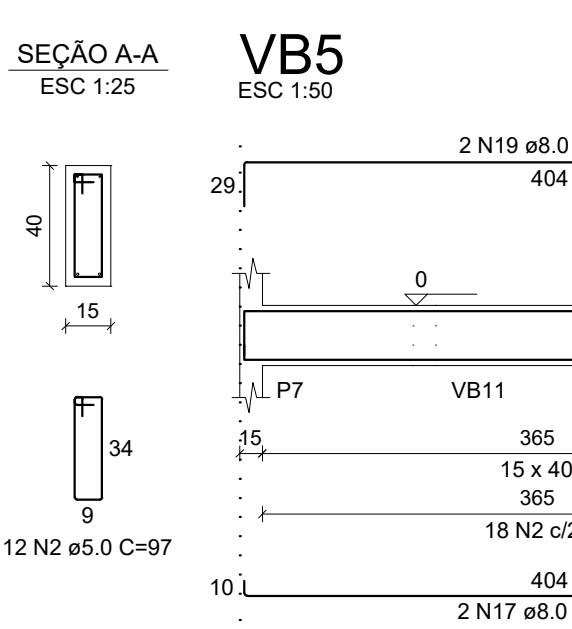
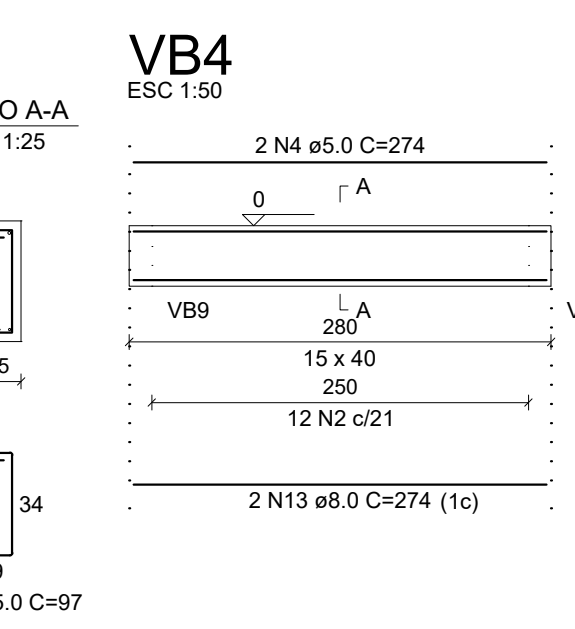
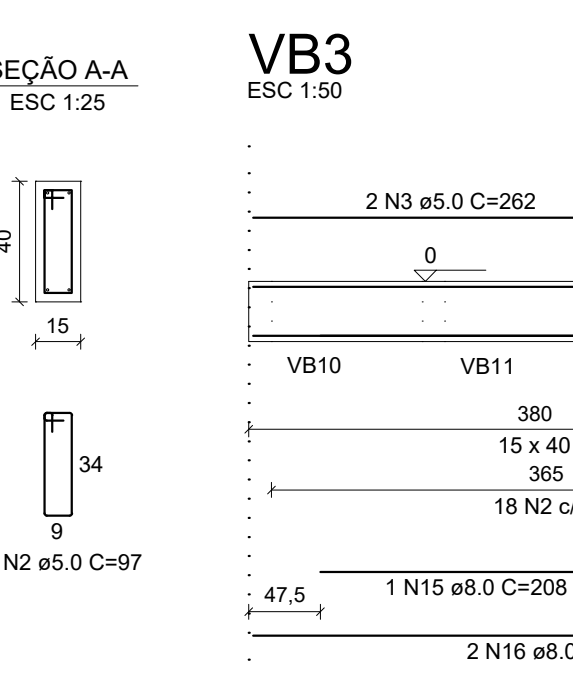
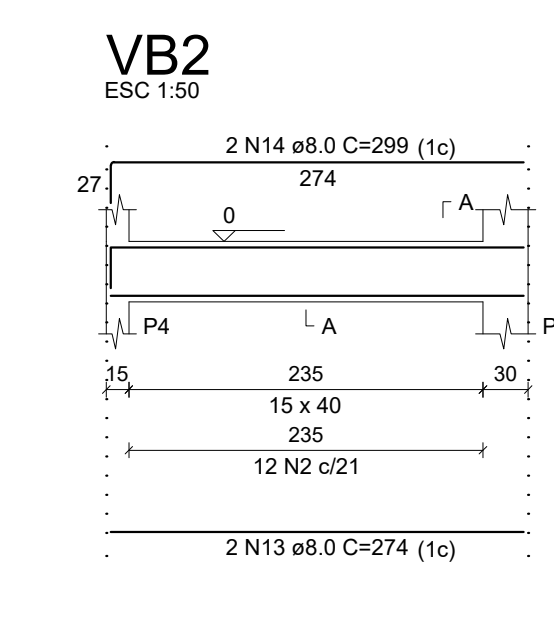
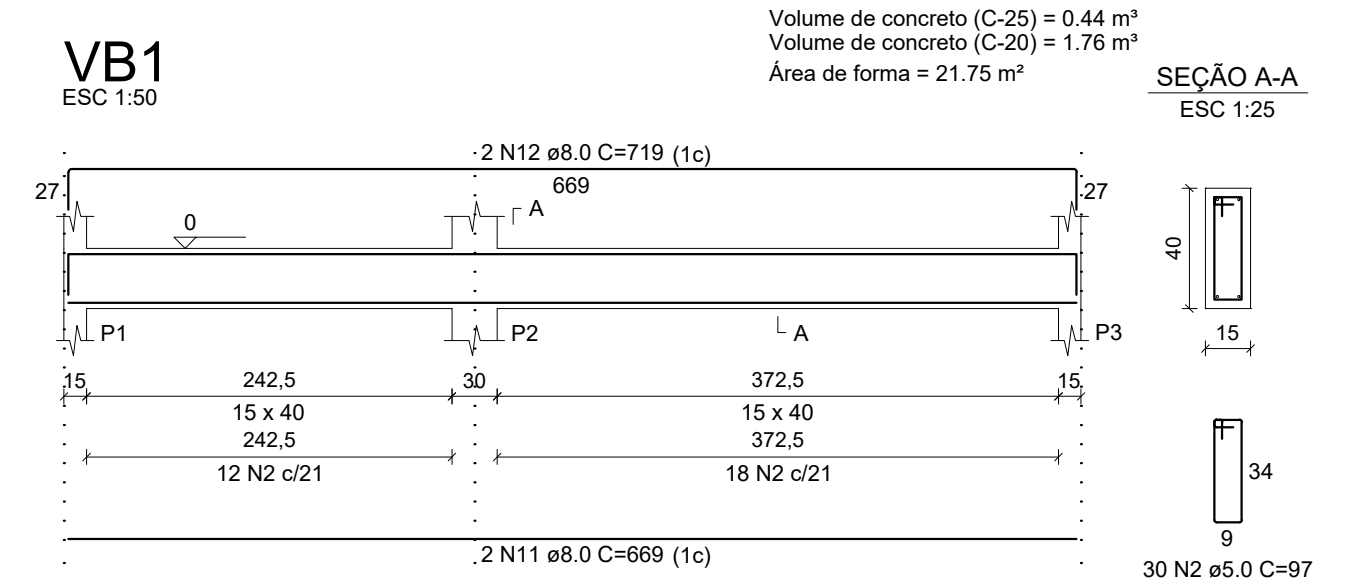
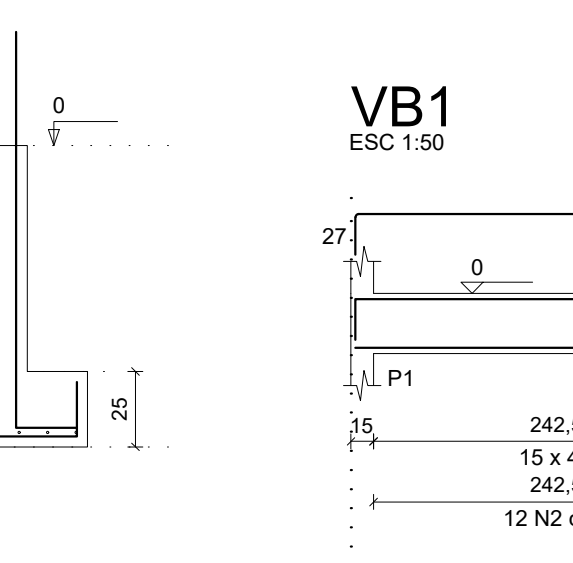
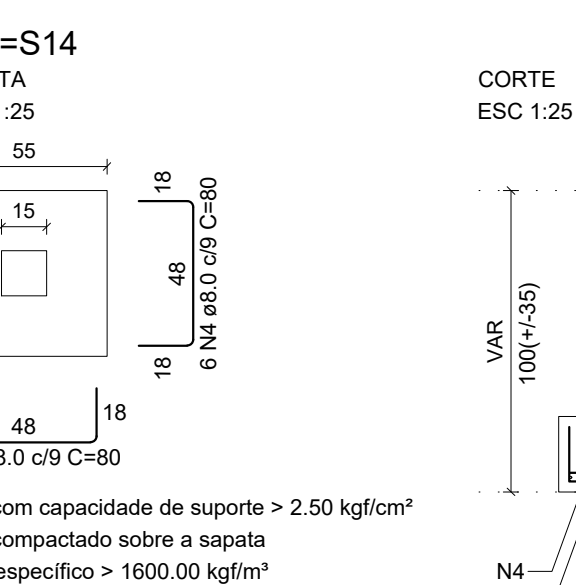
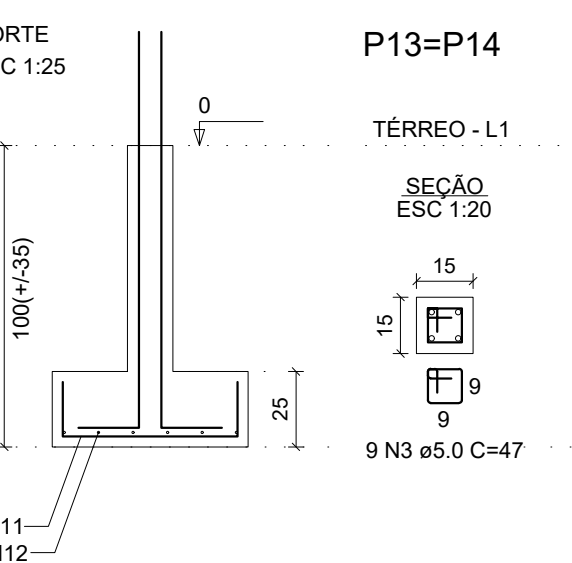
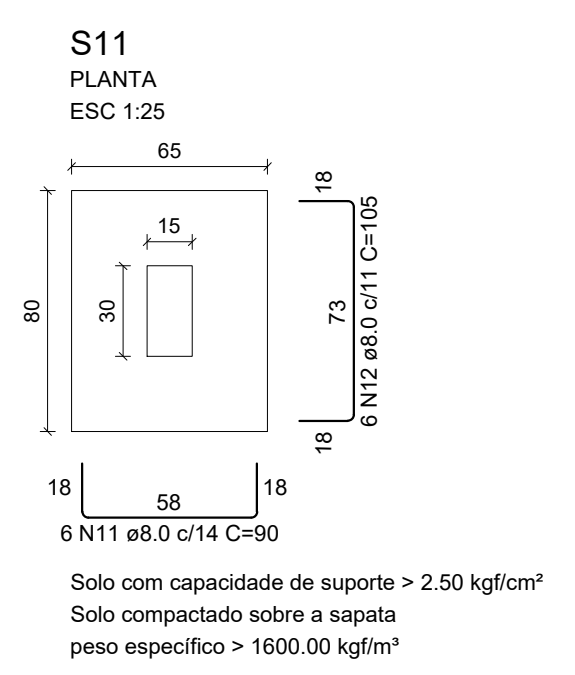
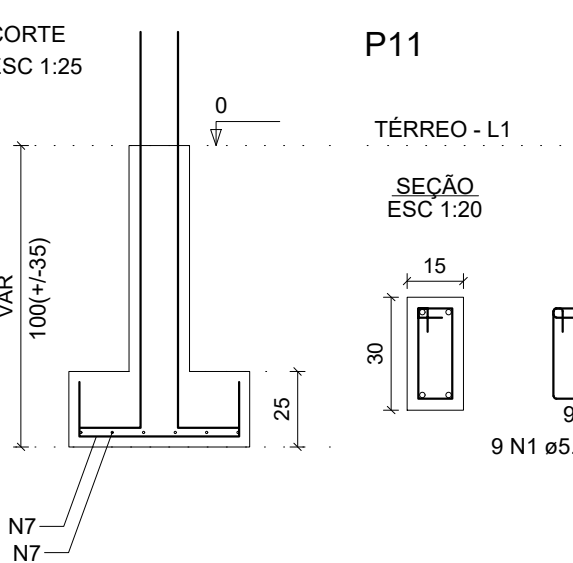
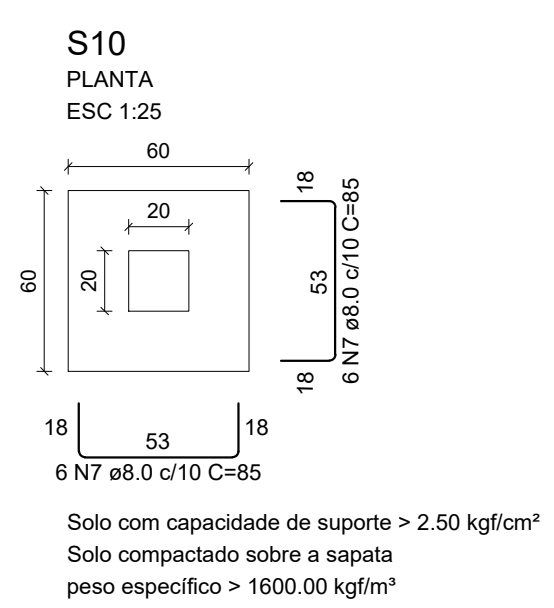


RESUMO DO AÇO

| AÇO  | DIAM (mm) | C.TOTAL (m) | PESO + 10% (kg) |
|------|-----------|-------------|-----------------|
| CA50 | 8.0       | 161.3       | 70              |
| CA60 | 10.0      | 85.7        | 58.1            |
| CA60 | 5.0       | 90.7        | 15.4            |

PESO TOTAL (kg)  
CA50 128.1  
CA60 15.4

Volume de concreto (C-25) = 0.44 m<sup>3</sup>  
Volume de concreto (C-20) = 1.76 m<sup>3</sup>  
Área de forma = 21.75 m<sup>2</sup>



RESUMO DO AÇO

| AÇO  | DIAM (mm) | C.TOTAL (m) | PESO + 10% (kg) |
|------|-----------|-------------|-----------------|
| CA50 | 6.3       | 15.2        | 4.1             |
|      | 8.0       | 294.6       | 127.9           |
|      | 10.0      | 3.2         | 2.2             |
| CA60 | 5.0       | 339.2       | 57.5            |

PESO TOTAL (kg)  
CA50 134.2  
CA60 57.5

Volume de concreto (C-25) = 4.04 m<sup>3</sup>  
Área de forma = 71.31 m<sup>2</sup>

RELAÇÃO DO AÇO

| AÇO  | N  | DIAM (mm) | QUANT | C.UNIT (cm) | C.TOTAL (cm) |
|------|----|-----------|-------|-------------|--------------|
| CA60 | 1  | 5.0       | 30    | 93          | 2790         |
|      | 2  | 5.0       | 303   | 97          | 29391        |
|      | 3  | 5.0       | 2     | 262         | 524          |
|      | 4  | 5.0       | 2     | 274         | 548          |
|      | 5  | 5.0       | 2     | 334         | 668          |
|      | 6  | 6.3       | 4     | 265         | 1140         |
|      | 7  | 6.3       | 1     | 75          | 75           |
|      | 8  | 6.3       | 4     | 77          | 308          |
|      | 9  | 8.0       | 2     | 677         | 1354         |
|      | 10 | 8.0       | 2     | 712         | 1424         |
|      | 11 | 8.0       | 4     | 669         | 2676         |
|      | 12 | 8.0       | 2     | 719         | 1438         |
|      | 13 | 8.0       | 6     | 274         | 1644         |
|      | 14 | 8.0       | 2     | 299         | 598          |
|      | 15 | 8.0       | 1     | 208         | 208          |
|      | 16 | 8.0       | 2     | 404         | 808          |
|      | 17 | 8.0       | 2     | 412         | 824          |
|      | 18 | 8.0       | 1     | 147         | 147          |
|      | 19 | 8.0       | 2     | 431         | 862          |
|      | 20 | 8.0       | 2     | 331         | 662          |
|      | 21 | 8.0       | 2     | 694         | 1388         |
|      | 22 | 8.0       | 2     | 290         | 580          |
|      | 23 | 8.0       | 4     | 324         | 648          |
|      | 24 | 8.0       | 1     | 1132        | 4528         |
|      | 25 | 8.0       | 1     | 150         | 150          |
|      | 26 | 8.0       | 1     | 185         | 185          |
|      | 27 | 8.0       | 2     | 1149        | 2298         |
|      | 28 | 8.0       | 1     | 180         | 180          |
|      | 29 | 8.0       | 2     | 1174        | 2348         |
|      | 30 | 8.0       | 2     | 334         | 668          |
|      | 31 | 8.0       | 2     | 949         | 1898         |
|      | 32 | 8.0       | 2     | 974         | 1948         |
|      | 33 | 10.0      | 2     | 162         | 324          |

DISTRIBUIÇÃO AUTOMÁTICA DE CÓPIAS

| FEITO | VISTO | APROV. | DATA | APROV. | DATA |
|-------|-------|--------|------|--------|------|
|       |       |        |      |        |      |

ALTERAÇÕES

NOTAS:  
1 - MEDIDAS EM CENTÍMETRO, BITOLAS EM MILÍMETRO, EXCETO ONDE INDICADO;  
2 - CONCRETO FUNDAÇÃO fck>=20,0 MPa; CONCRETO SUPERESTRUTURA fck>=25,0 MPa;  
3 - COBRIMENTO DA ARMAÇÃO = 2,5 cm;  
4 - DOBRAMENTO DAS BARRAS DE ACORDO COM A NORMA NBR-6118;  
5 - MEDIDAS EM CENTÍMETROS, ELEVACIONES EM METROS;  
6 - MÓDULO DE ELASTICIDADE INICIAL DO CONCRETO NBR118/2003 ECI=5600 fck (EM MPa)

DESENHISTA:  
WADSON CORCINI

ENGENHEIRO CIVIL:  
EDUARDO PEREIRA REAL  
CREA MG 41.091/D

VISTO:  
ÁREA CONSTRUÍDA

APROV.  
MAIO / 2022

PREFEITURA MUNICIPAL DE RIO DOCE

MAURO PEREIRA MARTINS

PROGRAMA MORAR MELHOR

PROJETO ESTRUTURAL

SAPATAS E VIGAS PAV. TÉRREO - NÍVEL 0,00

FOUNHA: 02/03

ESCALA: INDICADAS

A SER DEFINIDO PELO DEPARTAMENTO DE HABITAÇÃO