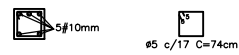


DETALHAMENTO DOS PILARES DETALHAMENTO DAS VIGAS, EXCETO PARA VIGAS EM BALANÇO (V12, V22, V23, V25, V26, V28)

P1=P4=P5=P6 (20X20)



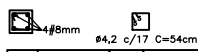
AÇO	DIAM.(mm)	QT.	COMP.(cm)	TOTAL(cm)	PESO (Kg)
CA50	10	5	300	1500	9,26
CA60	5	18	74	1332	2,05

P2=P3 (30X15)



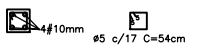
AÇO	DIAM.(mm)	QT.	COMP.(cm)	TOTAL(cm)	PESO (Kg)
CA50	10	5	300	1500	9,26
CA60	5	18	84	1512	2,33

P7=P8=P9=P13=P14=P15=P16=P17=P27=P28=P29=P30=P31=P35=P38=P41 (15X15)



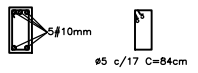
AÇO	DIAM.(mm)	QT.	COMP.(cm)	TOTAL(cm)	PESO (Kg)
CA50	8	4	300	1200	4,74
CA60	4,2	18	54	972	1,06

P10=P11=P12=P18=P19=P20=P22=P23=P26=P32 (15X15)



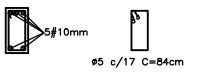
AÇO	DIAM.(mm)	QT.	COMP.(cm)	TOTAL(cm)	PESO (Kg)
CA50	10	4	400	1600	9,87
CA60	5	24	54	1296	2,00

P33=P34 (15X30)



AÇO	DIAM.(mm)	QT.	COMP.(cm)	TOTAL(cm)	PESO (Kg)
CA50	10	5	400	2000	12,34
CA60	5	24	84	2016	3,10

P36=P37 (15X30)



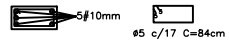
AÇO	DIAM.(mm)	QT.	COMP.(cm)	TOTAL(cm)	PESO (Kg)
CA50	10	4	300	1200	7,40
CA60	5	18	84	1512	2,32

P39(30X15)

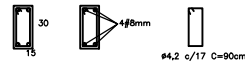


AÇO	DIAM.(mm)	QT.	COMP.(cm)	TOTAL(cm)	PESO (Kg)
CA50	10	5	400	2000	12,34
CA60	5	24	84	2016	3,10

P40 (30X15)



AÇO	DIAM.(mm)	QT.	COMP.(cm)	TOTAL(cm)	PESO (Kg)
CA50	10	5	400	2000	12,34
CA60	5	24	84	2016	3,10



V1 (15X40)

AÇO	DIAM.(mm)	QT.	COMP.(cm)	TOTAL(cm)	PESO (Kg)
CA50	8	4	327	1308	5,17
CA60	4,2	20	90	2080	2,27

V2 (15X40)

AÇO	DIAM.(mm)	QT.	COMP.(cm)	TOTAL(cm)	PESO (Kg)
CA50	8	4	795	3180	12,56
CA60	4,2	47	90	4888	5,33

V3=V5 (15X40)

AÇO	DIAM.(mm)	QT.	COMP.(cm)	TOTAL(cm)	PESO (Kg)
CA50	8	4	653	2612	10,32
CA60	4,2	39	90	4056	4,42

V4 (15X40)

AÇO	DIAM.(mm)	QT.	COMP.(cm)	TOTAL(cm)	PESO (Kg)
CA50	8	4	1287	5148	20,33
CA60	4,2	76	90	7904	8,62

V6=V8 (15X40)

AÇO	DIAM.(mm)	QT.	COMP.(cm)	TOTAL(cm)	PESO (Kg)
CA50	8	4	415	1660	6,56
CA60	4,2	25	90	2600	2,83

V7 (15X40)

AÇO	DIAM.(mm)	QT.	COMP.(cm)	TOTAL(cm)	PESO (Kg)
CA50	8	4	430	1720	6,80
CA60	4,2	26	90	2704	2,95

V9 (15X40)

AÇO	DIAM.(mm)	QT.	COMP.(cm)	TOTAL(cm)	PESO (Kg)
CA50	8	4	1095	4380	17,30
CA60	4,2	66	90	6864	7,48

V10 (15X40)

AÇO	DIAM.(mm)	QT.	COMP.(cm)	TOTAL(cm)	PESO (Kg)
CA50	8	4	165	660	2,61
CA60	4,2	10	90	1040	1,14

V11 (15X40)

AÇO	DIAM.(mm)	QT.	COMP.(cm)	TOTAL(cm)	PESO (Kg)
CA50	8	4	375	1500	5,93
CA60	4,2	23	90	2392	2,61

V13 (15X40)

AÇO	DIAM.(mm)	QT.	COMP.(cm)	TOTAL(cm)	PESO (Kg)
CA50	8	4	820	3280	12,96
CA60	4,2	49	90	5096	5,55

V14 (15X40)

AÇO	DIAM.(mm)	QT.	COMP.(cm)	TOTAL(cm)	PESO (Kg)
CA50	8	4	505	2020	7,98
CA60	4,2	30	90	3120	3,40

V15=V16=V17=V18 (15X40)

AÇO	DIAM.(mm)	QT.	COMP.(cm)	TOTAL(cm)	PESO (Kg)
CA50	8	4	340	1360	5,37
CA60	4,2	20	90	2080	2,27

V15=V16=V17=V18 (15X40)

AÇO	DIAM.(mm)	QT.	COMP.(cm)	TOTAL(cm)	PESO (Kg)
CA50	8	4	340	1360	5,37
CA60	4,2	20	90	2080	2,27

V19 (15X40)

AÇO	DIAM.(mm)	QT.	COMP.(cm)	TOTAL(cm)	PESO (Kg)
CA50	8	4	125	500	1,98
CA60	4,2	8	90	832	0,91

V20 (15X40)

AÇO	DIAM.(mm)	QT.	COMP.(cm)	TOTAL(cm)	PESO (Kg)
CA50	8	4	455	1820	7,20
CA60	4,2	27	90	2808	3,06

V21 (15X40)

AÇO	DIAM.(mm)	QT.	COMP.(cm)	TOTAL(cm)	PESO (Kg)
CA50	8	4	415	1660	6,56
CA60	4,2	25	90	2600	2,84

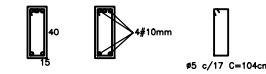
V24 (15X40)

AÇO	DIAM.(mm)	QT.	COMP.(cm)	TOTAL(cm)	PESO (Kg)
CA50	8	4	855	3420	6,56
CA60	4,2	51	90	5304	5,78

V27 (15X40)

AÇO	DIAM.(mm)	QT.	COMP.(cm)	TOTAL(cm)	PESO (Kg)
CA50	8	4	315	1260	4,98
CA60	4,2	19	90	1976	2,15

DETALHAMENTO DAS VIGAS EM BALANÇO – V12, V22, V23, V25, V26, V28



V12 (15X40)

AÇO	DIAM.(mm)	QT.	COMP.(cm)	TOTAL(cm)	PESO (Kg)
CA50	10	5	430	2150	13,26
CA60	5	26	104	2704	4,16

V22=V23 (15X40)

AÇO	DIAM.(mm)	QT.	COMP.(cm)	TOTAL(cm)	PESO (Kg)
CA50	10	5	730	3650	22,52
CA60	5	43	104	4472	6,89

V25=V26 (15X40)

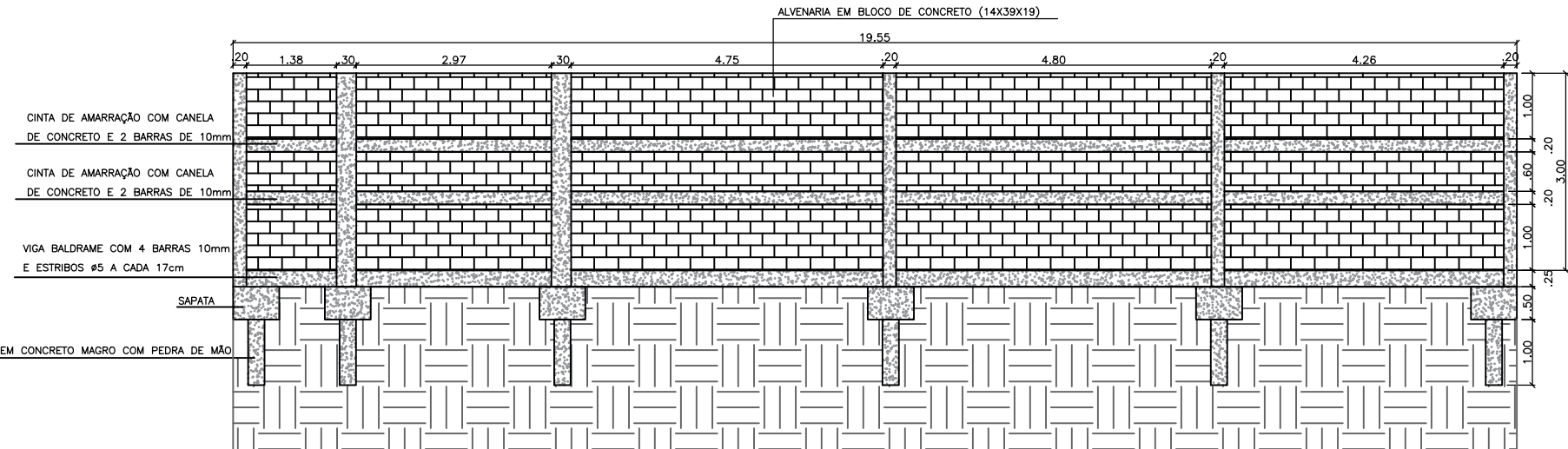
AÇO	DIAM.(mm)	QT.	COMP.(cm)	TOTAL(cm)	PESO (Kg)
CA50	10	5	405	3240	20,00
CA60	5	24	104	2496	3,84

V25=V26 (15X40)

AÇO	DIAM.(mm)	QT.	COMP.(cm)	TOTAL(cm)	PESO (Kg)
CA50	10	5	405	3240	20,00
CA60	5	24	104	2496	3,84

V28 (15X40)

AÇO	DIAM.(mm)	QT.	COMP.(cm)	TOTAL(cm)	PESO (Kg)
CA50	10	5	380	1900	11,72
CA60	5	23	104	2392	3,68



CENTRO DE SAÚDE MENTAL

FOLHA: 04/04

PROPRIETÁRIO

PREFEITURA MUNICIPAL  
CNPJ: 18.239.608/0001-39

RESPONSÁVEL TÉCNICO

BRENO OLIVEIRA MENDES  
CREA: 246311/D MG

ESTRUTURAL

PLANTA DE FORMA PILARES, VIGAS  
E LAJES. DETALHAMENTO DO MURO  
DE ARRIMO

ENDEREÇO: AVENIDA JOSÉ VILELA DA COSTA

BAIRRO: SANTA MARIA

MUNICÍPIO: ILICÍNEA