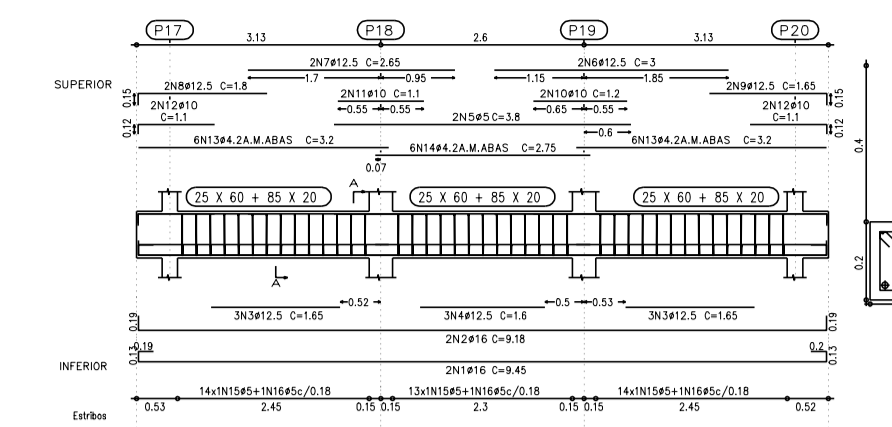
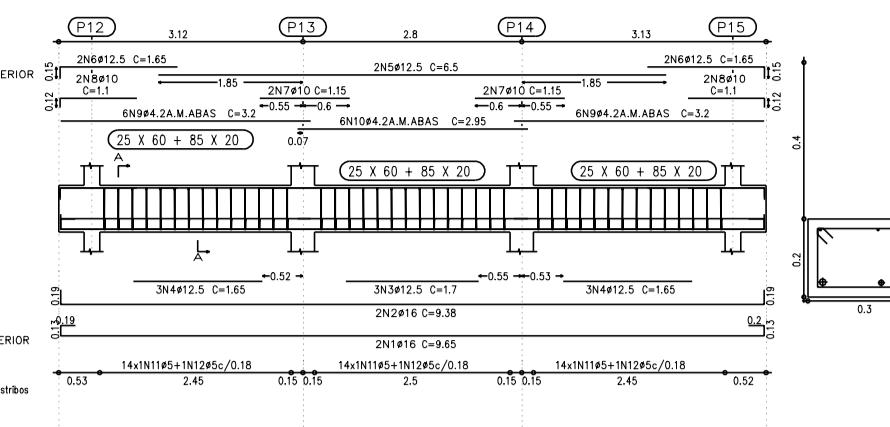


BALDRAME 110x60 0,00 m
 Resumo de aço
 Concreto: C20, em geral
 Aço: CA-50-A e CA-60-B
 Escala: 1:100
 Data: 05/14

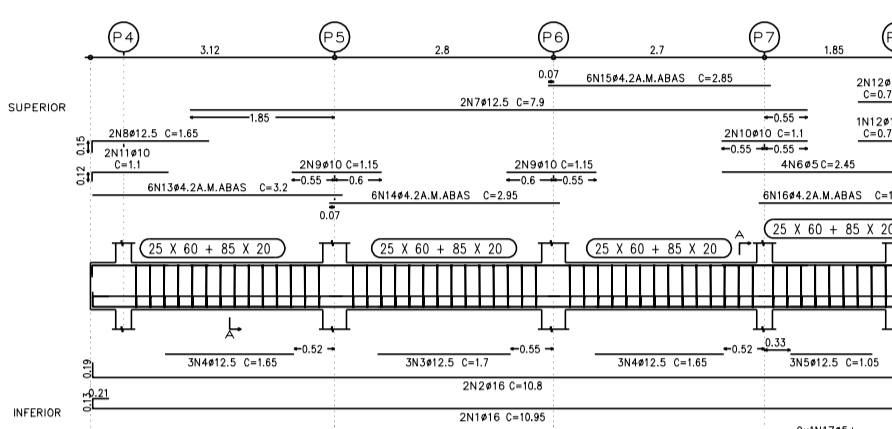
V 1
 Escala 1:100



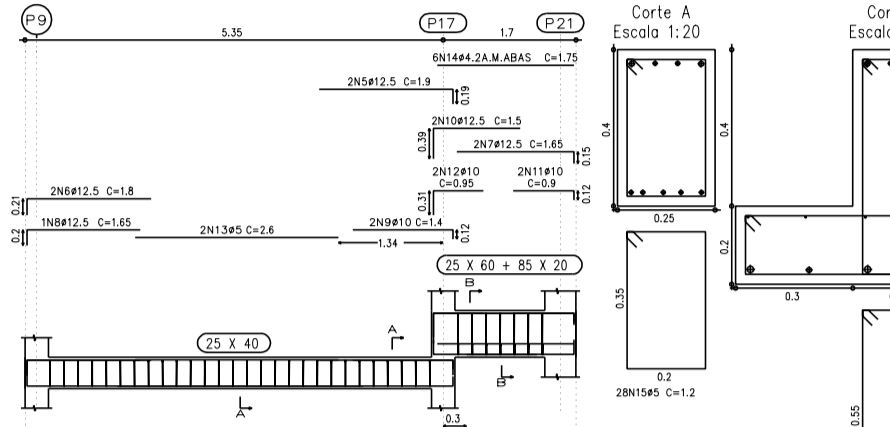
V 2
 Escala 1:100



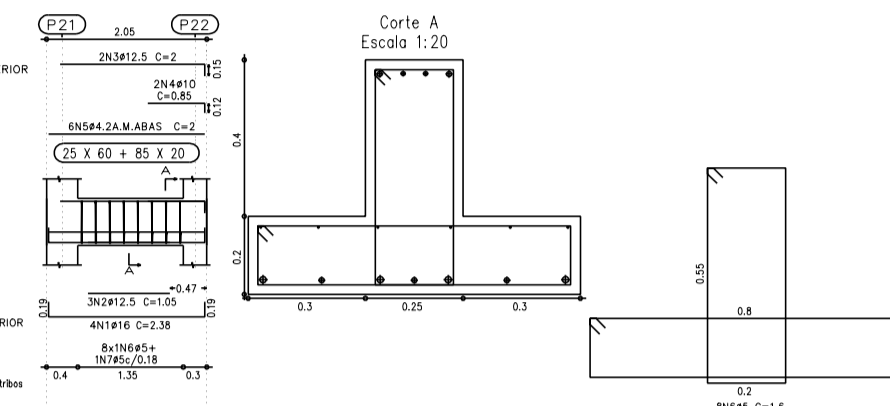
V 3
 Escala 1:100



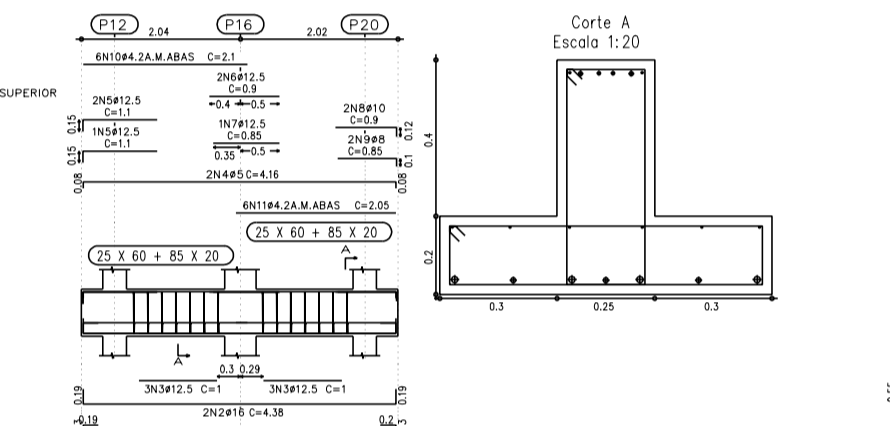
V 4
 Escala 1:100



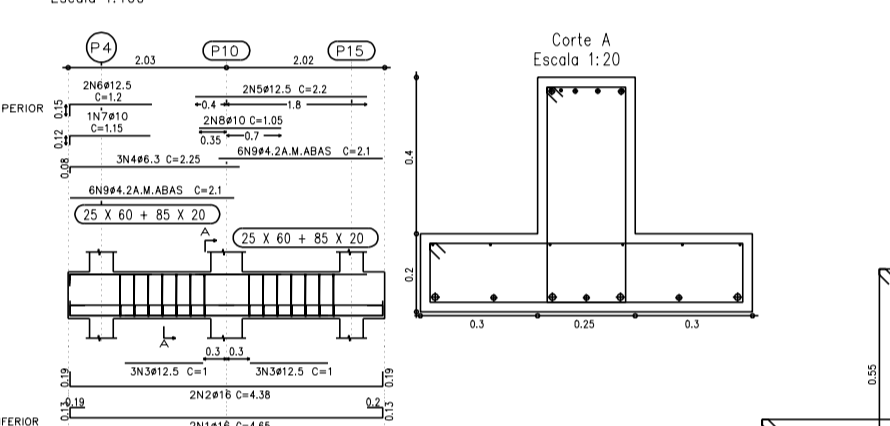
V 5
 Escala 1:100



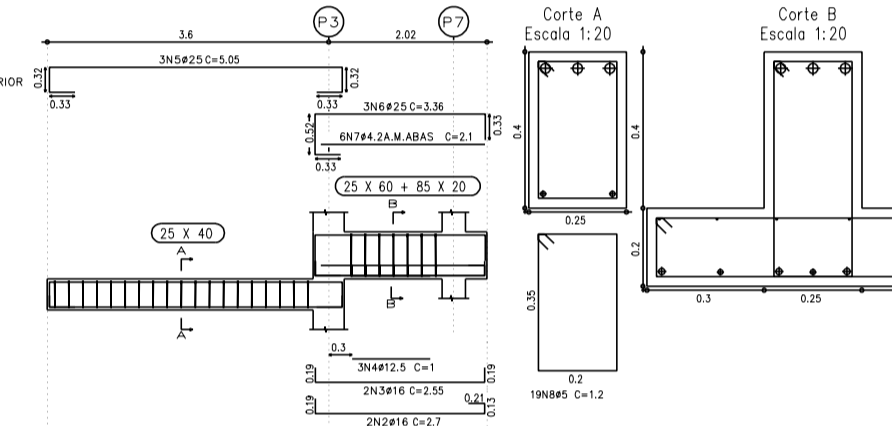
V 6
 Escala 1:100



V 7
 Escala 1:100



V 8
 Escala 1:100



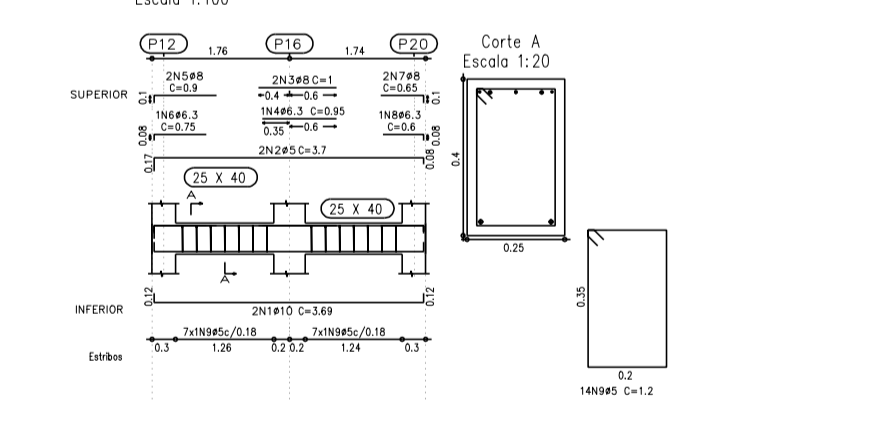
Resumo Aço	Comp. total (m)	Peso+10% (kg)	Total
CA-50-A #6.3	6.8	2	
#10	65.9	46	
#12.5	165.8	179	
#16	183.7	317	
CA-60-B #6.2	201.8	311	654
#5	749.7	129	160
Total			814

Elemento	Pos	Dim	Comp (cm)	Comp (cm)	Comp (cm)	CA-50-A (kg)	CA-60-B (kg)	Total (kg)
V 1	1	#10	12	800	12	844	184	1028
V 1	2	#10	12	800	12	844	184	1028
V 1	3	#10	12	800	12	844	184	1028
V 1	4	#10	12	800	12	844	184	1028
V 1	5	#10	12	800	12	844	184	1028
V 1	6	#10	12	800	12	844	184	1028
V 1	7	#10	12	800	12	844	184	1028
V 1	8	#10	12	800	12	844	184	1028
V 1	9	#10	12	800	12	844	184	1028
V 1	10	#10	12	800	12	844	184	1028
V 1	11	#10	12	800	12	844	184	1028
V 1	12	#10	12	800	12	844	184	1028
V 1	13	#10	12	800	12	844	184	1028
V 1	14	#10	12	800	12	844	184	1028
V 1	15	#10	12	800	12	844	184	1028
V 1	16	#10	12	800	12	844	184	1028
V 1	17	#10	12	800	12	844	184	1028
V 1	18	#10	12	800	12	844	184	1028
V 1	19	#10	12	800	12	844	184	1028
V 1	20	#10	12	800	12	844	184	1028
V 1	21	#10	12	800	12	844	184	1028
V 1	22	#10	12	800	12	844	184	1028
V 1	23	#10	12	800	12	844	184	1028
V 1	24	#10	12	800	12	844	184	1028
V 1	25	#10	12	800	12	844	184	1028
V 1	26	#10	12	800	12	844	184	1028
V 1	27	#10	12	800	12	844	184	1028
V 1	28	#10	12	800	12	844	184	1028
V 1	29	#10	12	800	12	844	184	1028
V 1	30	#10	12	800	12	844	184	1028
V 1	31	#10	12	800	12	844	184	1028
V 1	32	#10	12	800	12	844	184	1028
V 1	33	#10	12	800	12	844	184	1028
V 1	34	#10	12	800	12	844	184	1028
V 1	35	#10	12	800	12	844	184	1028
V 1	36	#10	12	800	12	844	184	1028
V 1	37	#10	12	800	12	844	184	1028
V 1	38	#10	12	800	12	844	184	1028
V 1	39	#10	12	800	12	844	184	1028
V 1	40	#10	12	800	12	844	184	1028
V 1	41	#10	12	800	12	844	184	1028
V 1	42	#10	12	800	12	844	184	1028
V 1	43	#10	12	800	12	844	184	1028
V 1	44	#10	12	800	12	844	184	1028
V 1	45	#10	12	800	12	844	184	1028
V 1	46	#10	12	800	12	844	184	1028
V 1	47	#10	12	800	12	844	184	1028
V 1	48	#10	12	800	12	844	184	1028
V 1	49	#10	12	800	12	844	184	1028
V 1	50	#10	12	800	12	844	184	1028
V 1	51	#10	12	800	12	844	184	1028
V 1	52	#10	12	800	12	844	184	1028
V 1	53	#10	12	800	12	844	184	1028
V 1	54	#10	12	800	12	844	184	1028
V 1	55	#10	12	800	12	844	184	1028
V 1	56	#10	12	800	12	844	184	1028
V 1	57	#10	12	800	12	844	184	1028
V 1	58	#10	12	800	12	844	184	1028
V 1	59	#10	12	800	12	844	184	1028
V 1	60	#10	12	800	12	844	184	1028
V 1	61	#10	12	800	12	844	184	1028
V 1	62	#10	12	800	12	844	184	1028
V 1	63	#10	12	800	12	844	184	1028
V 1	64	#10	12	800	12	844	184	1028
V 1	65	#10	12	800	12	844	184	1028
V 1	66	#10	12	800	12	844	184	1028
V 1	67	#10	12	800	12	844	184	1028
V 1	68	#10	12	800	12	844	184	1028
V 1	69	#10	12	800	12	844	184	1028
V 1	70	#10	12	800	12	844	184	1028
V 1	71	#10	12	800	12	844	184	1028
V 1	72	#10	12	800	12	844	184	1028
V 1	73	#10	12	800	12	844	184	1028
V 1	74	#10	12	800	12	844	184	1028
V 1	75	#10	12	800	12	844	184	1028
V 1	76	#10	12	800	12	844	184	1028
V 1	77	#10	12	800	12	844	184	1028
V 1	78	#10	12	800	12	844	184	1028
V 1	79	#10	12	800	12	844	184	1028
V 1	80	#10	12	800	12	844	184	1028
V 1	81	#10	12	800	12	844	184	1028
V 1	82	#10	12	800	12	844	184	1028
V 1	83	#10	12	800	12	844	184	1028
V 1	84	#10	12	800	12	844	184	1028
V 1	85	#10	12	800	12	844	184	1028
V 1	86	#10	12	800	12	844	184	1028
V 1	87	#10	12	800	12	844	184	1028
V 1	88	#10	12	800	12	844	184	1028
V 1	89	#10	12	800	12	844	184	1028
V 1	90	#10	12	800	12	844	184	1028
V 1	91	#10	12	800	12	844	184	1028
V 1	92	#10	12	800	12	844	184	1028
V 1	93	#10	12	800	12	844	184	1028
V 1	94	#10	12	800	12	844	184	1028
V 1	95	#10	12	800	12	844	184	1028
V 1	96	#10	12	800	12	844	184	1028
V 1	97	#10	12	800	12	844	184	1028
V 1	98	#10	12	800	12	844	184	1028
V 1	99	#10	12	800	12	844	184	1028
V 1	100	#10	12	800	12	844	184	1028

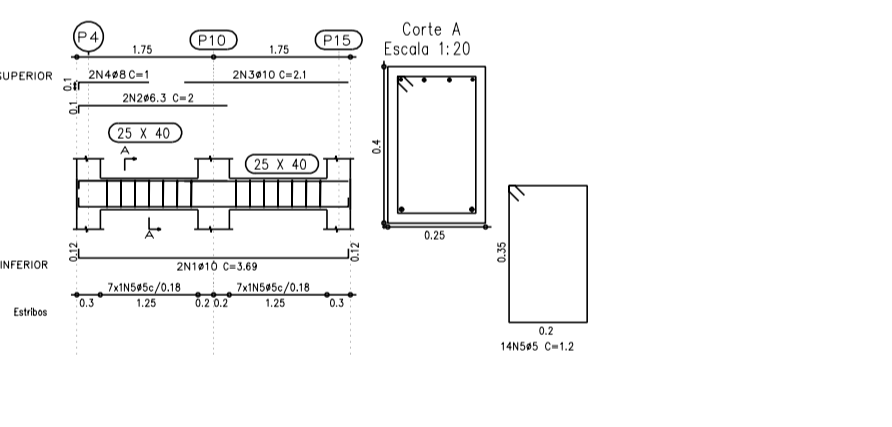
NÍVEL 1.10
 Desenho de vigas
 Concreto: C20, em geral
 Aço: CA-50-A e CA-60-B
 Escala vigas: 1:100
 Escala seções: 1:20

Resumo Aço	Comp. total (m)	Peso+10% (kg)	Total
NÍVEL 1.10	9.1	2	
CA-50-A #6.3	42.9	19	
#10	144.2	100	
#12.5	10.1	11	
#16	10.8	19	151
CA-60-B #5	100.7	5.7	223
Total			203

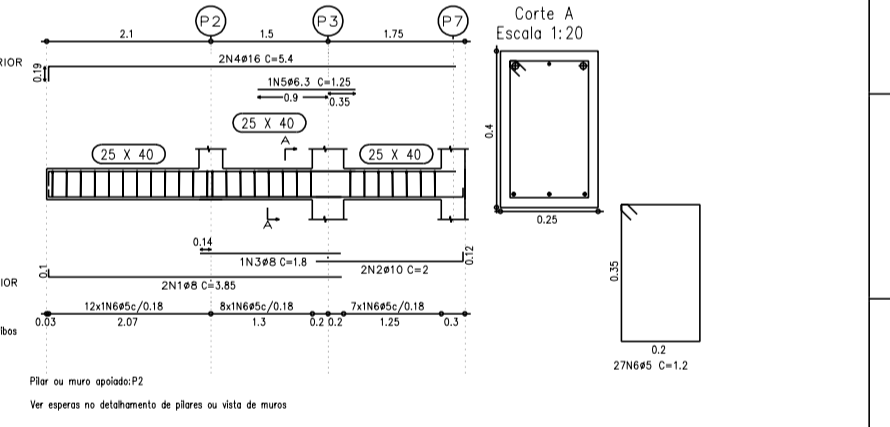
V 5
 Escala 1:100



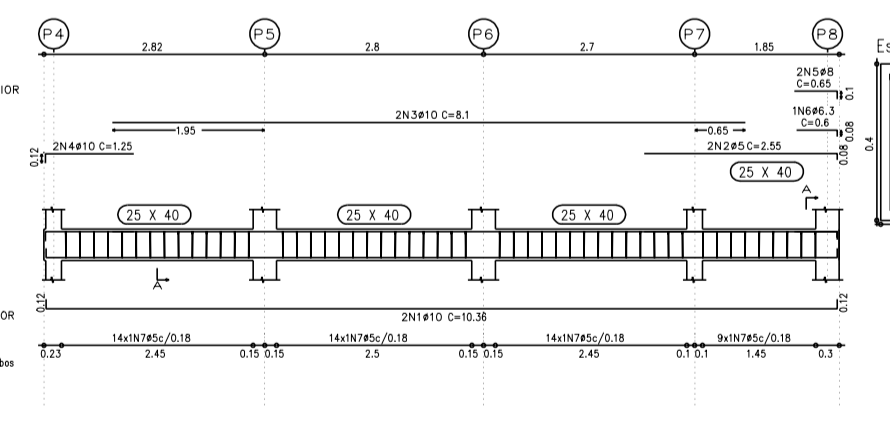
V 6
 Escala 1:100



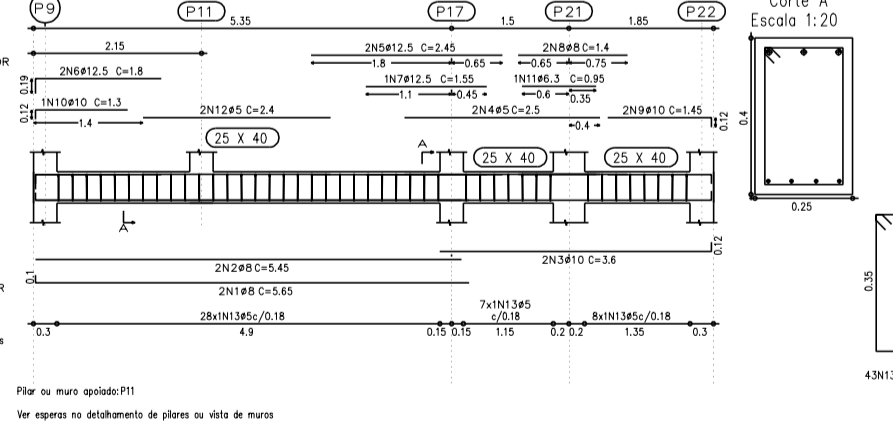
V 7
 Escala 1:100



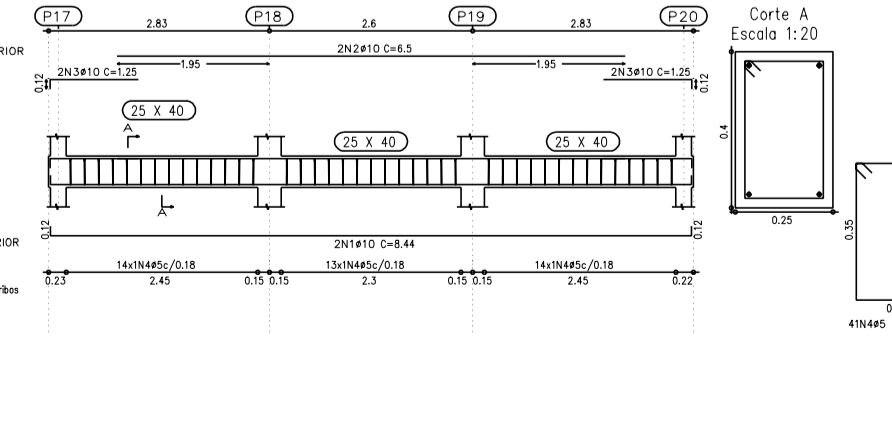
V 3
 Escala 1:100



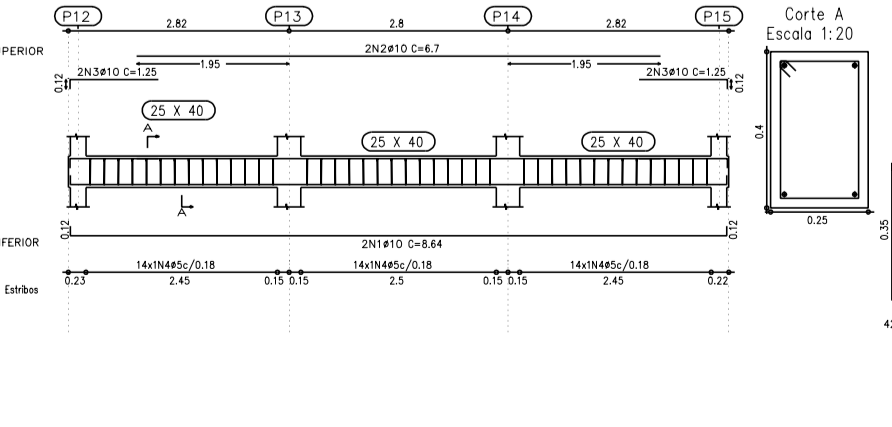
V 4
 Escala 1:100



V 1
 Escala 1:100



V 2
 Escala 1:100



PROJETO CIVIL
TÍTULO: ARMADURAS, VIGAS BALDRAME E NÍVEL 1.10 M
CLIENTE: PREFEITURA MUNICIPAL DE SÃO JOÃO DA BOA VISTA
EMPREENDIMENTO: ESTAÇÃO DE TRANSBORDO DE SÃO JOÃO DA BOA VISTA
 Rua: Flávio Peixoto, N° 40
 Centro
 CEP: 14870-370 - Jaboticabal-SP
 Tel: (16) 3202-1446
 ESCALA: INDICADA
 FOLHA: 05/14
 DATA: MAR/2012
 DESENHO: RODOLFO DIAS
 RESPONSÁVEL: PAULO HENRIQUE BELLINGERI
 EMP. CIVIL - CHA. 001919984
 ASSINATURA: