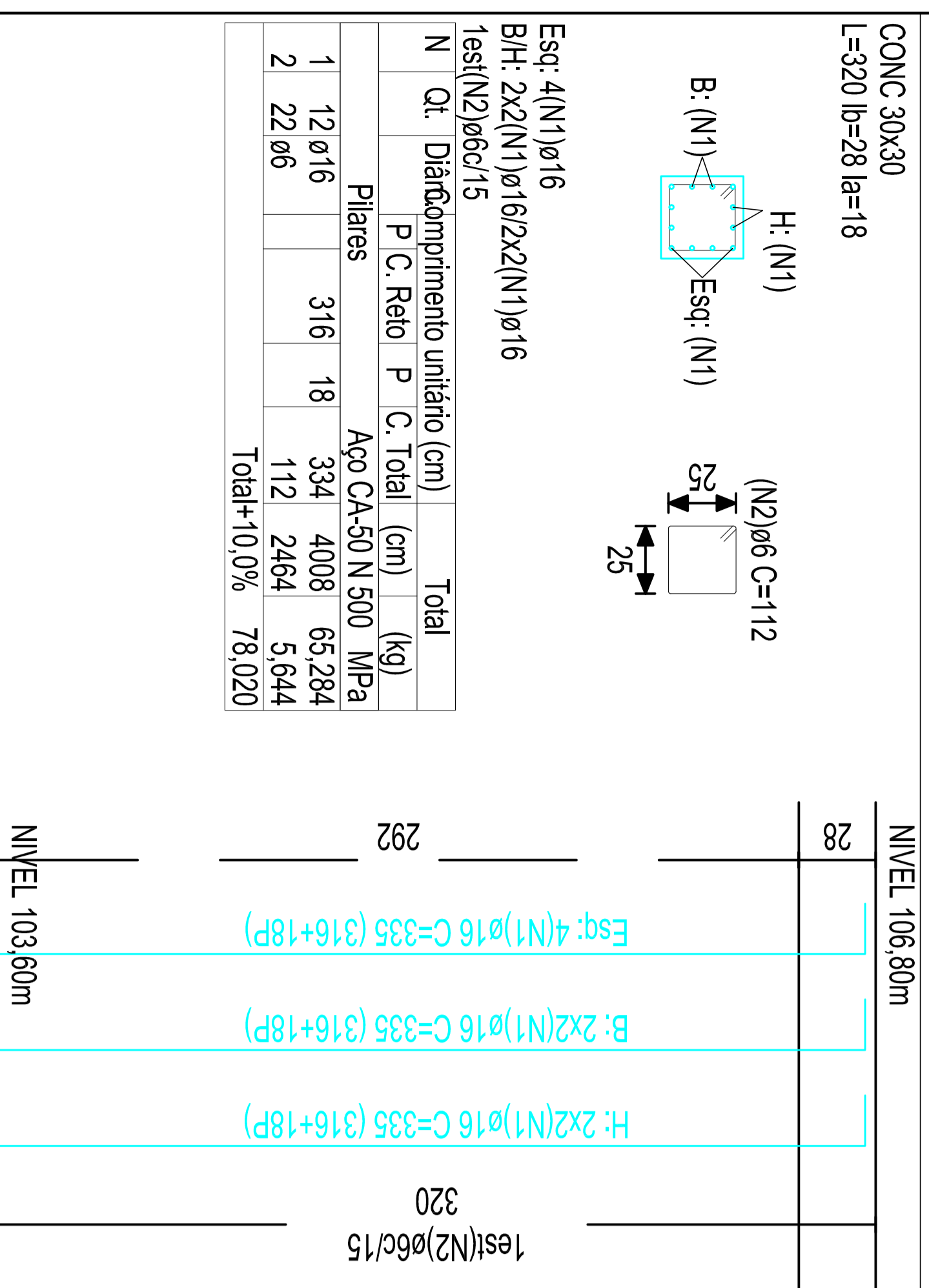
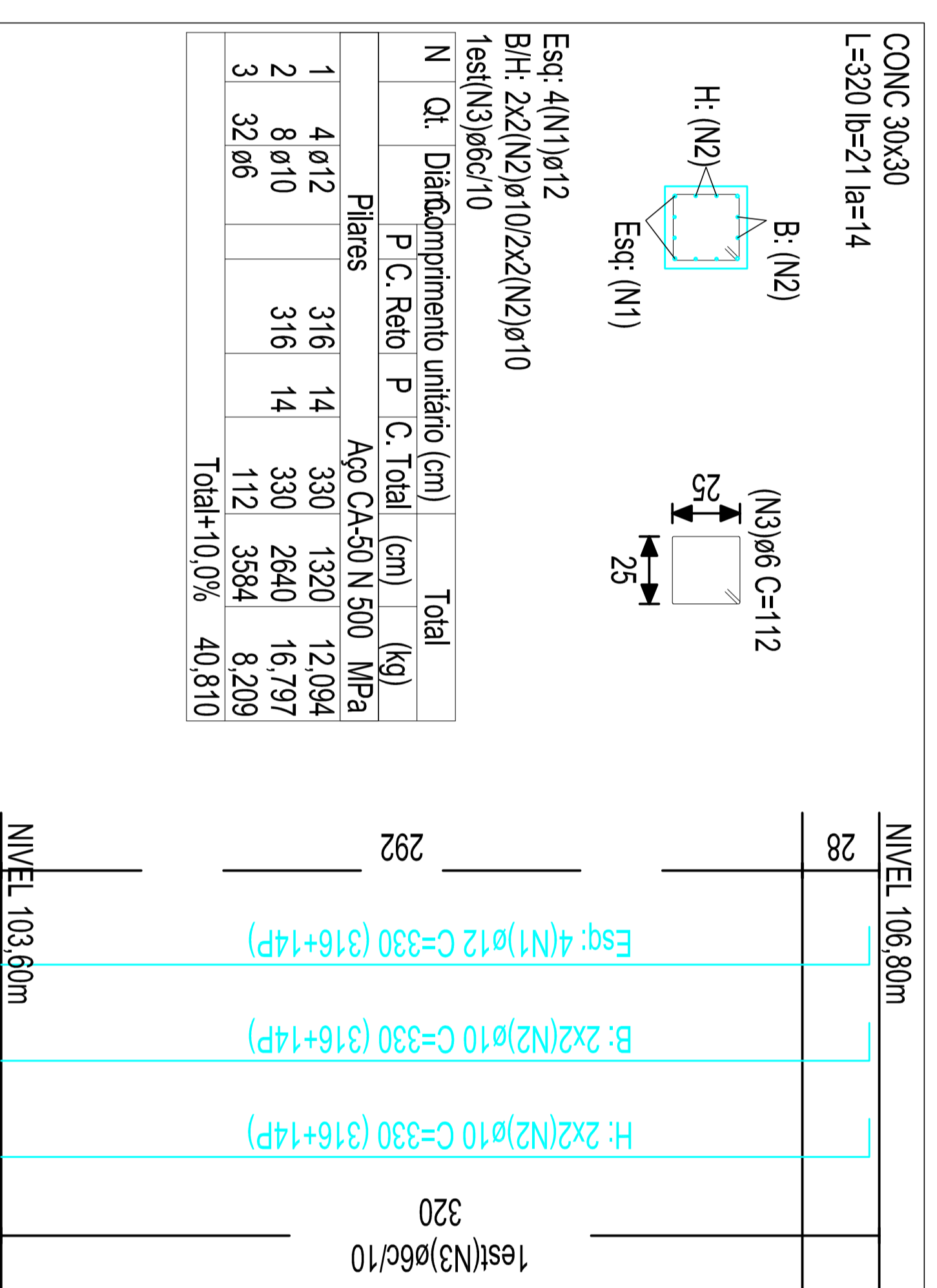


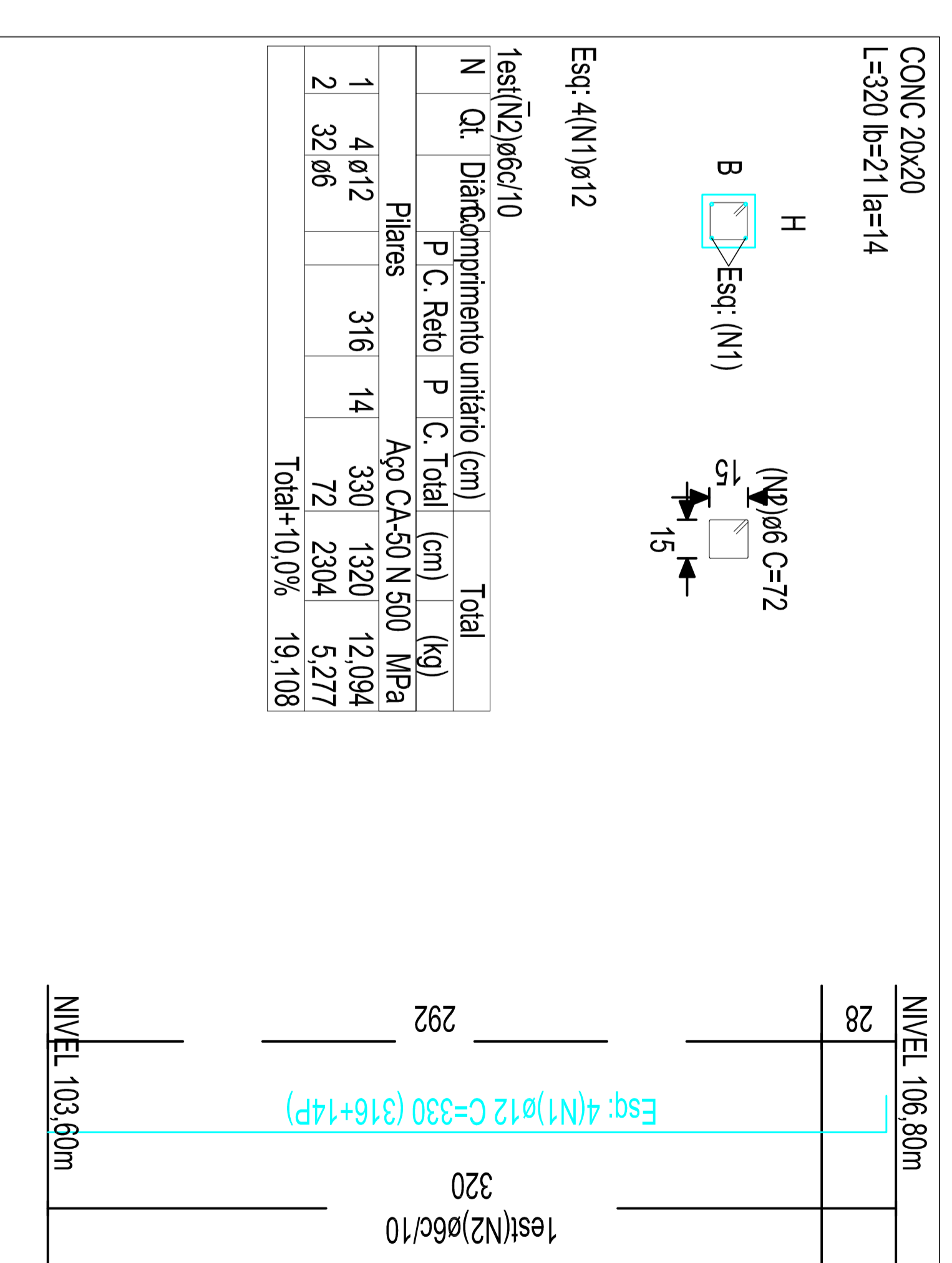
P17 (1x)
(30x30)



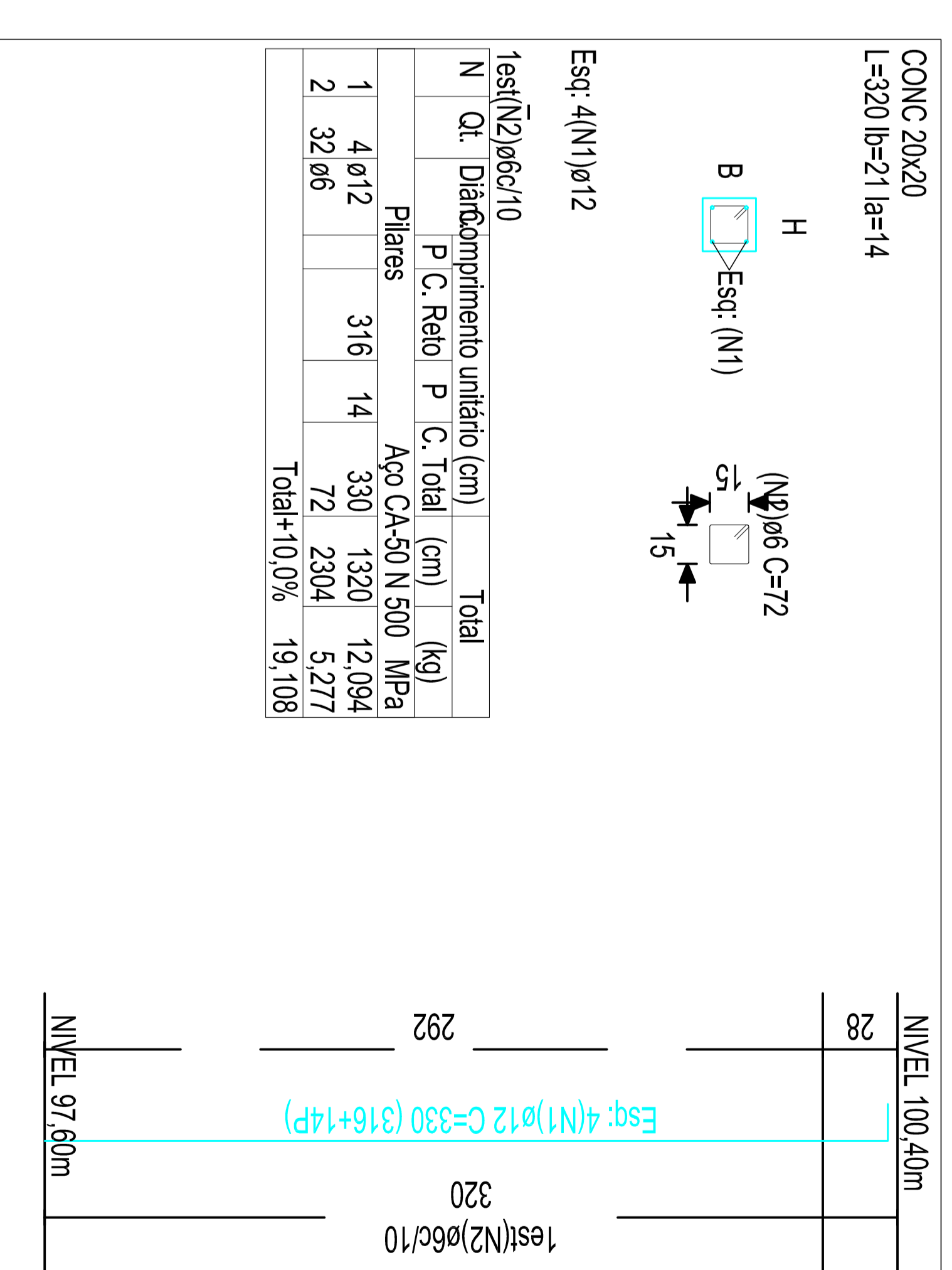
P204=P205=P206=P207=P208=P209=P210=P211 (8x)
(30x30)



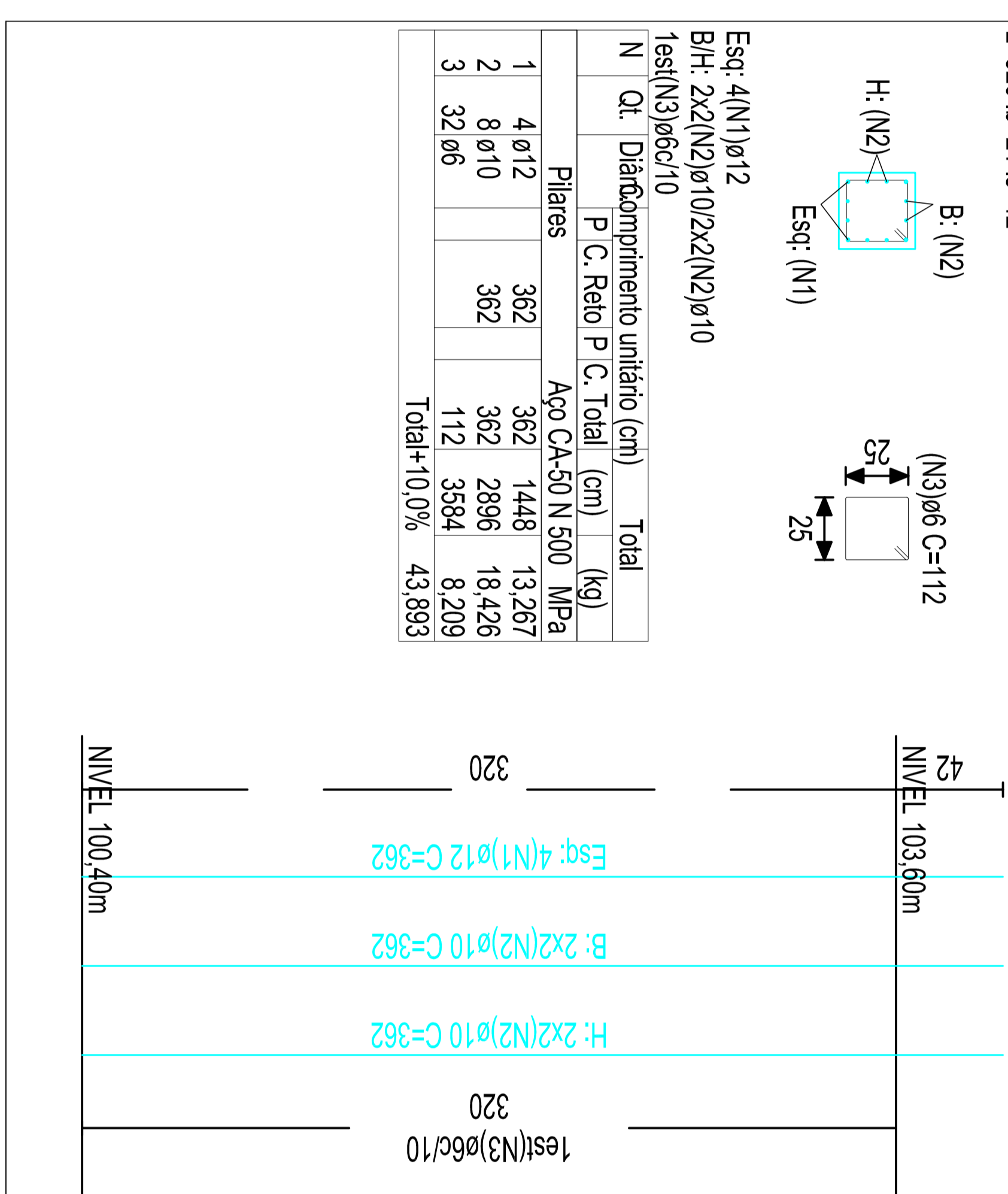
P201=P202=P203 (3x)
(20x20)



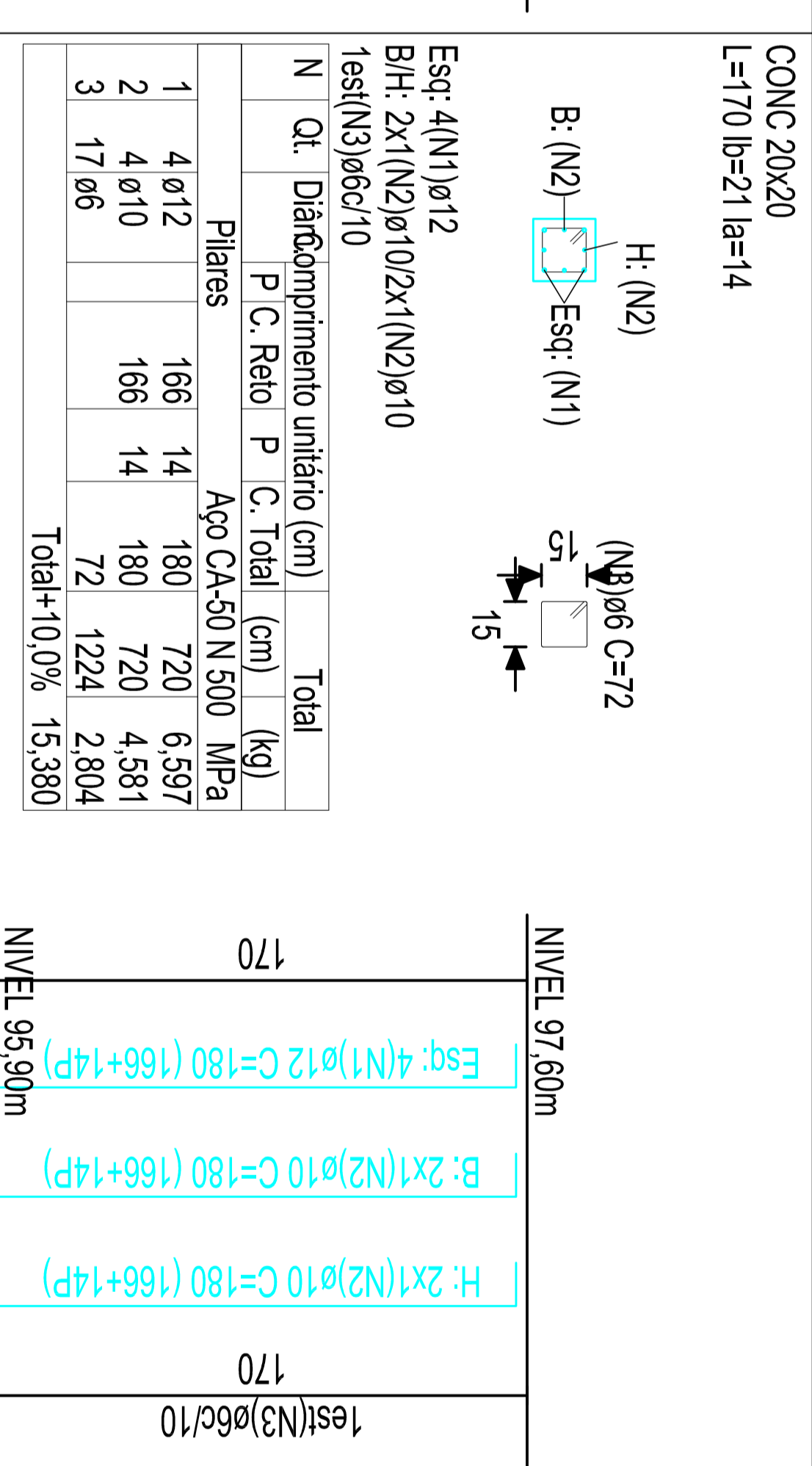
P102=P103 (2x)
(20x20)



P31=P32=P33=P34=P35=P36=P37 (7x)



P24=P25=P26=P27=P29=P30 (6x)

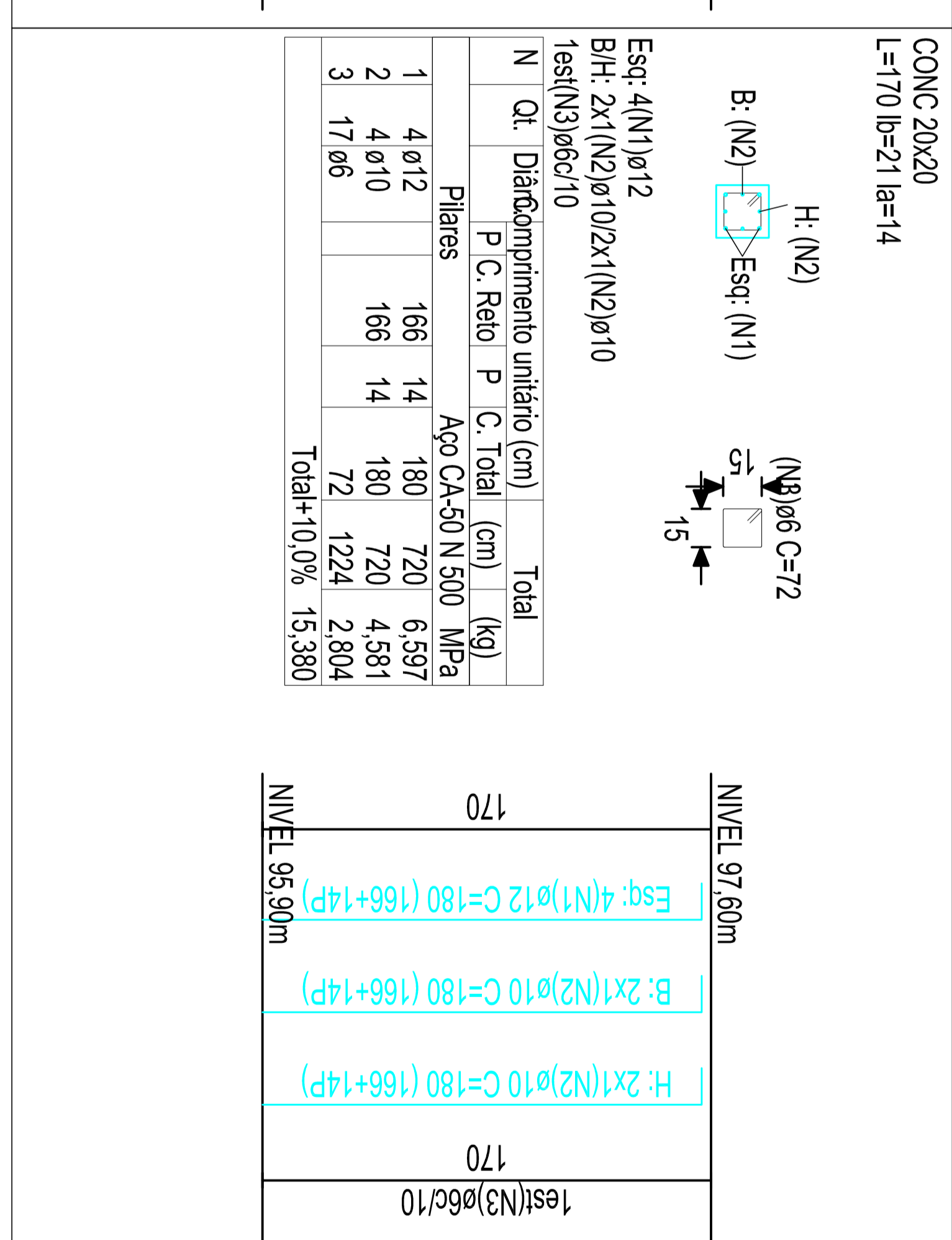
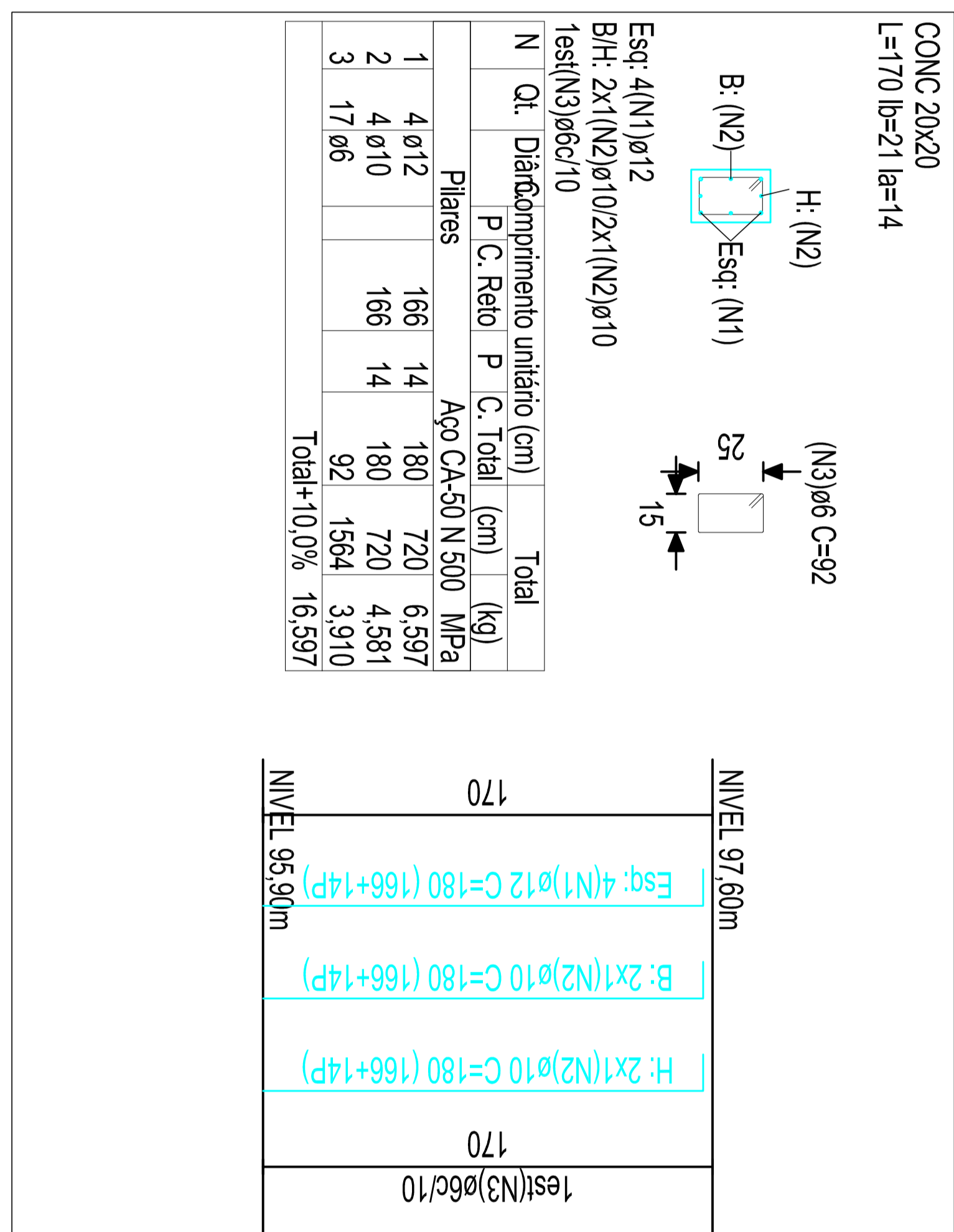


PELVAS

TIPO	QUANTIDADE	VALOR
1	7	0,10
2	7	0,20
3	7	0,30
4	7	0,40
5	7	0,50
6	7	0,60
7	7	0,70
8	7	0,80
9	7	0,90
10	7	1,00

ARMADURAS - CIMENTOS

QUANTIDADE	VALOR
0,20	



INSTITUTO DE PREVIDÊNCIA DOS SERVIDORES PÚBLICOS MUNICIPAIS

CONSTRUÇÃO DE SEDE

RUA SEMADOR SARAVIA, 136 - CENTRO

SÃO JÃO DA BOA VISTA - SP

MARÇO/2011

PROJETO EXECUTIVO

ESTRUTURAL

ARMADURA DOS PILARES

PROJETO EXECUTIVO

ESTRUTURAL

ARMADURA DOS PILARES

17

2011-008