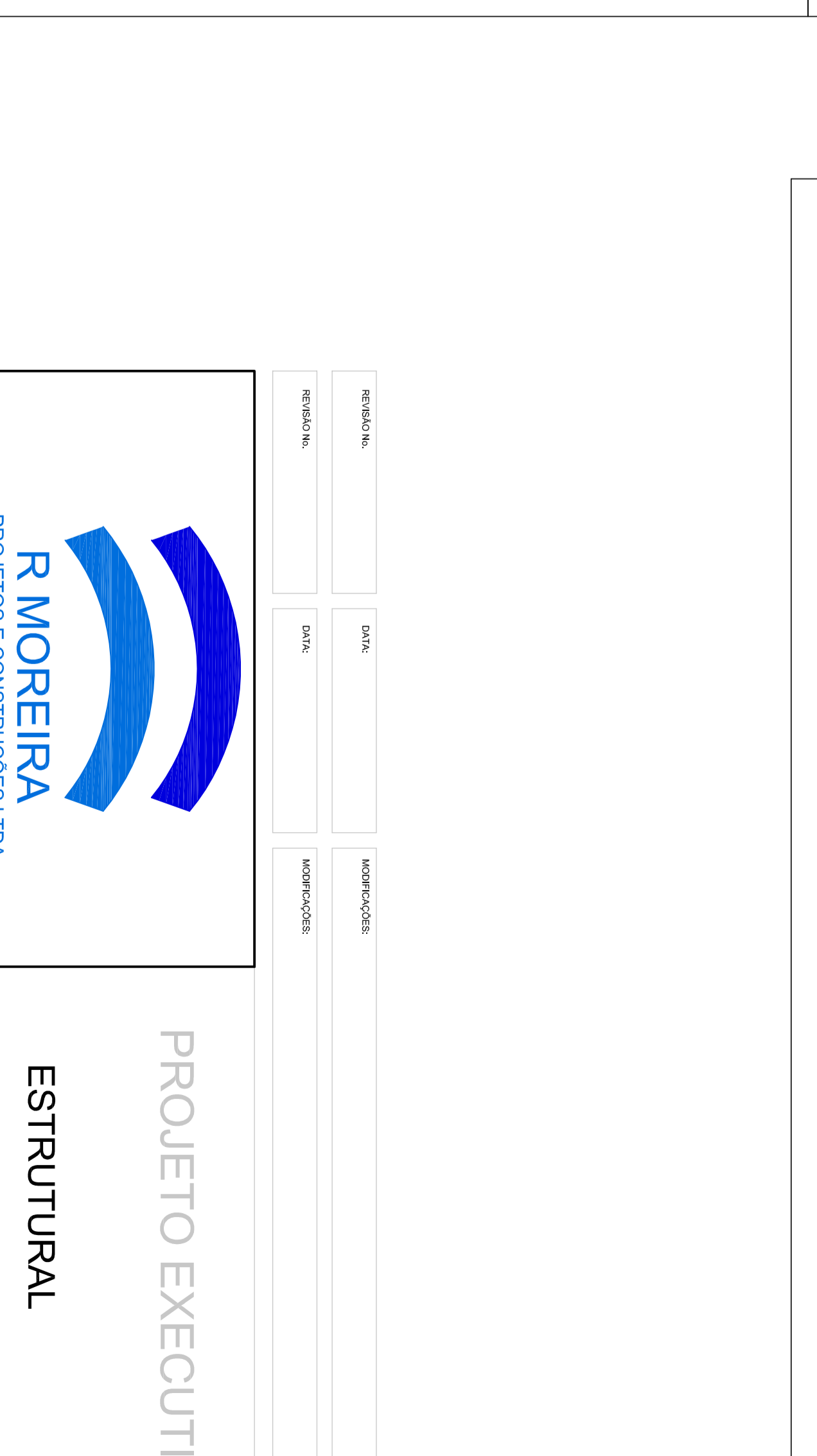
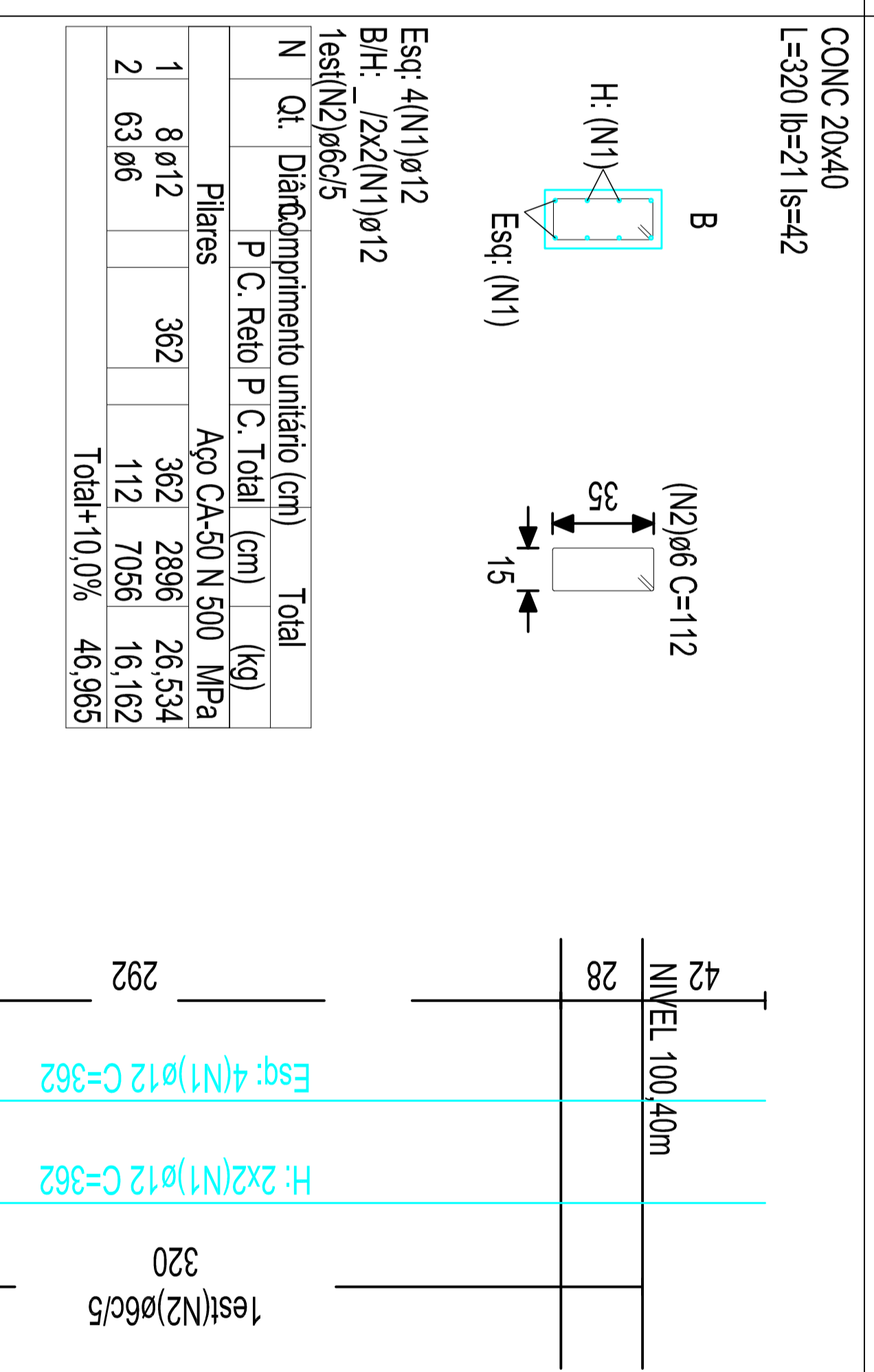
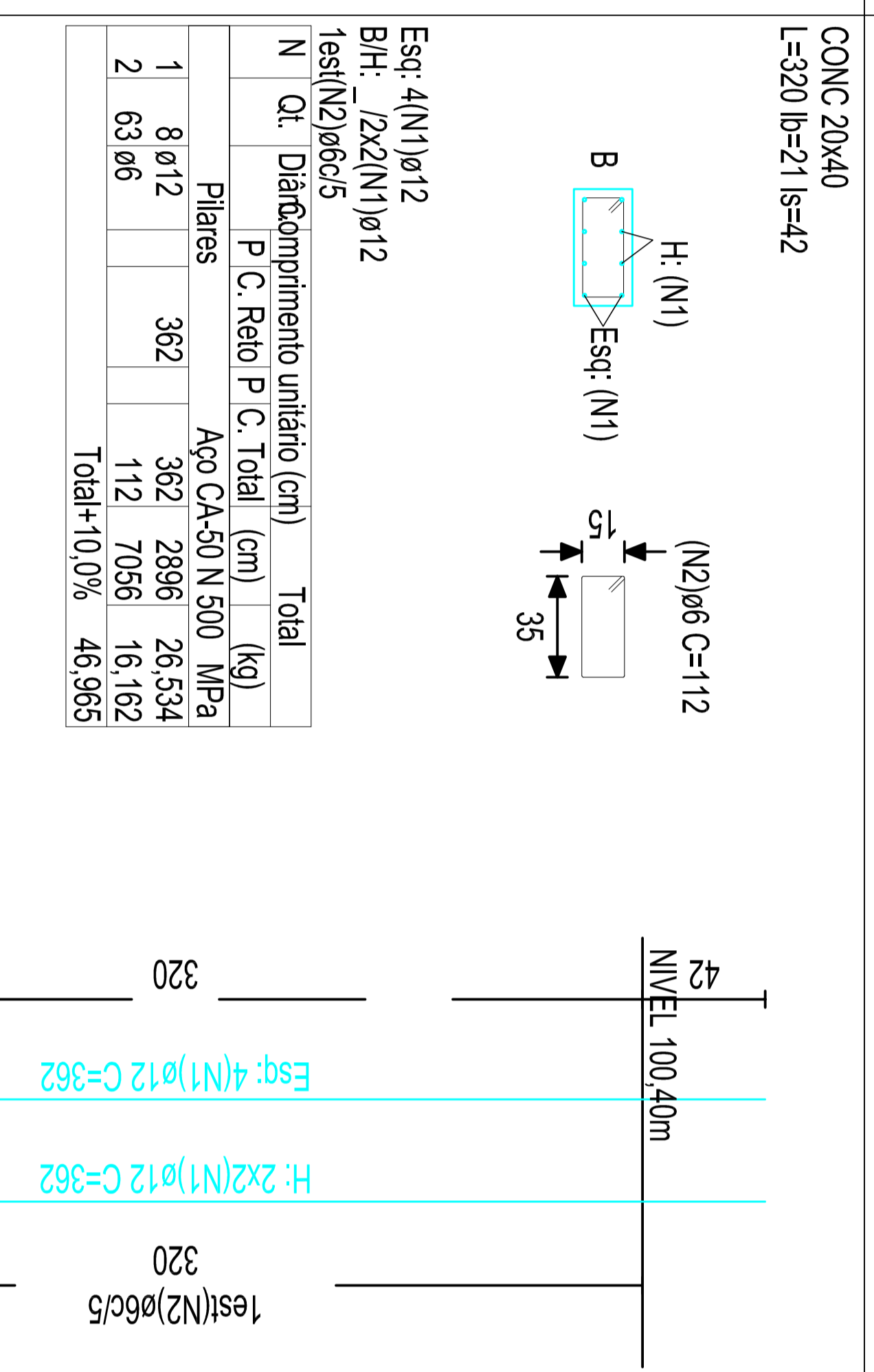
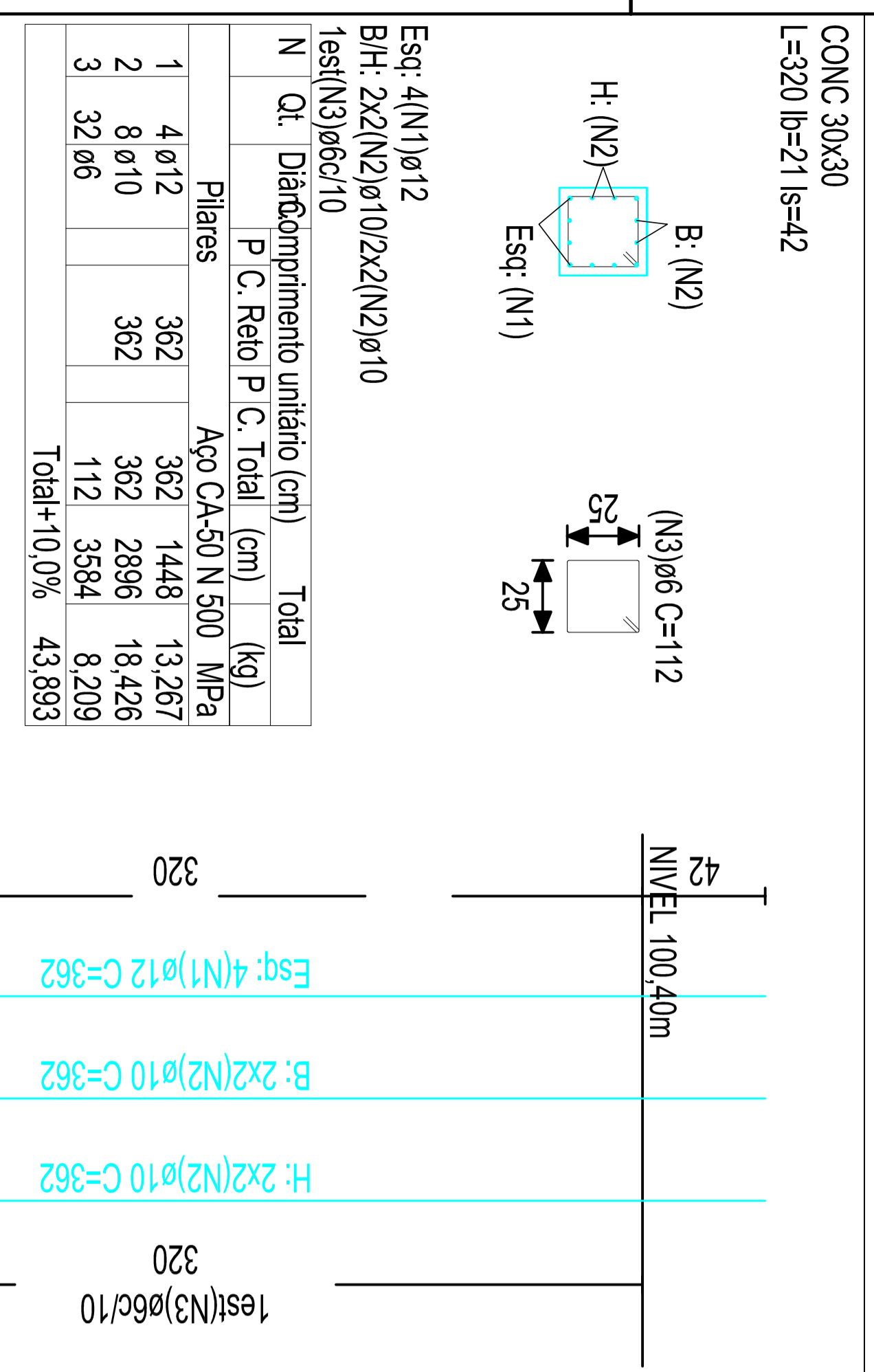
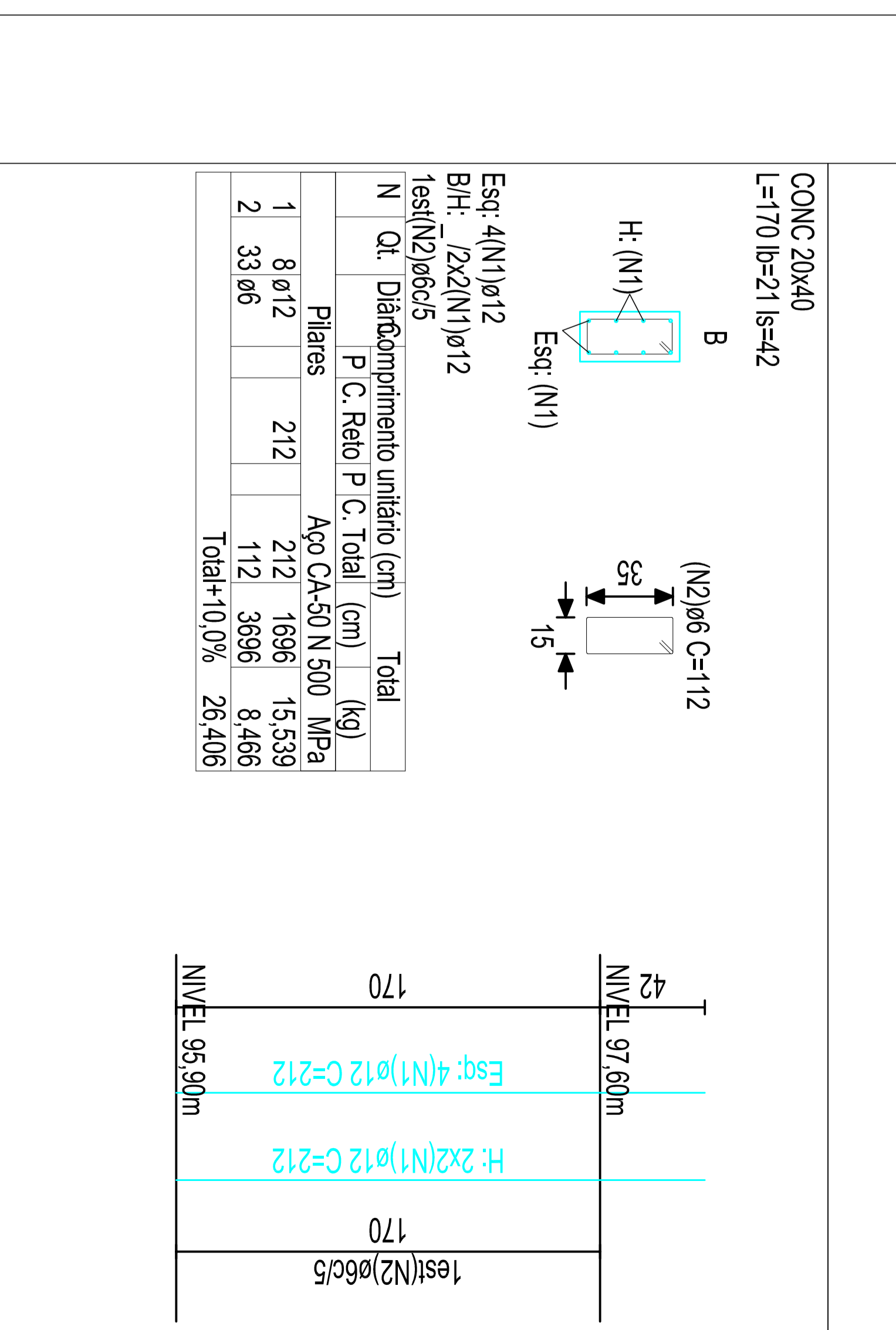
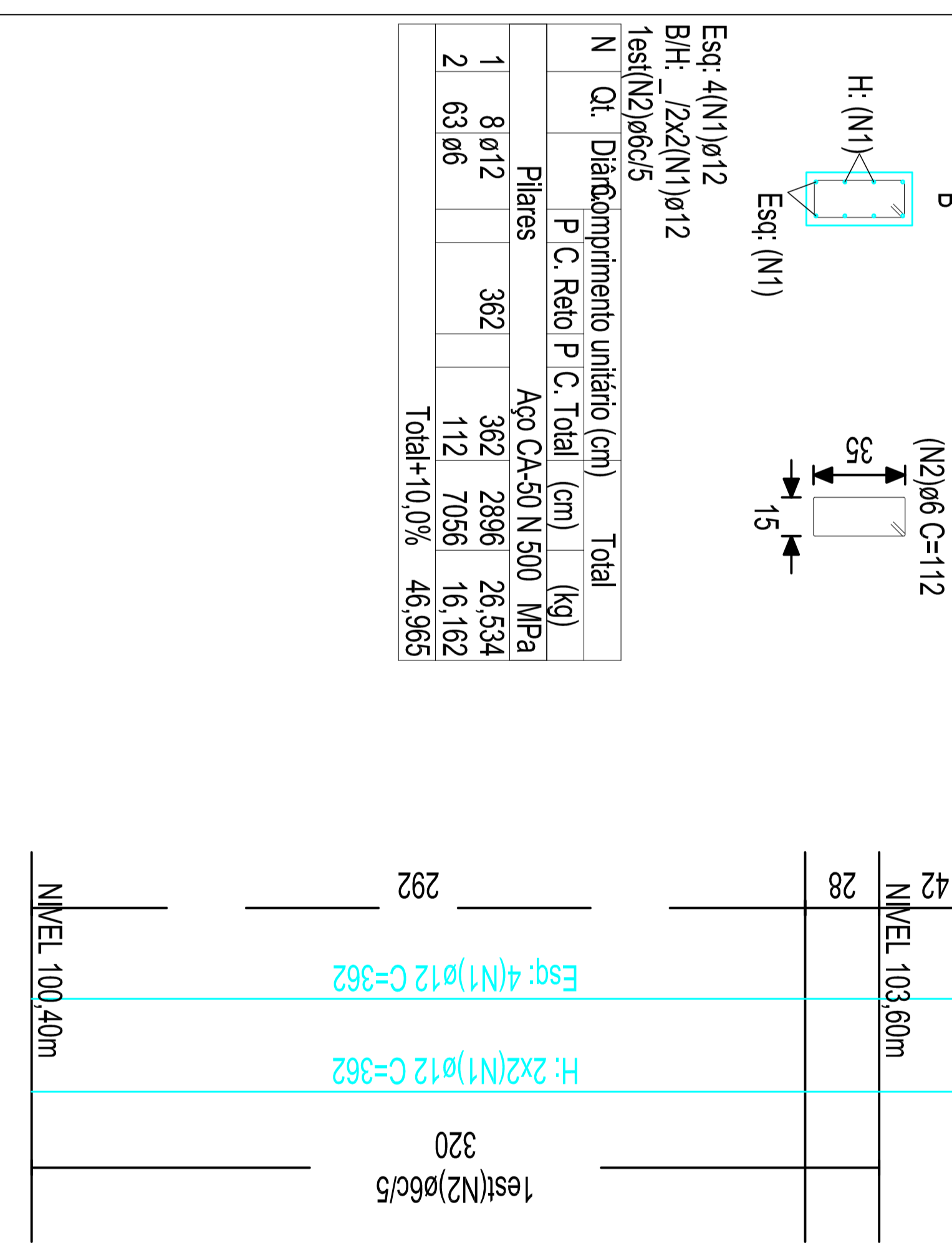
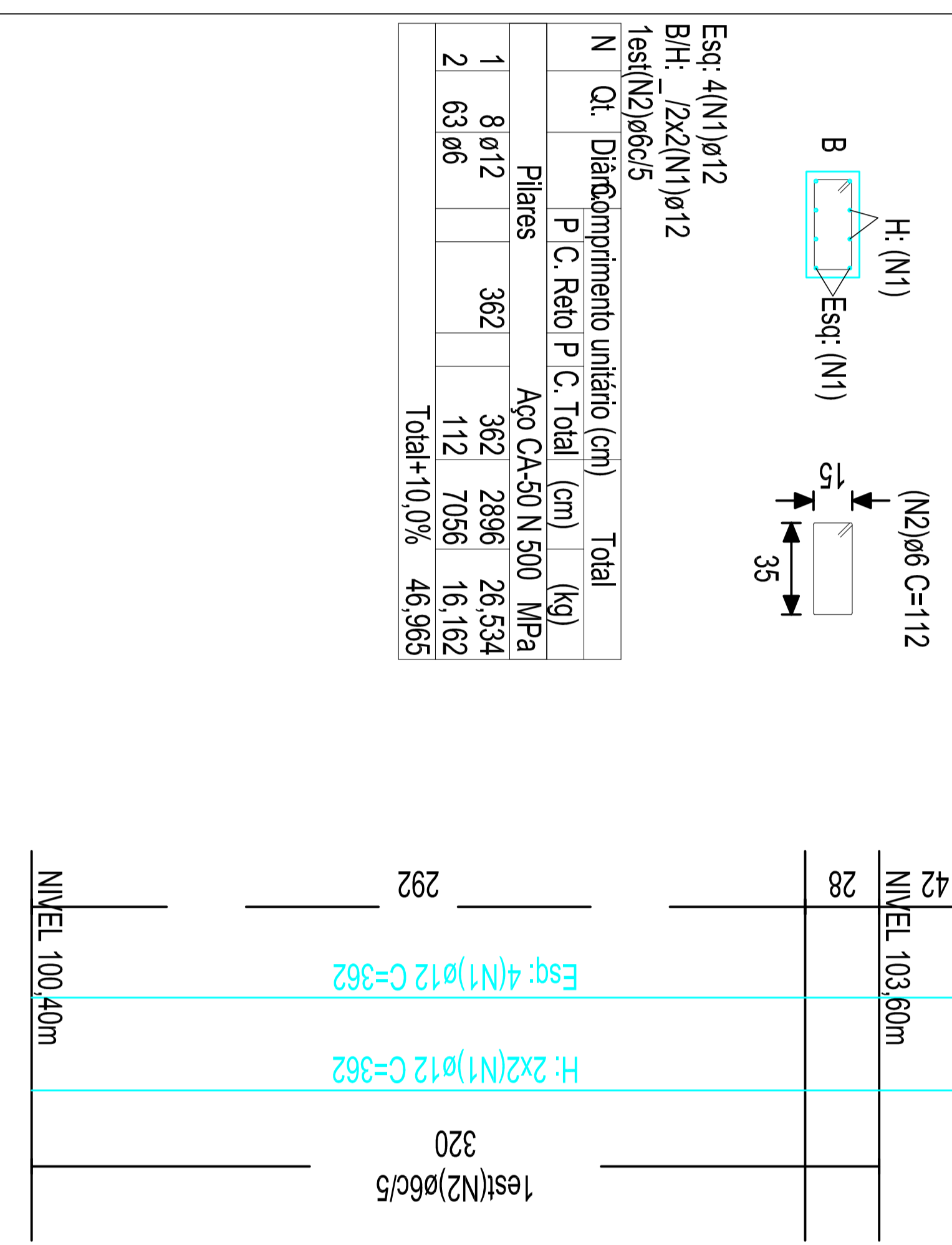
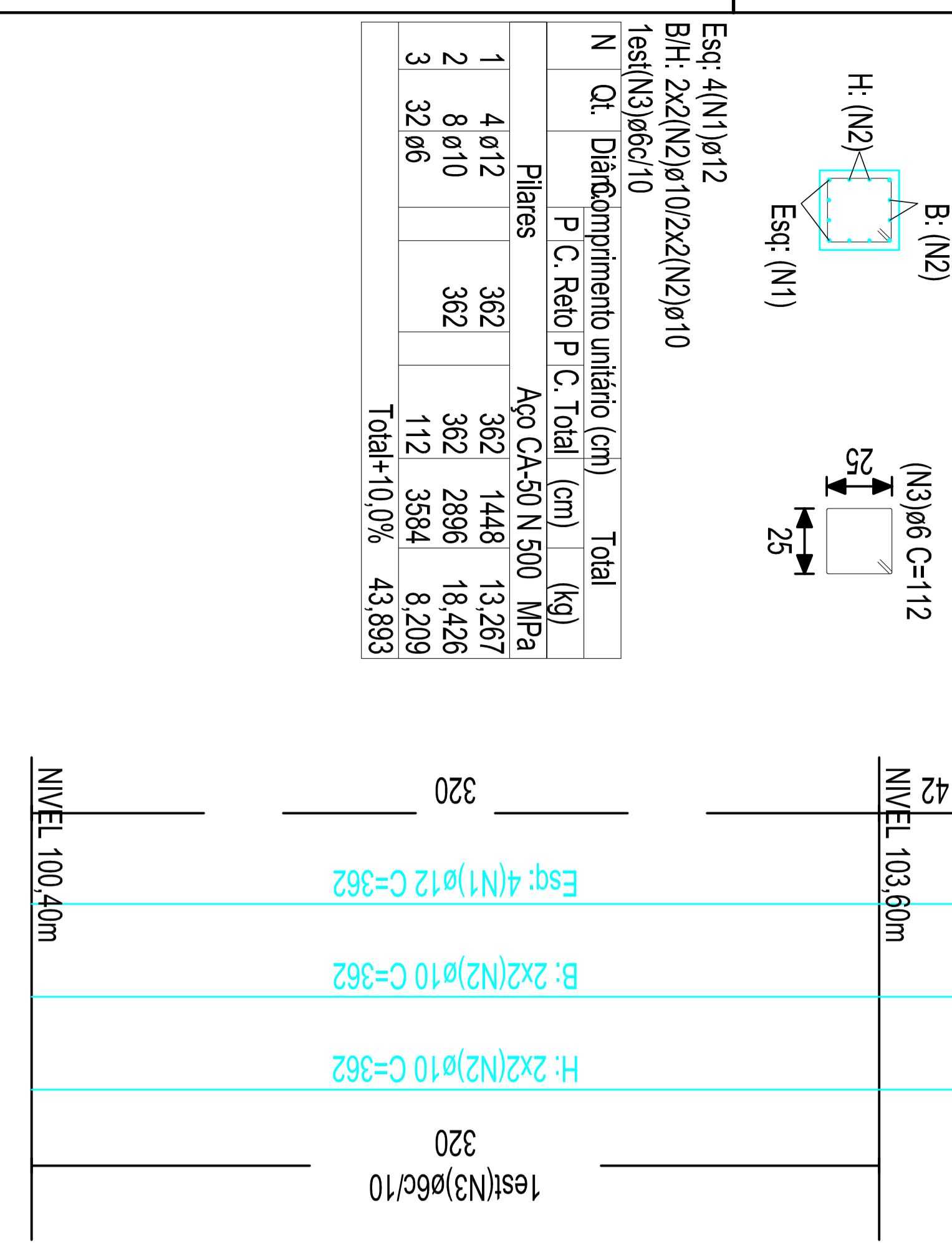
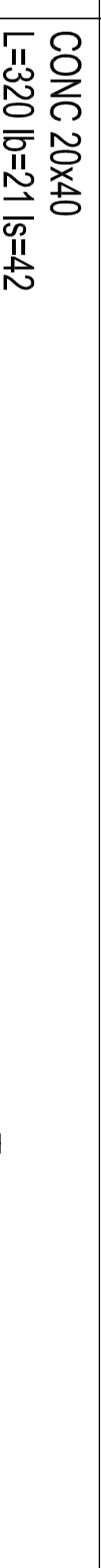
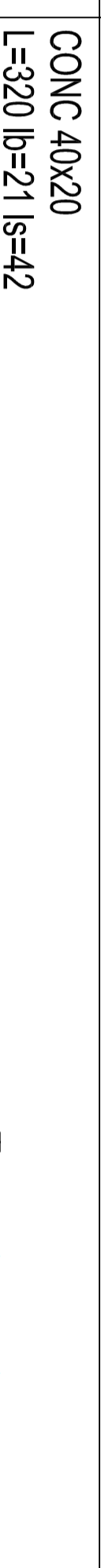
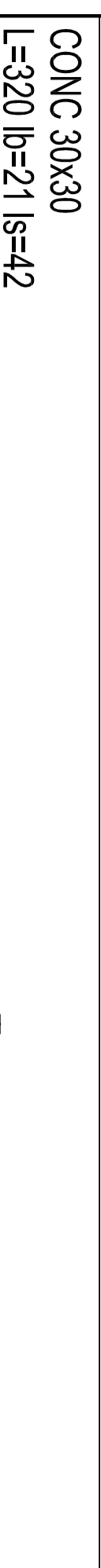
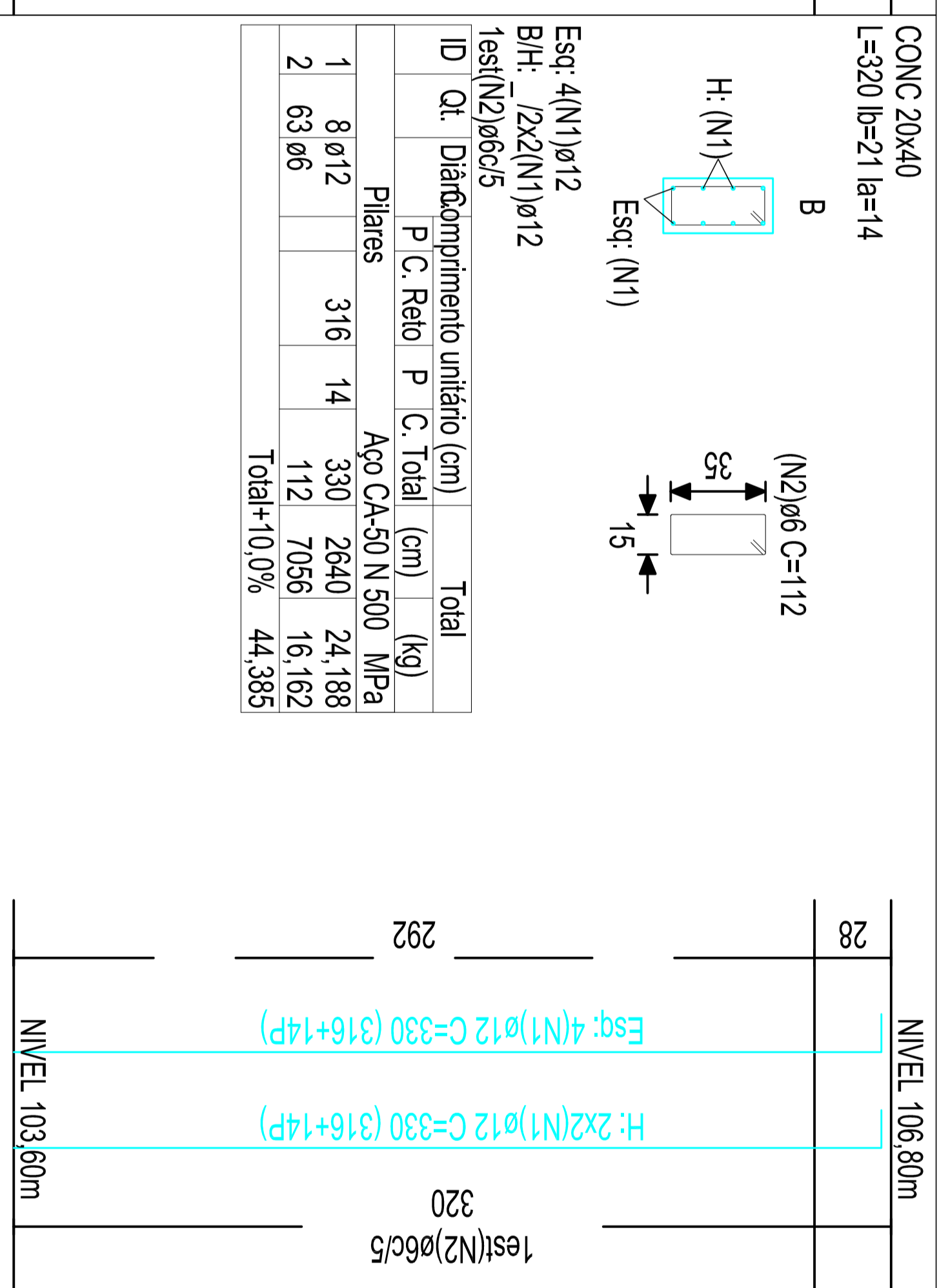
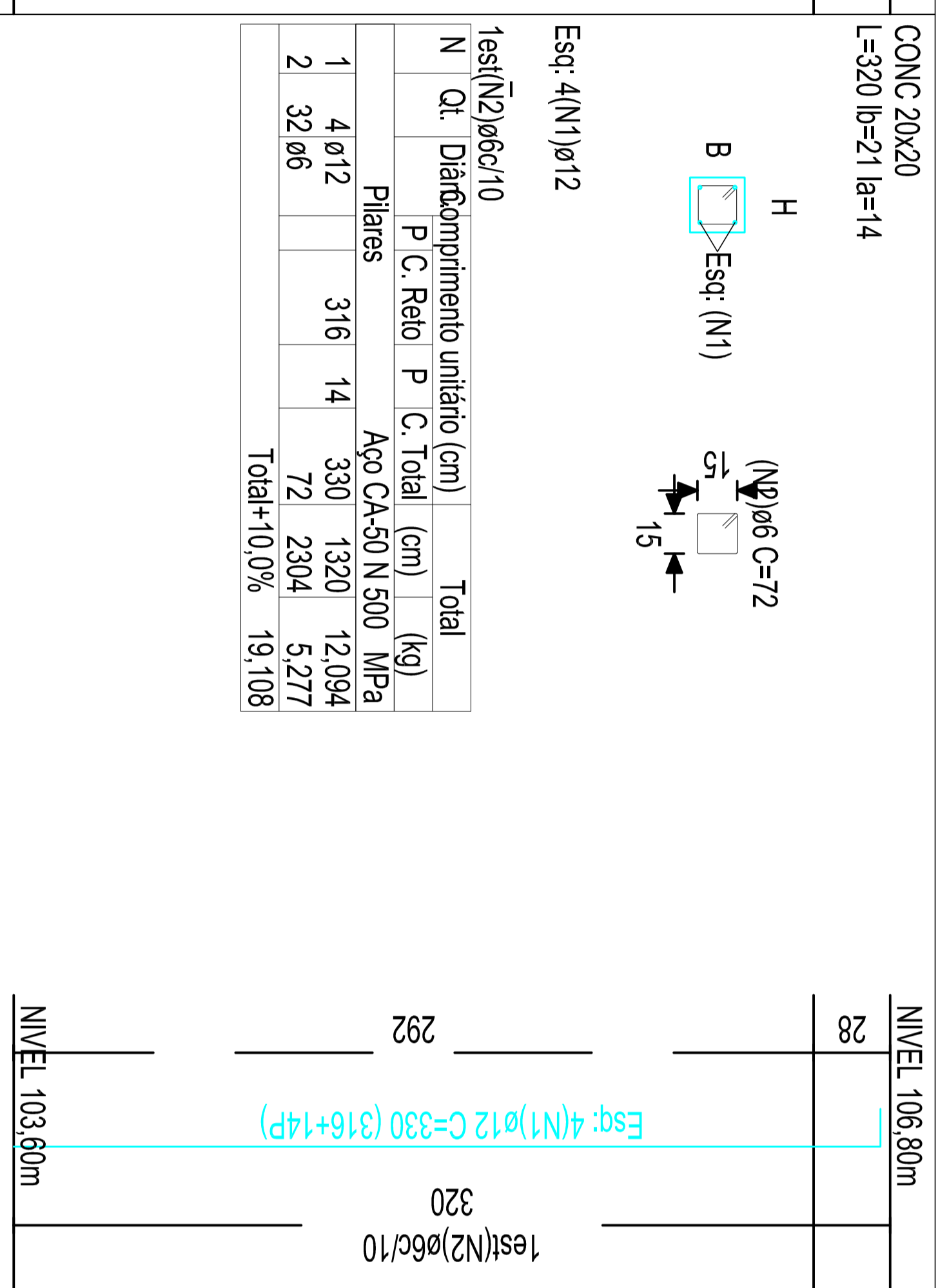
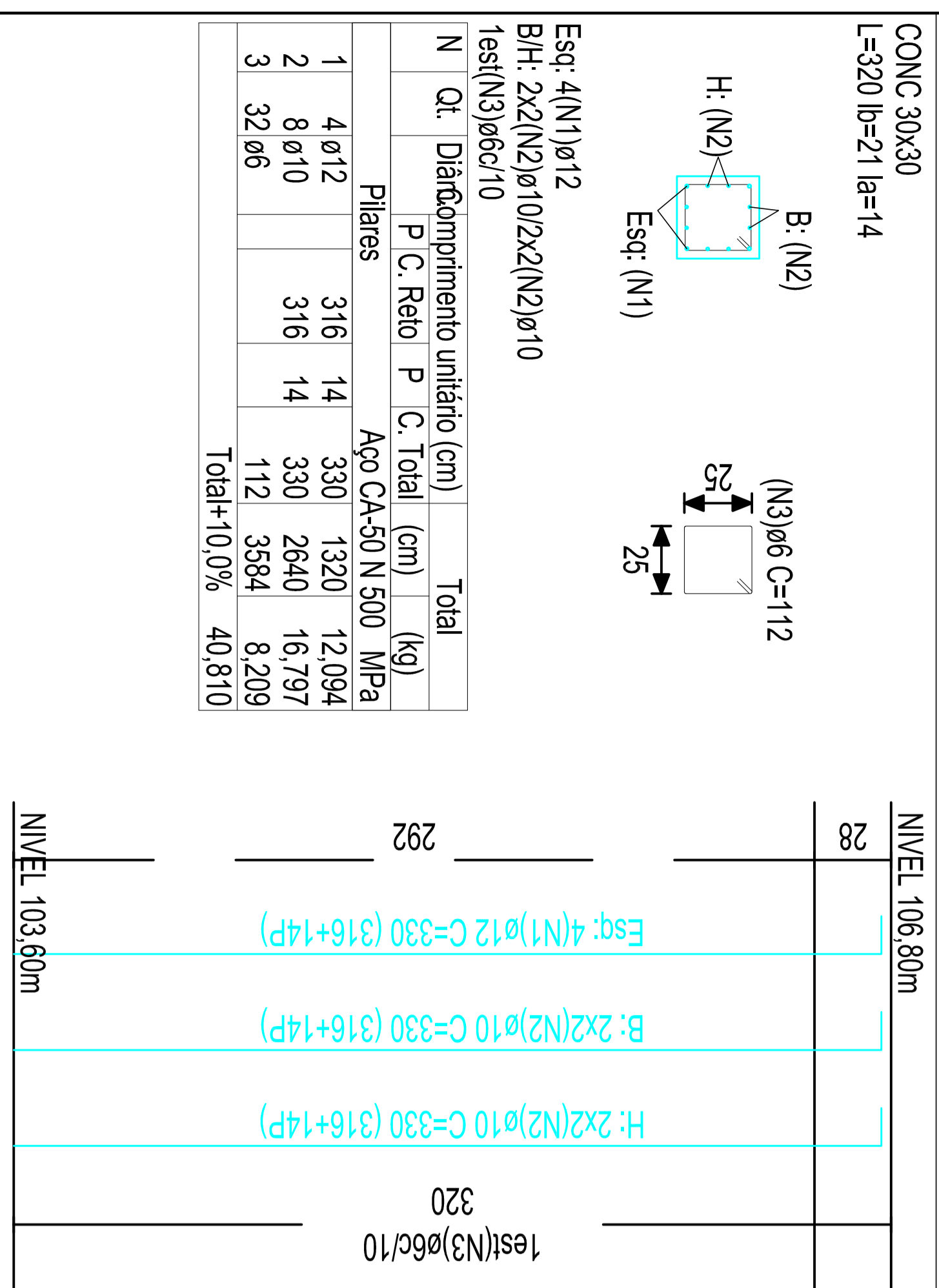


P1=P2=P3=P4=P5=P6=P7=P8 (8x)  
(30x30)

P9 (1x)  
(20x40)

P10 (1x)  
(20x40)

P22=P23=P28 (3x)  
(20x40)



PERNAS

PERNA	QUANTIDADE	DIÂMETRO	COMPRIMENTO	ÁREA	MASSA
1	4	ø12	362	1448	13,267
2	8	ø10	362	2896	18,426
3	32	ø6	112	3584	8,209
Total				100,00%	43,893

PERNAS

PERNA	QUANTIDADE	DIÂMETRO	COMPRIMENTO	ÁREA	MASSA
1	8	ø12	362	2896	26,534
2	63	ø6	112	7056	16,162
Total				100,00%	46,955

PERNAS

PERNA	QUANTIDADE	DIÂMETRO	COMPRIMENTO	ÁREA	MASSA
1	8	ø12	362	2896	26,534
2	63	ø6	112	7056	16,162
Total				100,00%	46,955

PERNAS

PERNA	QUANTIDADE	DIÂMETRO	COMPRIMENTO	ÁREA	MASSA
1	8	ø12	212	1696	15,539
2	33	ø6	112	3696	8,466
Total				100,00%	26,406

PROJETO EXECUTIVO  
ESTRUTURAL  
ARMADURA DOS PILARES

R MOREIRA  
PROJETOS E CONSTRUÇÕES LTDA  
Av. do General Medeiros, 1331 - Parque Aquilante  
São João do Boa Vista, SP - CEP: 13974-446  
Tel: (19) 3602-0182 / 3602-0218  
www.rmoreira.com.br

INSTITUTO DE PREVIDÊNCIA DOS SERVIDORES PÚBLICOS MUNICIPAIS  
CONSTRUÇÃO DE SEDE  
RUA SEMADOR SARAVIÁ, 136 - CENTRO  
SÃO JOÃO DO BOA VISTA - SP

PROJ. EXECUTIVO  
15  
2011-008