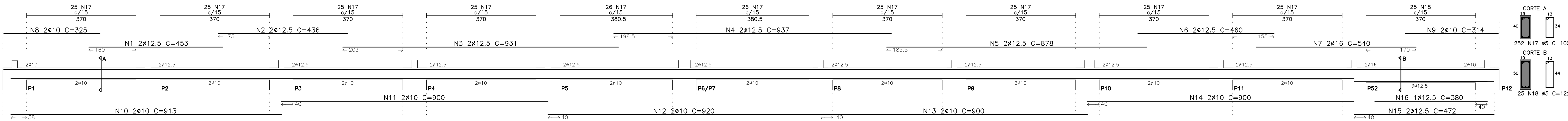
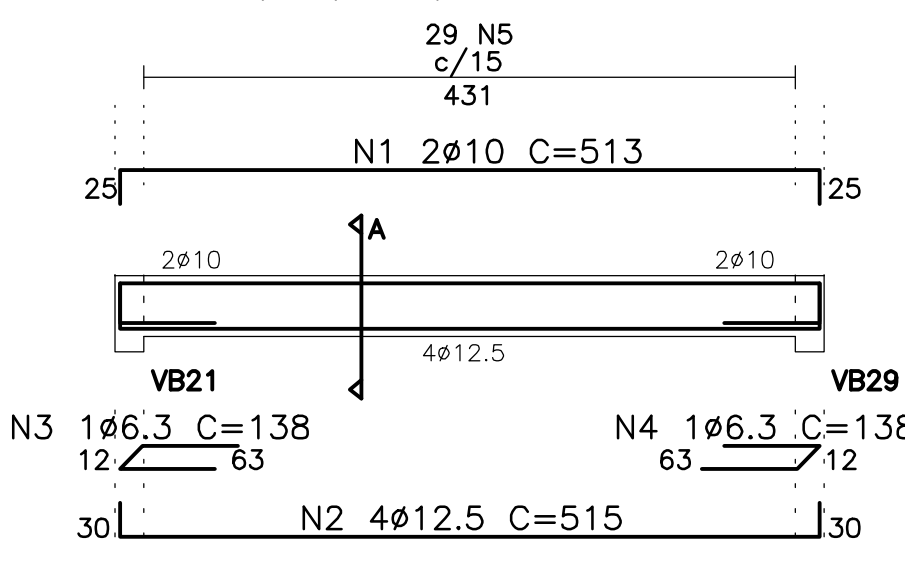


VB1 (19/40-19/50)

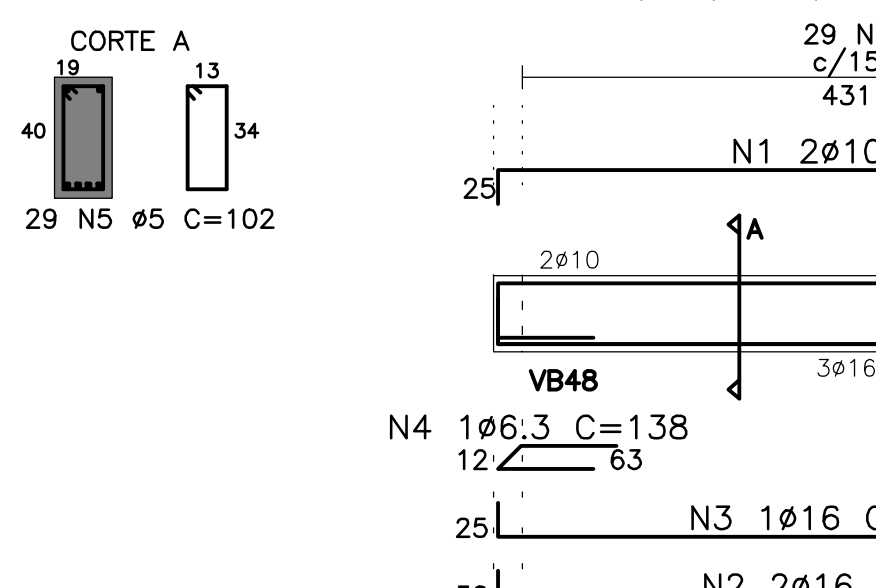


N	Q	UNI	TOTAL
1	25	451	306
2	12.5	436	872
3	6.3	451	1842
4	12.5	937	1874
5	6.3	460	1864
6	12.5	460	920
7	10	2	2
8	10	2	2
9	10	2	2
10	2	913	1826
11	2	900	1800
12	2	920	1840
13	10	2	2
14	10	2	2
15	2	472	944
16	2	380	760
17	12.5	2	2
18	5	292	102
19	5	122	305

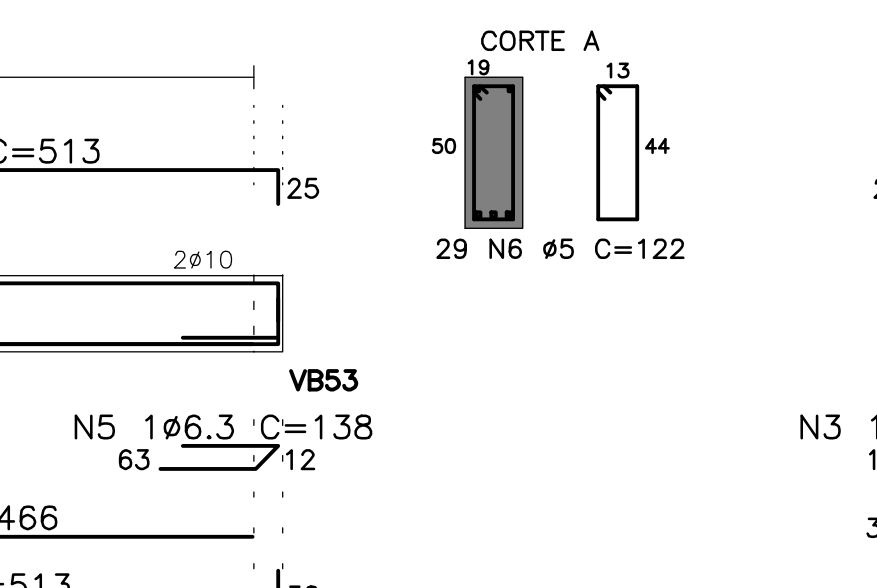
VB2 (19/40)



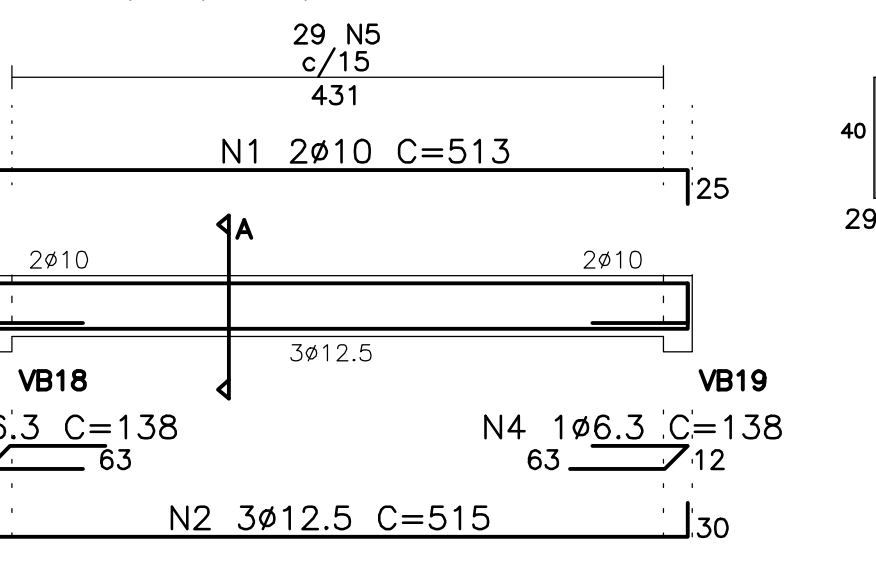
VB3 (19/50)



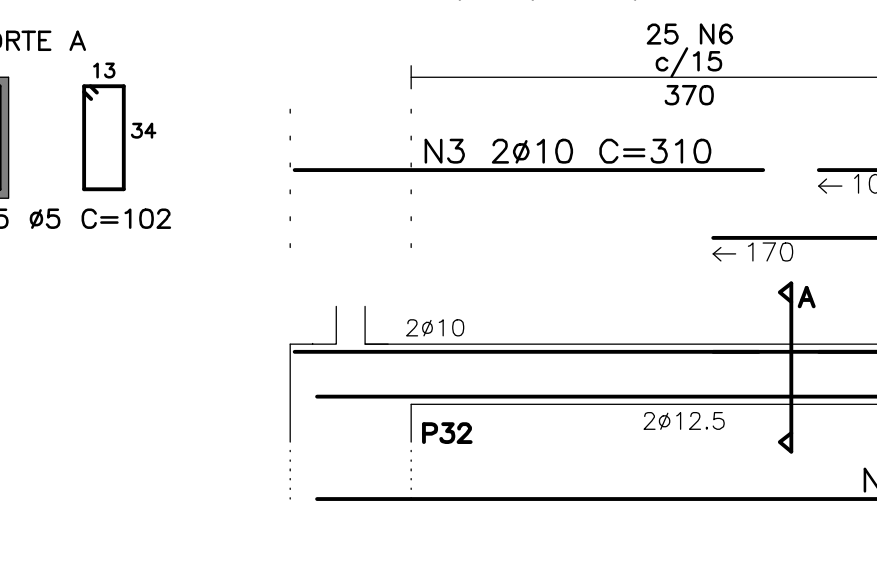
VB5 (19/40)



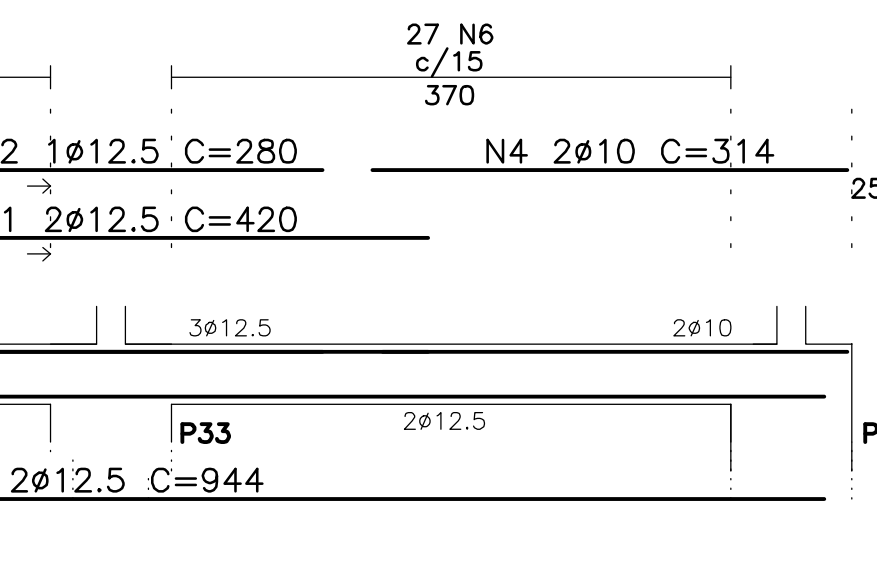
VB8 (19/40)



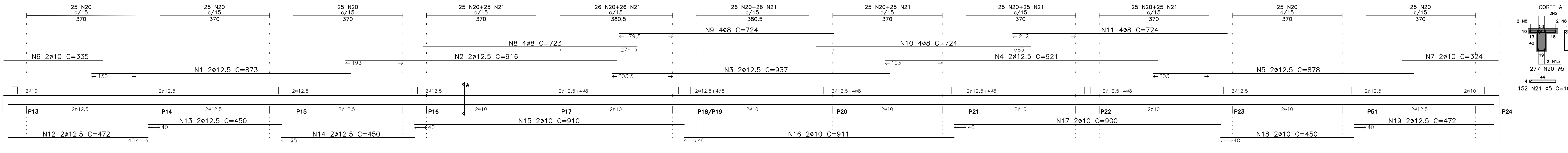
VB9 (19/40)



VB10 (19/30)

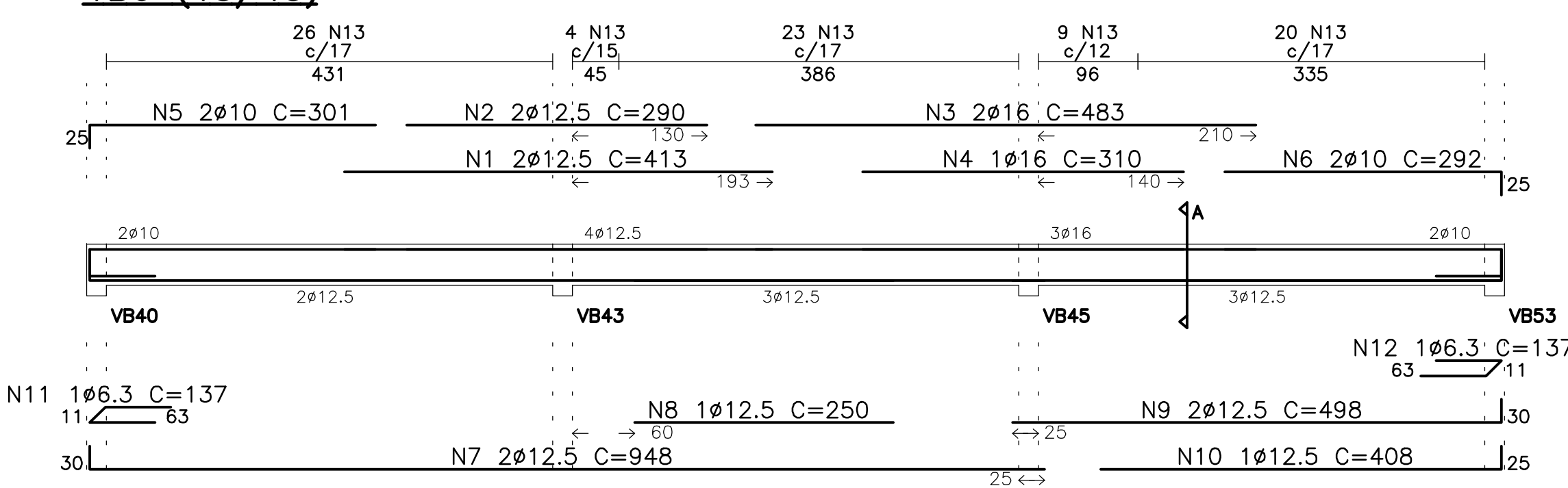


VB4 (19/40)

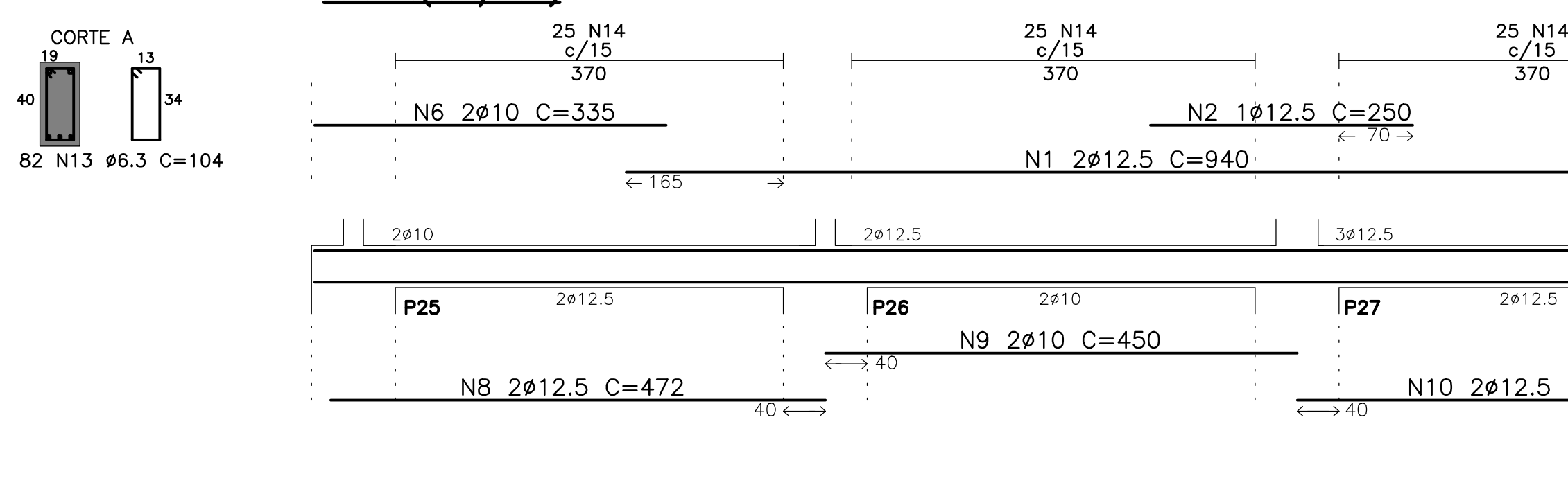


N	Q	UNI	TOTAL
1	10	2	2
2	12.5	4	4
3	6.3	1	1
4	6.3	1	1
5	5	29	102
6	5	29	102
7	5	29	102
8	5	29	102
9	5	29	102
10	5	29	102
11	5	29	102
12	5	29	102
13	5	29	102
14	5	29	102
15	5	29	102
16	5	29	102
17	5	29	102
18	5	29	102
19	5	29	102
20	5	29	102
21	5	29	102
22	5	29	102
23	5	29	102
24	5	29	102
25	5	29	102
26	5	29	102
27	5	29	102
28	5	29	102
29	5	29	102
30	5	29	102

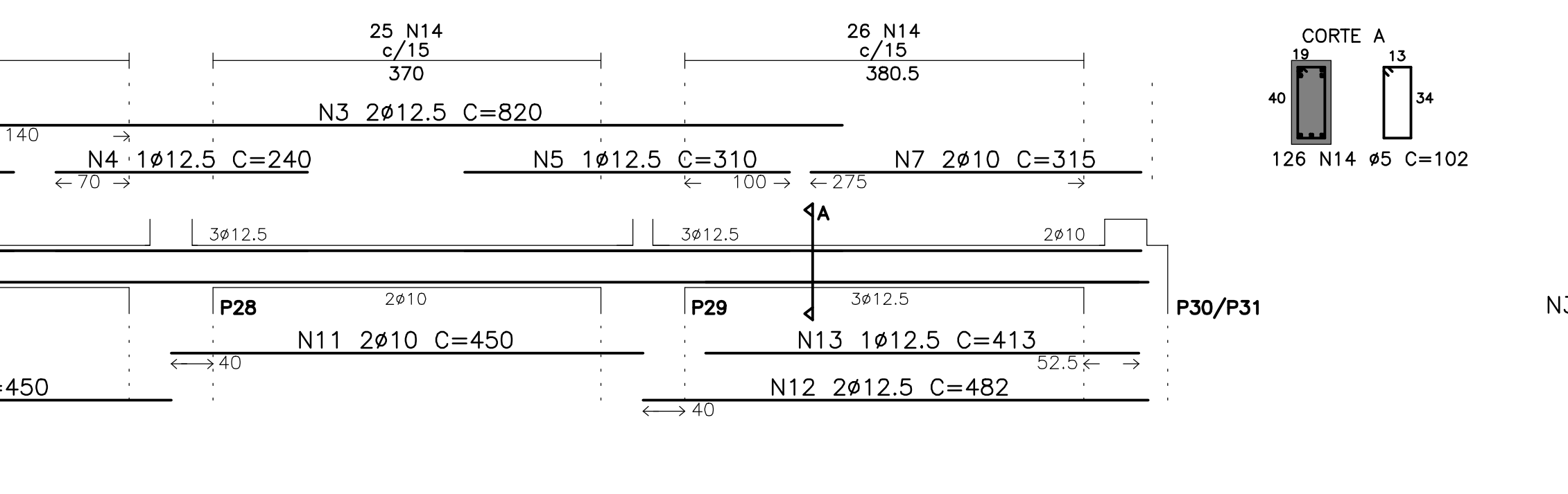
VB6 (19/40)



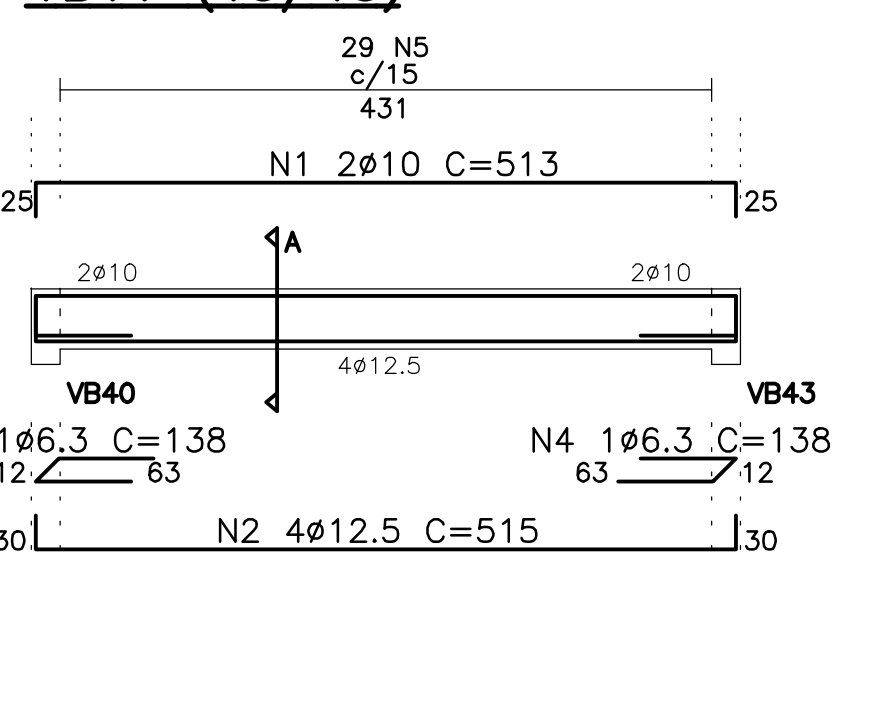
VB7 (19/40)



VB11 (19/40)

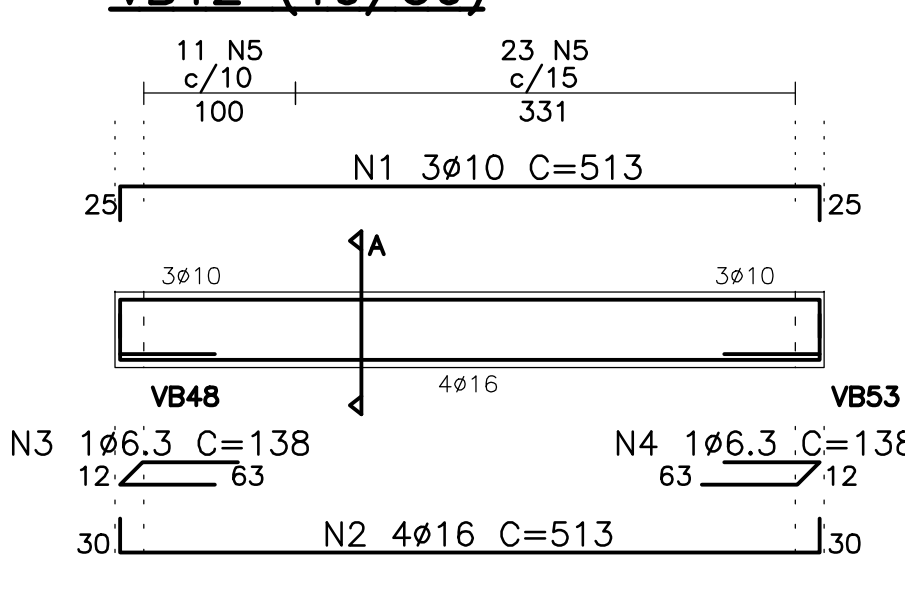


VB12 (19/50)

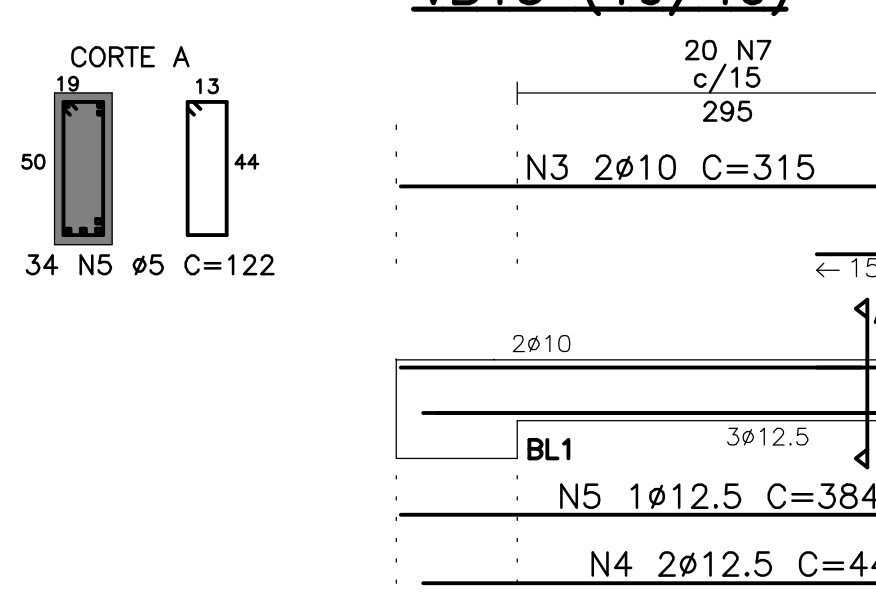


N	Q	UNI	TOTAL
1	10	2	2
2	12.5	4	4
3	6.3	1	1
4	6.3	1	1
5	5	29	102
6	5	29	102
7	5	29	102
8	5	29	102
9	5	29	102
10	5	29	102
11	5	29	102
12	5	29	102
13	5	29	102
14	5	29	102
15	5	29	102
16	5	29	102
17	5	29	102
18	5	29	102
19	5	29	102
20	5	29	102
21	5	29	102
22	5	29	102
23	5	29	102
24	5	29	102
25	5	29	102
26	5	29	102
27	5	29	102
28	5	29	102
29	5	29	102
30	5	29	102

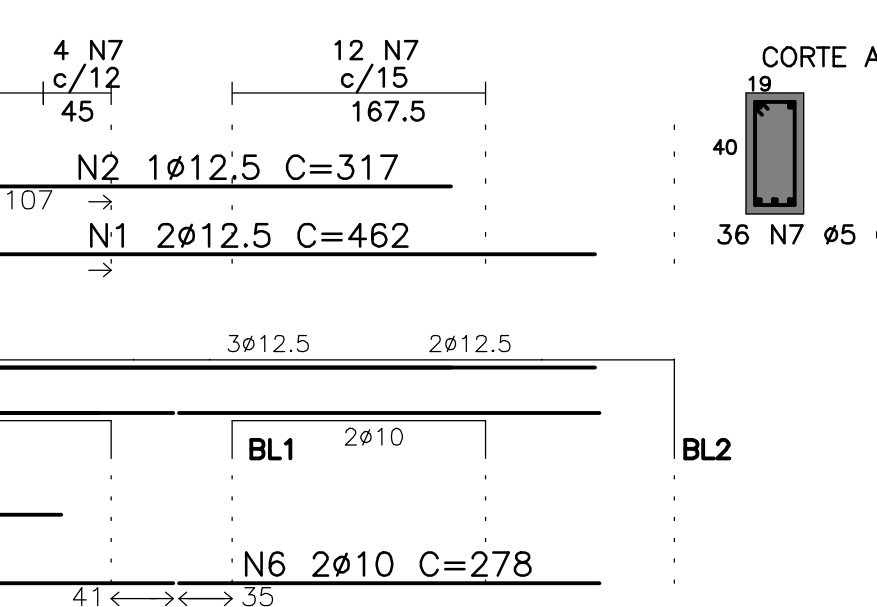
VB13 (19/40)



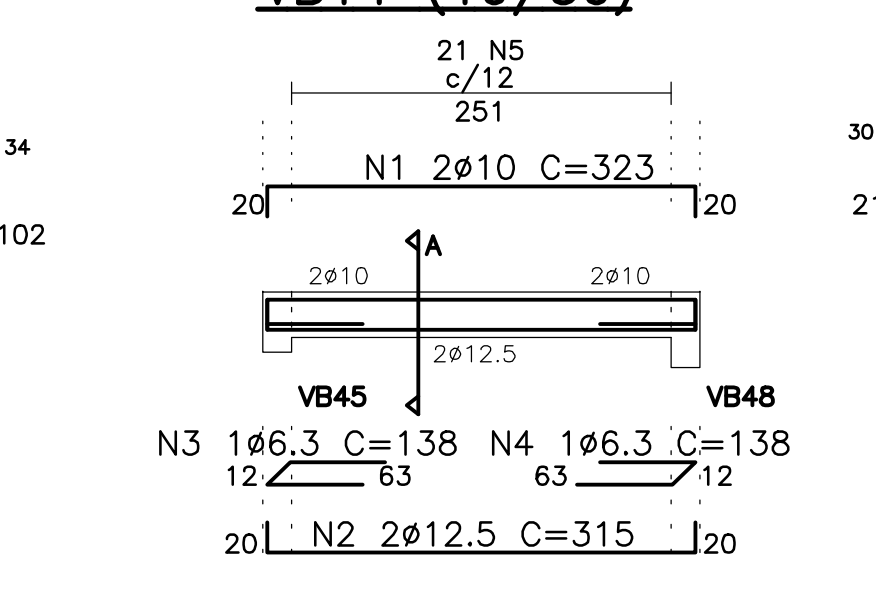
VB14 (19/30)



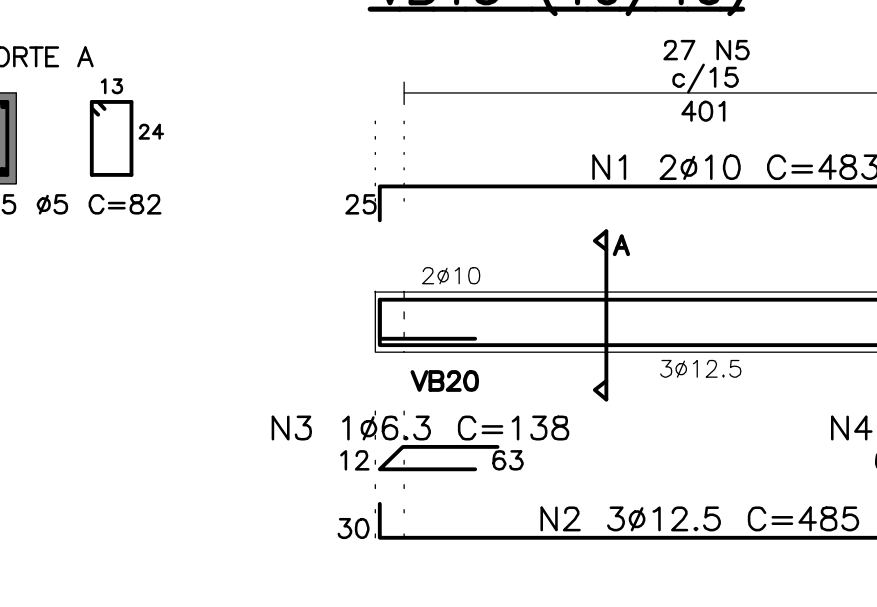
VB15 (19/40)



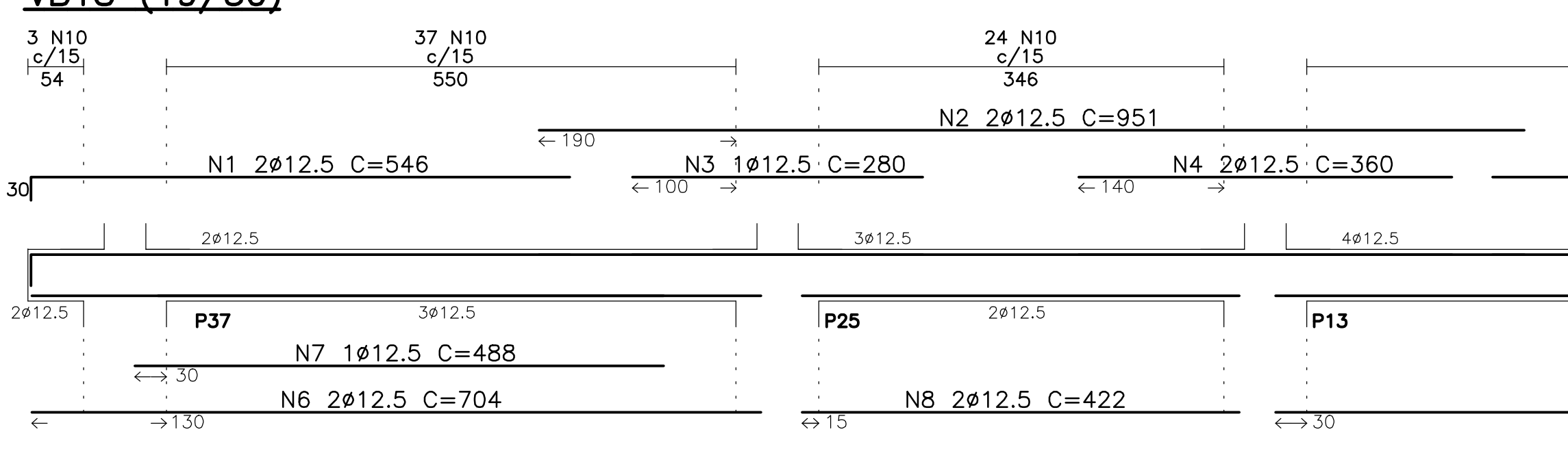
VB16 (19/30)



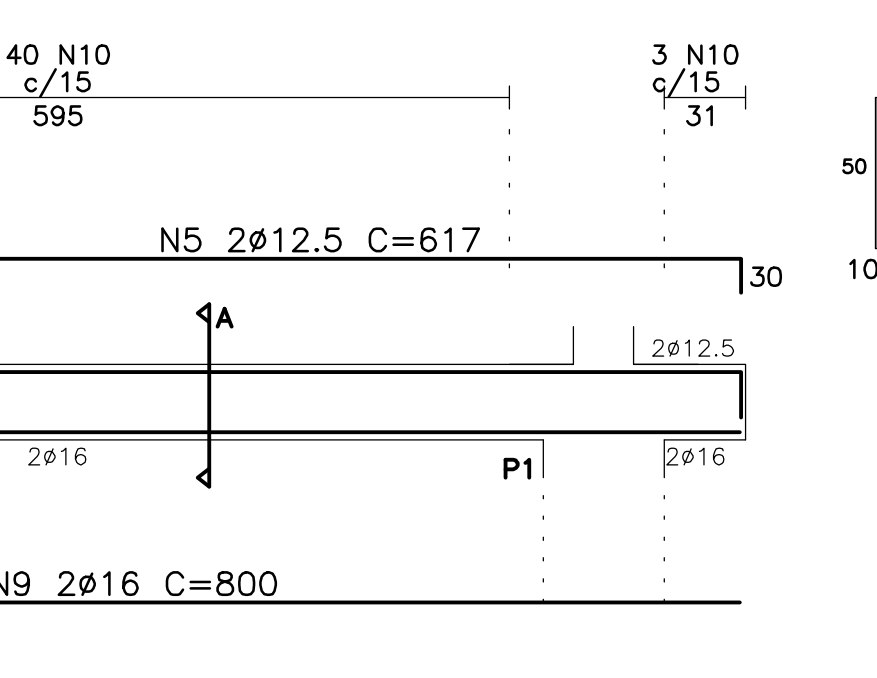
VB21 (19/50)



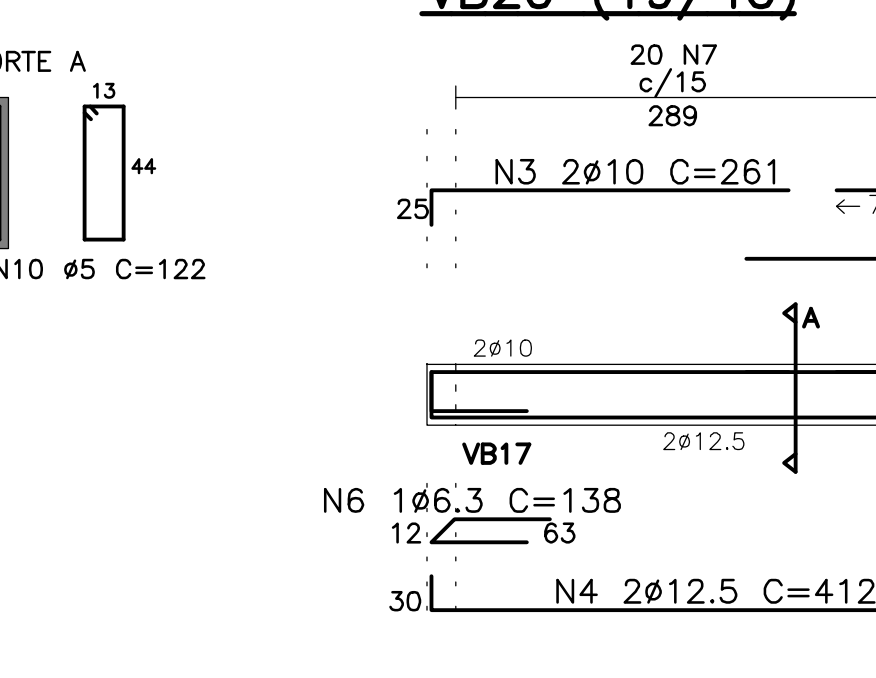
VB18 (19/50)



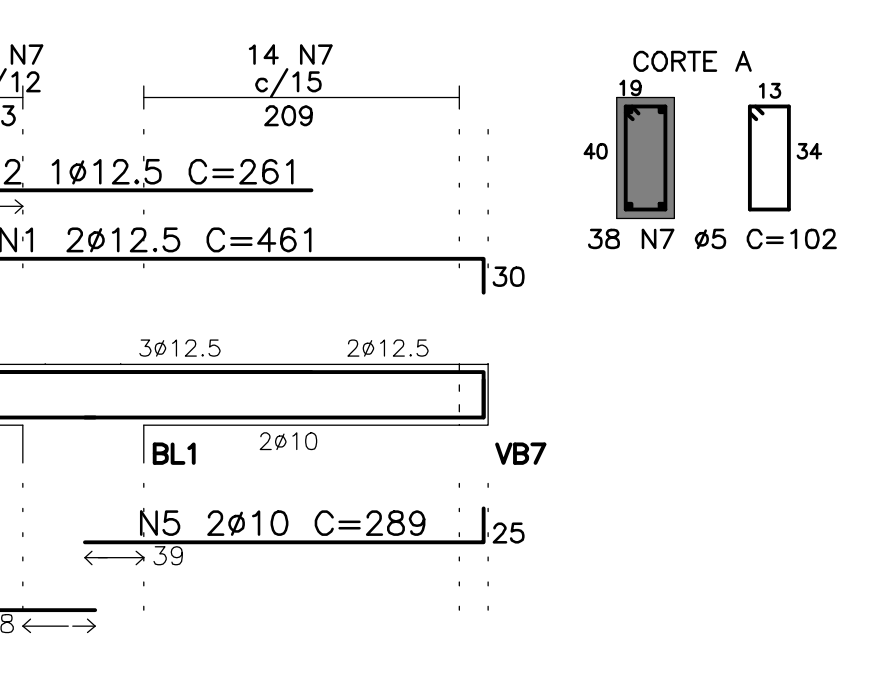
VB20 (19/40)



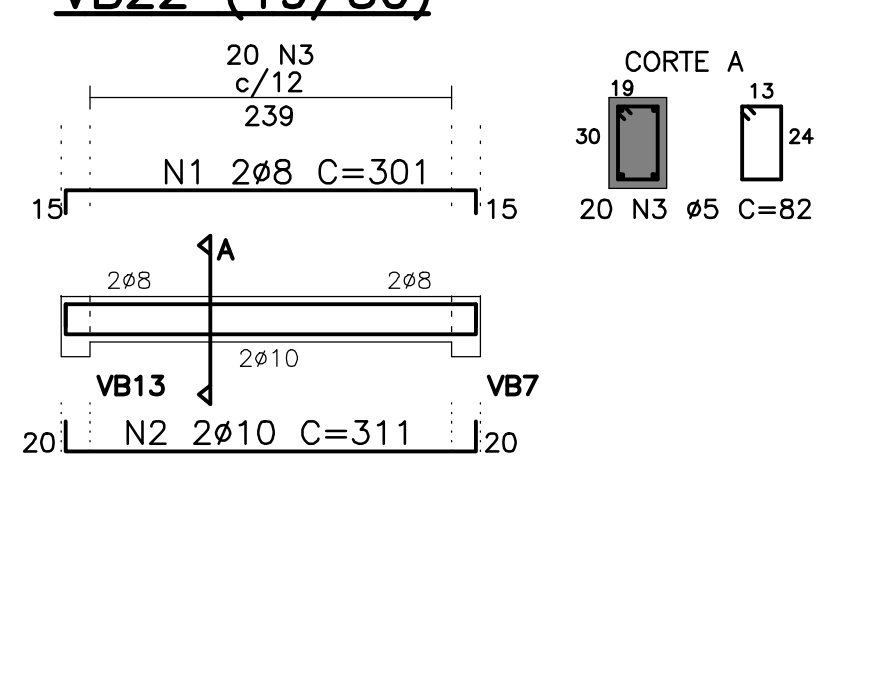
VB22 (19/30)



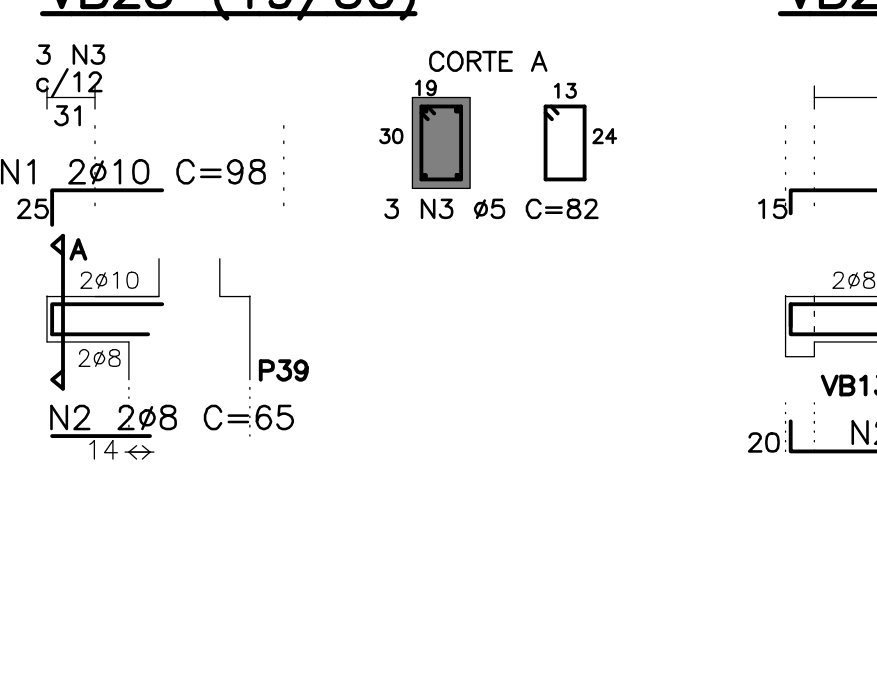
VB23 (19/30)



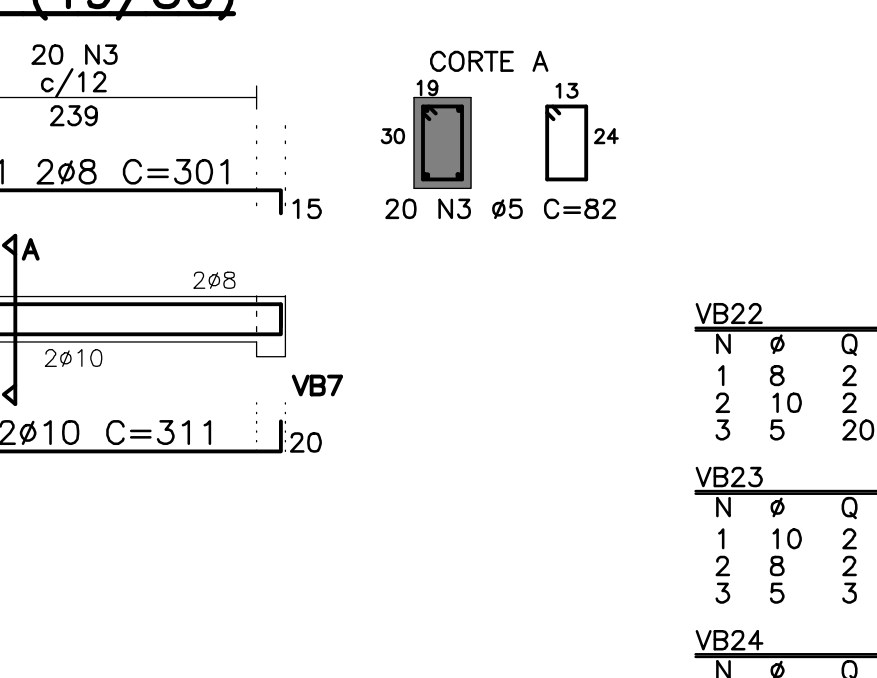
VB24 (19/30)



VB22 (19/30)



VB23 (19/30)

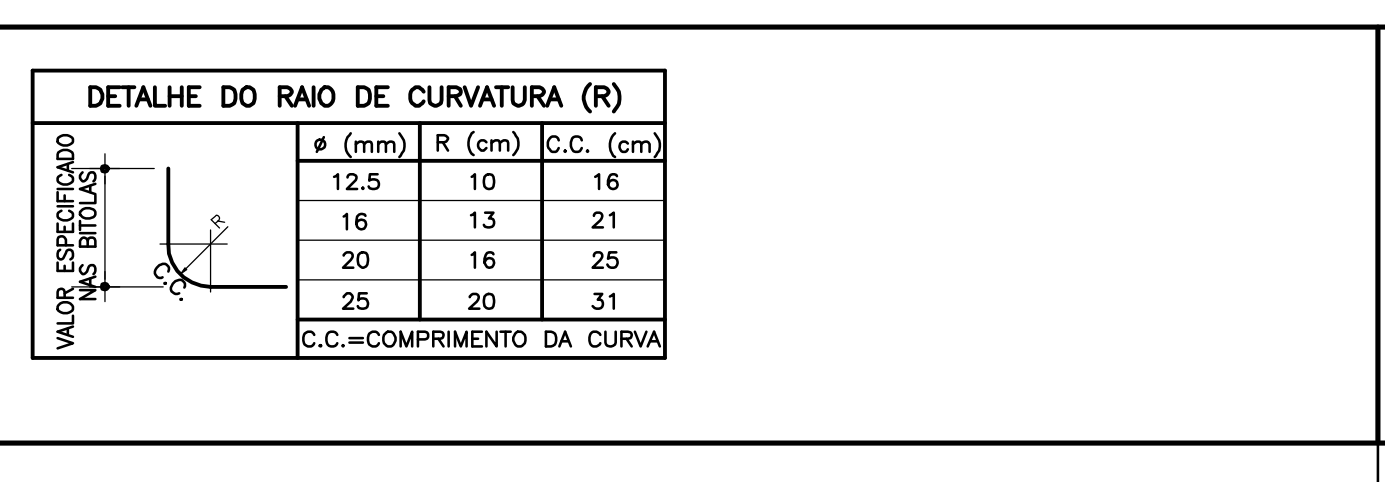


N	Q	UNI	TOTAL
1	10	2	2
2	12.5	4	4
3	6.3	1	1
4	6.3	1	1
5	5	29	102
6	5	29	102
7	5	29	102
8	5	29	102
9	5	29	102
10	5	29	102
11	5	29	102
12	5	29	102
13	5	29	102
14	5	29	102
15	5	29	102
16	5	29	102
17	5	29	102
18	5	29	102
19	5	29	102
20	5	29	102
21	5	29	102
22	5	29	102
23	5	29	102
24	5	29	102
25	5	29	102
26	5	29	102
27	5	29	102
28	5	29	102
29	5	29	102
30	5	29	102

CR-1A - PADRÃO TUBULÃO 204

MODIFICAÇÕES	APPROVAÇÃO	DATA	APPROVAÇÃO	DATA

NOTAS
 01-CONCRETO= fck ≥ 25 MPa
 02-Aço= CA-50 = fyk=500 MPa
 03-MEDIDAS EM cm, NUNCA EM m.
 04-NÃO TIRAR MEDIDAS EM ESCALA.
 05-CONFIRMAR MEDIDAS NO LOCAL.
 06- COBRIMENTO=3,0cm



FDE
 FUNDAÇÃO PARA O DESENVOLVIMENTO DA EDUCAÇÃO
 PROJETO DESENVOLVIDO POR ENGENHARIA E PROJETOS ESTRUTURAIS A PARTIR DO PAD CR-1 12.01.044
 RESPONSÁVEL TÉCNICO: NELSON SHOTARO YOKOI - CREIA 08006974-0

RESUMO DAS VIGAS DA FUNDAÇÃO (01/03)	ACC - COMPR(cm) PESO(kg)	PESO TOTAL (kg)
1	122	446
2	125	451
3	63	138
4	63	138
5	29	102
6	29	102
7	29	102
8	29	102
9	29	102
10	29	102
11	29	102
12	29	102
13	29	102
14	29	102
15	29	102
16	29	102
17	29	102
18	29	102
19	29	102
20	29	102
21	29	102
22	29	102
23	29	102
24	29	102
25	29	102
26	29	102
27	29	102
28	29	102
29	29	102
30	29	102