

VB17 (19/40)

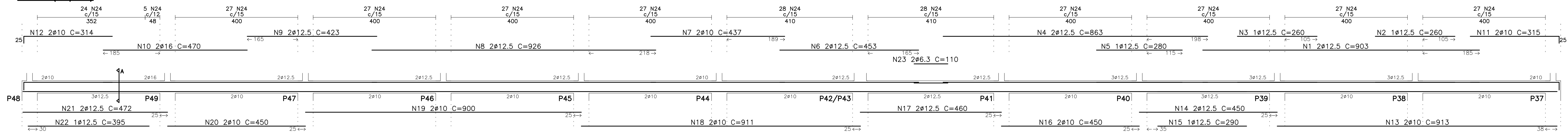
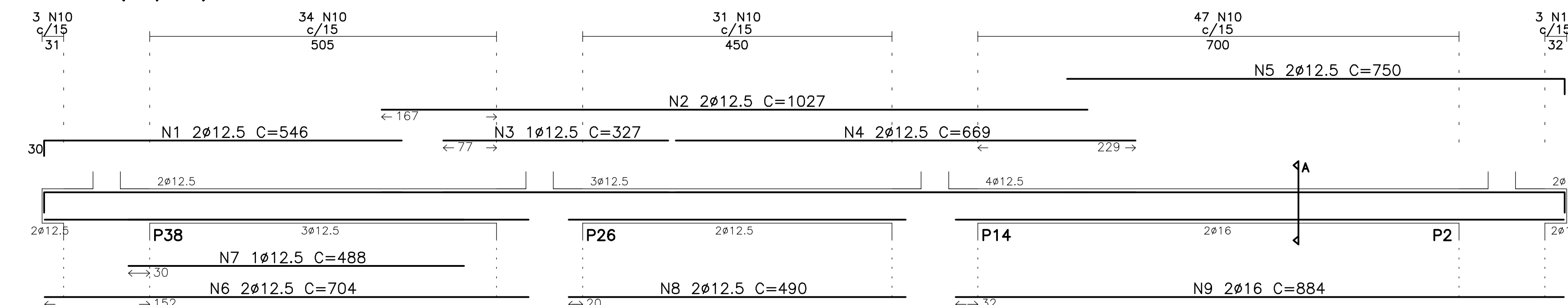
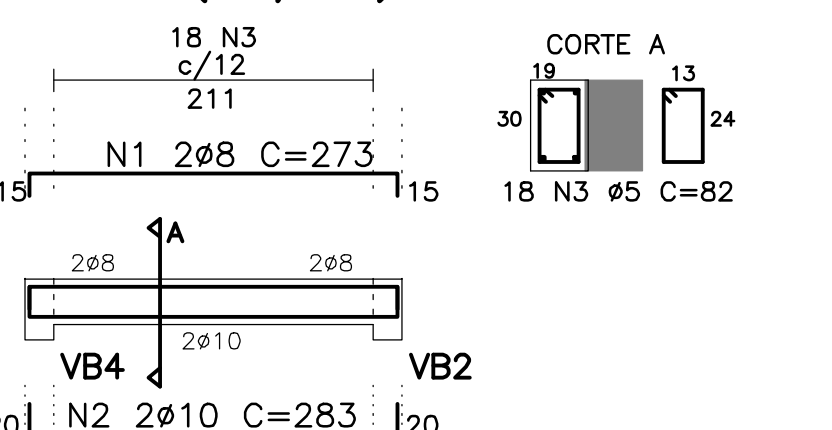


Table with columns: N, Q, UNI, TOTAL. Lists reinforcement quantities for beam VB17.

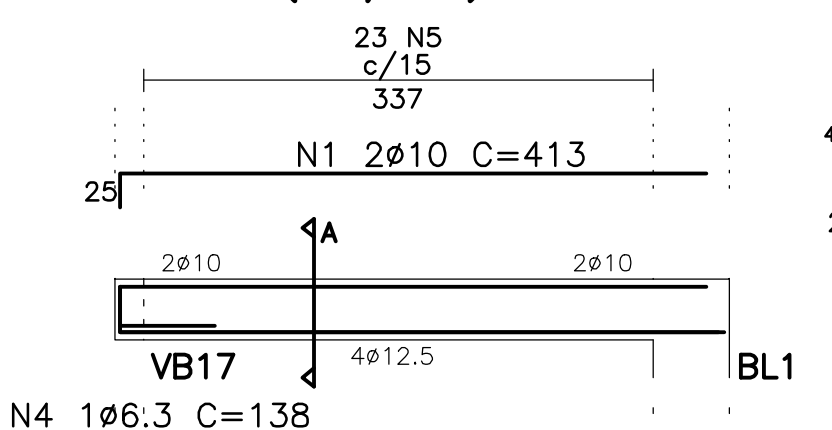
VB19 (19/50)



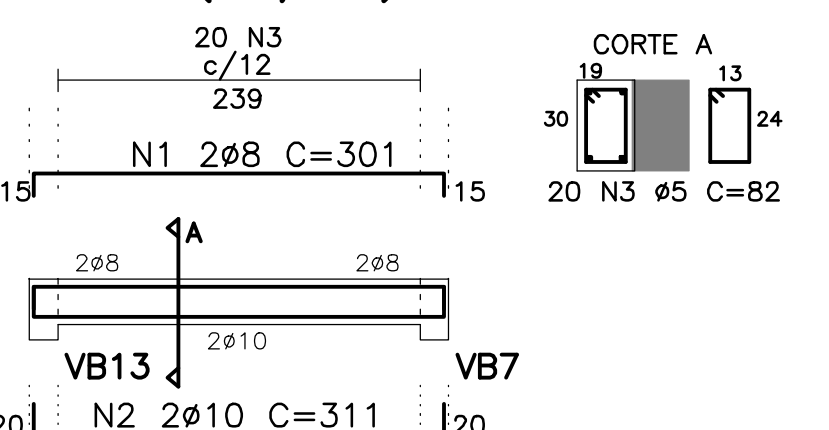
VB25 (19/30)



VB26 (19/40)



VB27 (19/30)



VB28 (19/30)

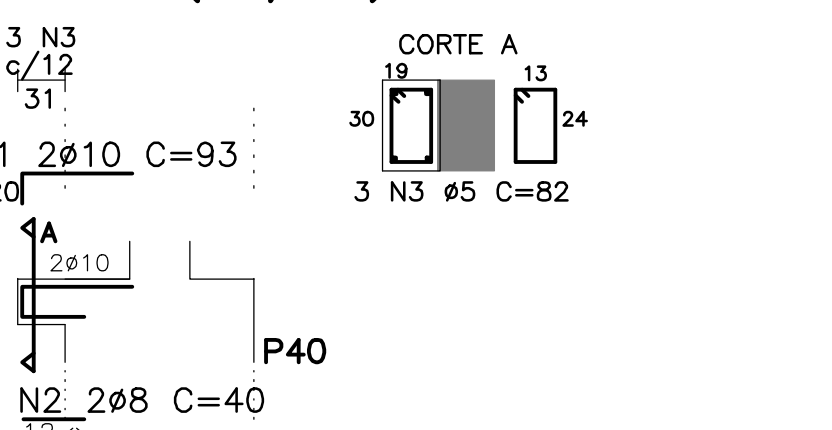
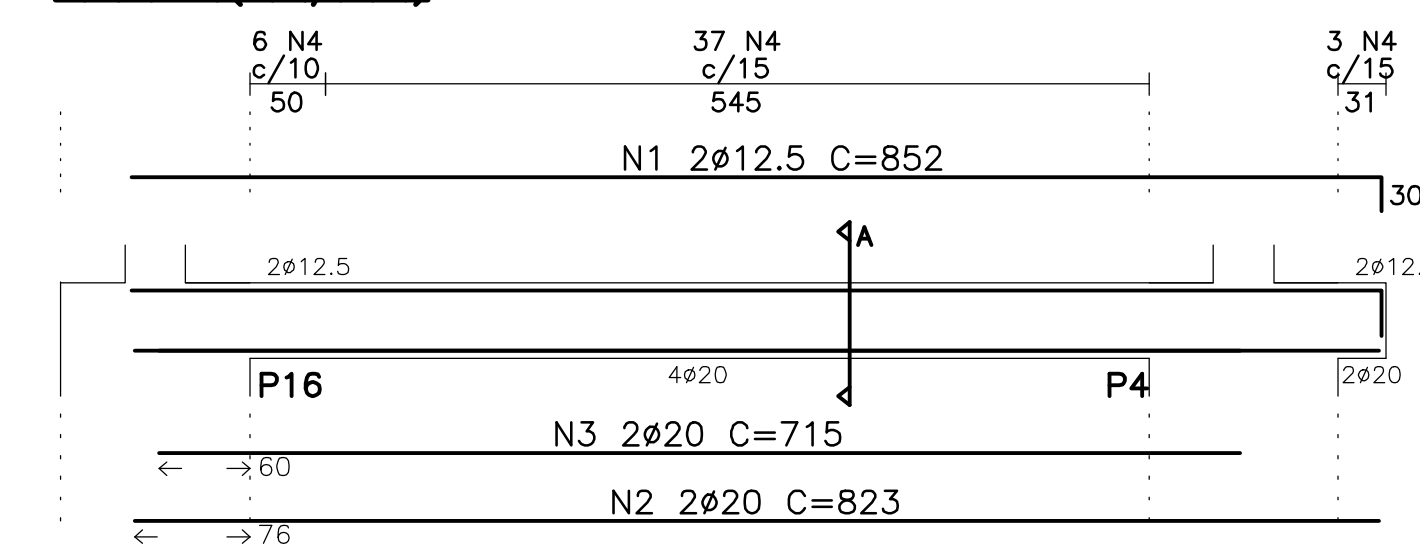
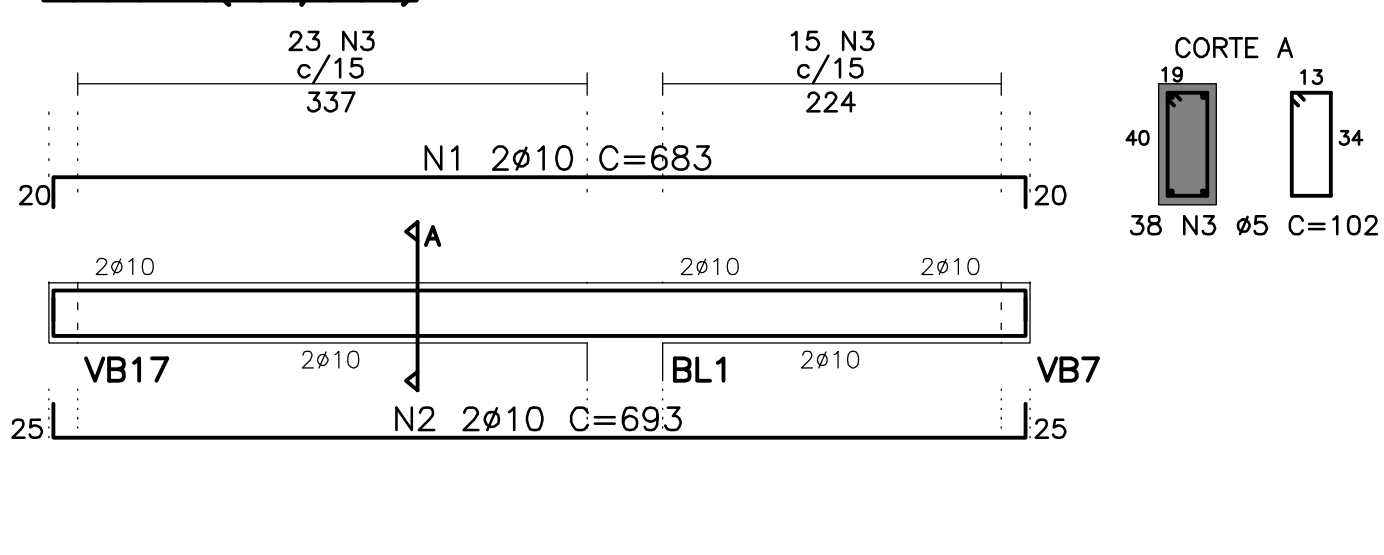


Table with columns: N, Q, UNI, TOTAL. Lists reinforcement quantities for beams VB19, VB25, VB26, VB27, and VB28.

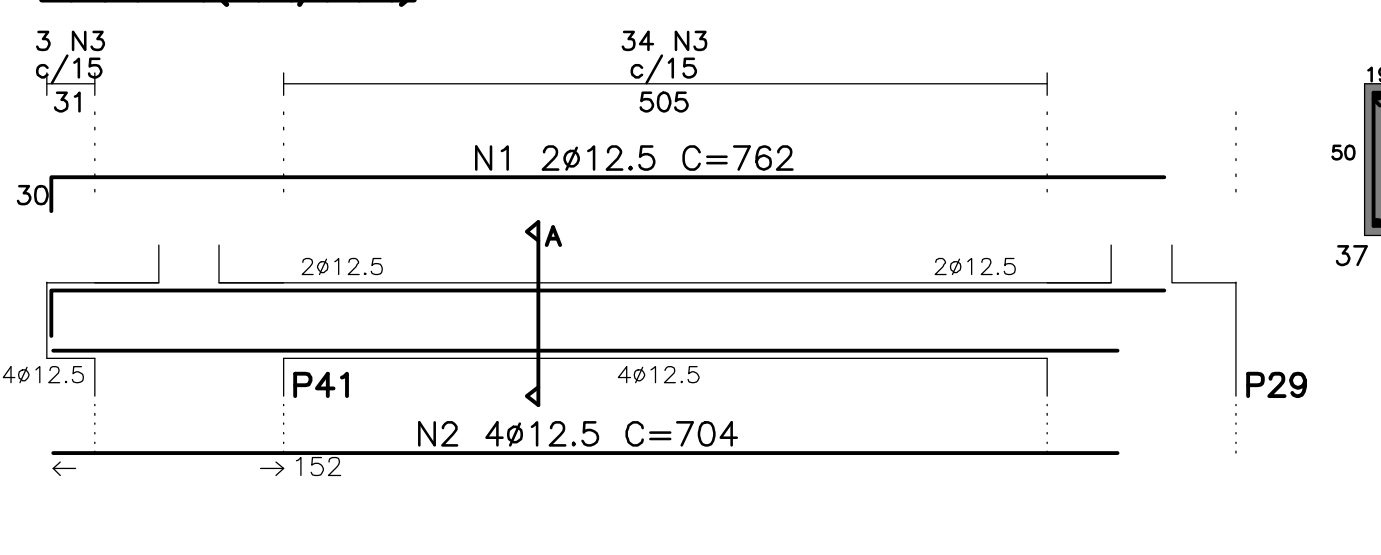
VB29 (19/50)



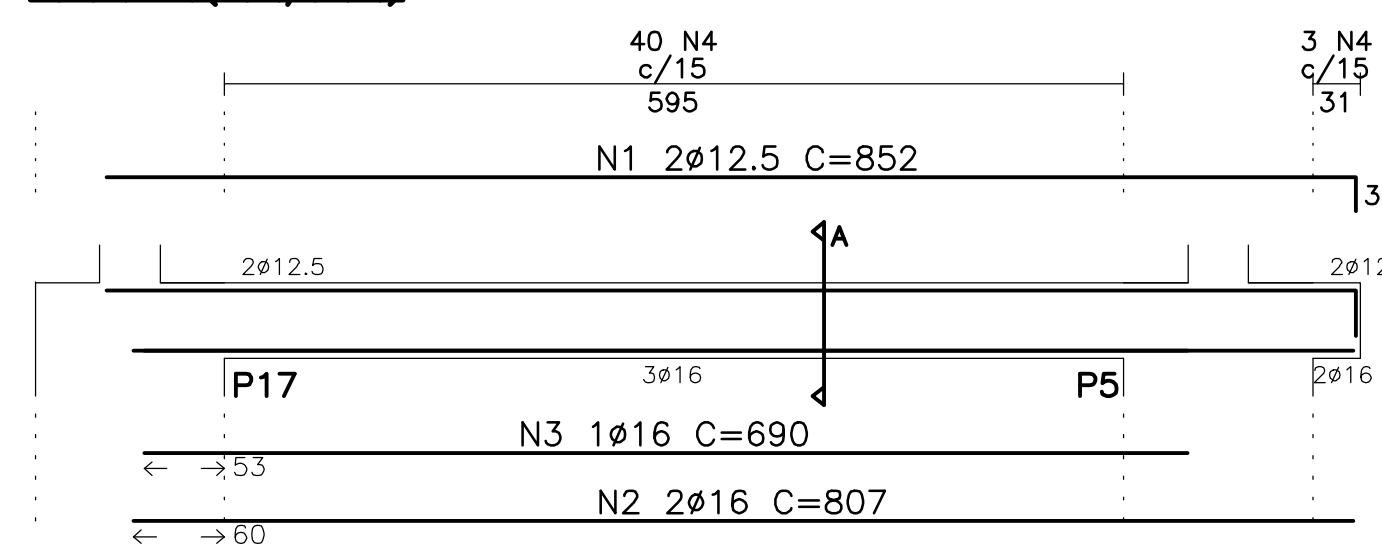
VB30 (19/40)



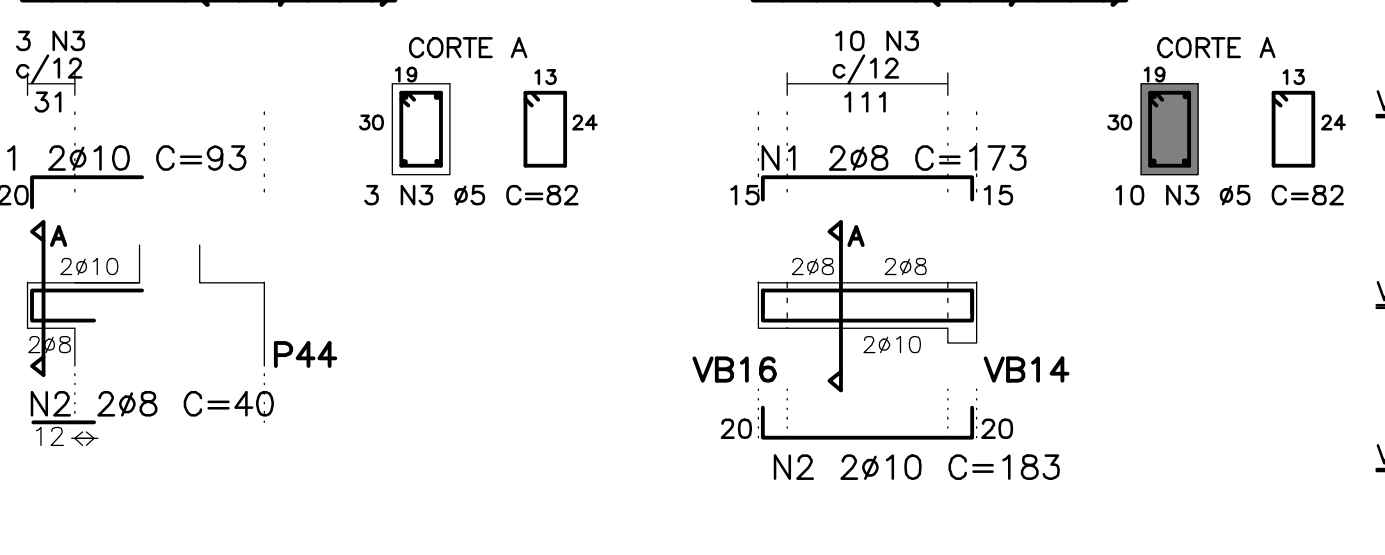
VB31 (19/50)



VB32 (19/50)



VB36 (19/30)



VB47 (19/30)

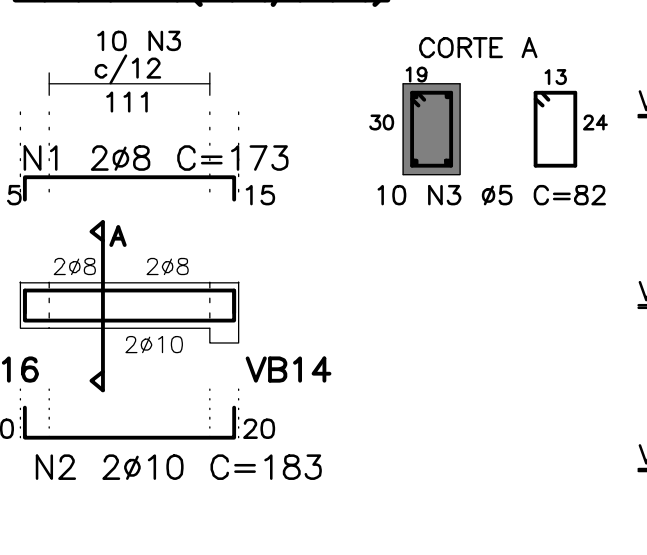
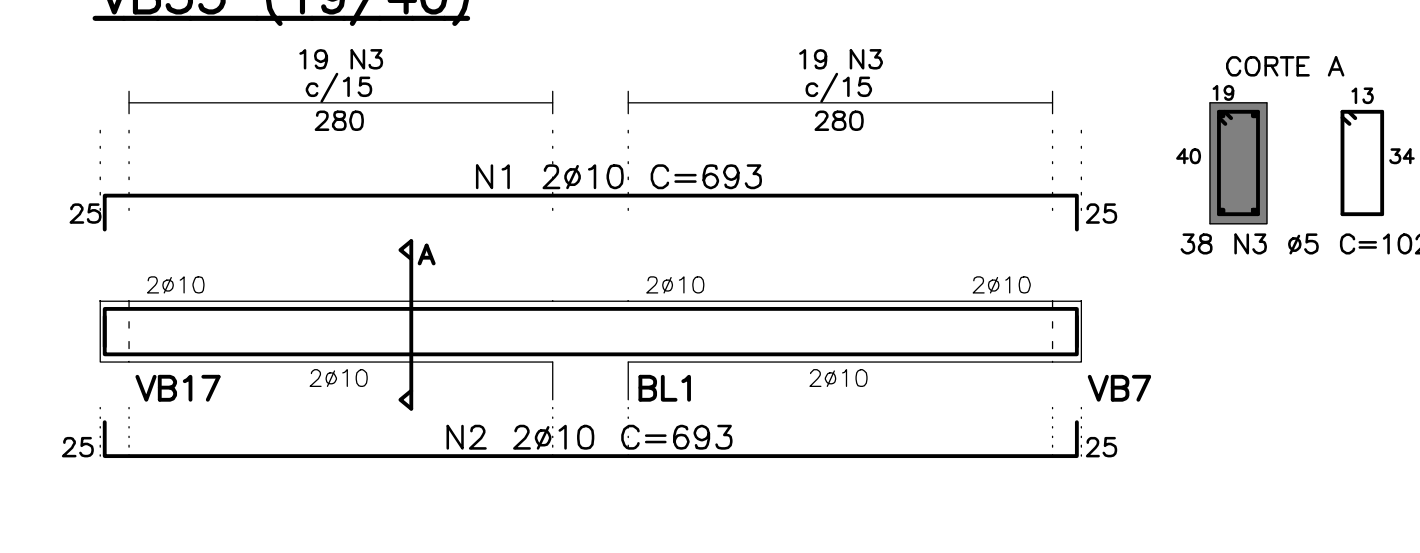
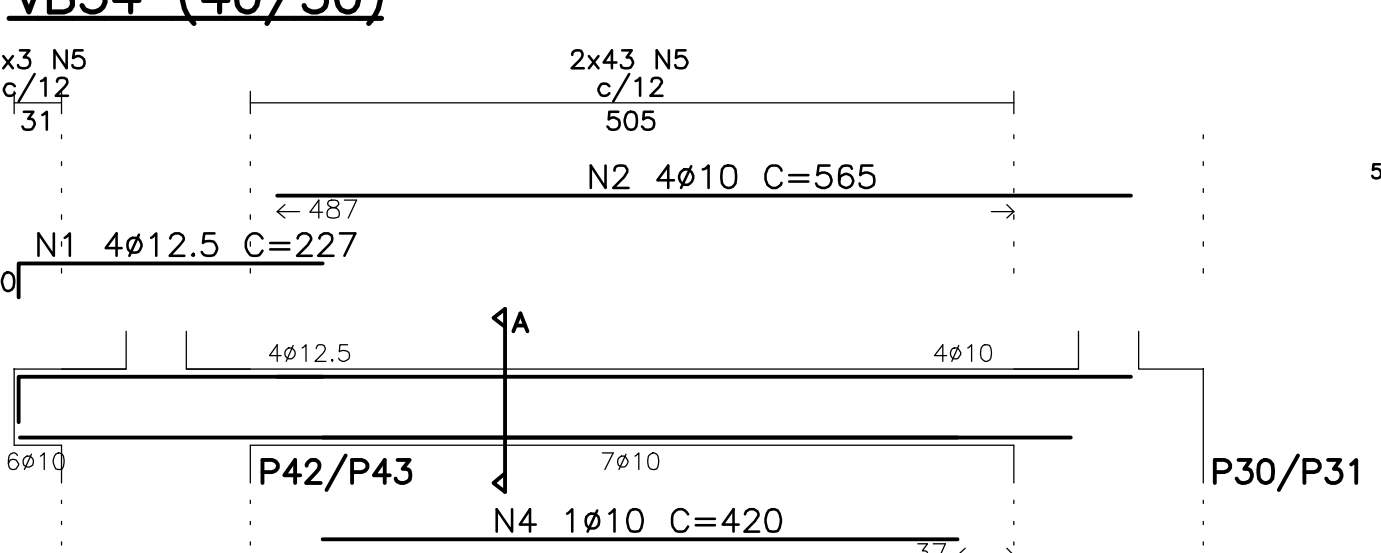


Table with columns: N, Q, UNI, TOTAL. Lists reinforcement quantities for beams VB29, VB30, VB31, VB32, VB36, and VB47.

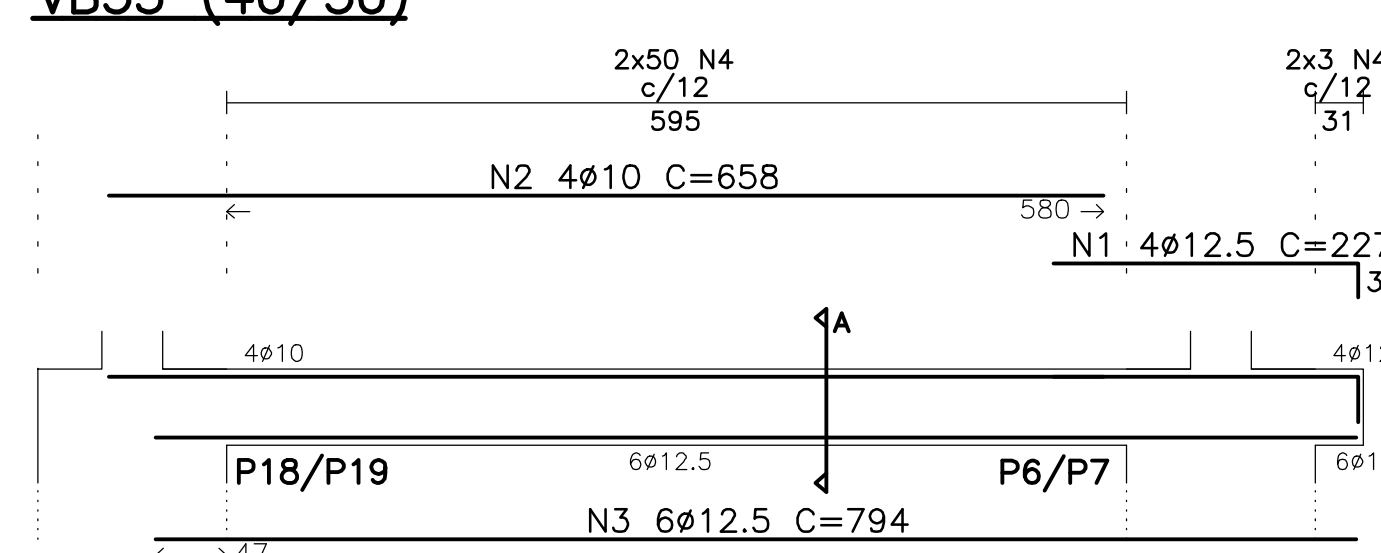
VB33 (19/40)



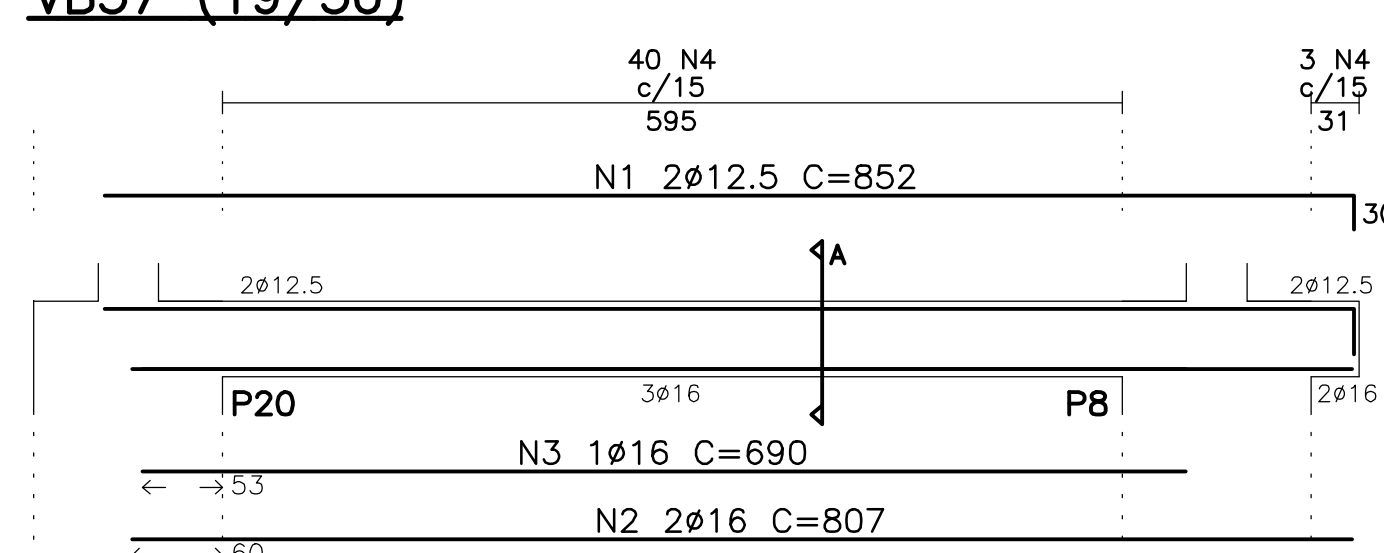
VB34 (40/50)



VB35 (40/50)



VB37 (19/50)



VB38 (19/30)

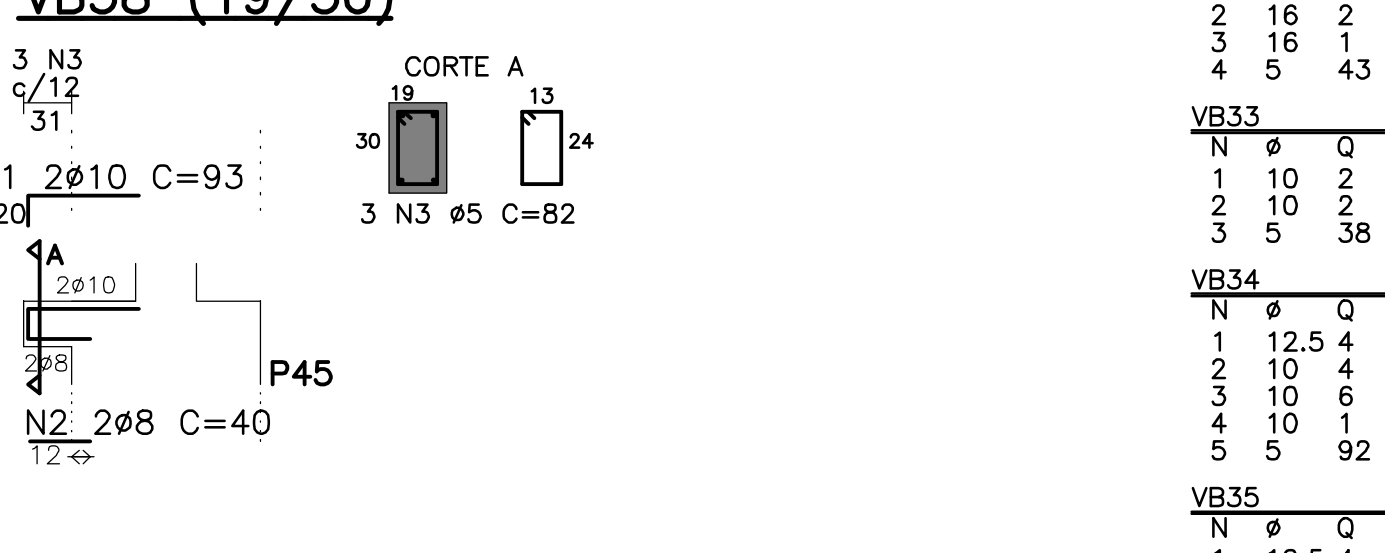
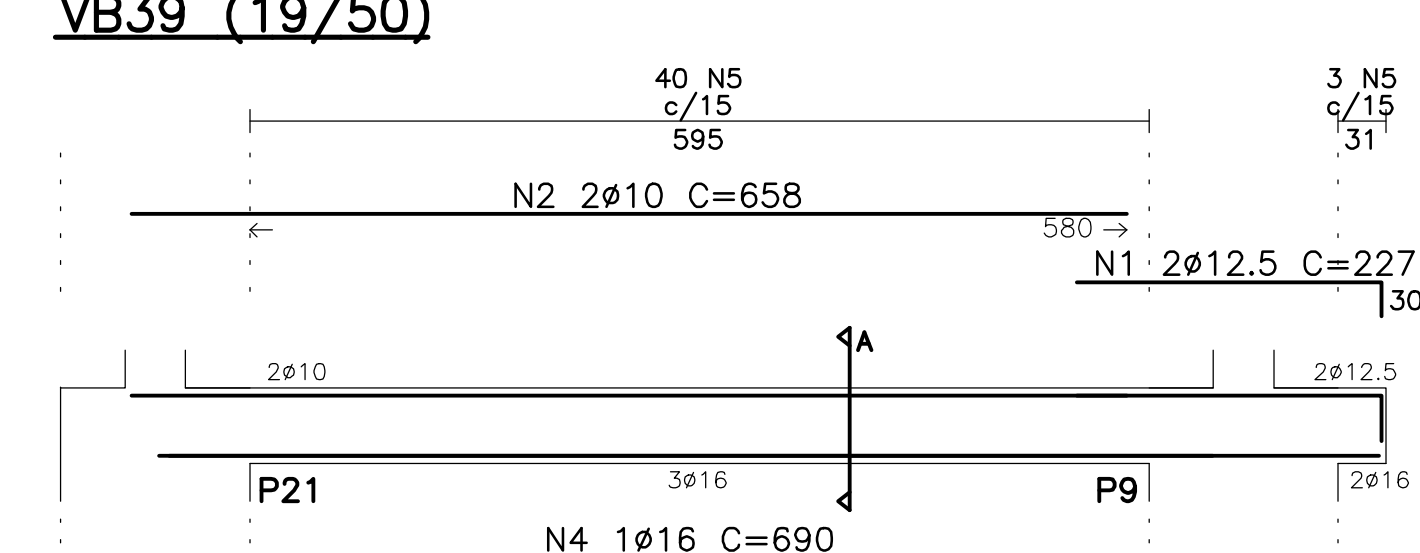
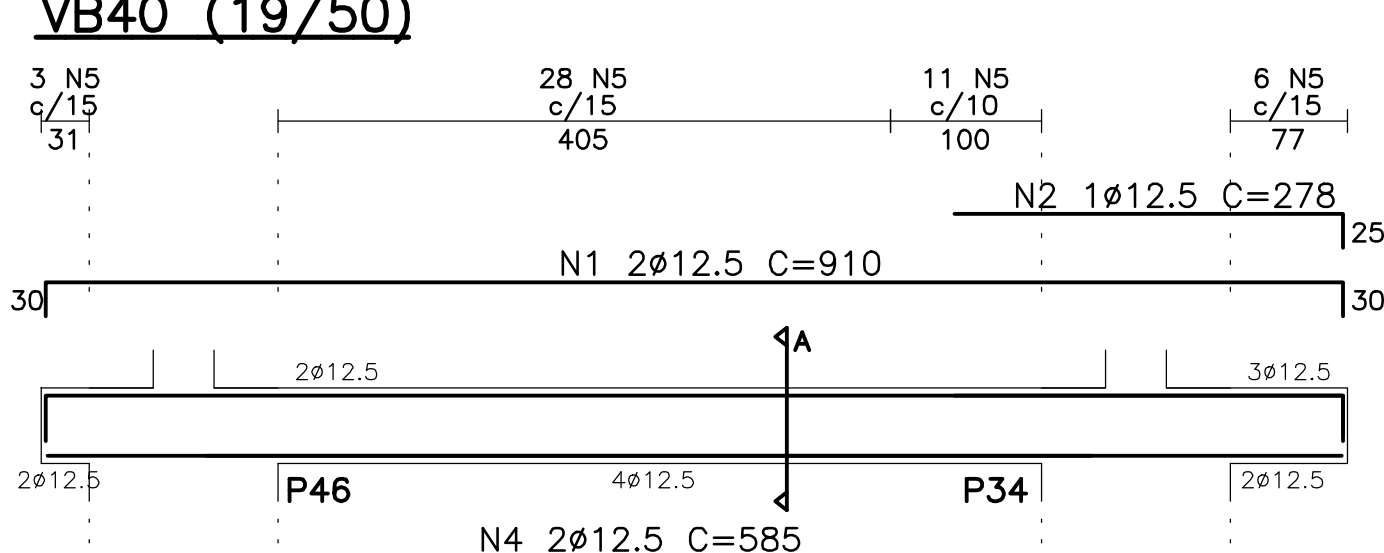


Table with columns: N, Q, UNI, TOTAL. Lists reinforcement quantities for beams VB33, VB34, VB35, VB37, and VB38.

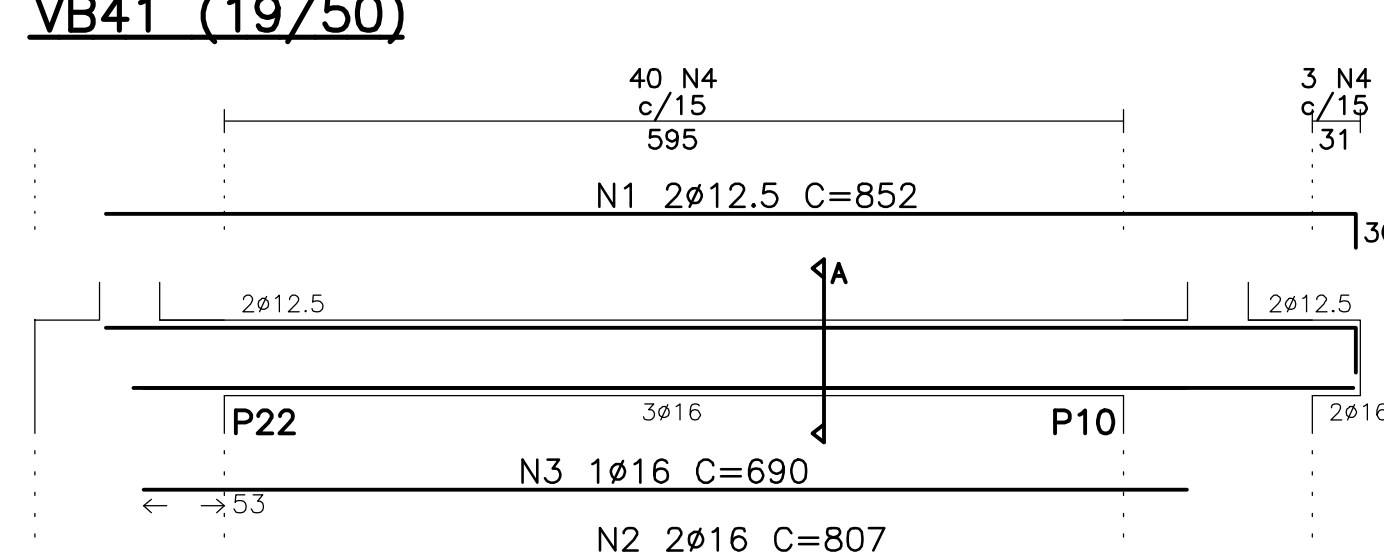
VB39 (19/50)



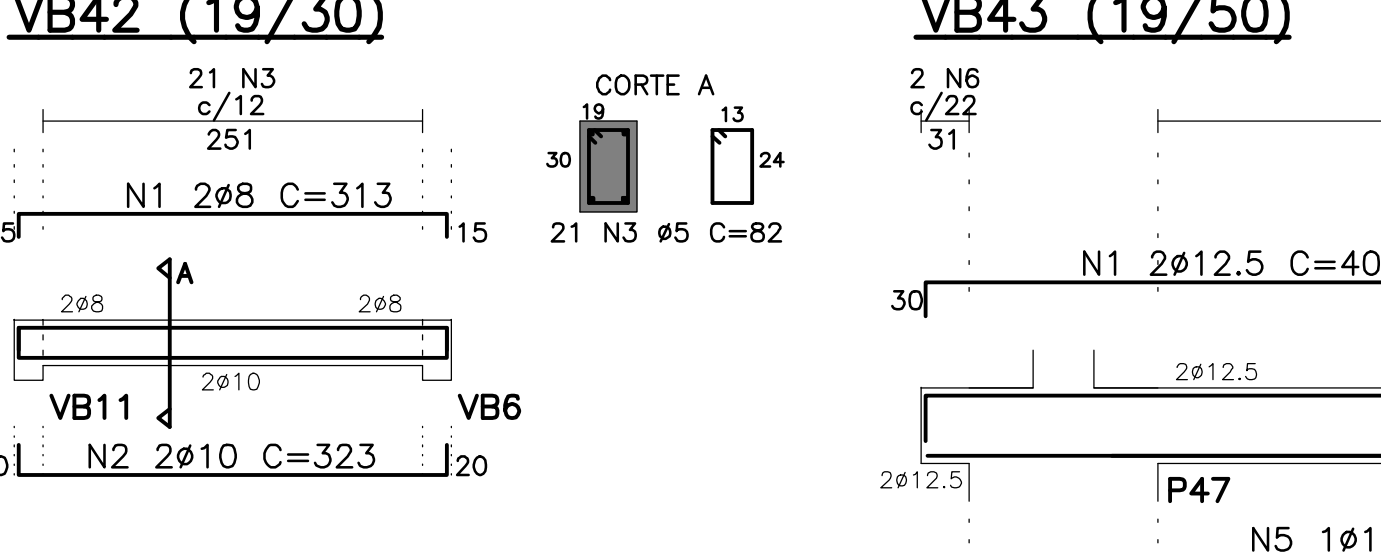
VB40 (19/50)



VB41 (19/50)



VB42 (19/30)



VB43 (19/50)

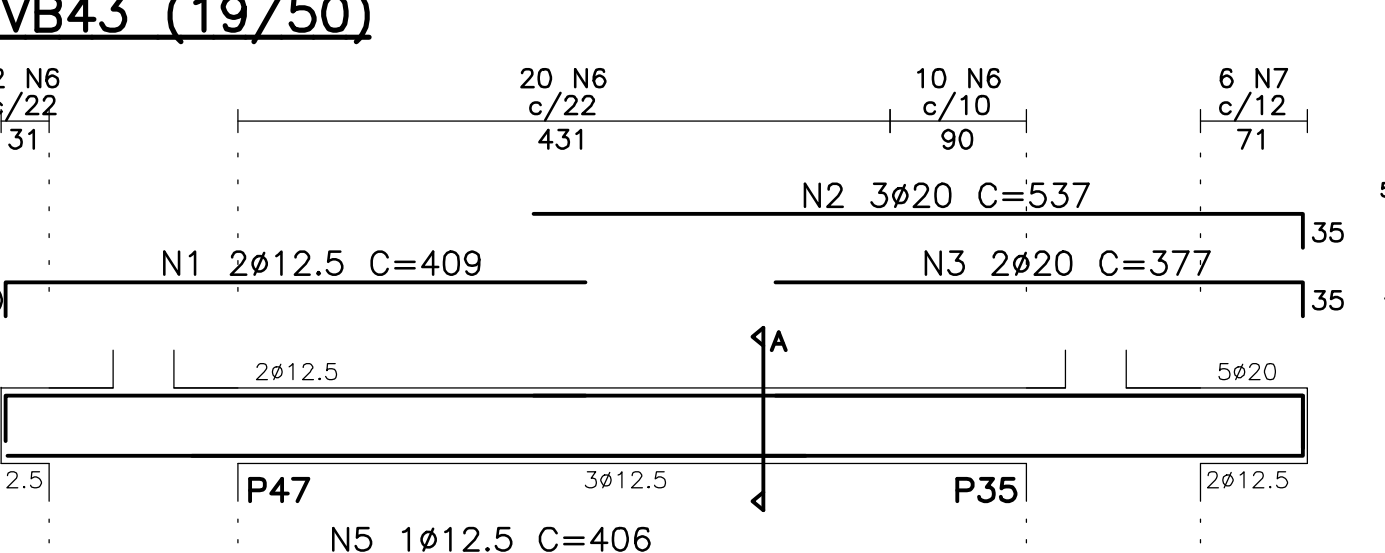
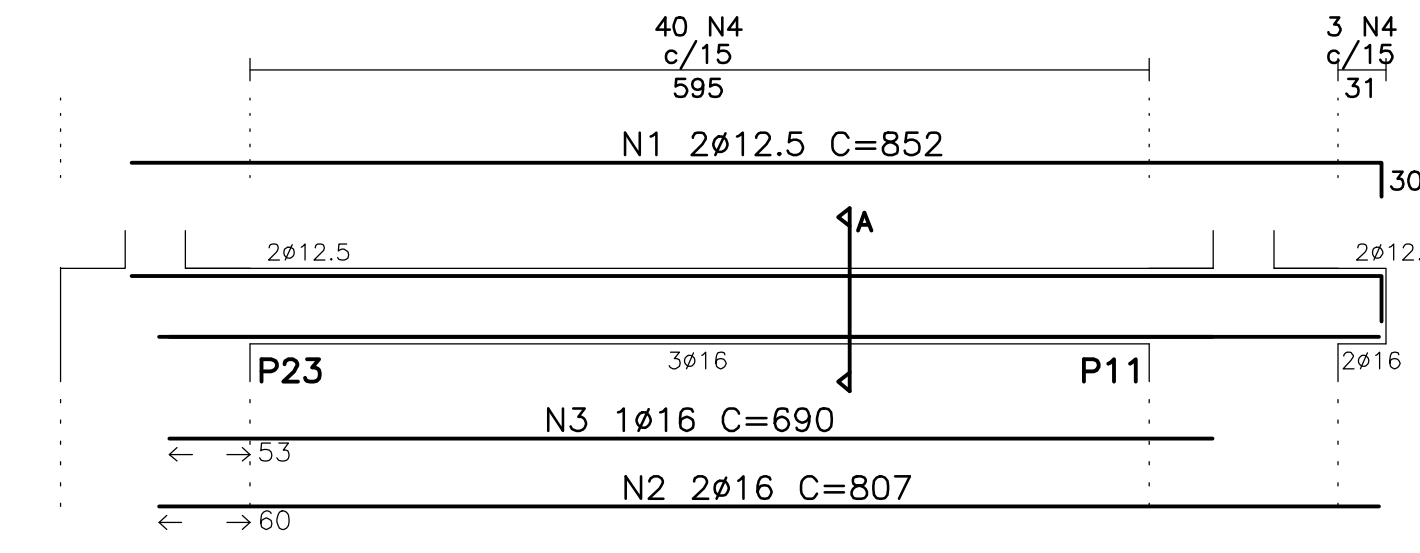
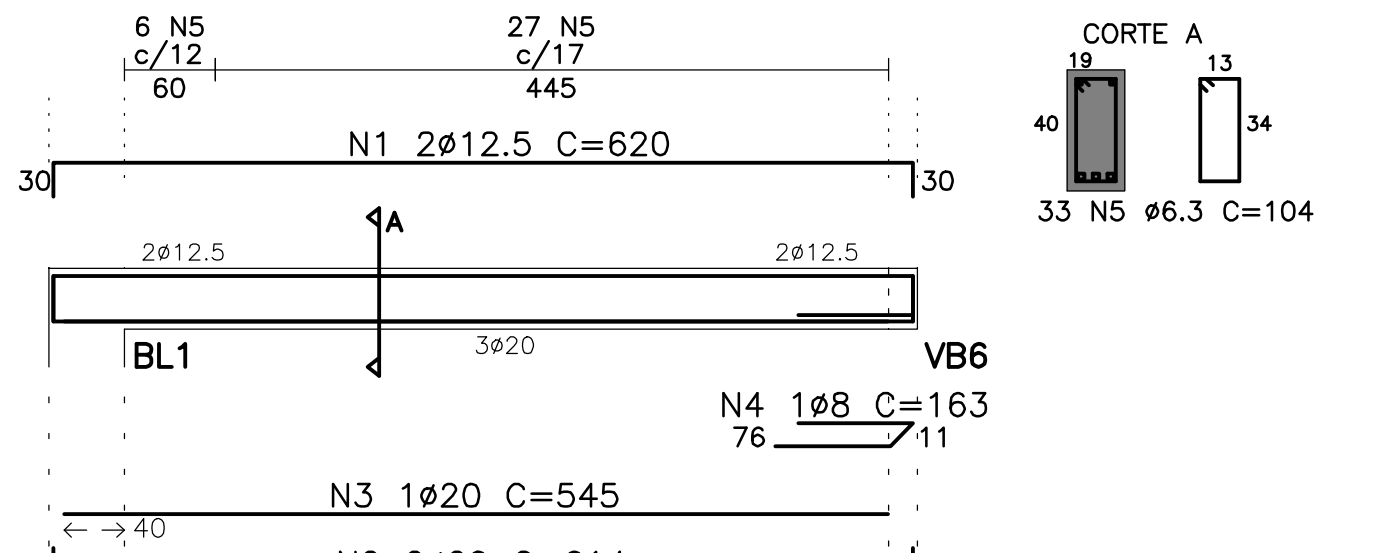


Table with columns: N, Q, UNI, TOTAL. Lists reinforcement quantities for beams VB39, VB40, VB41, VB42, and VB43.

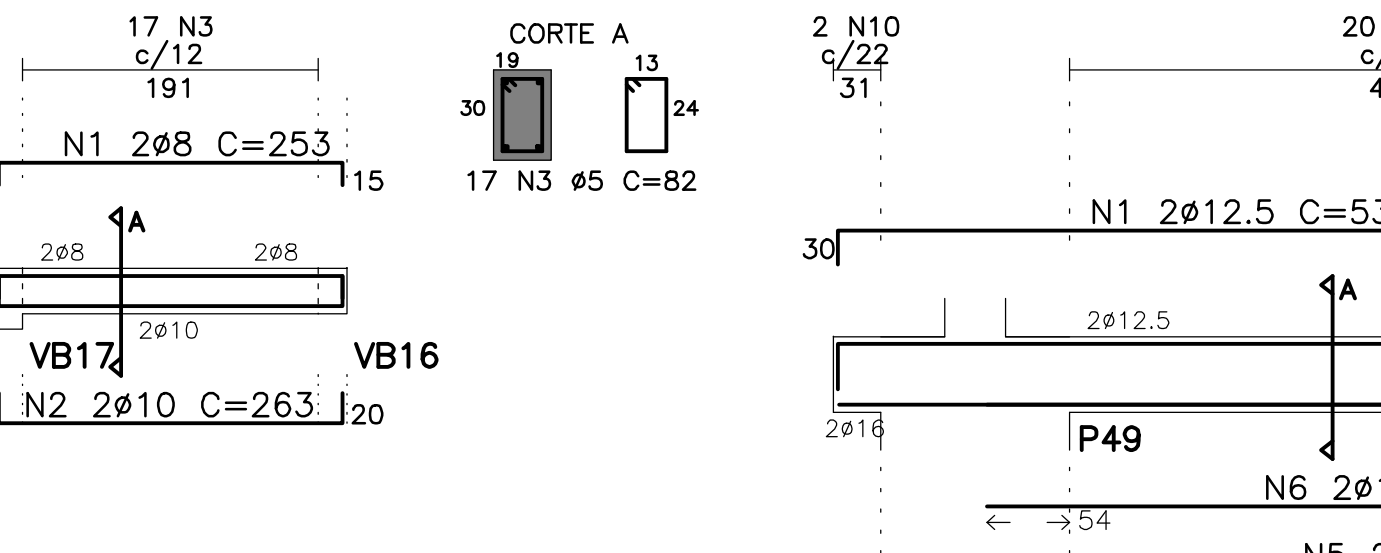
VB44 (19/50)



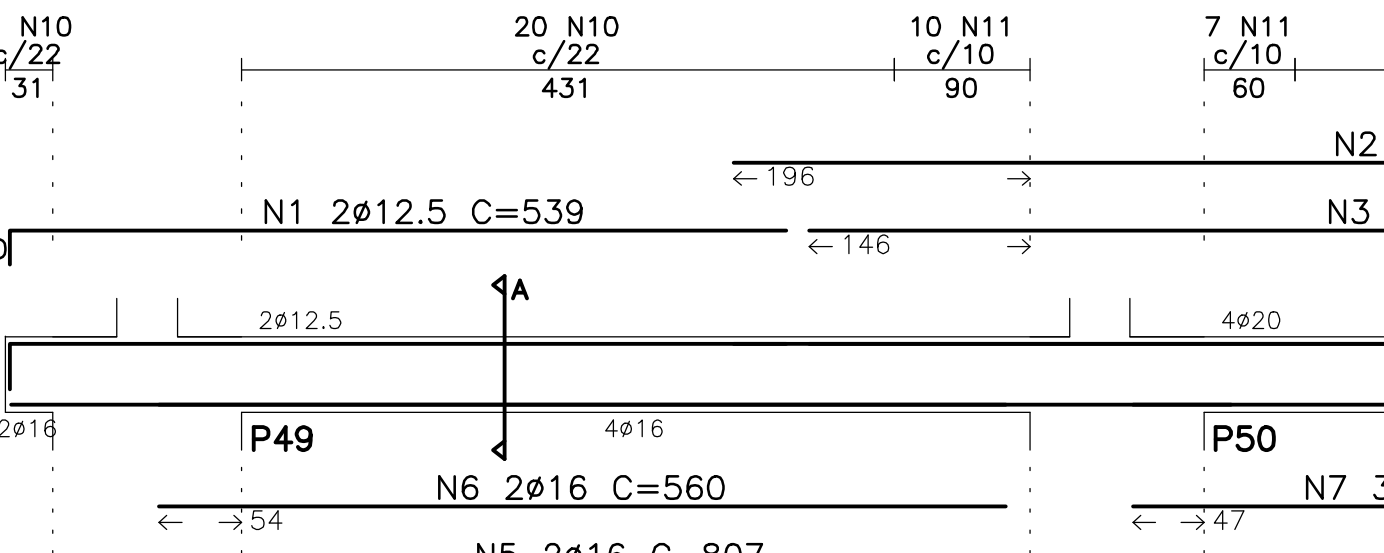
VB45 (19/40)



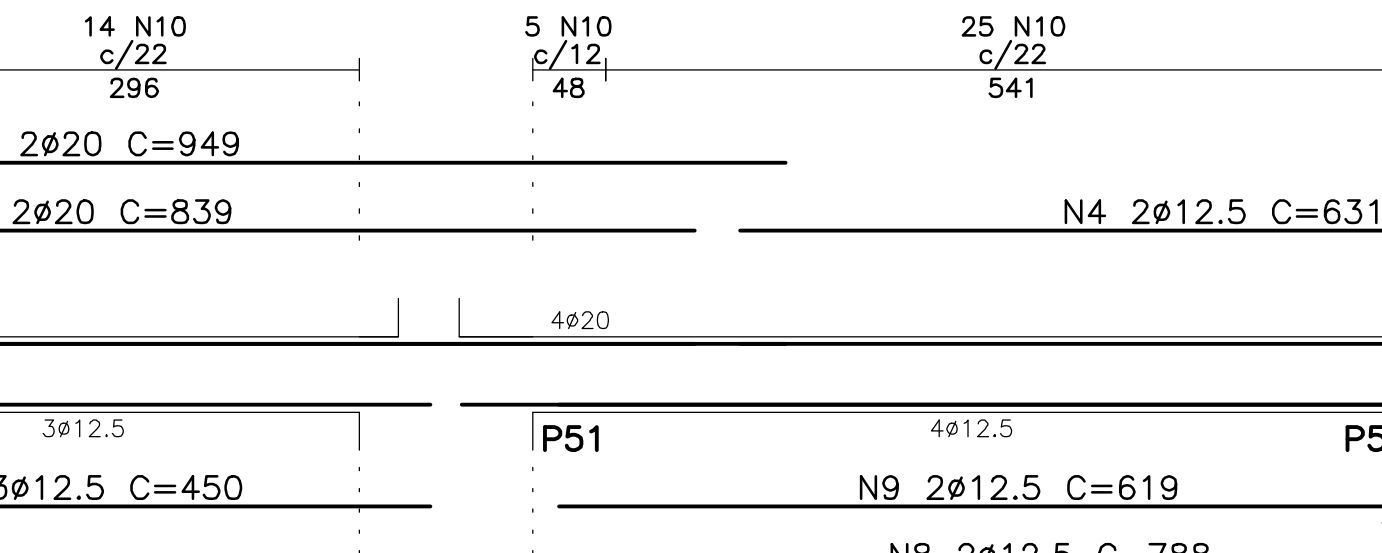
VB46 (19/30)



VB48 (19/50)



VB49 (19/50)



VB50 (19/50)

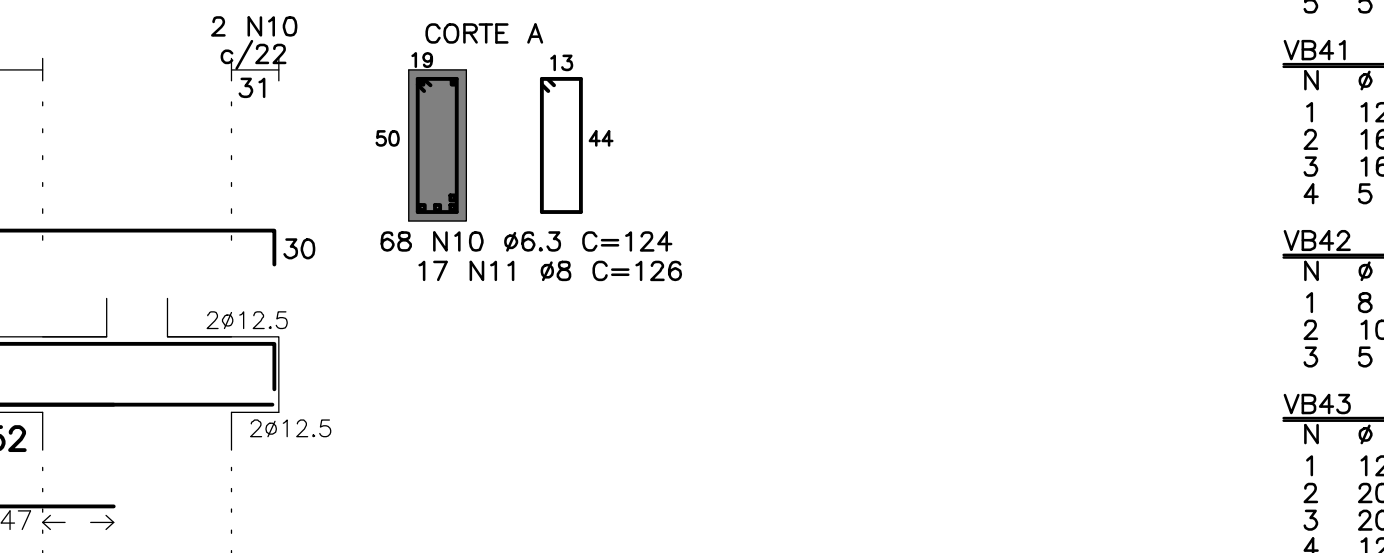


Table with columns: N, Q, UNI, TOTAL. Lists reinforcement quantities for beams VB44, VB45, VB46, VB48, VB49, and VB50.

VB51 (19/50)



VB52 (19/50)



VB53 (19/50)



VB54 (19/50)



VB55 (19/50)

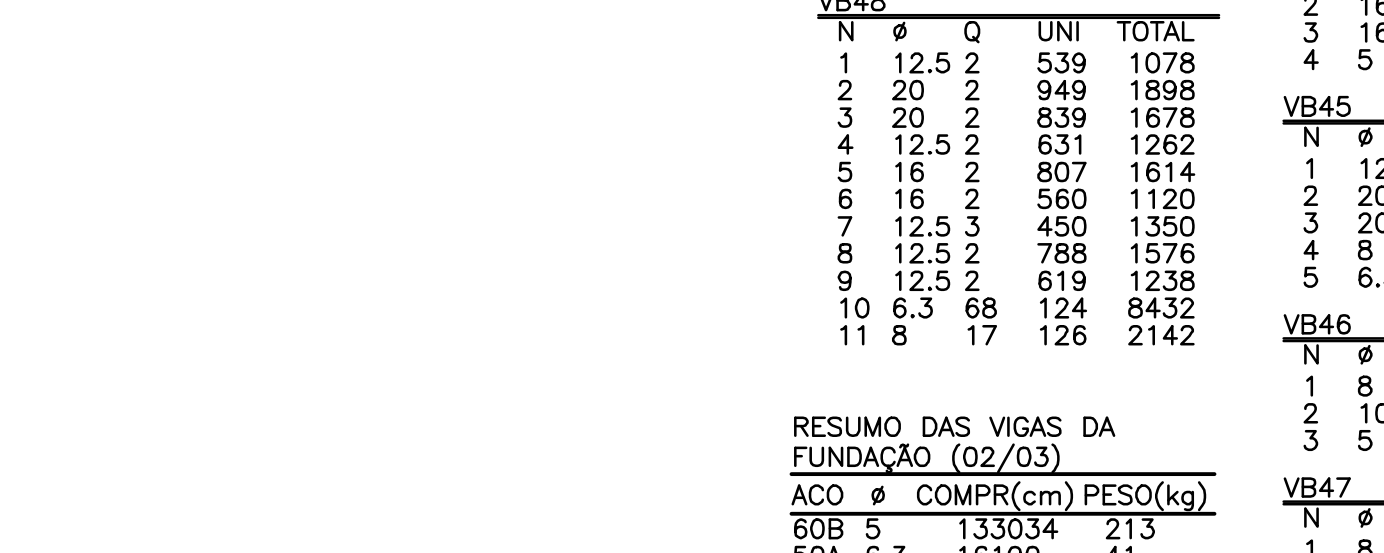
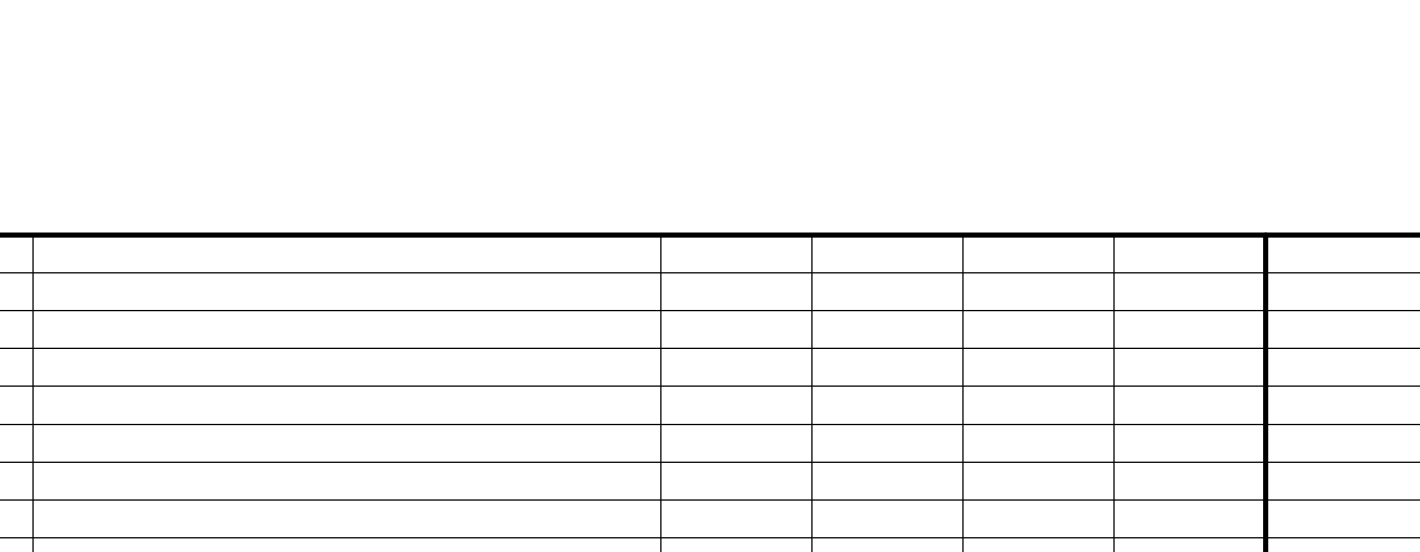
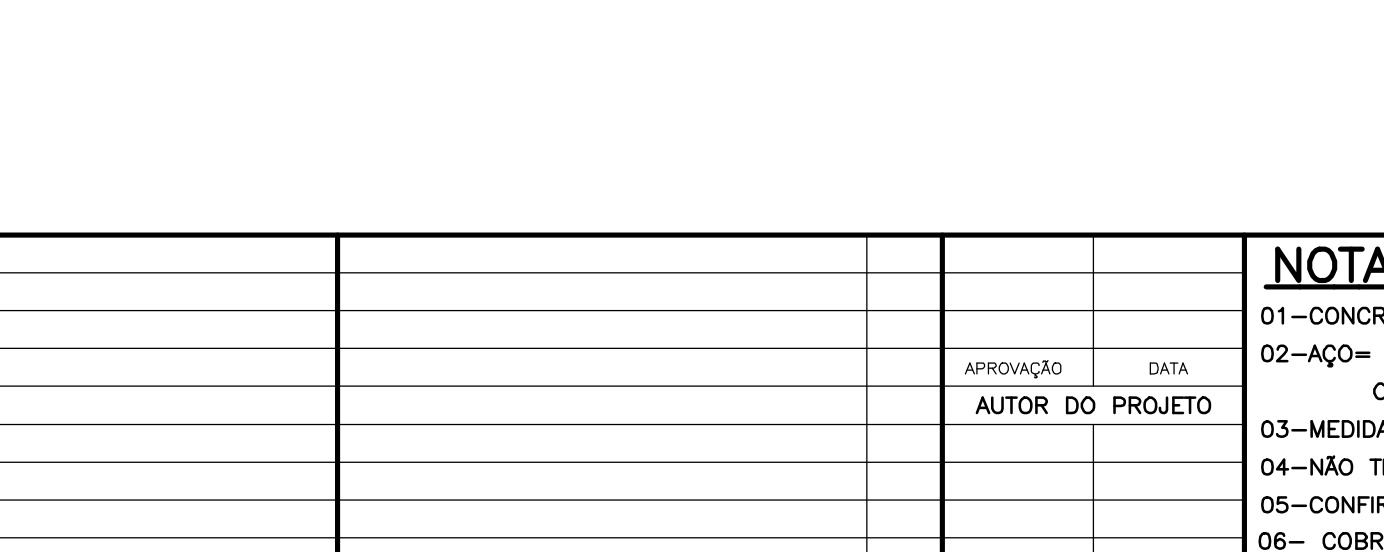


Table with columns: N, Q, UNI, TOTAL. Lists reinforcement quantities for beams VB51, VB52, VB53, VB54, and VB55.

VB56 (19/50)



VB57 (19/50)



VB58 (19/50)



VB59 (19/50)



VB60 (19/50)

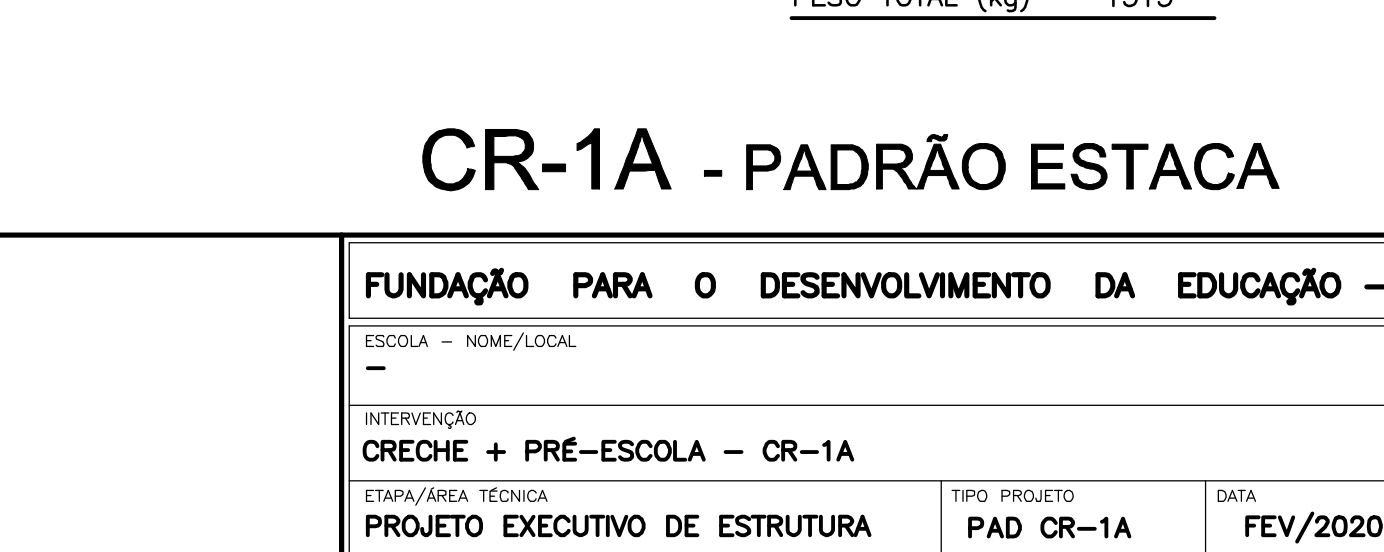
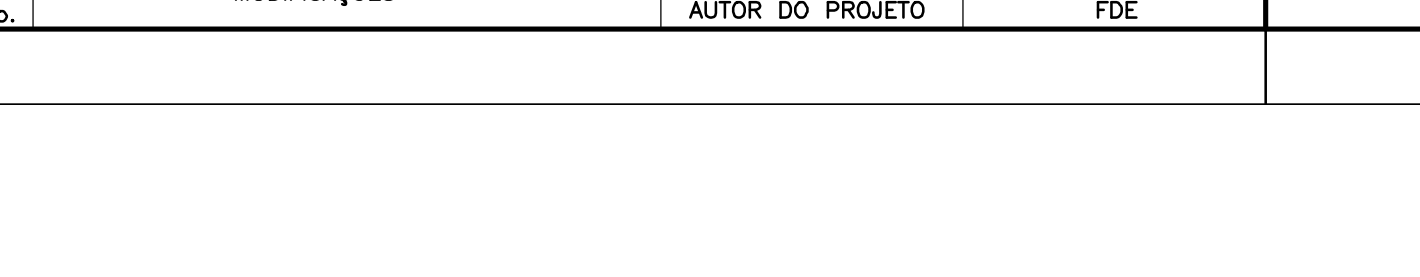
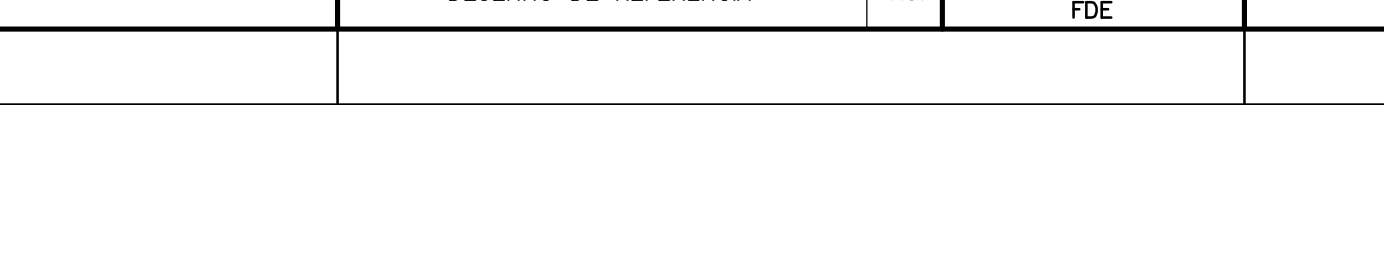


Table with columns: N, Q, UNI, TOTAL. Lists reinforcement quantities for beams VB56, VB57, VB58, VB59, and VB60.

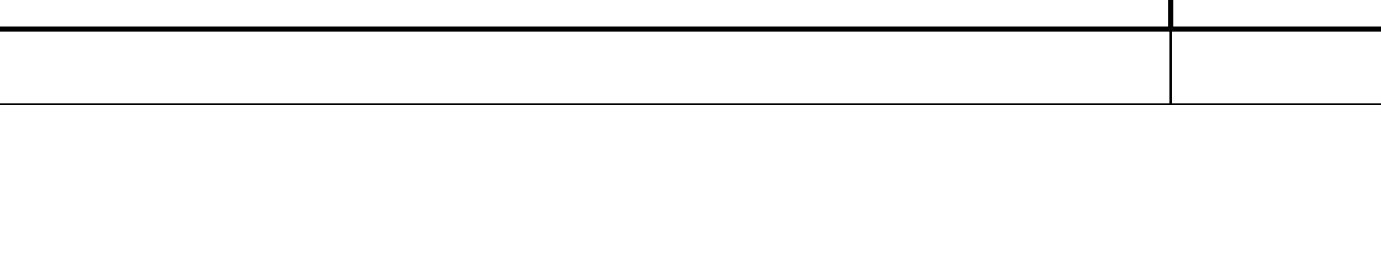
VB61 (19/50)



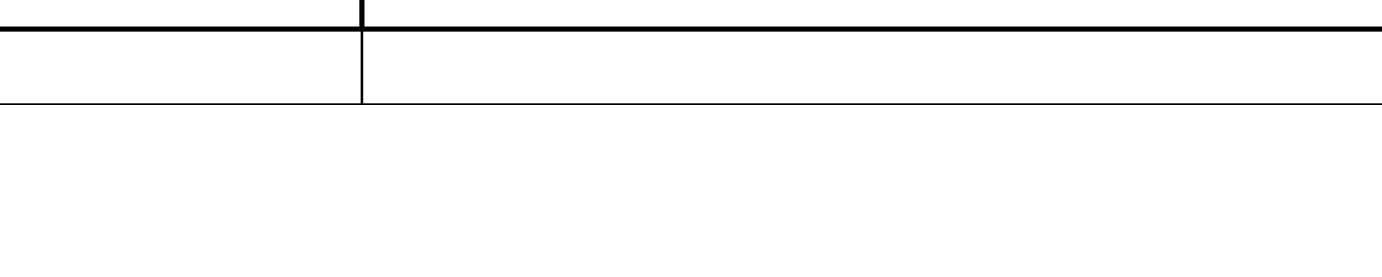
VB62 (19/50)



VB63 (19/50)



VB64 (19/50)



VB65 (19/50)

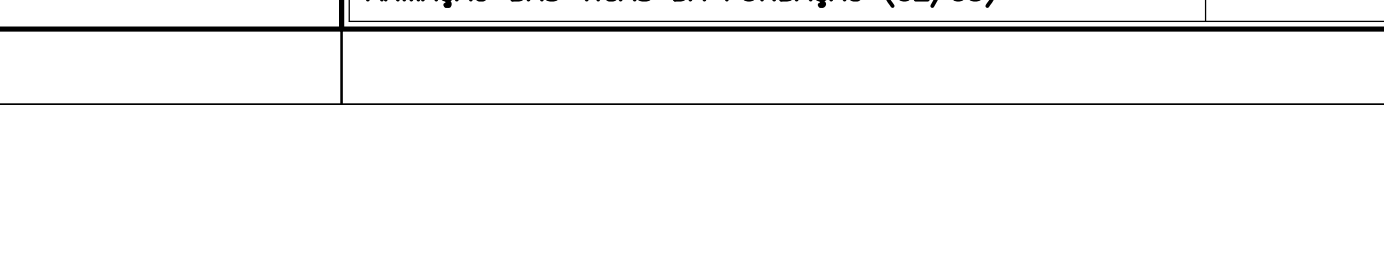


Table with columns: N, Q, UNI, TOTAL. Lists reinforcement quantities for beams VB61, VB62, VB63, VB64, and VB65.

VB66 (19/50)



VB67 (19/50)



VB68 (19/50)



VB69 (19/50)



VB70 (19/50)

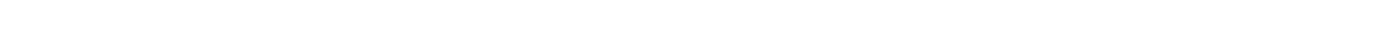


Table with columns: N, Q, UNI, TOTAL. Lists reinforcement quantities for beams VB66, VB67, VB68, VB69, and VB70.

Table with columns: N, Q, UNI, TOTAL. Lists reinforcement quantities for beams VB17 through VB70.

NOTAS: 01-CONCRETO= fck >= 25 MPa 02-ACO= CA-50 - fyk=500 MPa 03-MEDIDAS EM CM, NUNCA EM M. 04-NAO TIRAR MEDIDAS EM ESCALA. 05-CONFIRMAR MEDIDAS NO LOCAL. 06- COBRIMENTO=7,5cm

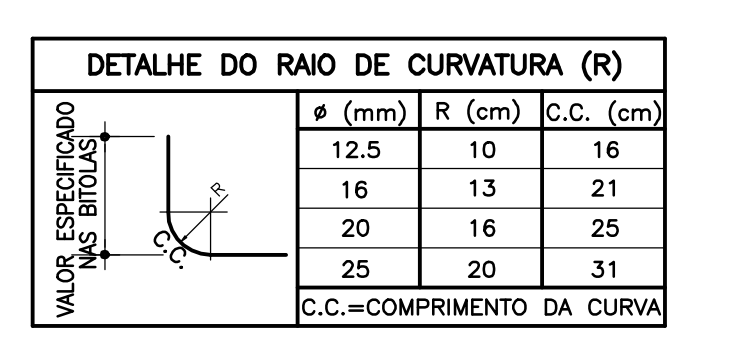


Table with columns: PROJETO, DATA, and other project details. Includes project name 'CR-1A - PADRÃO ESTACA' and date 'FEV/2020'.

CR-1A - PADRÃO ESTACA 205