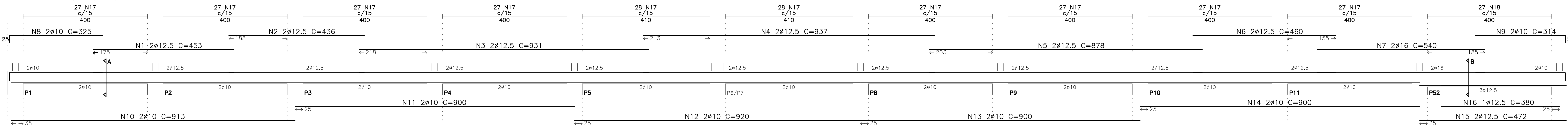
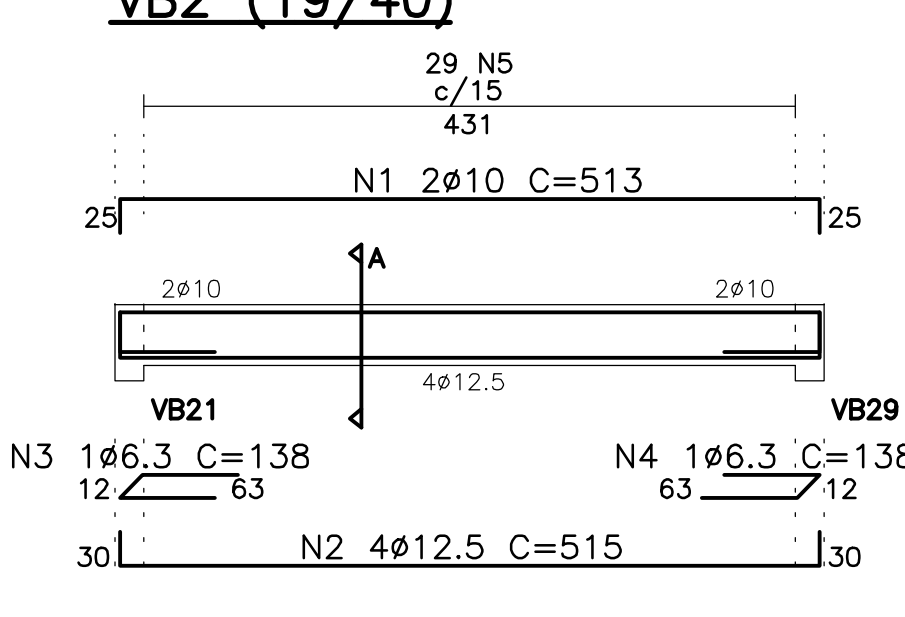


VB1 (19/40/19/50)

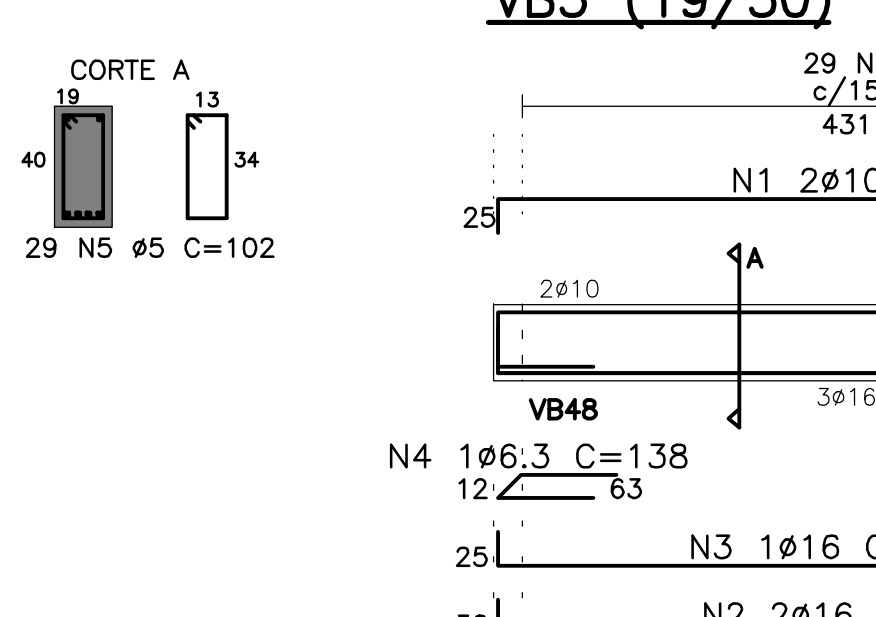


N	Q	UNI	TOTAL
1	12.5	2	451
2	12.5	2	436
3	12.5	2	872
4	12.5	2	937
5	12.5	2	1874
6	12.5	2	1864
7	12.5	2	460
8	12.5	2	920
9	12.5	2	850
10	12.5	2	913
11	12.5	2	1826
12	12.5	2	313
13	12.5	2	920
14	12.5	2	900
15	12.5	2	1800
16	12.5	2	900
17	12.5	2	472
18	12.5	2	944
19	12.5	2	380
20	12.5	2	774
21	12.5	2	102
22	12.5	2	324

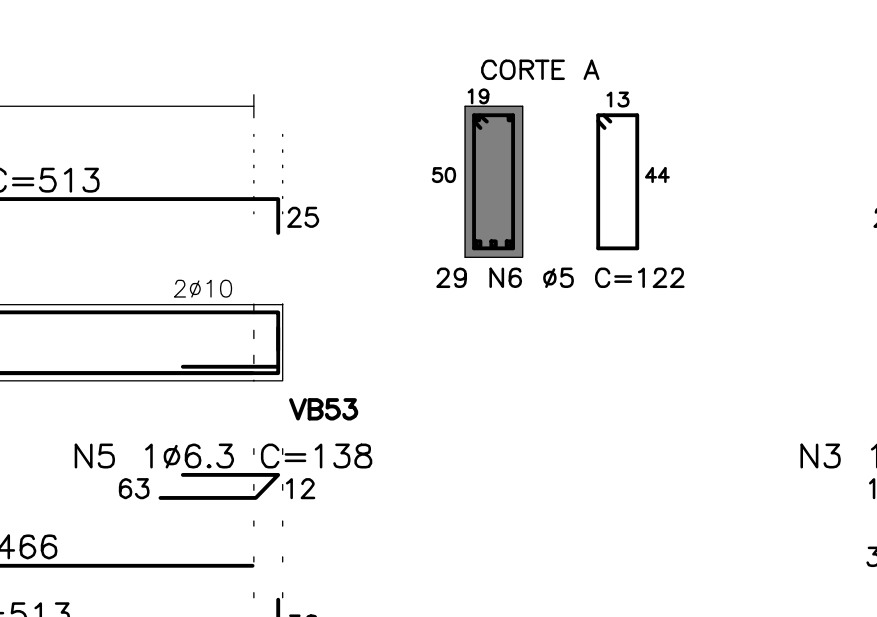
VB2 (19/40)



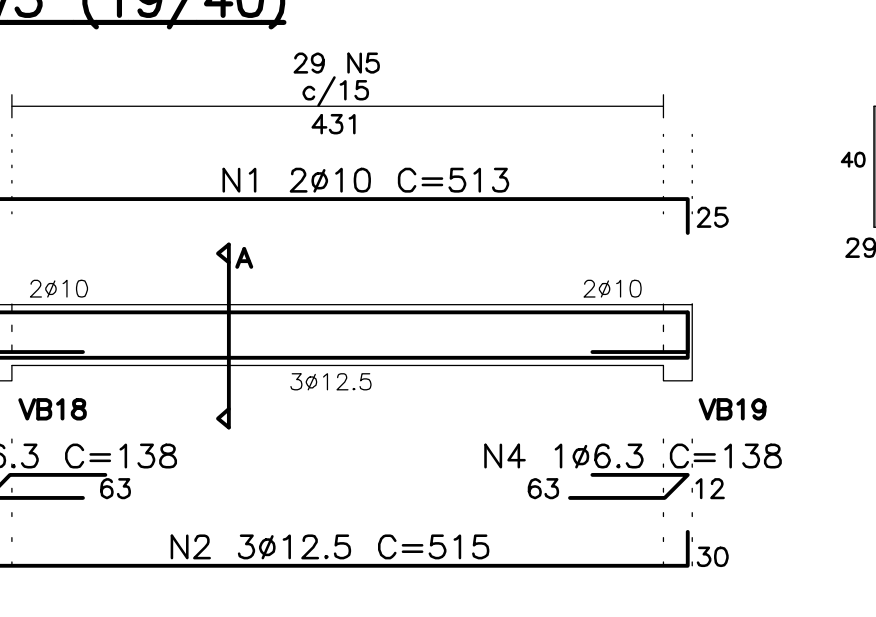
VB3 (19/50)



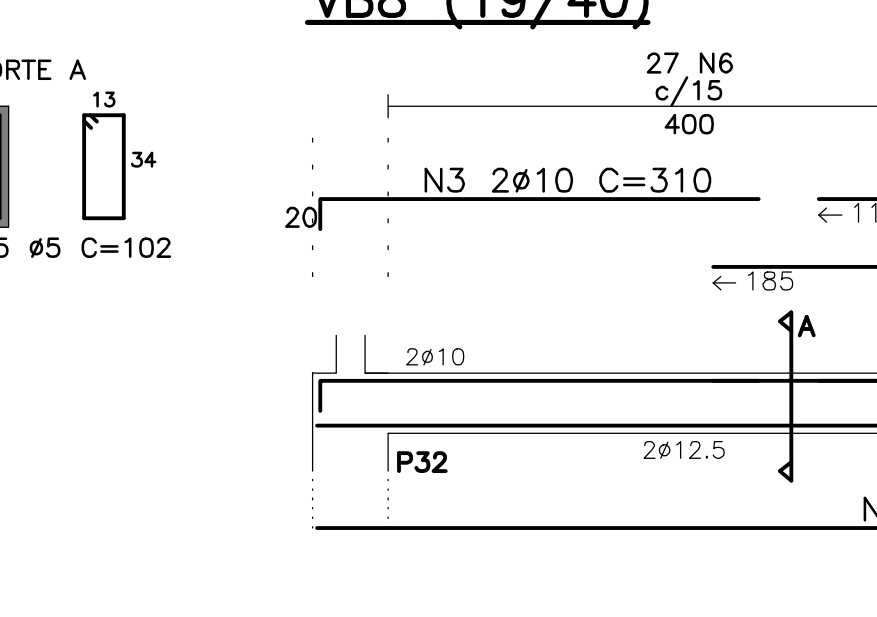
V5 (19/40)



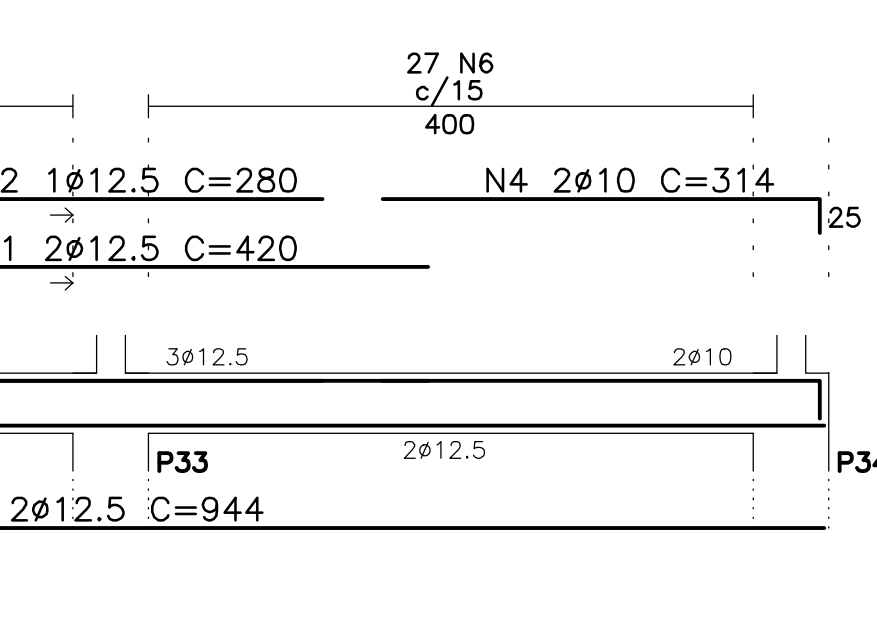
VB8 (19/40)



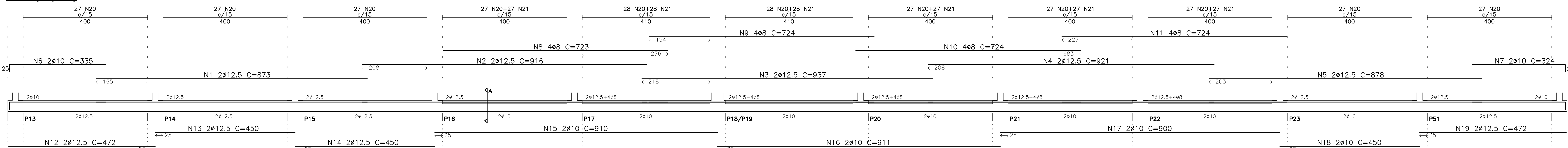
VB9 (19/40)



VB10 (19/30)

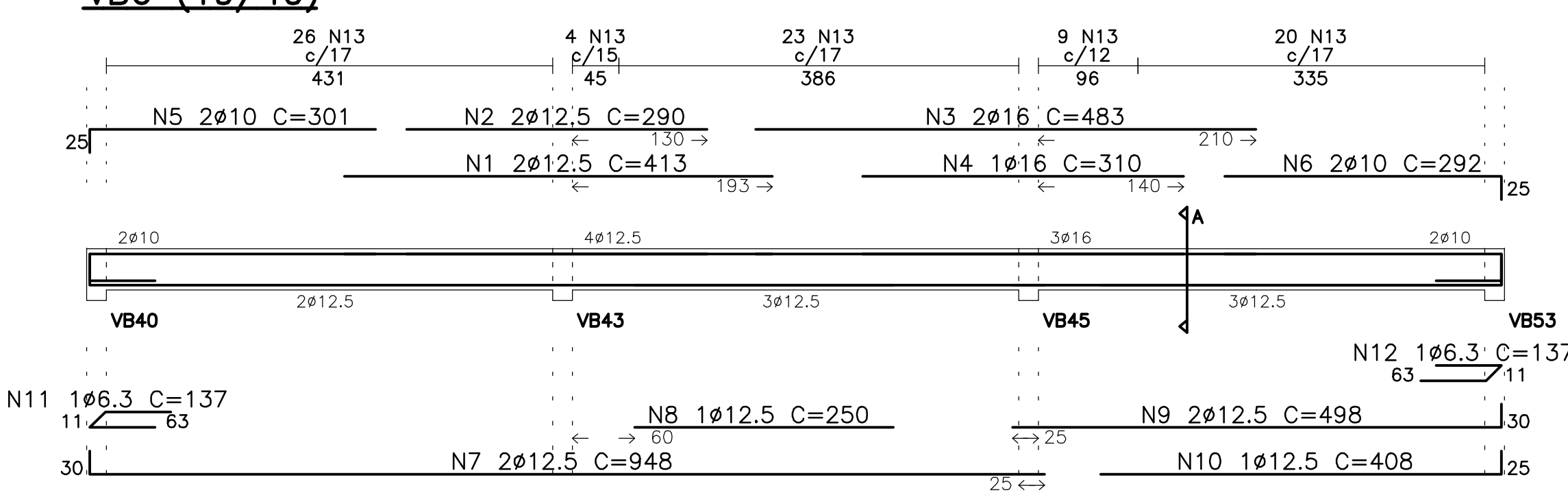


VB4 (19/40)

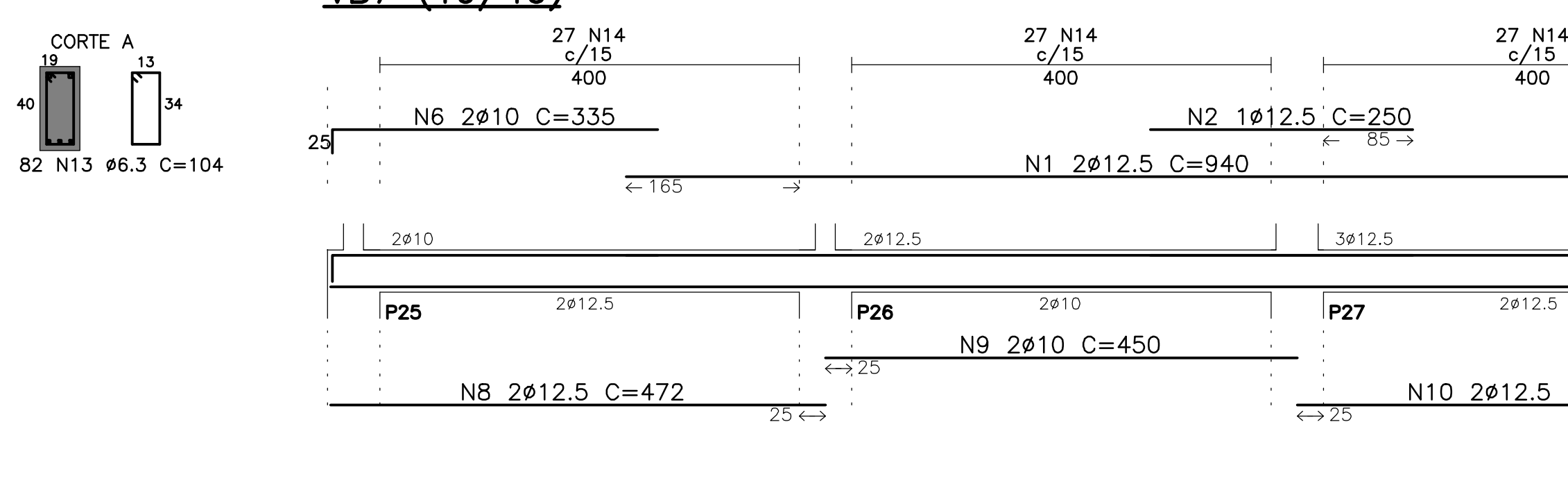


N	Q	UNI	TOTAL
1	12.5	2	413
2	12.5	2	290
3	12.5	2	580
4	12.5	2	483
5	12.5	2	966
6	12.5	2	310
7	12.5	2	620
8	12.5	2	310
9	12.5	2	310
10	12.5	2	310
11	12.5	2	310
12	12.5	2	310
13	12.5	2	310
14	12.5	2	310
15	12.5	2	310
16	12.5	2	310
17	12.5	2	310
18	12.5	2	310
19	12.5	2	310
20	12.5	2	310
21	12.5	2	310
22	12.5	2	310
23	12.5	2	310
24	12.5	2	310
25	12.5	2	310
26	12.5	2	310
27	12.5	2	310
28	12.5	2	310
29	12.5	2	310
30	12.5	2	310

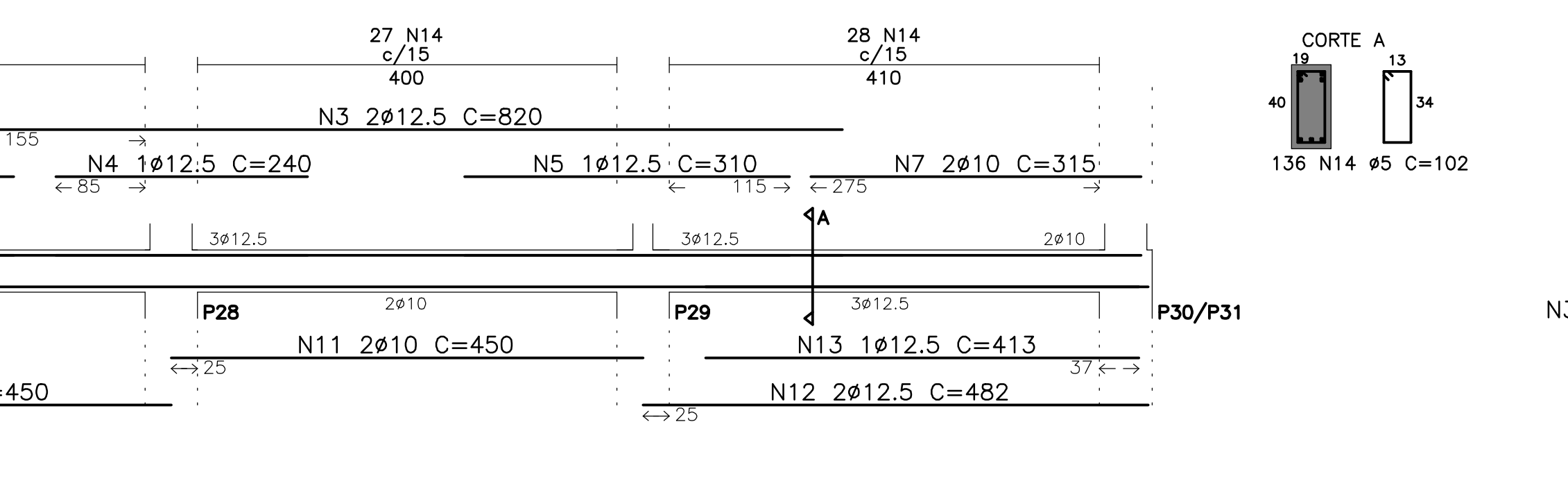
VB6 (19/40)



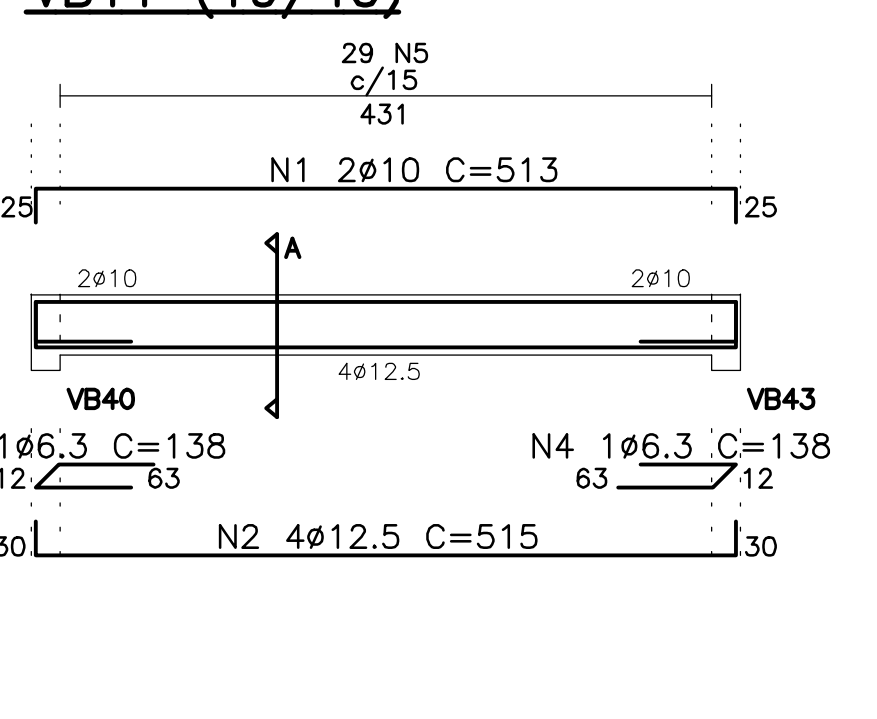
VB7 (19/40)



VB11 (19/40)

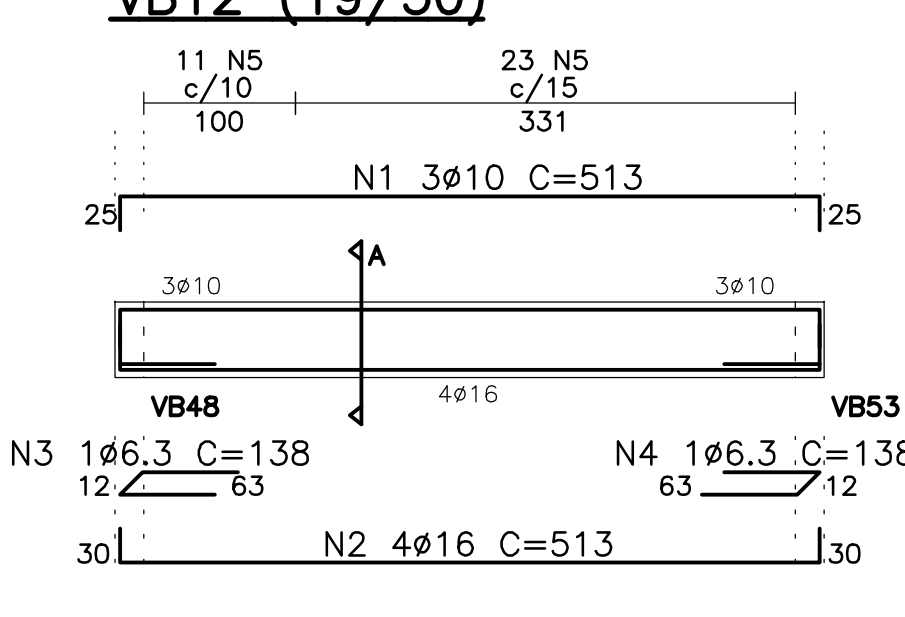


VB12 (19/50)

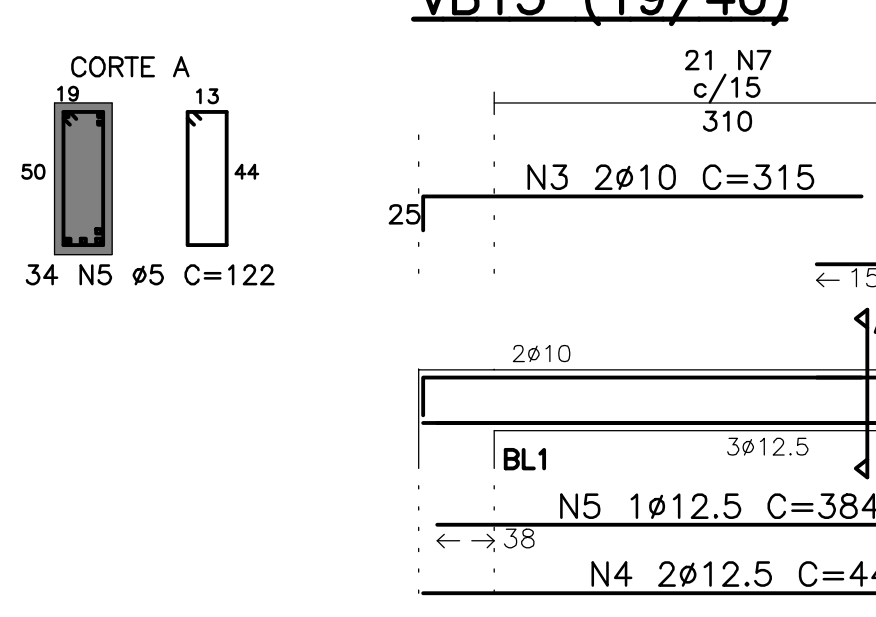


N	Q	UNI	TOTAL
1	12.5	2	413
2	12.5	2	420
3	12.5	2	840
4	12.5	2	420
5	12.5	2	840
6	12.5	2	420
7	12.5	2	840
8	12.5	2	420
9	12.5	2	840
10	12.5	2	420
11	12.5	2	840
12	12.5	2	420
13	12.5	2	840
14	12.5	2	420
15	12.5	2	840
16	12.5	2	420
17	12.5	2	840
18	12.5	2	420
19	12.5	2	840
20	12.5	2	420
21	12.5	2	840
22	12.5	2	420
23	12.5	2	840
24	12.5	2	420
25	12.5	2	840
26	12.5	2	420
27	12.5	2	840
28	12.5	2	420
29	12.5	2	840
30	12.5	2	420

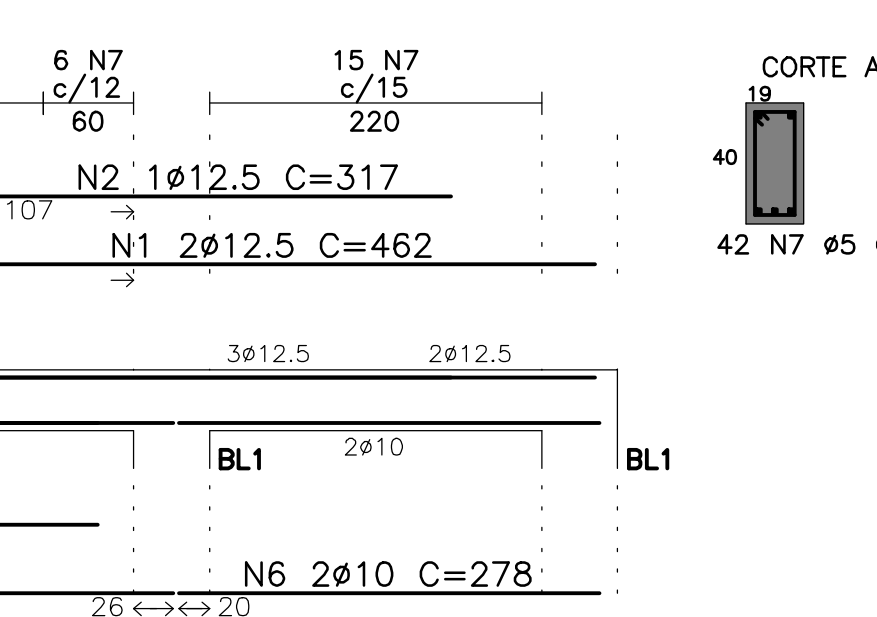
VB12 (19/50)



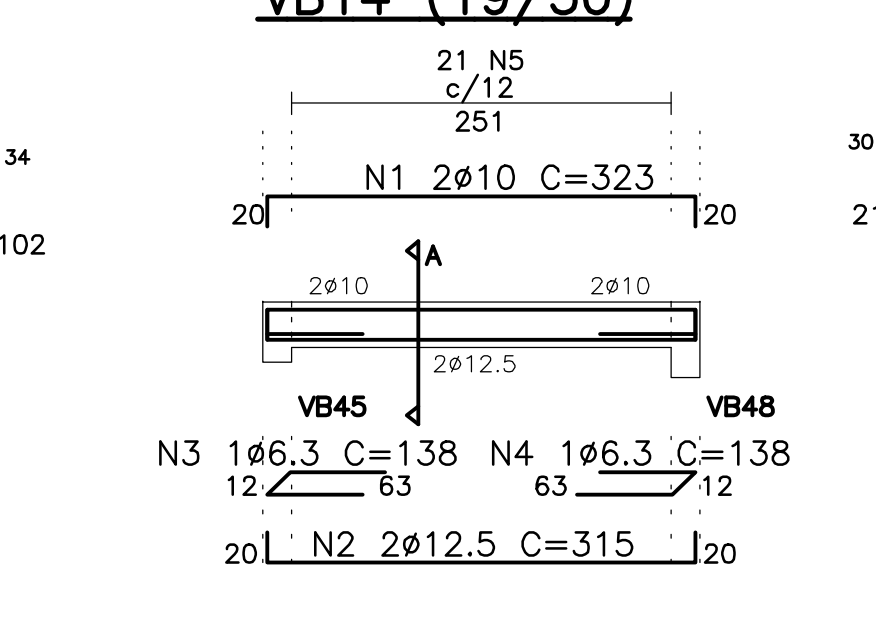
VB13 (19/40)



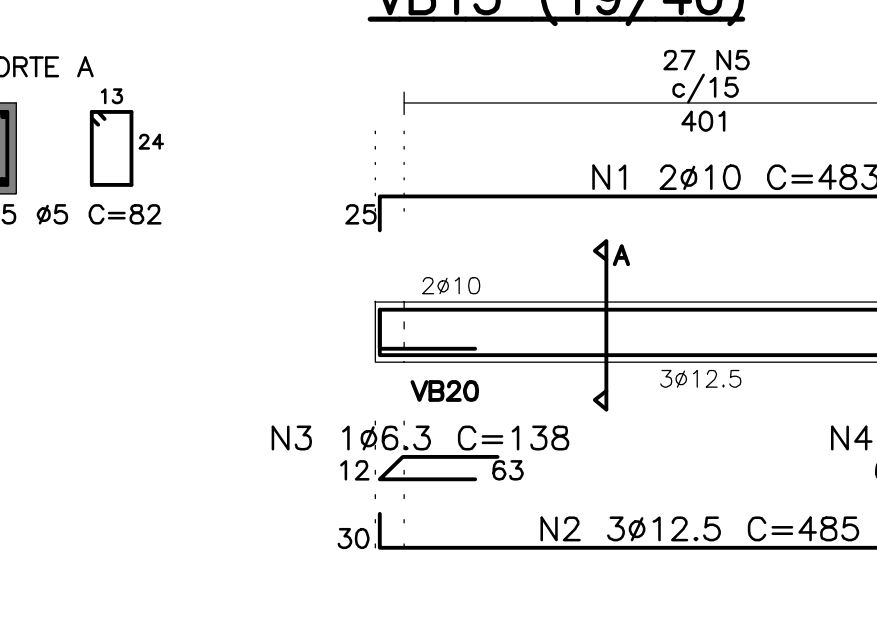
VB14 (19/30)



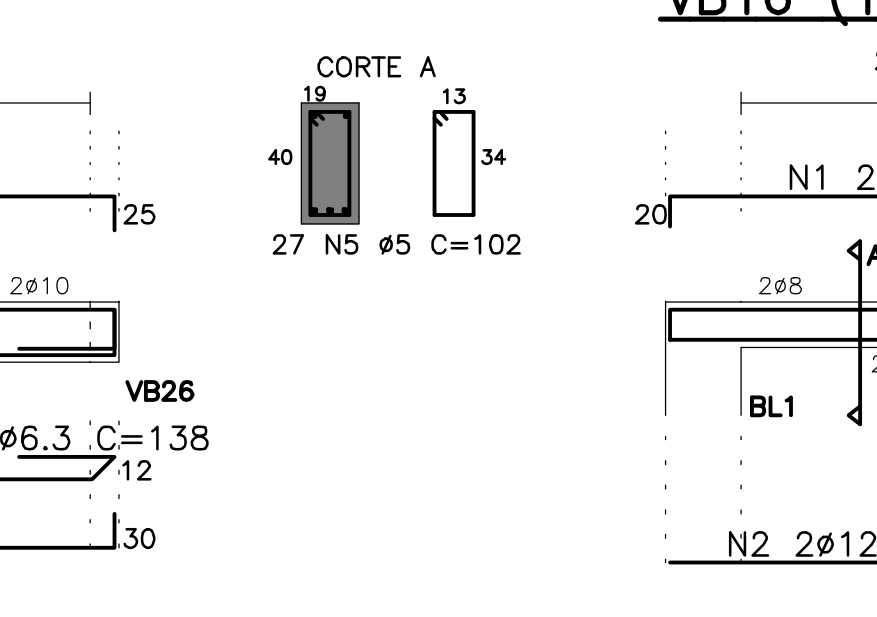
VB15 (19/40)



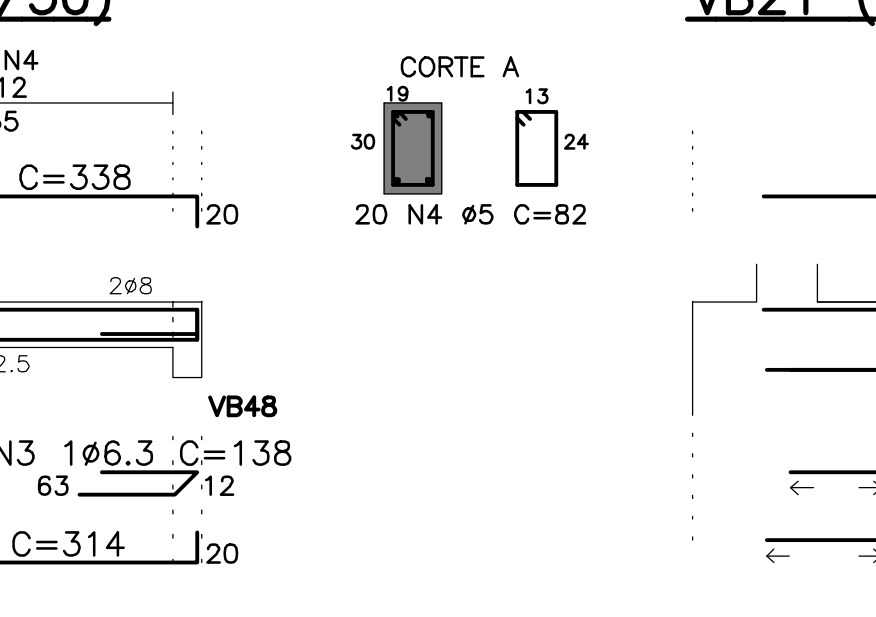
VB16 (19/30)



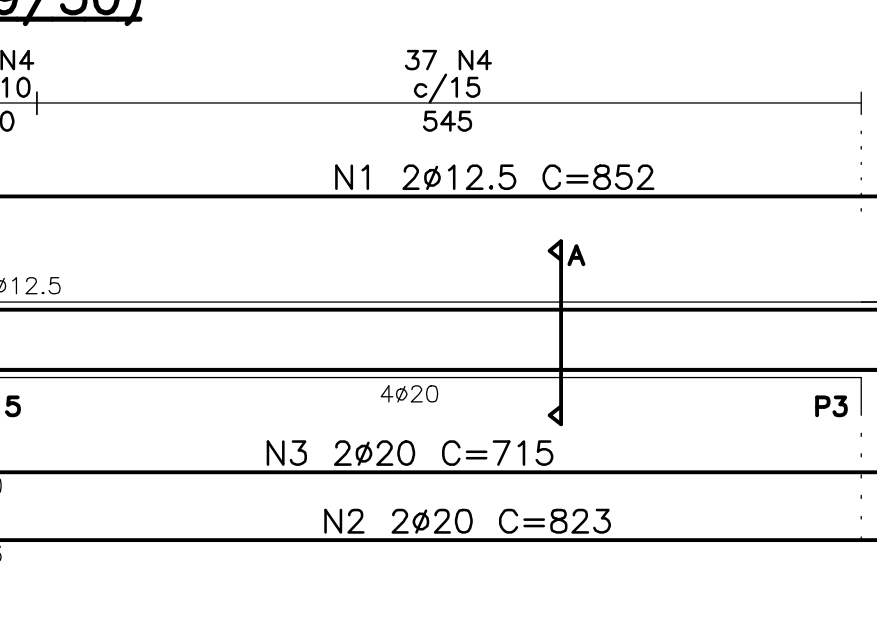
VB21 (19/50)



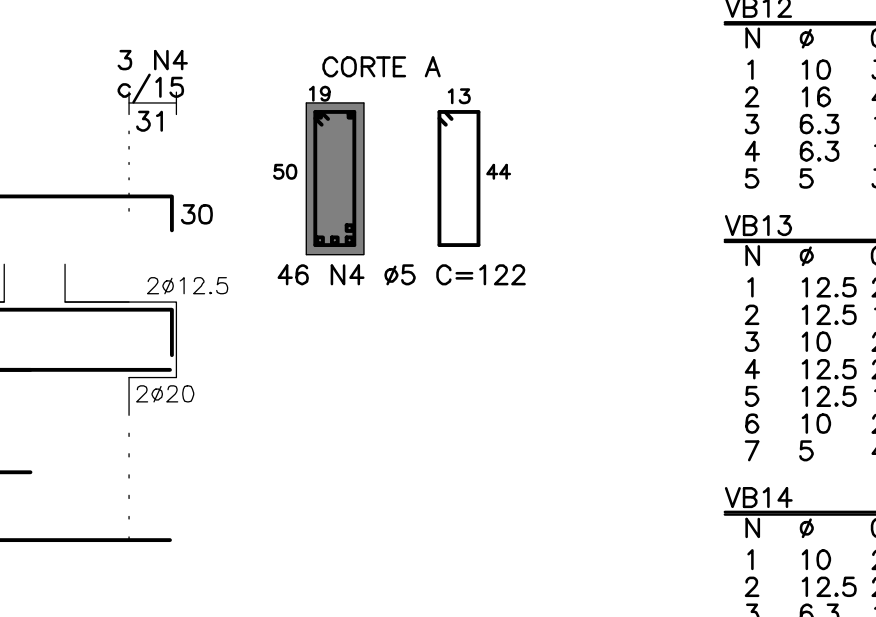
VB18 (19/50)



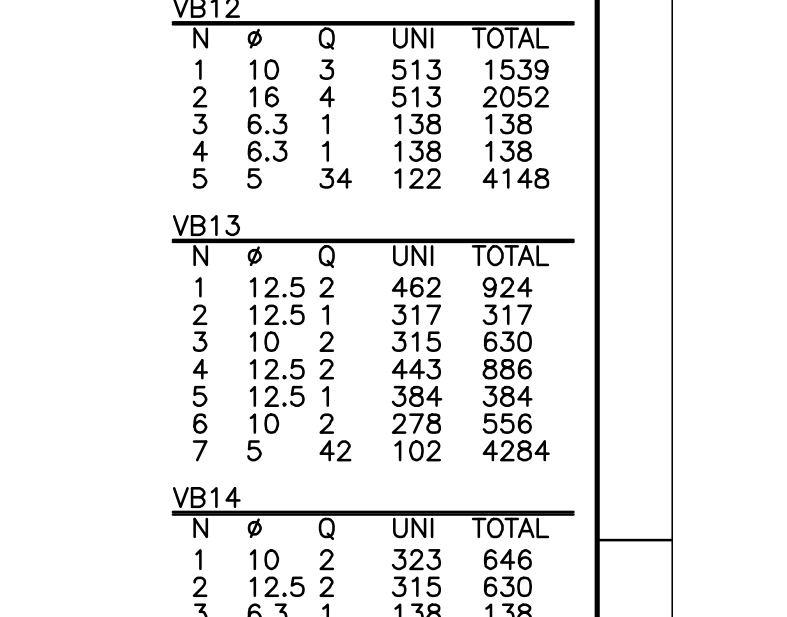
VB20 (19/40)



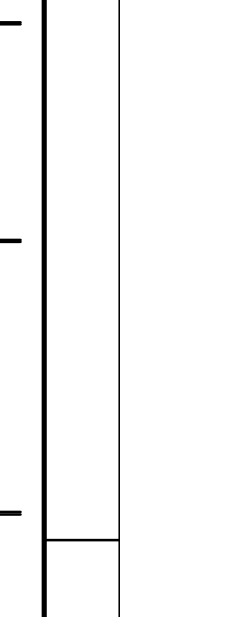
VB22 (19/30)



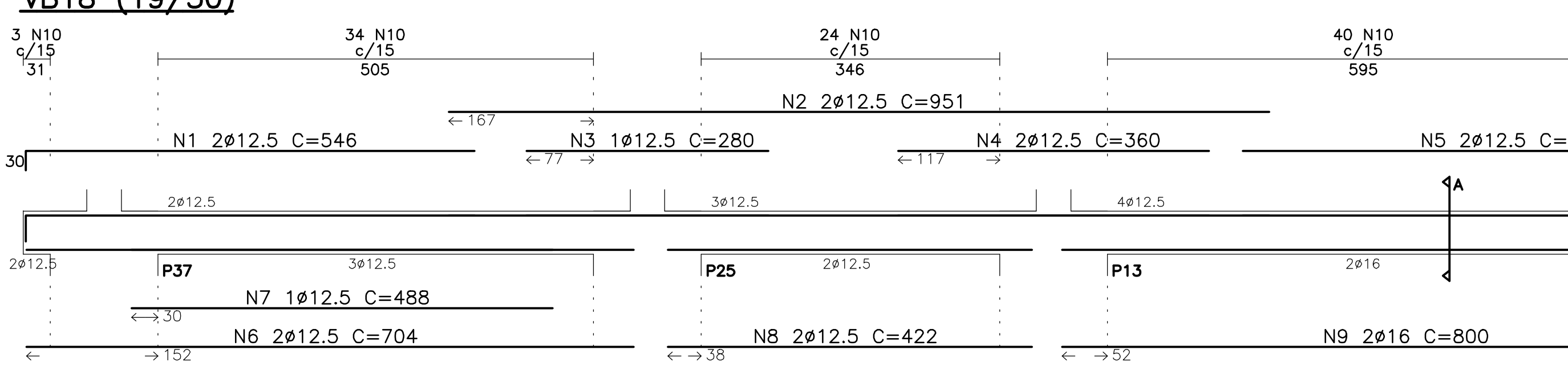
VB23 (19/30)



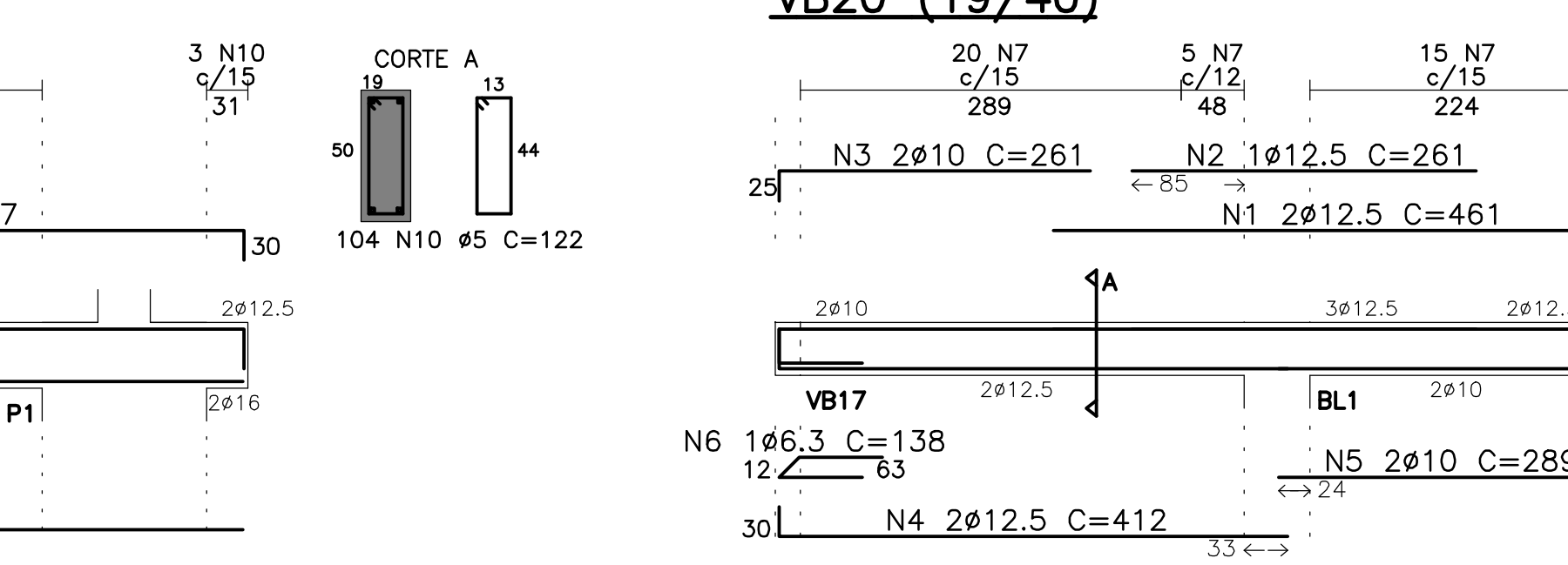
VB24 (19/30)



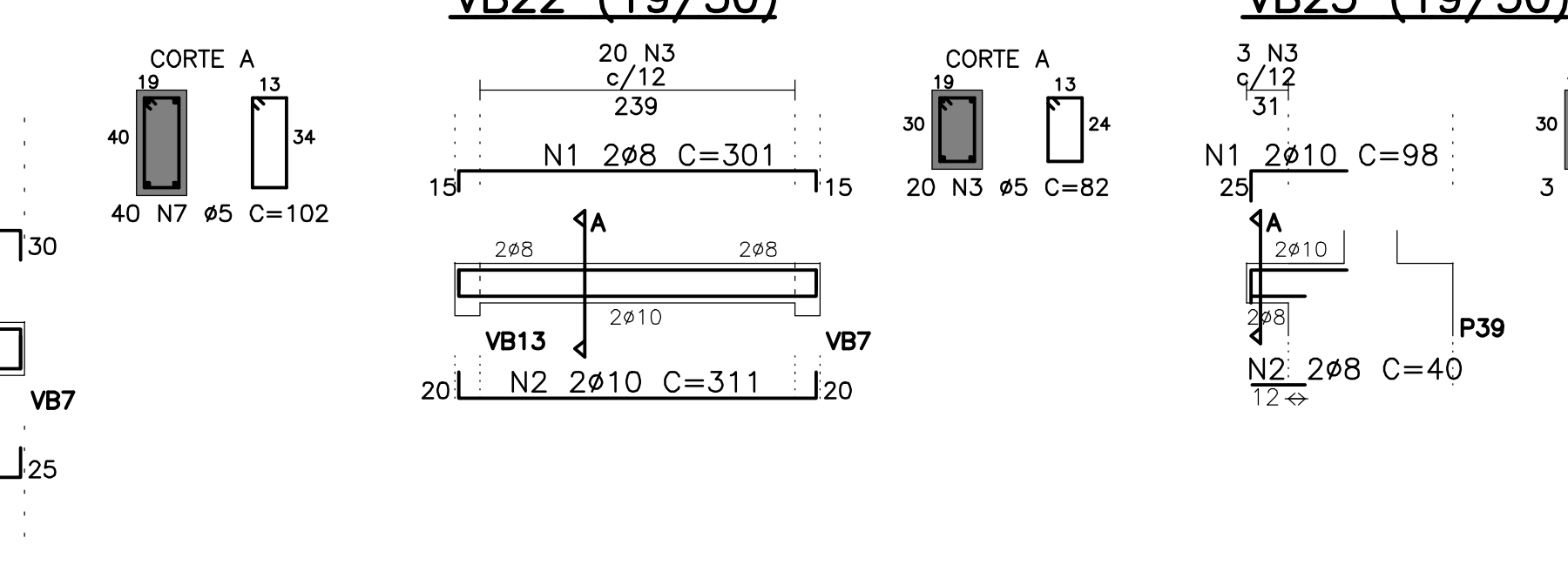
VB18 (19/50)



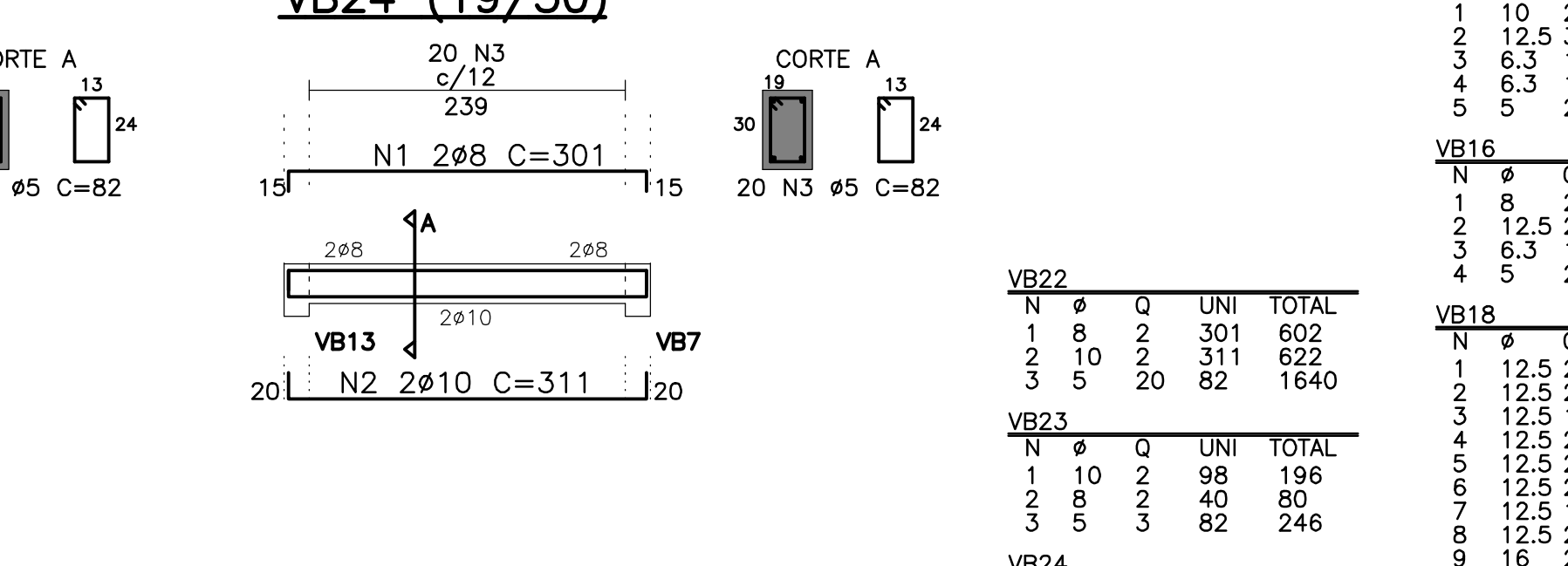
VB20 (19/40)



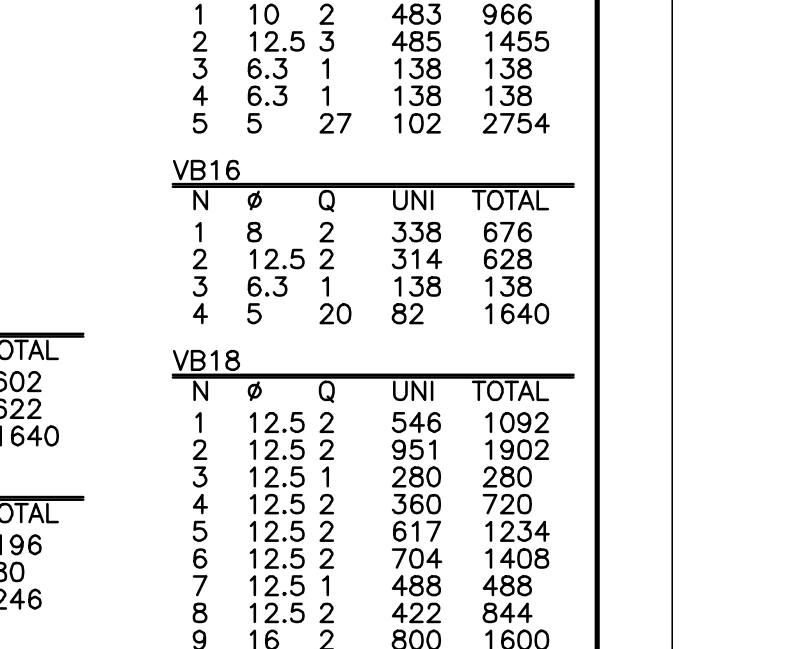
VB22 (19/30)



VB23 (19/30)



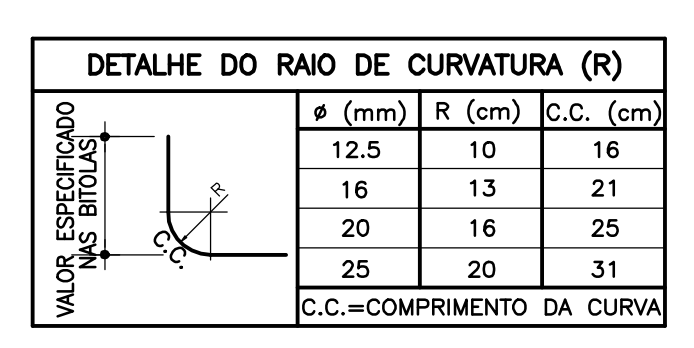
VB24 (19/30)



N	Q	UNI	TOTAL
1	12.5	2	460
2	12.5	2	920
3	12.5	2	1840
4	12.5	2	1840
5	12.5	2	3680
6	12.5	2	3680
7	12.5	2	7360
8	12.5	2	7360
9	12.5	2	14720
10	12.5	2	14720
11	12.5	2	29440
12	12.5	2	29440
13	12.5	2	58880
14	12.5	2	58880
15	12.5	2	117760
16	12.5	2	117760
17	12.5	2	235520
18	12.5	2	235520
19	12.5	2	471040
20	12.5	2	471040
21	12.5	2	942080
22	12.5	2	942080
23	12.5	2	1884160
24	12.5	2	1884160
25	12.5	2	3768320
26	12.5	2	3768320
27	12.5	2	7536640
28	12.5	2	7536640
29	12.5	2	15073280
30	12.5	2	15073280

NOTAS

- 01-CONCRETO= fck ≥ 25 MPa
- 02-AÇO= CA-50 = fyk=500 MPa
- 03-MEDIDAS EM cm, NÚMEROS EM m.
- 04-NÃO TIRAR MEDIDAS EM ESCALA.
- 05-CONFIRMAR MEDIDAS NO LOCAL.
- 06- COBRIMENTO=3,0cm



FUNDAÇÃO PARA O DESENVOLVIMENTO DA EDUCAÇÃO - F D E			
ESCOLA = NOME/LOCAL	1, 2, 0, 1, 0, 8, 9		
INTERVENÇÃO	01		
PROJETO EXECUTIVO DE ESTRUTURA	PADRÃO	DATA/2020	FE - EST
ARMAÇÃO DAS VIGAS DA FUNDAÇÃO (01/03)	INDICADA	05/00	00

MODIFICAÇÕES	APPROVAÇÃO	DATA	APPROVAÇÃO	DATA	OBSERVAÇÕES	DESENHO DE REFERÊNCIA	Nº	APPROVAÇÃO	DATA
	AUTOR DO PROJETO		FDE						